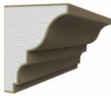
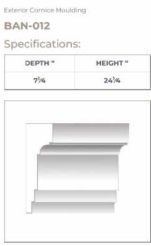


RESTORE
ORNAMENTAL
LEDGE AND
FIRE WALL
EDGE DETAIL



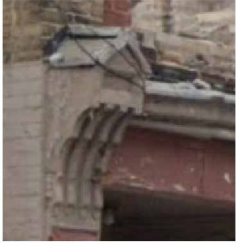
PROFILED
DETAIL (OR
SIMILAR) FOR
CORNICE IS
ILLUSTRATED
ABOVE
(CANAMOULD)



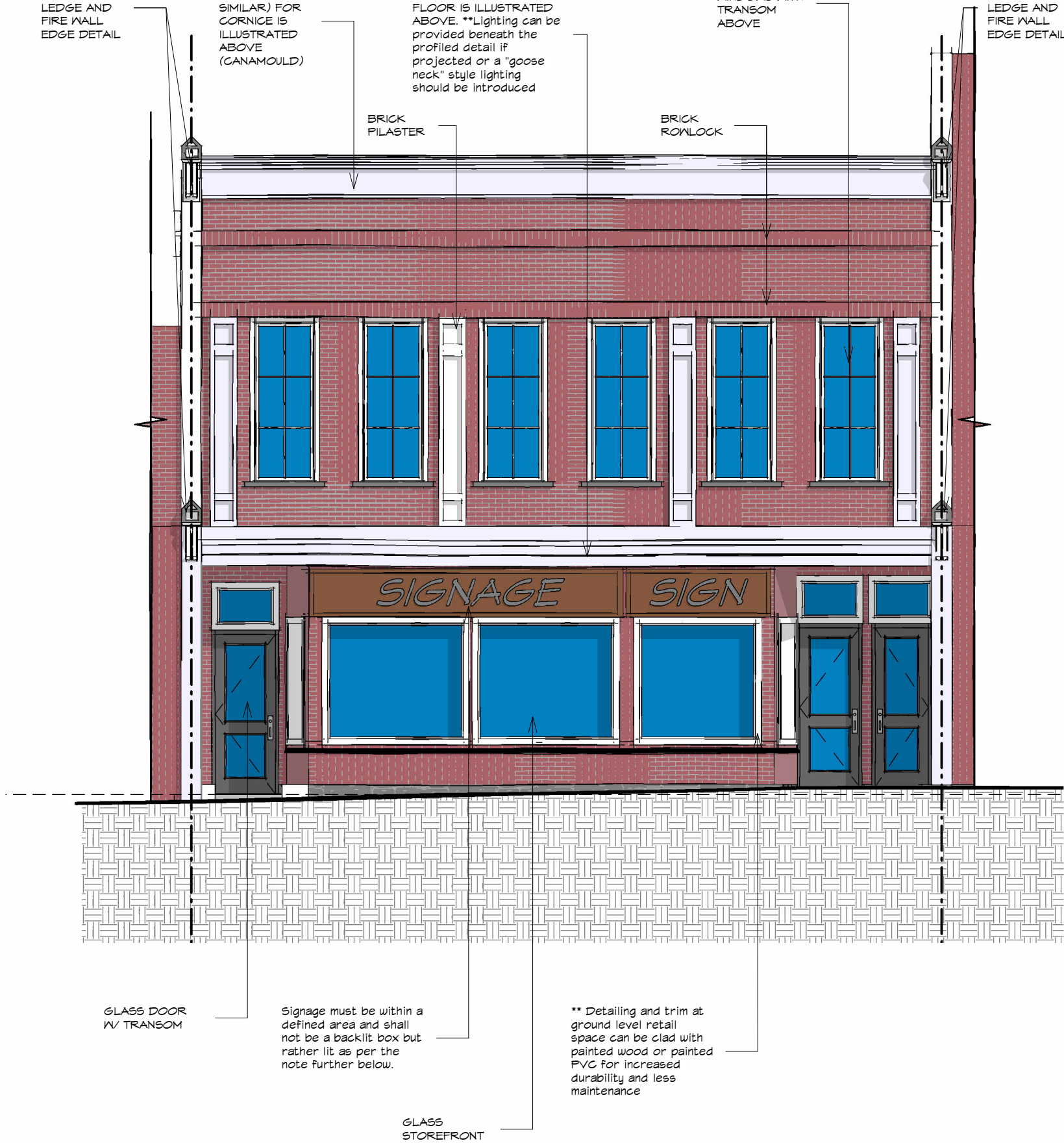
PROFILED DETAIL (OR
SIMILAR) FOR GROUND
FLOOR IS ILLUSTRATED
ABOVE. **Lighting can be
provided beneath the
profiled detail if
projected or a "goose
neck" style lighting
should be introduced



SINGLE HUNG
WINDOWS WITH
TRANSOM
ABOVE



RESTORE
ORNAMENTAL
LEDGE AND
FIRE WALL
EDGE DETAIL



1 FRONT ELEVATION (PROPOSED)
1 : 75

| ID | Location | Size (W x H) | Type / Material | Glazing | Manufacturer (Ref.) |
|----|----------------------|--|--------------------------------------|--------------|--------------------------------|
| W1 | 2nd Floor Windows | 3'-0" x 8'-0" | Double-hung, alum-clad or vinyl | Low-E IGU | Marvin Ultimate / Andersen 400 |
| W2 | Ground Display | 6'-0" x 8'-0" | Aluminum Storefront Frame | Tempered IGU | Kawneer 451T / Alumicor 4400 |
| D1 | Left Entry (Single) | Door Leaf: 3'-0" x 8'-0" Transom: 3'-0" x 2'-0" | Storefront Alum Door + Fixed Transom | Tempered IGU | Kawneer 350 / Trulite 4500 |
| D2 | Right Entry – Door A | Door Leaf: 3'-0" x 8'-0" Transom: 3'-0" x 2'-0" | Storefront Alum Door + Fixed Transom | Tempered IGU | Kawneer 350 / CRL-US Series |
| D3 | Right Entry – Door B | Door Leaf: 3'-0" x 8'-0" Transom: 3'-0" x 2'-0" | Storefront Alum Door + Fixed Transom | Tempered IGU | Kawneer 350 / CRL-US Series |

1. Brick Veneer

 - **Material:** Modular clay brick veneer, smooth face
 - **Colour:** Heritage Red with subtle variation
 - **Manufacturer Reference:** *Shouldice Designer Stone – Architectural Brick Series* ("Heritage Red"), or *EnduraBrick – Red Smooth*
 - **Application:** Primary façade cladding (all upper wall surfaces, around windows)
2. Brick Detailing (Rowlock / Pilasters)

 - **Material:** Solid clay brick rowlock & projecting pilasters
 - **Colour:** Matching "Heritage Red" with soldier course accent
 - **Manufacturer Reference:** *Shouldice – Custom Brick Shapes, Arriscraft – Renaissance Units*
 - **Application:** Horizontal banding above windows, vertical pilasters between windows
3. Stone / Precast Trim

 - **Material:** Precast concrete or cast-stone sill / trim units
 - **Colour:** Smooth limestone buff (off-white)
 - **Manufacturer Reference:** *Arriscraft – Renaissance® Stone (Limestone Buff)* or *Permacon – Precast Sills*
 - **Application:** Window sills, lintels, horizontal band between ground & second floor



| No. | Description | Date | PROJECT TITLE | Date | Drawn By |
|-----|-------------|------|--------------------------------------|-------------------|------------|
| | | | 11-13 Brock St, Uxbridge, ON L9P 1P6 | 2025/04/30 | Designer |
| | | | | Scale | Checked By |
| | | | | 1 : 75 | Checker |
| | | | DRAWING TITLE | Proj. No. | DWG. No. |
| | | | ELEVATION | 250101 | A1.2 |