

Notes:

1. All contractor parking must be off-street.
2. Flagman shall be provided at site access to assist vehicles entering/exiting the site.
3. A 24-hour contact must be available throughout the duration of the project.
4. The characteristic and placement of all signs and traffic control or management shall conform to the standards of the Ontario Traffic Manual (OTM) Book 7 "Temporary Conditions" and as per the Occupational Health and Safety Act.
5. The manufacture and the erection of all signs for the Traffic Management Plan shall be the responsibility of the Contractor.
6. The extends of the construction will be limited within the property boundary and all construction related parking and material storage will be located entirely on site.

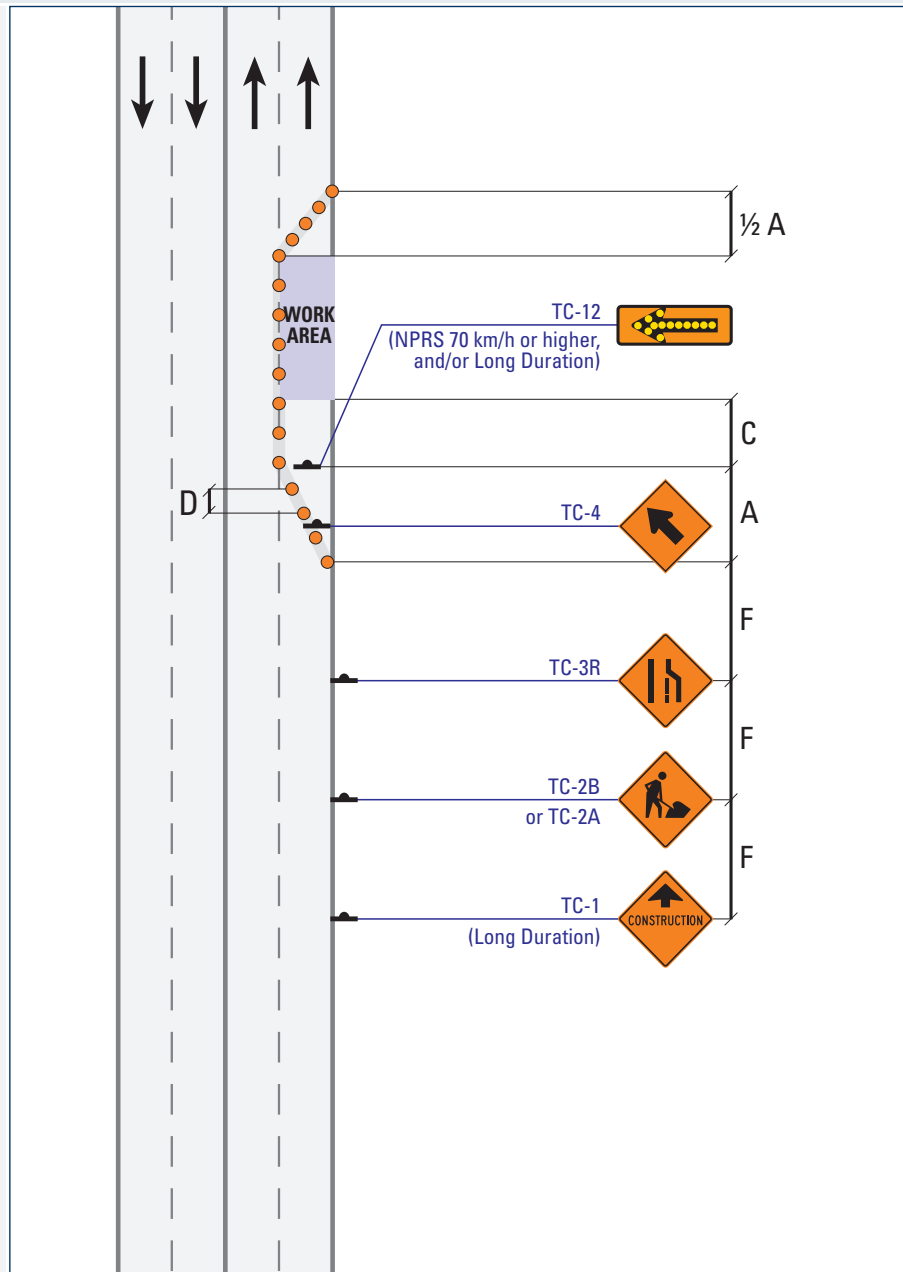




**US-17****Lane Closed****Multi-Lane Undivided****Mobile Operations****Intermittent****Very Short Duration****Short Duration****Long Duration****NOTES**

i) For Left Lane Closed Undivided or with no shoulder, see US-18.

For further detail on Work Zone components, see [Table B \(Short/Long, pg. 241\)](#).



Label	Description	Normal Posted Regulatory Speed (km/h)				
		50	60	70	80	90
<b>A</b>	Taper Length for Full Lane Closure (m)	60	85	155	180	200
<b>C</b>	Longitudinal Buffer Area (LBA) (m)	(30)	(40)	50	60	75
<b>D</b>	Maximum Distance between Markers (m)	6	9	9	12	12
	Minimum Number of Markers for Taper	5	7	9	11	13
<b>F</b>	Distance between Construction Signs (m)	50	90	120	140	150

**TS-23****Pedestrian Detour: Sidewalk Closure****Two-Lane, Two-Way**

## Mobile Operations

## Intermittent

## Very Short Duration

## Short Duration

## Long Duration

**NOTES**

- i) TC-40L/R Pedestrian Direction sign must be placed at the nearest upstream controlled pedestrian crossing (traffic signal or Pedestrian Crossover) in each direction.

For further detail on Work Zone components, see [Table B \(Short/Long, pg. 241\)](#).

