



**Legend**

**Study Area**

- Subject Property

**Tree Preservation**

- Tree to be Retained
- Neighbouring/Boundary Tree to be Retained but Injured (subject to owners approval)
- Neighbouring/Boundary to be Removed (subject to owners approval)
- Tree to be Removed
- Tree on Neighbouring Property (could not be assessed in detail)
- Minimum Tree Protection Zone for Nearby Neighbouring Trees

**Mitigation Measures**

- Sediment Fence (see ESC Plan)
- Sensitive Root Excavation Zone

**GENERAL NOTE:**

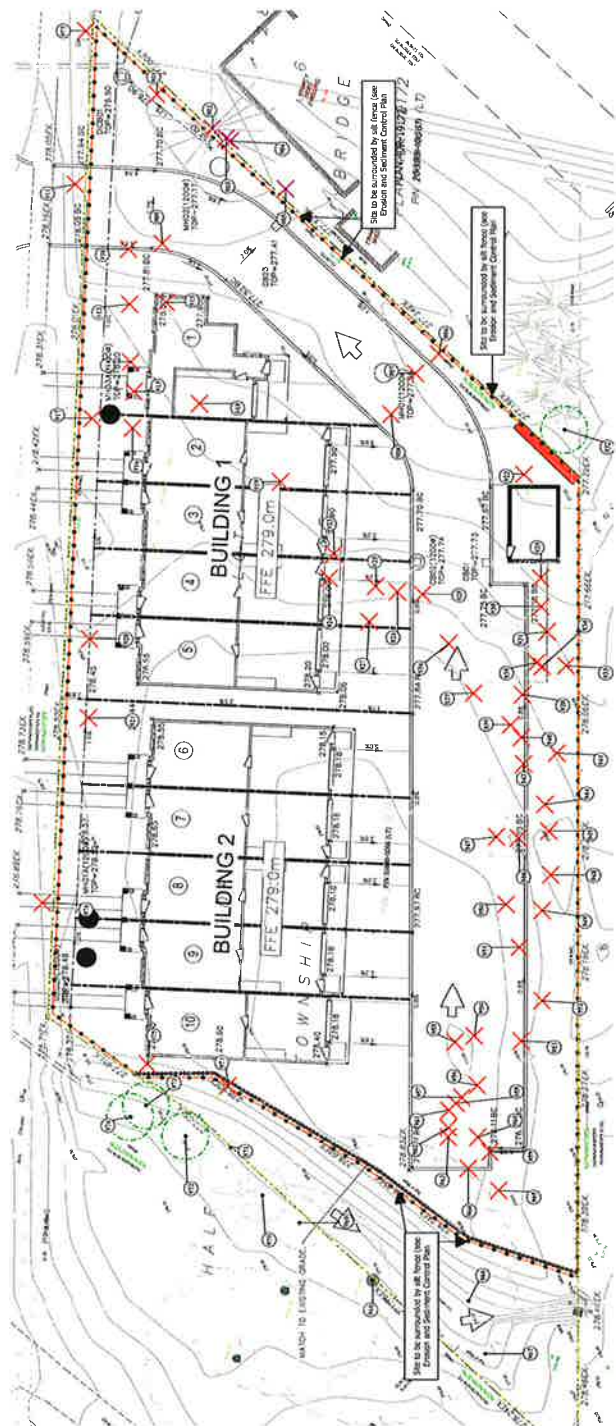
The tree health and structural assessment was undertaken in accordance with the standards set out in the International Society of Arboriculture (ISA) Best Management Practices (BMP) for Tree Assessment and Management (2017). The tree health and structural assessment was undertaken in accordance with the standards set out in the International Society of Arboriculture (ISA) Best Management Practices (BMP) for Tree Assessment and Management (2017). The tree health and structural assessment was undertaken in accordance with the standards set out in the International Society of Arboriculture (ISA) Best Management Practices (BMP) for Tree Assessment and Management (2017).

**TERRASTORY**  
environmental consulting inc.  
www.terrastory.com  
info@terrastory.com 905.745.5706  
Specialists in Natural Heritage, Tree Protection, and Environmental Policy

**Project No.:** 21016  
**Date:** 2022-04-05  
**By:** TK (Checked) AR  
**Orthoregistered Draft:** 0/16

**Location:**  
181 Toronto Street South,  
Township of Uxbridge

**Figure 4:**  
Tree Preservation Plan



**TREE INVENTORY**

ID	Common Name	Scientific Name	DBH (cm)	Height (m)	Health	Structure	Notes
1	...	...	...	...	...	...	...
2	...	...	...	...	...	...	...
3	...	...	...	...	...	...	...
4	...	...	...	...	...	...	...
5	...	...	...	...	...	...	...
6	...	...	...	...	...	...	...
7	...	...	...	...	...	...	...
8	...	...	...	...	...	...	...
9	...	...	...	...	...	...	...
10	...	...	...	...	...	...	...
11	...	...	...	...	...	...	...
12	...	...	...	...	...	...	...
13	...	...	...	...	...	...	...
14	...	...	...	...	...	...	...
15	...	...	...	...	...	...	...
16	...	...	...	...	...	...	...
17	...	...	...	...	...	...	...
18	...	...	...	...	...	...	...
19	...	...	...	...	...	...	...
20	...	...	...	...	...	...	...
21	...	...	...	...	...	...	...
22	...	...	...	...	...	...	...
23	...	...	...	...	...	...	...
24	...	...	...	...	...	...	...
25	...	...	...	...	...	...	...
26	...	...	...	...	...	...	...
27	...	...	...	...	...	...	...
28	...	...	...	...	...	...	...
29	...	...	...	...	...	...	...
30	...	...	...	...	...	...	...
31	...	...	...	...	...	...	...
32	...	...	...	...	...	...	...
33	...	...	...	...	...	...	...
34	...	...	...	...	...	...	...
35	...	...	...	...	...	...	...
36	...	...	...	...	...	...	...
37	...	...	...	...	...	...	...
38	...	...	...	...	...	...	...
39	...	...	...	...	...	...	...
40	...	...	...	...	...	...	...
41	...	...	...	...	...	...	...
42	...	...	...	...	...	...	...
43	...	...	...	...	...	...	...
44	...	...	...	...	...	...	...
45	...	...	...	...	...	...	...
46	...	...	...	...	...	...	...
47	...	...	...	...	...	...	...
48	...	...	...	...	...	...	...
49	...	...	...	...	...	...	...
50	...	...	...	...	...	...	...
51	...	...	...	...	...	...	...
52	...	...	...	...	...	...	...
53	...	...	...	...	...	...	...
54	...	...	...	...	...	...	...
55	...	...	...	...	...	...	...
56	...	...	...	...	...	...	...
57	...	...	...	...	...	...	...
58	...	...	...	...	...	...	...
59	...	...	...	...	...	...	...
60	...	...	...	...	...	...	...
61	...	...	...	...	...	...	...
62	...	...	...	...	...	...	...
63	...	...	...	...	...	...	...
64	...	...	...	...	...	...	...
65	...	...	...	...	...	...	...
66	...	...	...	...	...	...	...
67	...	...	...	...	...	...	...
68	...	...	...	...	...	...	...
69	...	...	...	...	...	...	...
70	...	...	...	...	...	...	...
71	...	...	...	...	...	...	...
72	...	...	...	...	...	...	...
73	...	...	...	...	...	...	...
74	...	...	...	...	...	...	...
75	...	...	...	...	...	...	...
76	...	...	...	...	...	...	...
77	...	...	...	...	...	...	...
78	...	...	...	...	...	...	...
79	...	...	...	...	...	...	...
80	...	...	...	...	...	...	...
81	...	...	...	...	...	...	...
82	...	...	...	...	...	...	...
83	...	...	...	...	...	...	...
84	...	...	...	...	...	...	...
85	...	...	...	...	...	...	...
86	...	...	...	...	...	...	...
87	...	...	...	...	...	...	...
88	...	...	...	...	...	...	...
89	...	...	...	...	...	...	...
90	...	...	...	...	...	...	...
91	...	...	...	...	...	...	...
92	...	...	...	...	...	...	...
93	...	...	...	...	...	...	...
94	...	...	...	...	...	...	...
95	...	...	...	...	...	...	...
96	...	...	...	...	...	...	...
97	...	...	...	...	...	...	...
98	...	...	...	...	...	...	...
99	...	...	...	...	...	...	...
100	...	...	...	...	...	...	...

**TREE REMOVAL AND PRESERVATION NOTES:**

- GENERAL:**
- CONSTRUCTION ACTIVITIES WILL TREAT ALL TREES RECOMMENDED FOR RETENTION SHOWN HEREIN AS CONSTRAINTS.
  - ALL NECESSARY TREE REMOVALS WILL BE COMPLETED OUTSIDE THE PRIMARY BIRD NESTING AND BAT ACTIVITY PERIODS (I.E. TO BE COMPLETED BETWEEN OCTOBER 1 AND MARCH 31). IF A TREE IS TO BE REMOVED, IT SHOULD BE REMOVED BY A QUALIFIED ECOLOGIST WITHIN TWO (2) DAYS OF THE COMMENCEMENT OF TREE REMOVAL ACTIVITIES TO DETERMINE HABITAT SUITABILITY AND/OR CONFIRM THE PRESENCE/ABSENCE OF NESTING BIRDS AND ROOSTING BATS. SHOULD A NESTING BIRD OR ROOSTING BAT BE IDENTIFIED, A MITIGATION PLAN MUST BE DEVELOPED (WHICH MAY INCLUDE DISCUSSIONS WITH RELEVANT AGENCIES) TO ADDRESS REGULATORY REQUIREMENTS.
  - ROOT SENSITIVE EXCAVATION:**  
3. ROOT SENSITIVE EXCAVATION TECHNIQUES (EITHER PNEUMATIC EXCAVATION, HYDRO-VAC EXCAVATION, OR HAND-DIGGING) WILL BE EMPLOYED WITHIN THE AREAS SHOWN DURING SEDIMENT FENCE INSTALLATION AND PRIOR TO THE COMMENCEMENT OF GRADING OR MACHINE EXCAVATION. THE EXCAVATION TRENCH WILL BE APPROXIMATELY 30 CM DEEP AND 15 CM WIDE TO EXPOSE ROOTS AT THE EXCAVATION SITE. THE EXCAVATION TRENCHES WILL BE SPACED AT 1.0 M ON CENTER. THE SEDIMENT FENCE WILL BE UNDERTAKEN ON THE OUTSIDE EDGE OF THE TREE PROTECTION ZONE ONLY.
  - FOLLOWING ROOT EXPOSURE, A QUALIFIED ARBORIST WILL SUPERVISE THE ROOT CUTTING PROCEDURES AND EXAMINE IF ANY EXCESSIVE OR LARGE STRUCTURAL ROOTS REQUIRE CUTTING. ALL EXCESSIVE OR LARGE STRUCTURAL ROOTS WILL BE CUTTED AT AN ANGLE TO THE TRUNK. THE PRACTICES LESSER OF STRUCTURAL ROOTS MAY NECESSITATE REMOVAL OF THE SUBJECT TREE, TO BE DETERMINED BY THE ON-SITE QUALIFIED ARBORIST.**
- SHARE/BOUNDARY TREES:**
- THE APPLICANT MUST SECURE APPROVAL TO IMPACT BOUNDARY/NEIGHBOURING TREES FROM RELEVANT PROPERTY OWNERS (179 TORONTO STREET SOUTH) PRIOR TO CONSTRUCTION.

**RECEIVED**  
JUL 13 2022  
TOWNSHIP OF UXBRIDGE  
DEVELOPMENT SERVICES