

EROSION & SILTATION CONTROL PLAN NOTES

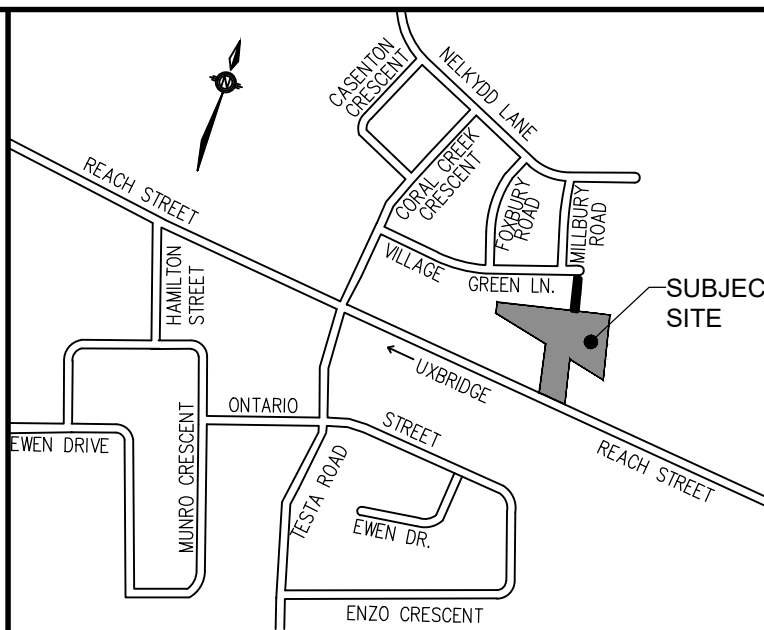
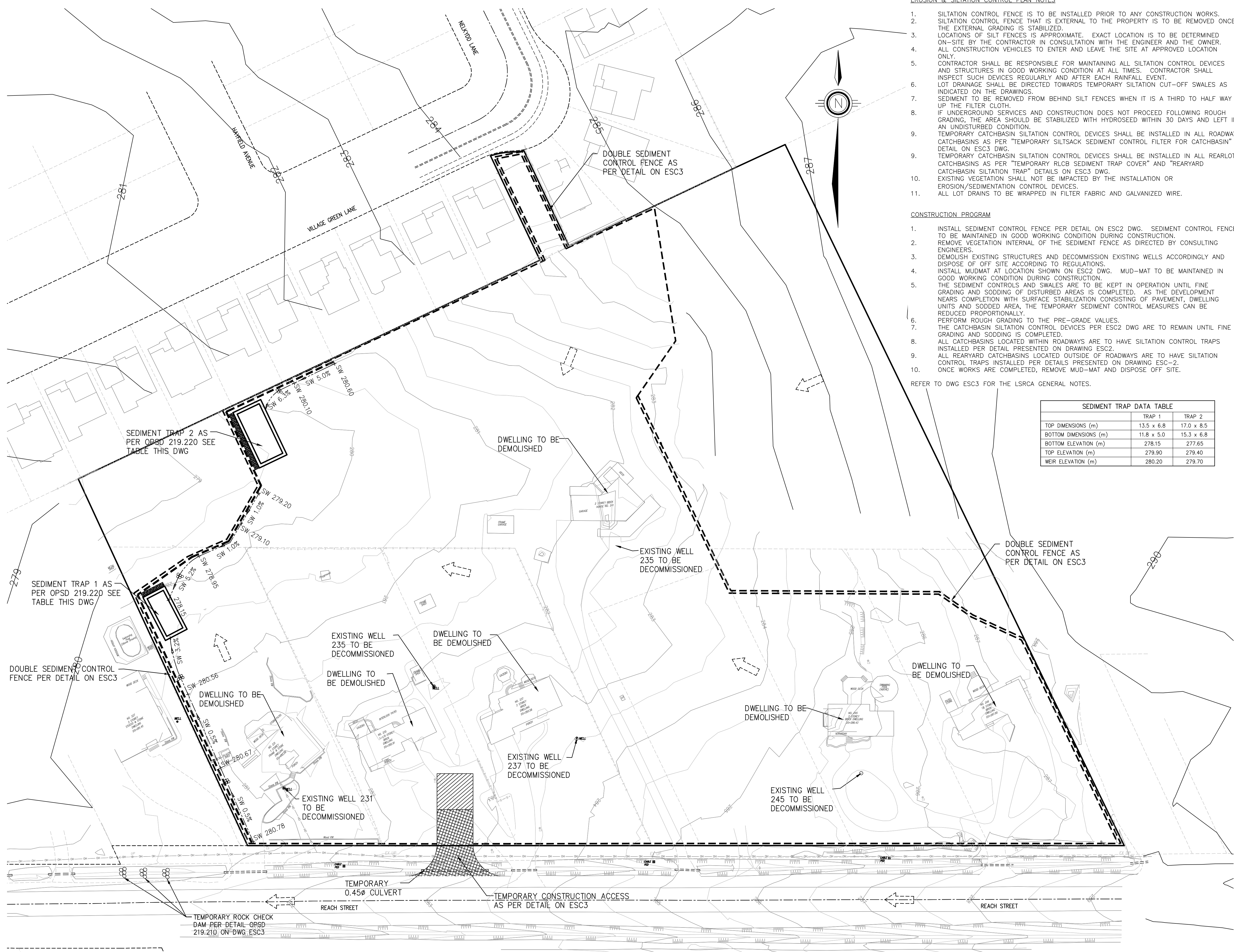
- SILTATION CONTROL FENCE IS TO BE INSTALLED PRIOR TO ANY CONSTRUCTION WORKS. SILTATION CONTROL FENCE THAT IS EXTERNAL TO THE PROPERTY IS TO BE REMOVED ONCE THE EXTERNAL GRADING IS STABILIZED.
- LOCATIONS OF SILT FENCES IS APPROXIMATE. EXACT LOCATION IS TO BE DETERMINED ON-SITE BY THE CONTRACTOR IN CONSULTATION WITH THE ENGINEER AND THE OWNER. ALL CONSTRUCTION VEHICLES TO ENTER AND LEAVE THE SITE AT APPROVED LOCATION ONLY.
- CONTRACTOR SHALL BE RESPONSIBLE FOR MAINTAINING ALL SILTATION CONTROL DEVICES AND STRUCTURES IN GOOD WORKING CONDITION AT ALL TIMES. CONTRACTOR SHALL INSPECT SUCH DEVICES REGULARLY AND AFTER EACH RAINFALL EVENT.
- LOT DRAINAGE SHALL BE DIRECTED TOWARDS TEMPORARY SILTATION CUT-OFF SWALES AS INDICATED ON THE DRAWINGS.
- SEDIMENT TO BE REMOVED FROM BEHIND SILT FENCES WHEN IT IS A THIRD TO HALF WAY UP THE FILTER CLOTH.
- IF UNDERGROUND SERVICES AND CONSTRUCTION DOES NOT PROCEED FOLLOWING ROUGH GRADING, THE AREA SHOULD BE STABILIZED WITH HYDROSEED WITHIN 30 DAYS AND LEFT IN AN UNDISTURBED CONDITION.
- TEMPORARY CATCHBASIN SILTATION CONTROL DEVICES SHALL BE INSTALLED IN ALL ROADWAY CATCHBASINS AS PER "TEMPORARY SILTSACK SEDIMENT CONTROL FILTER FOR CATCHBASIN" DETAIL ON ESC3 DWG.
- TEMPORARY CATCHBASIN SILTATION CONTROL DEVICES SHALL BE INSTALLED IN ALL REARLOT CATCHBASINS AS PER "TEMPORARY RLCB SEDIMENT TRAP COVER" AND "REARYARD CATCHBASIN SILTATION TRAP" DETAILS ON ESC3 DWG.
- EXISTING VEGETATION SHALL NOT BE IMPACTED BY THE INSTALLATION OR EROSION/SEDIMENTATION CONTROL DEVICES.
- ALL LOT DRAINS TO BE WRAPPED IN FILTER FABRIC AND GALVANIZED WIRE.

CONSTRUCTION PROGRAM

- INSTALL SEDIMENT CONTROL FENCE PER DETAIL ON ESC2 DWG. SEDIMENT CONTROL FENCE TO BE MAINTAINED IN GOOD WORKING CONDITION DURING CONSTRUCTION.
- REMOVE VEGETATION INTERNAL OF THE SEDIMENT FENCE AS DIRECTED BY CONSULTING ENGINEERS.
- DEMOLISH EXISTING STRUCTURES AND DECOMMISSION EXISTING WELLS ACCORDINGLY AND DISPOSE OF OFF SITE ACCORDING TO REGULATIONS.
- INSTALL MUDMAT AT LOCATION SHOWN ON ESC2 DWG. MUD-MAT TO BE MAINTAINED IN GOOD WORKING CONDITION DURING CONSTRUCTION.
- THE SEDIMENT CONTROLS AND SWALES ARE TO BE KEPT IN OPERATION UNTIL FINE GRADING AND SODDING OF DISTURBED AREAS IS COMPLETED. AS THE DEVELOPMENT NEARS COMPLETION WITH SURFACE STABILIZATION CONSISTING OF PAVEMENT, DWELLING UNITS AND SODDED AREA, THE TEMPORARY SEDIMENT CONTROL MEASURES CAN BE REDUCED PROPORTIONALLY.
- PERFORM ROUGH GRADING TO THE PRE-GRADE VALUES.
- THE CATCHBASIN SILTATION CONTROL DEVICES PER ESC2 DWG ARE TO REMAIN UNTIL FINE GRADING AND SODDING IS COMPLETED.
- ALL CATCHBASINS LOCATED WITHIN ROADWAYS ARE TO HAVE SILTATION CONTROL TRAPS INSTALLED PER DETAIL PRESENTED ON DRAWING ESC2.
- ALL REARYARD CATCHBASINS LOCATED OUTSIDE OF ROADWAYS ARE TO HAVE SILTATION CONTROL TRAPS INSTALLED PER DETAILS PRESENTED ON DRAWING ESC-2.
- ONCE WORKS ARE COMPLETED, REMOVE MUD-MAT AND DISPOSE OFF SITE.

REFER TO DWG ESC3 FOR THE LSRCA GENERAL NOTES.

SEDIMENT TRAP DATA TABLE		
	TRAP 1	TRAP 2
TOP DIMENSIONS (m)	13.5 x 6.8	17.0 x 8.5
BOTTOM DIMENSIONS (m)	11.8 x 5.0	15.3 x 6.8
BOTTOM ELEVATION (m)	278.15	277.65
TOP ELEVATION (m)	279.90	279.40
WEIR ELEVATION (m)	280.20	279.70



KEYMAP N.T.S.

LEGEND:

- SINGLE SEDIMENT FENCE
- DOUBLE SEDIMENT FENCE
- PROPOSED 3:1 SLOPING
- PROPOSED ROCK CHECK DAM
- EXISTING OVERLAND FLOW ROUTE
- EXISTING TREE TO BE REMOVED PROVIDED BY COSBURN NAUBORIS LTD
- EXISTING TREE TO BE PRESERVED PROVIDED BY COSBURN NAUBORIS LTD
- MUDMAT PER DETAIL
- INTERIM INTERCEPTOR SWALE
- CATCHBASIN SILT TRAP PER DETAIL DESCRIBED ON DRAWING ESC 1 AND SPECIFIED ON DETAIL ON DRAWING ESC-5

REVIEWED BY \_\_\_\_\_  
TOWNSHIP OF UXBRIDGE  
DATE \_\_\_\_\_  
TOWNSHIP ENGINEER FOR THE TOWNSHIP OF UXBRIDGE

APPROVED BY \_\_\_\_\_  
REGION OF DURHAM  
DATE \_\_\_\_\_

**BENCHMARK:**  
ELEVATIONS ARE GEODETIC AND REFERRED TO THE MTO MONUMENT NO. 778488, ELEVATION = 267.903 M.

**NOTE:** ALL DIMENSIONS AND ELEVATIONS IN METRES UNLESS NOTED OTHERWISE. ALL PIPE SIZES IN MILLIMETRES.

No.	REVISIONS TO DRAWING	BY	DATE	APPR.

ALL PREVIOUS ISSUES OF THIS DRAWING ARE SUPERSEDED

CLIENT  
**VENETIAN GROUP**

MUNICIPALITY  
TOWNSHIP OF UXBRIDGE  
REGION OF DURHAM

PROJECT TITLE  
REACH STREET LANDS

SHEET TITLE  
EROSION & SEDIMENT CONTROL PLAN  
STAGE 1 - PRE SERVICING

**SKA** SABOURIN KIMBLE & ASSOCIATES LTD.  
CONSULTING ENGINEERS



DESIGNED KLD DRAWN RAV CHECKED WJL  
SCALE 1:500 DATE OCTOBER 2021  
PROJECT NUMBER 17:386 DWG. NUMBER ESC1