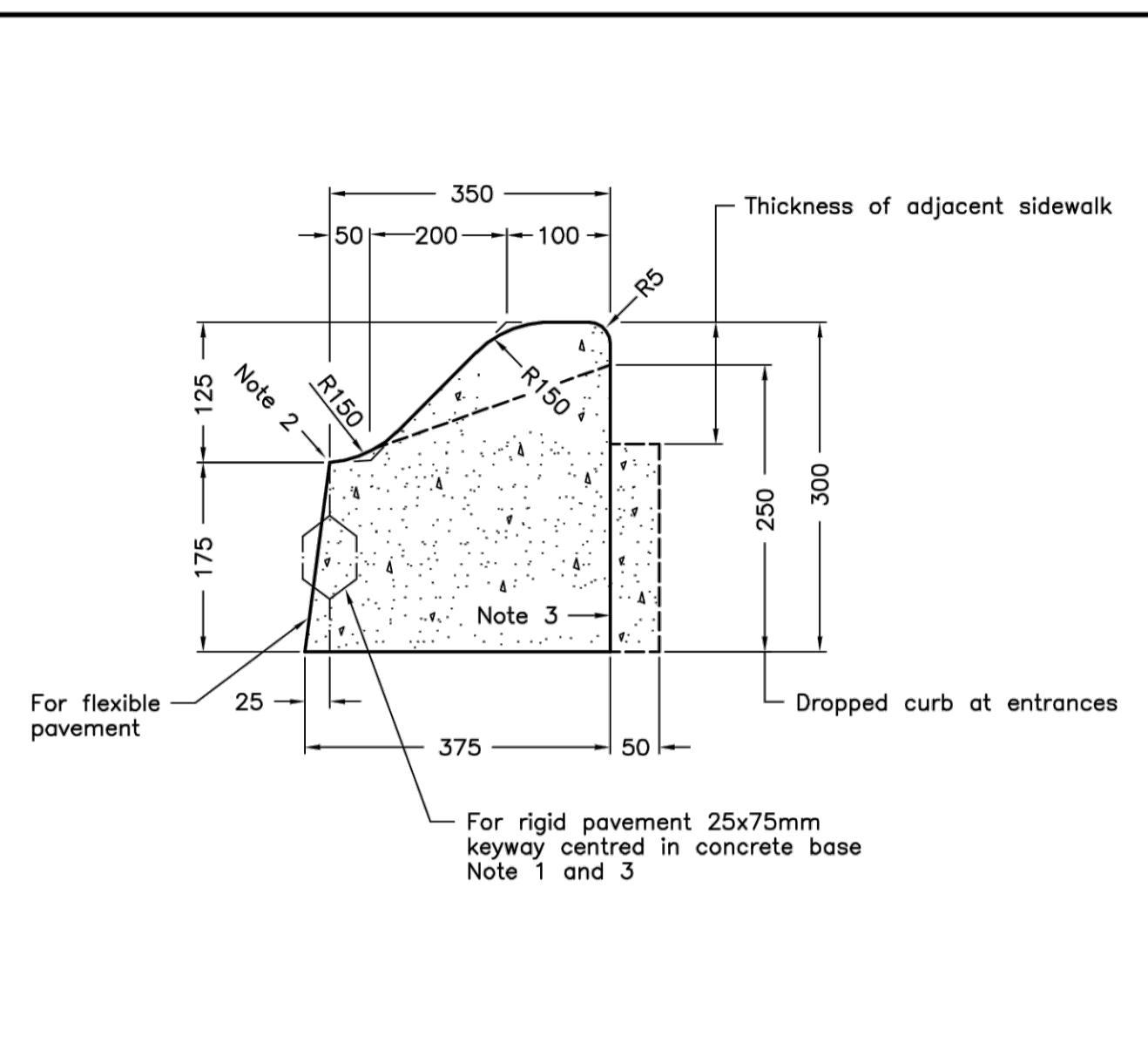


- NOTES:**
- When curb and gutter is adjacent to concrete pavement or base, this drawing shall be used in conjunction with OPSD 552.010 and 552.020.
 - Flexible and composite pavement shall be placed 5mm above the adjacent edge of gutter.
 - For slipforming procedure a 5% batter is acceptable.
 - Treatment at entrances shall be according to OPSD 351.010.
 - Outlet treatment shall be according to the OPSD 610 Series.
 - The transition from one curb type to another shall be a minimum length of 3.0m, except in conjunction with guide rail where it shall be according to the OPSD 900 Series.
 - All dimensions are in millimetres unless otherwise shown.

ONTARIO PROVINCIAL STANDARD DRAWING Nov 2012 Rev 2

CONCRETE BARRIER CURB WITH NARROW GUTTER

OPSD 600.080

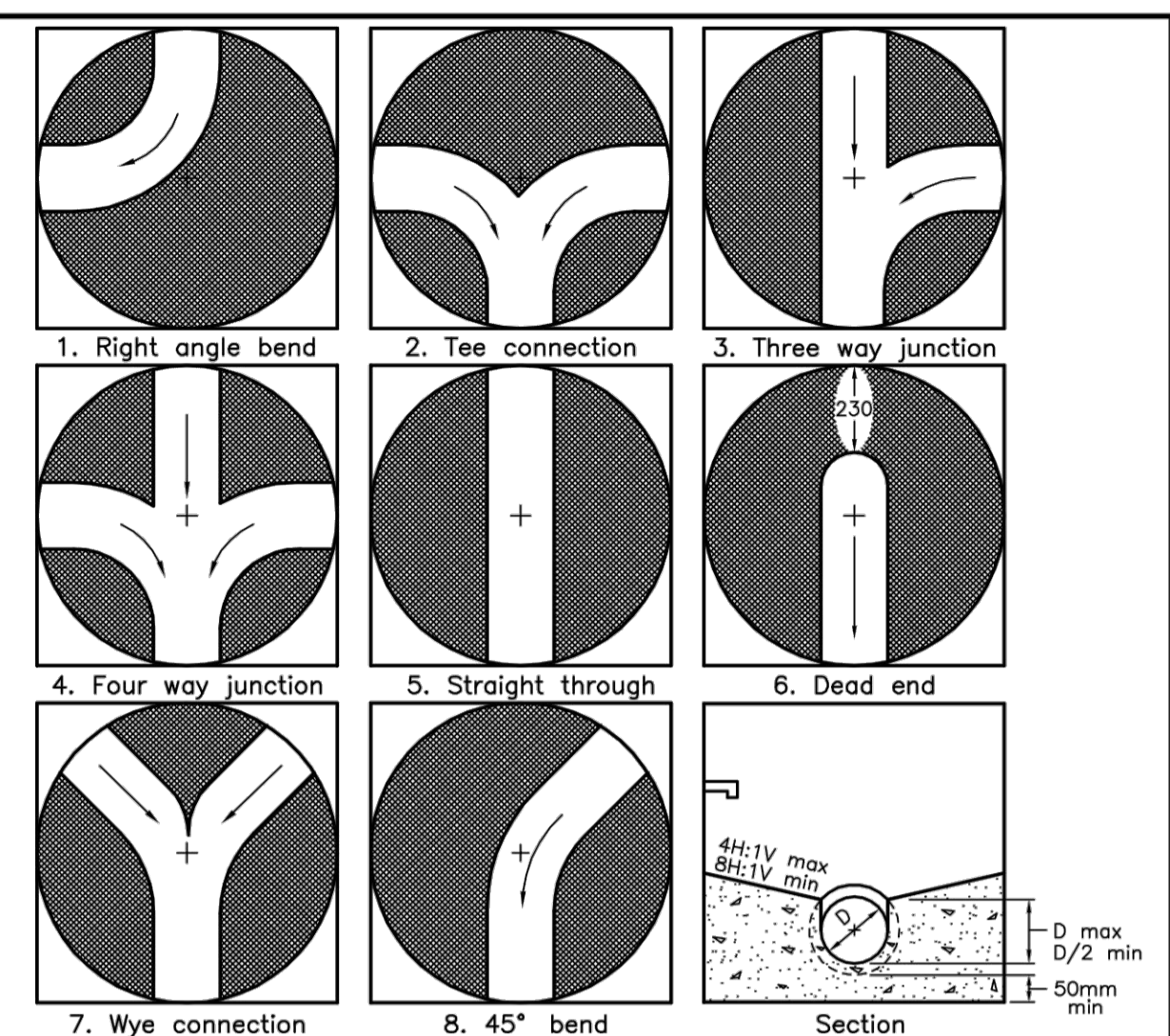


- NOTES:**
- When curb and gutter is adjacent to concrete pavement or base, this drawing shall be used in conjunction with OPSD 552.010 and 552.020.
 - Flexible and composite pavement shall be placed 5mm above the adjacent edge of gutter.
 - For slipforming procedure a 5% batter is acceptable.
 - Treatment at entrances shall be according to OPSD 351.010.
 - Outlet treatment shall be according to the OPSD 610 Series.
 - The transition from one curb type to another shall be a minimum length of 3.0m, except in conjunction with guide rail where it shall be according to the OPSD 900 Series.
 - All dimensions are in millimetres unless otherwise shown.

ONTARIO PROVINCIAL STANDARD DRAWING Nov 2012 Rev 2

CONCRETE SEMI-MOUNTABLE CURB WITH NARROW GUTTER

OPSD 600.090



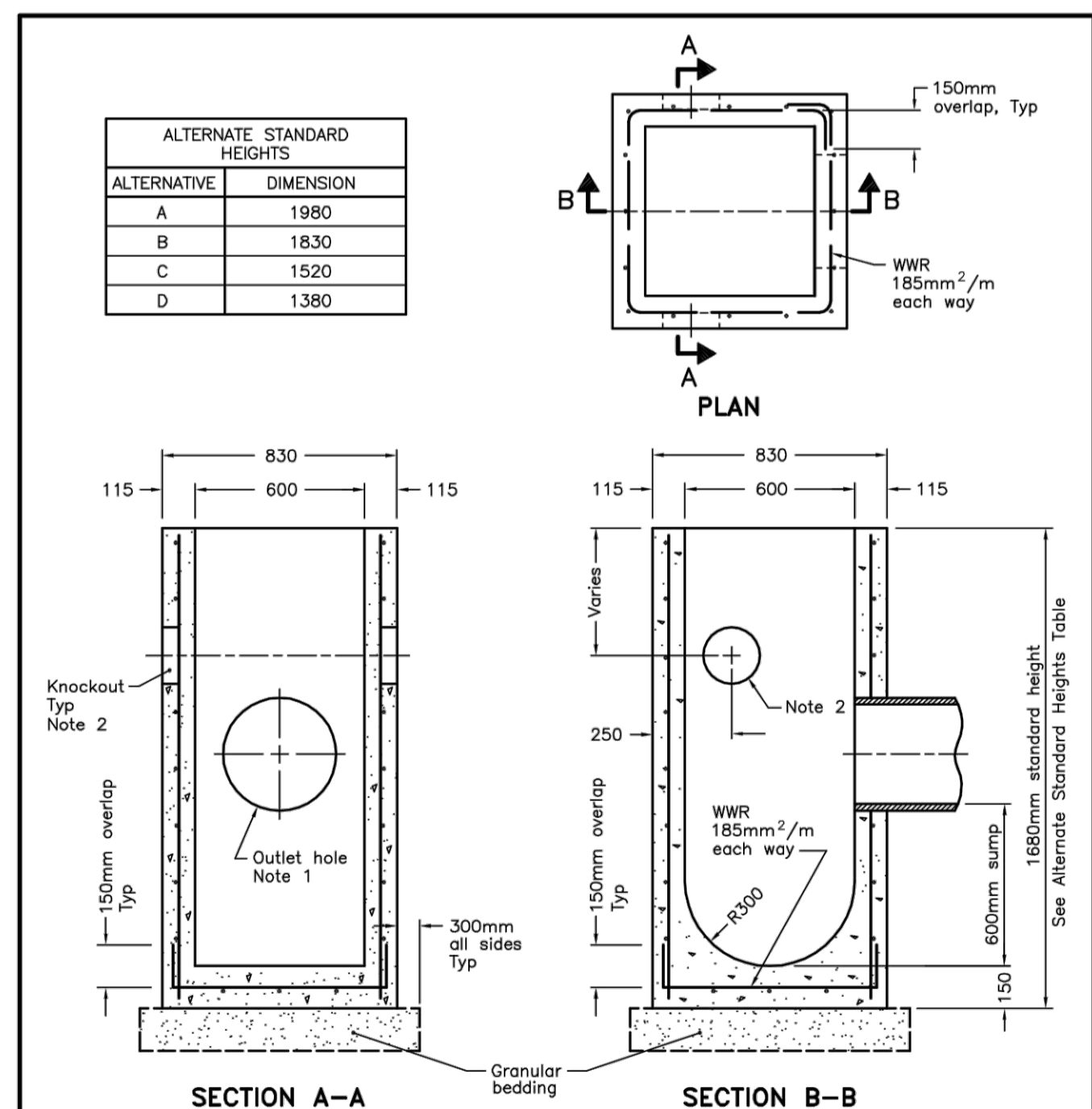
Maintenance Hole Diameter	No. 1-4			No. 5 and 6		No. 7	
	No. 1-4	No. 5 and 6	No. 8	Inlet Hole	Outlet Hole		
1200	700	860	780	700	860		
1500	860	1220	960	860	1170		
1800	1220	1485	1220	1220	1485		
2400	1485	2020	1760	1485	2020		
3000	1930	2450	2300	1930	2450		
3600	2470	3085	2730	2470	3085		

- NOTES:**
- Slopes shall be maintained from the outlet hole opening for top of benching.
 - Concrete for benching shall be 30MPa.
 - When benching is hand-finished, it shall be given wood float finish, channel shall be given steel trowel finish.
 - Benching slope and height shall be as specified.
 - When specified, maintenance holes that are 1200mm in diameter with a uniform channel for 200 or 250mm pipe may be prebenched at the manufacturer with standardized benching slope and channel orientation.
 - All dimensions are nominal.
 - All dimensions are in millimetres unless otherwise shown.

ONTARIO PROVINCIAL STANDARD DRAWING Nov 2014 Rev 4

MAINTENANCE HOLE BENCHING AND PIPE OPENING ALTERNATIVES

OPSD 701.021

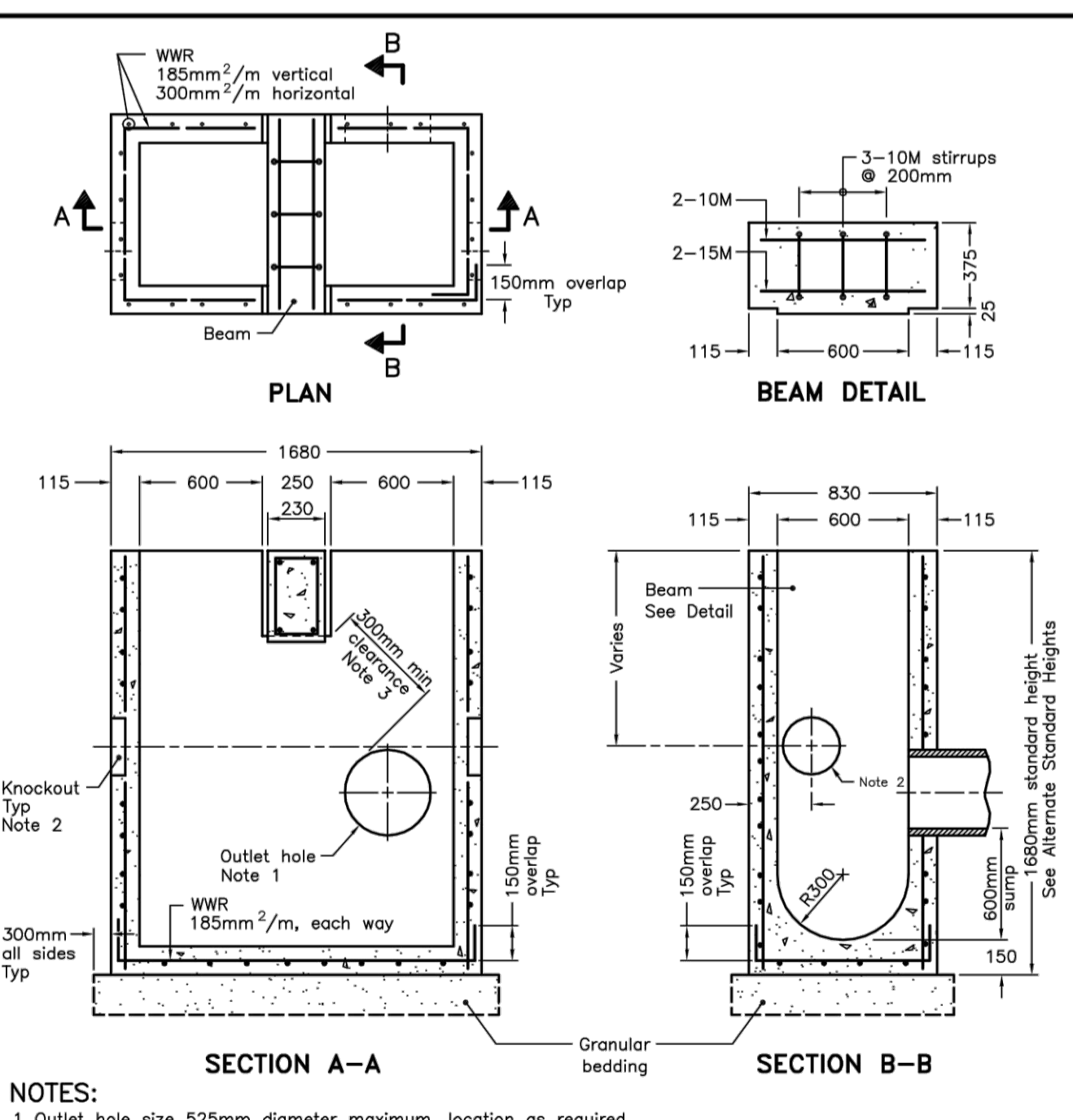


- NOTES:**
- Outlet hole size 525mm diameter maximum, location as required.
 - 200mm diameter knockout to accommodate subdrain. Knockout shall be 60mm deep.
 - Centre reinforcing in base slab and walls ± 20 mm.
 - Granular backfill shall be placed to a minimum thickness of 300mm all around the catch basin.
 - Frame, grate, and adjustment units shall be installed according to OPSD 704.010.
 - Pipe support shall be according to OPSD 708.020.
 - All dimensions are nominal.
 - All dimensions are in millimetres unless otherwise shown.

ONTARIO PROVINCIAL STANDARD DRAWING Nov 2014 Rev 3

PRECAST CONCRETE CATCH BASIN
600x600mm

OPSD 705.010

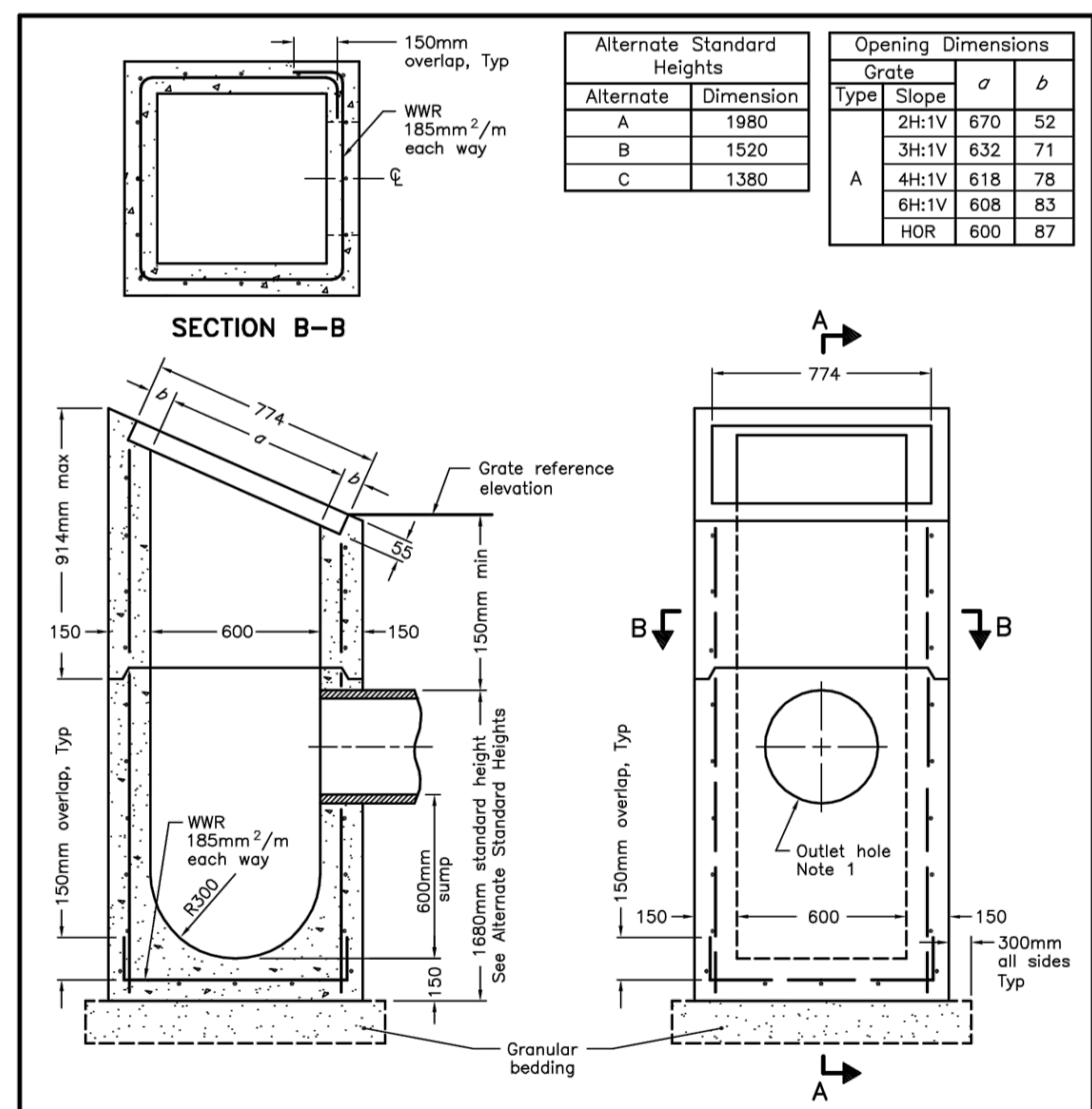


- NOTES:**
- Outlet hole size 525mm diameter maximum, location as required.
 - 200mm diameter knockout to accommodate subdrain. Knockout shall be 60mm deep.
 - Minimum clearance between beam recess and hole for pipe shall be 300mm or minimum clearance can be 150mm with addition of two 15M size rebar on 45 degree diagonal.
 - Centre reinforcing in base slab and walls ± 20 mm.
 - Granular backfill shall be placed to a minimum thickness of 300mm all around the catch basin.
 - Frame, grate, and adjustment units shall be installed according to OPSD 704.010.
 - Pipe support shall be according to OPSD 708.020.
 - All dimensions are nominal.
 - All dimensions are in millimetres unless otherwise shown.

ONTARIO PROVINCIAL STANDARD DRAWING Nov 2014 Rev 3

PRECAST CONCRETE TWIN INLET CATCH BASIN
600 x 1450mm

OPSD 705.020

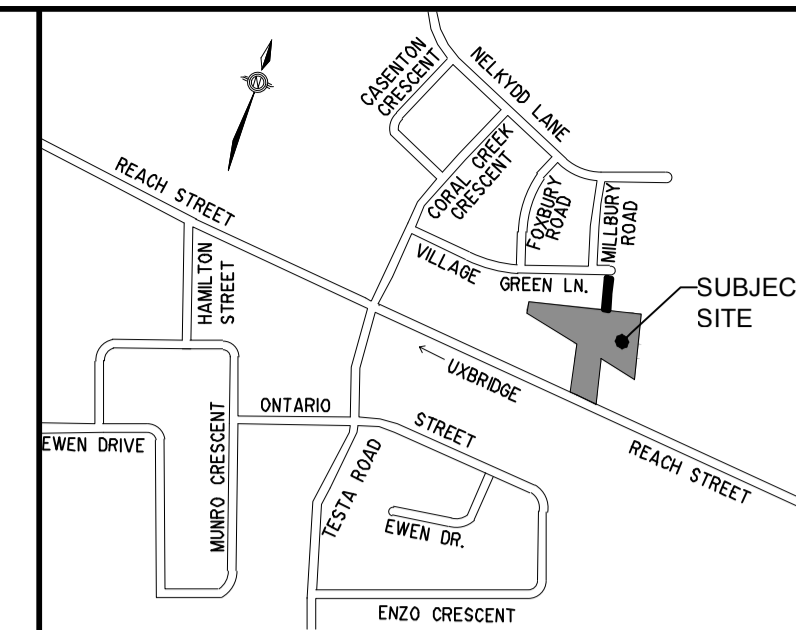


- NOTES:**
- Outlet hole size 525mm maximum diameter, location as required.
 - Where inlet is placed across ditch and is accessible to vehicular traffic, grating slope shall be 6H:1V or flatter.
 - Centre reinforcing in wall and slab ± 25 mm.
 - Granular backfill shall be placed to a minimum thickness of 300mm all around the ditch inlet.
 - Grating shall be according to OPSD 403.010.
 - Pipe support shall be according to OPSD 708.020.
 - All dimensions are nominal.
 - All dimensions are in millimetres unless otherwise shown.

ONTARIO PROVINCIAL STANDARD DRAWING Nov 2014 Rev 3

PRECAST CONCRETE DITCH INLET
600 x 600mm

OPSD 705.030



KEYMAP N.T.S.

REVIEWED BY: TOWNSHIP OF UXBRIDGE
DATE: _____
TOWNSHIP ENGINEER FOR THE TOWNSHIP OF UXBRIDGE

APPROVED BY: REGION OF DURHAM
DATE: _____

BENCHMARK:
ELEVATIONS ARE GEODETIC AND REFERRED TO THE MTO MONUMENT NO. 778488, ELEVATION = 267.903 M.

NOTE: ALL DIMENSIONS AND ELEVATIONS IN METRES UNLESS NOTED OTHERWISE. ALL PIPE SIZES IN MILLIMETRES.

No.	REVISIONS TO DRAWING	BY	DATE	APPR.
CLIENT: VENITIAN GROUP				
MUNICIPALITY: TOWNSHIP OF UXBRIDGE REGION OF DURHAM				
PROJECT TITLE: REACH STREET LANDS				
SHEET TITLE: OPSD STANDARDS				

ALL PREVIOUS ISSUES OF THIS DRAWING ARE SUPERSEDED

CLIENT: VENITIAN GROUP

MUNICIPALITY: TOWNSHIP OF UXBRIDGE REGION OF DURHAM

PROJECT TITLE: REACH STREET LANDS

SHEET TITLE: OPSD STANDARDS

SKA SABOURIN KIMBLE & ASSOCIATES LTD. CONSULTING ENGINEERS

DESIGNED: KLD DRAWN: RAV CHECKED: WJL
SCALE: SCALE 1:500 DATE: OCTOBER 2021
PROJECT NUMBER: 17:386 DWG. NUMBER: DET4
T-Number