

SERVICING CROSSING CLEARANCES

CROSSING DATA I BOTTOM OF STM PIPE 265.23 TOP OF SAN PIPE 284.80 CLEARANCE 0.43	CROSSING DATA II BOTTOM OF SAN PIPE 276.96 TOP OF STM PIPE 284.80 CLEARANCE 0.33
CROSSING DATA 2 BOTTOM OF SAN PIPE 285.22 TOP OF STM PIPE 286.74 CLEARANCE 0.48	CROSSING DATA I2 BOTTOM OF SAN PIPE 276.96 TOP OF STM PIPE 276.60 CLEARANCE 0.36
CROSSING DATA 3 BOTTOM OF PIPE 282.26 TOP OF STM PIPE 283.03 CLEARANCE 1.23	CROSSING DATA I3 BOTTOM OF SAN PIPE 276.43 TOP OF STM PIPE 278.22 CLEARANCE 0.21
CROSSING DATA 4 BOTTOM OF SAN PIPE 282.51 TOP OF STM PIPE 282.20 CLEARANCE 0.30	CROSSING DATA I4 BOTTOM OF SAN PIPE 279.94 TOP OF SAN PIPE 279.64 CLEARANCE 0.30
CROSSING DATA 5 RETAINING WALL BASE GRADE 284.34 TOP OF STM PIPE 280.90 +3.45m FOR RETAINING WALL FOUNDATION DESIGN + CLEARANCE.	CROSSING DATA I5 BOTTOM OF SAN PIPE 279.40 TOP OF STM PIPE 278.94 CLEARANCE 0.49
CROSSING DATA 6 RETAINING WALL BASE GRADE 285.61 TOP OF WATERMAIN PIPE 283.80 +1.8m FOR RETAINING WALL FOUNDATION DESIGN + CLEARANCE.	CROSSING DATA I6 BOTTOM OF WATERMAIN PIPE 280.45 TOP OF STM PIPE 278.57 CLEARANCE 1.88
CROSSING DATA 7 BOTTOM OF SAN PIPE 281.36 TOP OF STM PIPE 280.78 CLEARANCE 0.58	CROSSING DATA I7 BOTTOM OF SAN PIPE 279.44 TOP OF STM PIPE 279.99 CLEARANCE 0.45
CROSSING DATA 8 BOTTOM OF STM PIPE 279.78 TOP OF SAN PIPE 279.53 CLEARANCE 0.25	CROSSING DATA I8 BOTTOM OF SAN PIPE 279.87 TOP OF STM PIPE 279.57 CLEARANCE 0.30
CROSSING DATA 9 BOTTOM OF STM PIPE 279.46 TOP OF SAN PIPE 279.16 CLEARANCE 0.3	CROSSING DATA I9 BOTTOM OF SAN PIPE 279.51 TOP OF SAN PIPE 279.10 CLEARANCE 0.41
CROSSING DATA 10 BOTTOM OF STM PIPE 279.51 TOP OF SAN PIPE 279.10 CLEARANCE 0.41	

KEYMAP

LEGEND:

- PROPOSED SEWER FLOW DIRECTION
- PROPOSED HYDRANT AND VALVE
- PROPOSED VALVE AND BOX
- PROPOSED SANITARY MANHOLE
- PROPOSED STORM MANHOLE
- PROPOSED CATCHBASIN
- PROPOSED LID GRANULAR
- PROPOSED TRANSFORMER
- PROPOSED JOINT UTILITY TRENCH
- PROPOSED LIGHT STANDARD
- PROPOSED CROSSING LOCATION

REVIEWED BY: _____
TOWNSHIP OF UXBRIDGE

DATE: _____

TOWNSHIP ENGINEER FOR THE TOWNSHIP OF UXBRIDGE

APPROVED BY: _____
REGION OF DURHAM

DATE: _____

BENCHMARK:
ELEVATIONS ARE GEODETIC AND REFERRED TO THE MTO MONUMENT NO. 778488, ELEVATION = 267.903 M.

NOTE: ALL DIMENSIONS AND ELEVATIONS IN METRES UNLESS NOTED OTHERWISE. ALL PIPE SIZES IN MILLIMETRES.

NO. REVISIONS TO DRAWING BY DATE APPR.

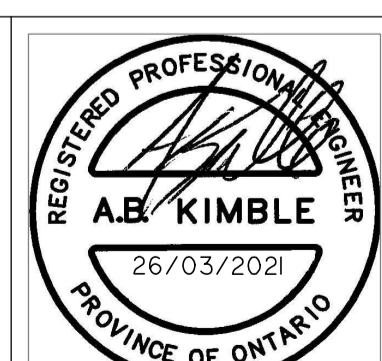
ALL PREVIOUS ISSUES OF THIS DRAWING ARE SUPERSEDED

CLIENT: **VENITIAN GROUP**

MUNICIPALITY: **TOWNSHIP OF UXBRIDGE
REGION OF DURHAM**

PROJECT TITLE: **REACH STREET LANDS**

SHEET TITLE: **SITE SERVICING PLAN**

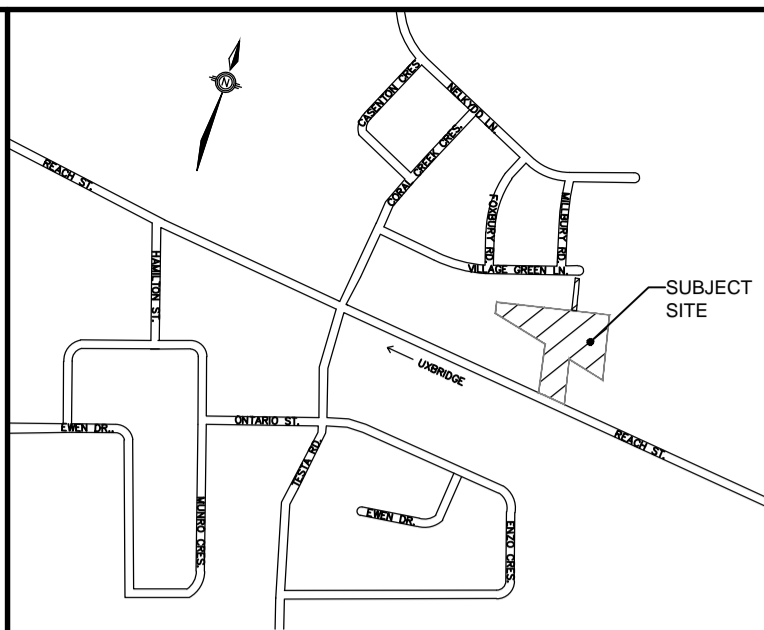
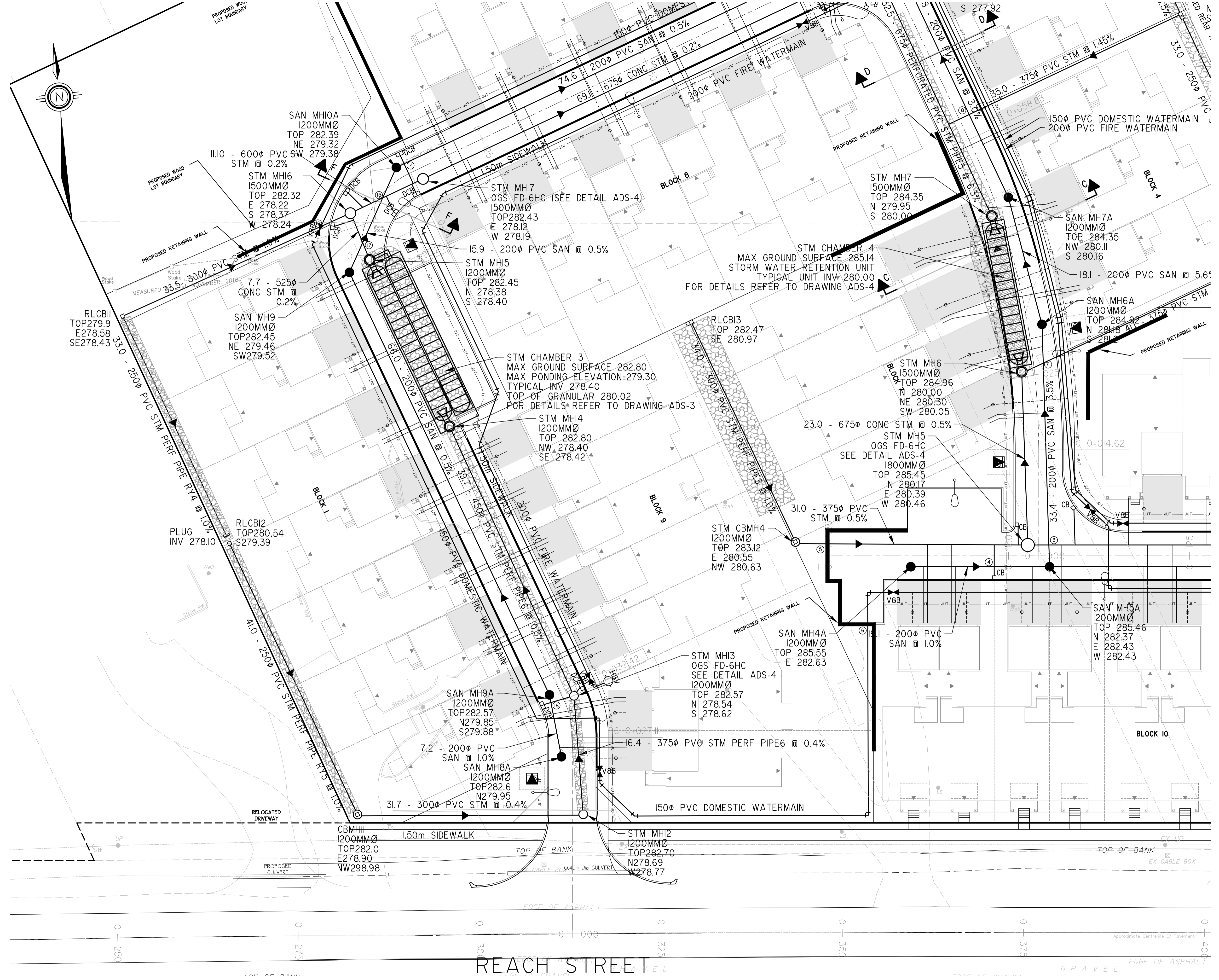


DESIGNED: KLD DRAWN: RAV CHECKED: ABK

SCALE: SCALE 1:500 DATE: JAN 2021

PROJECT NUMBER: **17:386** DWG. NUMBER: **SS**

FOR SITE SERVICING CONTINUATION
REFER TO DWG No. SSI



- LEGEND:**
- PROPOSED SEWER FLOW DIRECTION
 - PROPOSED HYDRANT AND VALVE
 - PROPOSED VALVE AND BOX
 - PROPOSED SANITARY MANHOLE
 - PROPOSED STORM MANHOLE
 - PROPOSED CATCHBASIN
 - PROPOSED LID GRANULAR
 - PROPOSED TRANSFORMER
 - PROPOSED JOINT UTILITY TRENCH
 - PROPOSED LIGHT STANDARD
 - PROPOSED CROSSING LOCATION

NOTE: CROSS-SECTIONS AVAILABLE ON DWG CS-1

REVIEWED BY: _____
TOWNSHIP OF UXBRIDGE

DATE: _____

TOWNSHIP ENGINEER FOR THE TOWNSHIP OF UXBRIDGE

APPROVED BY: _____
REGION OF DURHAM

DATE: _____

BENCHMARK:
ELEVATIONS ARE GEODETIC AND REFERRED TO THE MTO MONUMENT NO. 778488, ELEVATION = 267.903 M.

NOTE: ALL DIMENSIONS AND ELEVATIONS IN METRES UNLESS NOTED OTHERWISE. ALL PIPE SIZES IN MILLIMETRES.

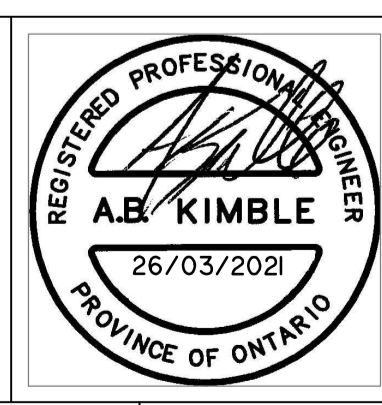
No.	REVISIONS TO DRAWING	BY	DATE	APPR.
ALL PREVIOUS ISSUES OF THIS DRAWING ARE SUPERSEDED				

CLIENT: **VENITIAN GROUP**

MUNICIPALITY: TOWNSHIP OF UXBRIDGE
REGION OF DURHAM

PROJECT TITLE: REACH STREET LANDS

SHEET TITLE: SITE SERVICING PLAN - WEST



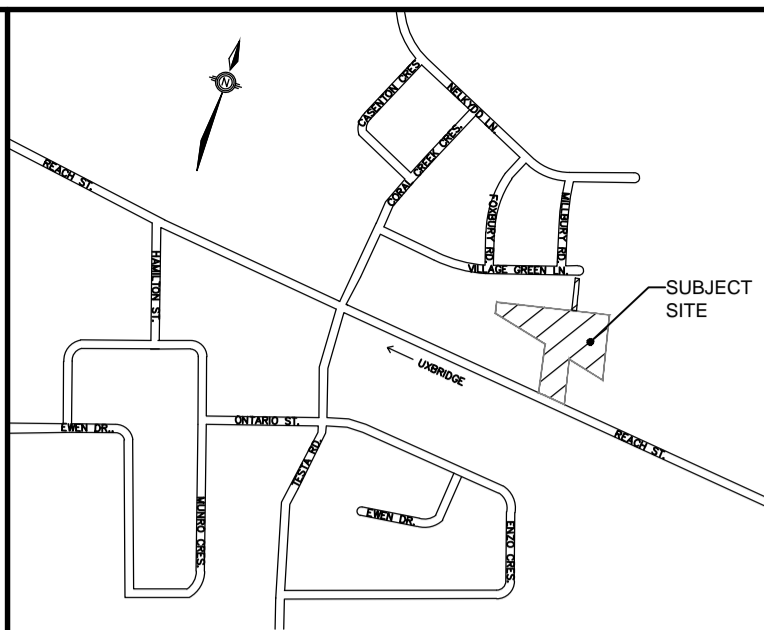
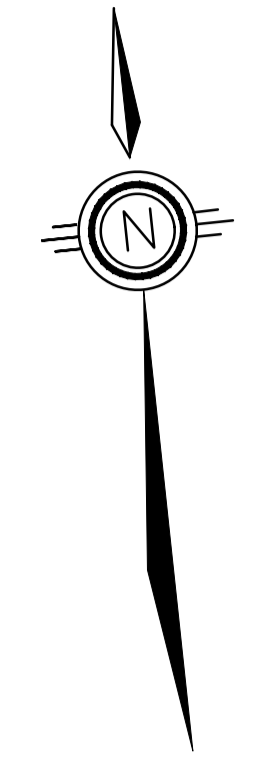
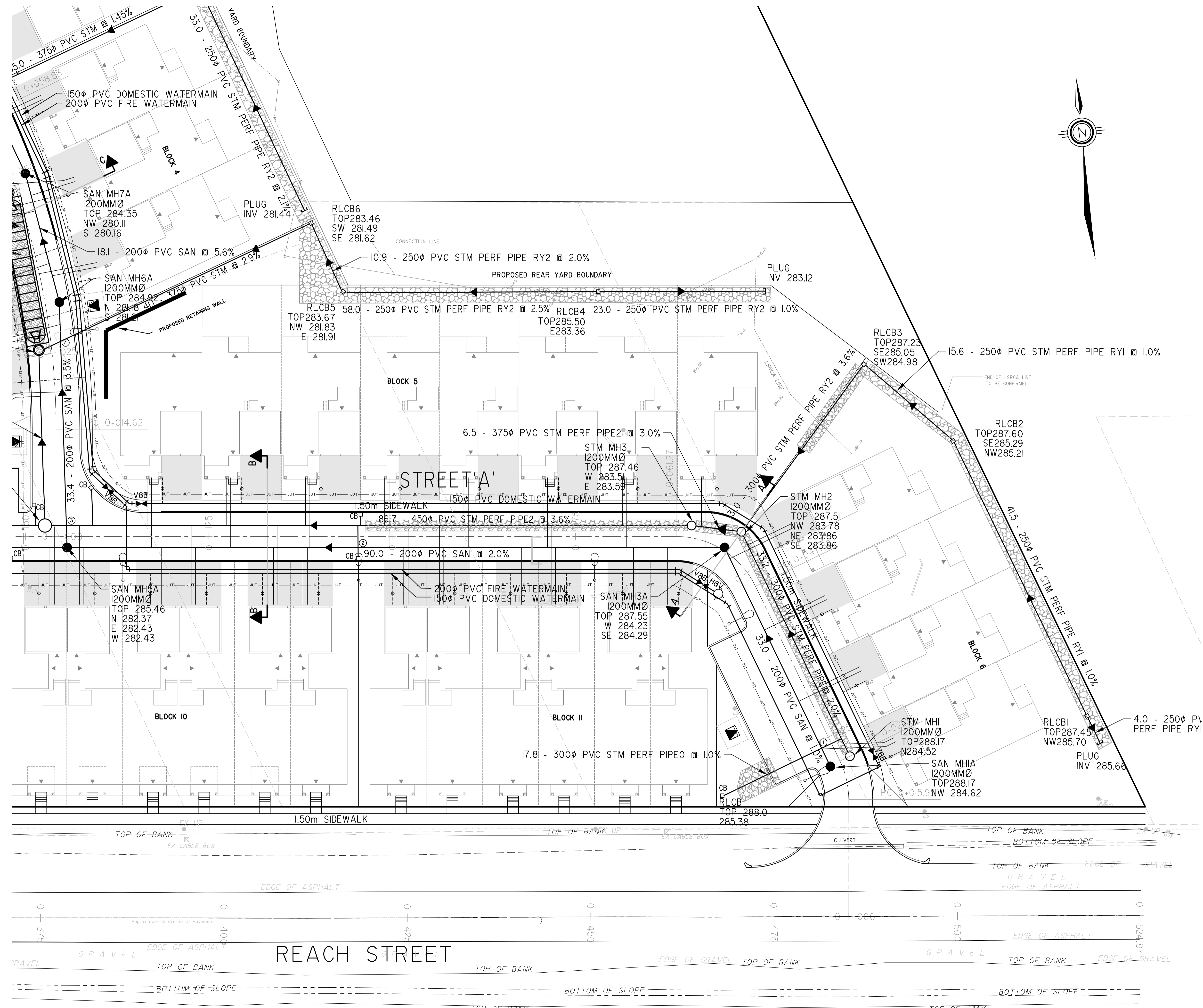
DESIGNED: KLD	DRAWN: RAV	CHECKED: ABK
SCALE: SCALE 1:250	DATE: JAN 2021	DWG. NUMBER: 17:386
PROJECT NUMBER: 17:386		DWG. NUMBER: SS-2

T-Number

CAD FILE: P:\17386\Drawings\Plan\Phase 1\Substation Drawing\386 - SERVICING.dwg

FOR SITE SERVICING CONTINUATION
REFER TO DWG No. SSI

FOR SITE SERVICING CONTINUATION
REFER TO DWG No. SS2



KEYMAP N.T.S.

- LEGEND:**
- PROPOSED SEWER FLOW DIRECTION
 - PROPOSED HYDRANT AND VALVE
 - PROPOSED VALVE AND BOX
 - PROPOSED SANITARY MANHOLE
 - PROPOSED STORM MANHOLE
 - PROPOSED CATCHBASIN
 - PROPOSED LID GRANULAR
 - PROPOSED TRANSFORMER
 - PROPOSED JOINT UTILITY TRENCH
 - PROPOSED LIGHT STANDARD
 - PROPOSED CROSSING LOCATION

NOTE: CROSS-SECTIONS AVAILABLE ON DWG CS-1

REVIEWED BY _____
TOWNSHIP OF UXBRIDGE
DATE _____
TOWNSHIP ENGINEER FOR THE TOWNSHIP OF UXBRIDGE

APPROVED BY _____
REGION OF DURHAM
DATE _____

BENCHMARK:
ELEVATIONS ARE GEODETIC AND REFERRED TO THE MTO MONUMENT NO. 778488, ELEVATION = 267.903 M.

NOTE: ALL DIMENSIONS AND ELEVATIONS IN METRES UNLESS NOTED OTHERWISE. ALL PIPE SIZES IN MILLIMETRES.

No.	REVISIONS TO DRAWING	BY	DATE	APPR.

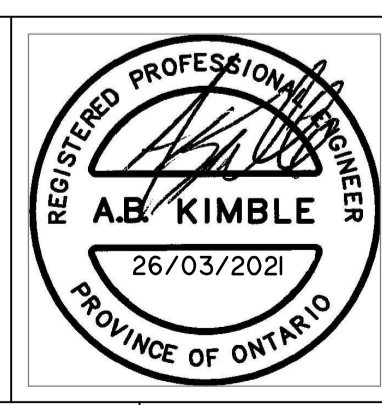
ALL PREVIOUS ISSUES OF THIS DRAWING ARE SUPERSEDED

CLIENT
VENITIAN GROUP

MUNICIPALITY
TOWNSHIP OF UXBRIDGE
REGION OF DURHAM

PROJECT TITLE
REACH STREET LANDS

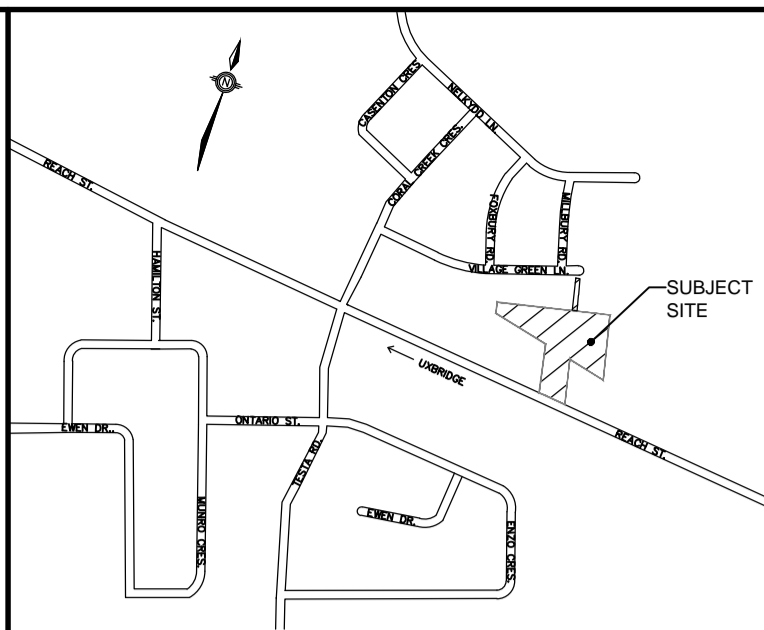
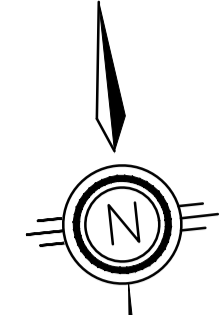
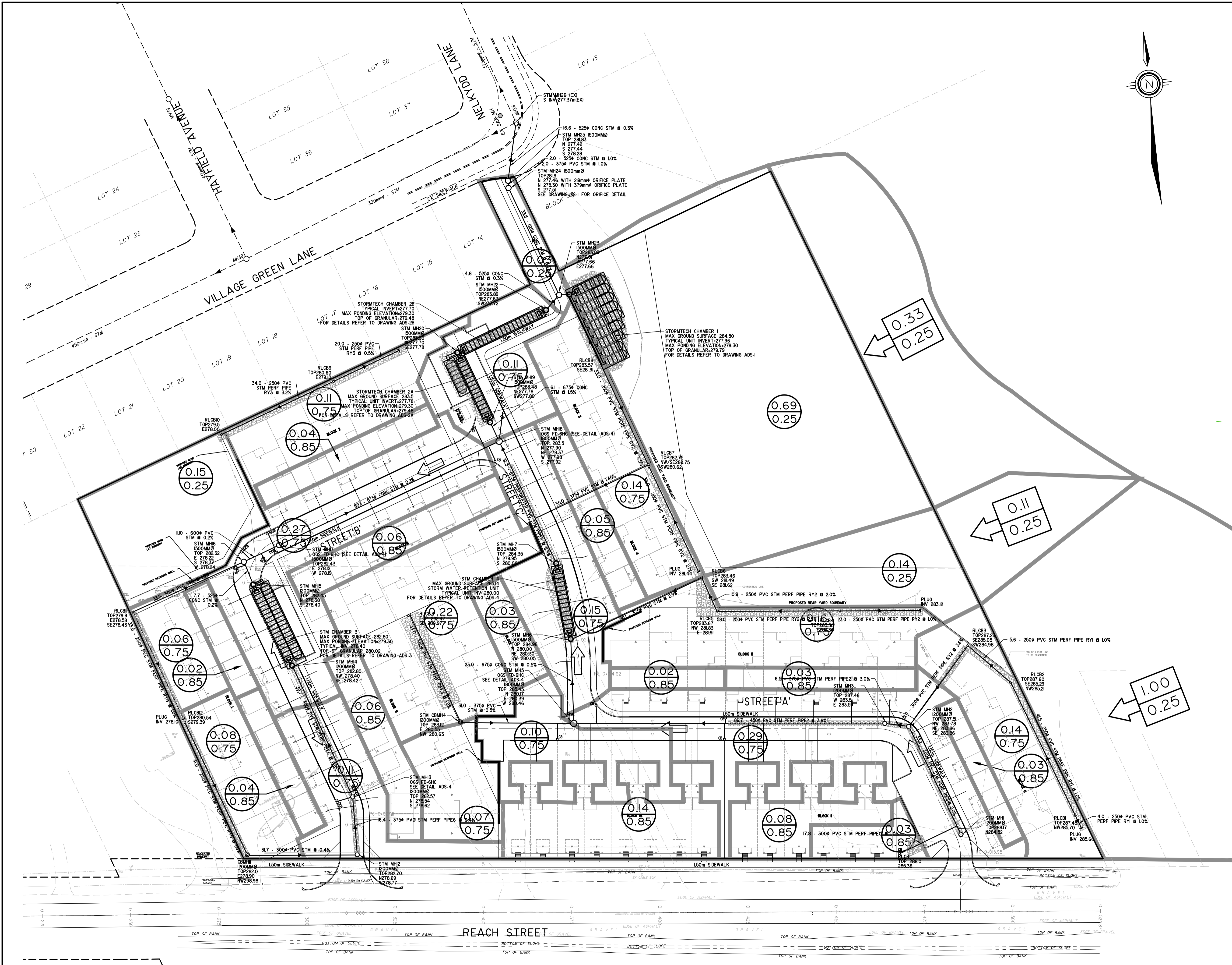
SHEET TITLE
SITE SERVICING PLAN - EAST



DESIGNED KLD DRAWN RAV CHECKED ABK
SCALE SCALE 1:250 DATE JAN 2021
PROJECT NUMBER 17:386 DWG. NUMBER SS-3

CAD FILE: P:\17386\Drawings\Plan\Phase 1\SiteServicing\Drawings\17386 - SERVICING.dwg

T-Number



KEYMAP N.T.S.

LEGEND

- 0.20 - AREA IN HECTARES
- 0.75 - RUNOFF COEFFICIENT
- STORM DRAINAGE BOUNDARY
- DIRECTION OF SEWER FLOW PROPOSED
- 0.33 - EXTERNAL DRAINAGE AREAS - AREA IN HECTARES
- 0.25 - EXTERNAL DRAINAGE AREAS - RUNOFF COEFFICIENT

REVIEWED BY _____
 TOWNSHIP OF UXBRIDGE
 DATE _____
 TOWNSHIP ENGINEER FOR THE TOWNSHIP OF UXBRIDGE

APPROVED BY _____
 REGION OF DURHAM
 DATE _____

BENCHMARK:
 ELEVATIONS ARE GEODETIC AND REFERRED TO THE MTO MONUMENT NO. 778488, ELEVATION = 267.903 M.

NOTE: ALL DIMENSIONS AND ELEVATIONS IN METRES UNLESS NOTED OTHERWISE. ALL PIPE SIZES IN MILLIMETRES.

No.	REVISIONS TO DRAWING	BY	DATE	APPR.

ALL PREVIOUS ISSUES OF THIS DRAWING ARE SUPERSEDED

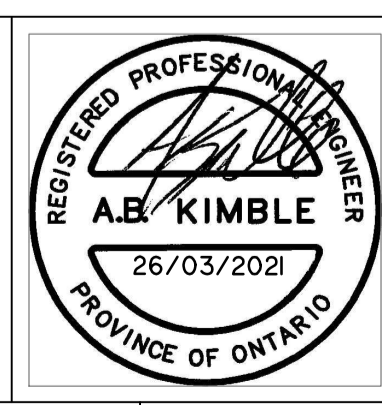
CLIENT: **VENITIAN GROUP**

MUNICIPALITY: **TOWNSHIP OF UXBRIDGE
REGION OF DURHAM**

PROJECT TITLE: **REACH STREET LANDS**

SHEET TITLE: **STORM DRAINAGE PLAN**

SKA SABOURIN KIMBLE & ASSOCIATES LTD.
CONSULTING ENGINEERS



DESIGNED: KLD DRAWN: RAV CHECKED: ABK
 SCALE: SCALE 1:500 DATE: JAN 2021
 PROJECT NUMBER: 17:386 DWG. NUMBER: SD-2

CAD FILE: P:\17\386\Drawings\Plan\Phase 3\Submission\Drawings\386 - SERVICES.dwg

