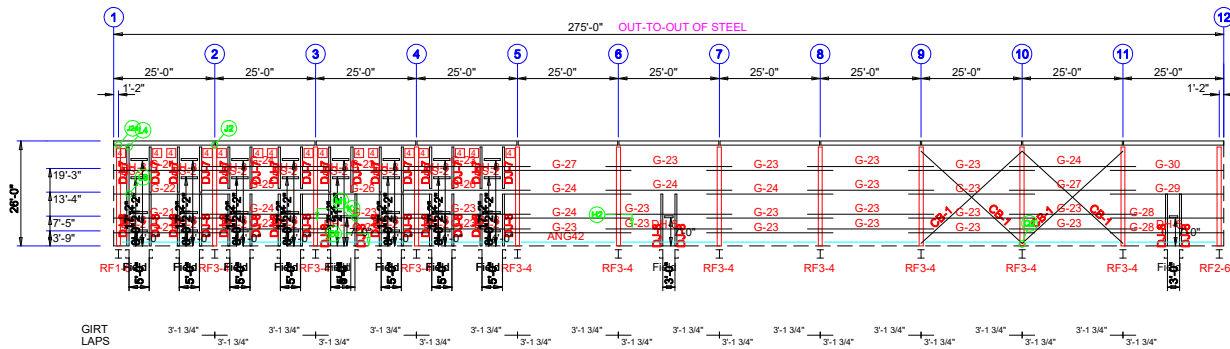
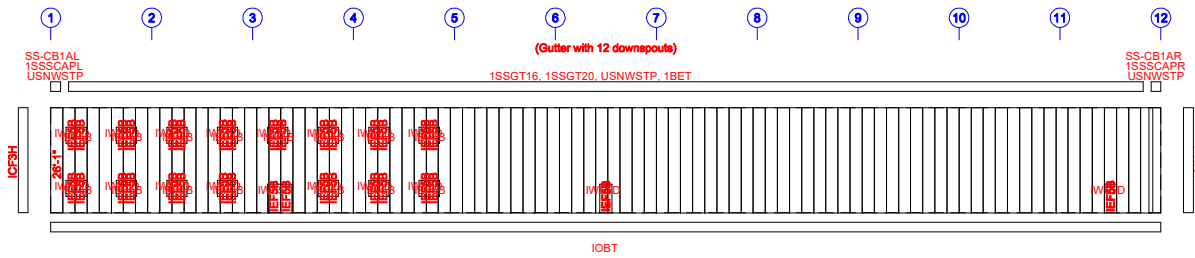


CONNECTION PLATES		
FRAME LINE A		
□ ID	QUAN	MARK/PART
4	16	JC



SIDEWALL FRAMING: FRAME LINE A



SIDEWALL SHEETING & TRIM: FRAME LINE A
PANELS: 26 Ga. R - TBD

TRIM COLORS	
EAVE TRIM = TBD	CORNER TRIM = TBD
BASE TRIM = TBD	GUTTER = TBD
DOOR TRIM = TBD	DOWNSPOUTS = TBD
RAKE TRIM = TBD	
* LINER TRIM = Liner panel color	
* SOFFIT TRIM = Soffit panel color	
* ONLY APPLICABLE IF LINER TRIM OR SOFFIT PANEL IS INDICATED ON BUILDING ORDER.	

GENERAL NOTES:

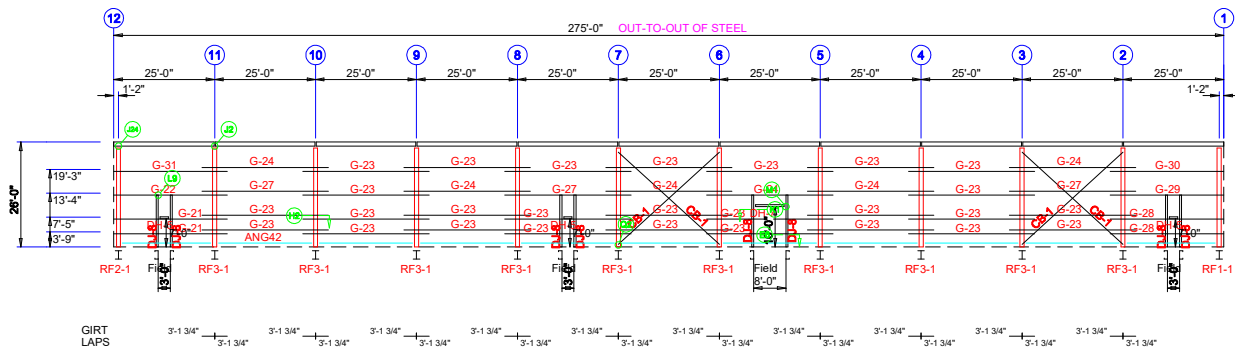
1. Use TEK5WW screws in place of SD150 panel screws at all 10 gage members.
2. All connections to door or window jambs where the clip is not designated in the clip table / drawing are made with JC# clips. (#= Girt Depth).

F.O. 104284 AGAIN

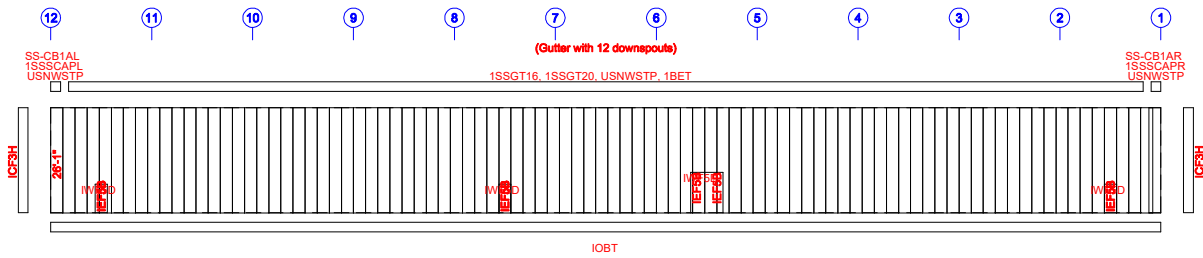
REVISION HISTORY	
REV.	DESCRIPTION

<p>DRAWING STATUS</p> <p>FOR APPROVAL: THESE DRAWINGS ARE FOR APPROVAL ONLY. THEY ARE NOT FINAL AND ARE FOR CONCEPTUAL REPRESENTATION ONLY. THEIR PURPOSE IS TO CONFIRM PROPER INTERPRETATION OF THE INFORMATION PROVIDED. ANY CHANGES TO THE DRAWINGS FOR CONSTRUCTION CAN BE CONSIDERED AS COMPLETE.</p> <p>FOR PERMIT: THESE DRAWINGS ARE FOR PERMIT ONLY. THEY ARE NOT FINAL. ONLY DRAWINGS ISSUED FOR CONSTRUCTION CAN BE CONSIDERED AS COMPLETE.</p> <p>FOR CONSTRUCTION: THESE DRAWINGS ARE FOR CONSTRUCTION ONLY. THEY ARE NOT FINAL. ONLY DRAWINGS ISSUED FOR CONSTRUCTION CAN BE CONSIDERED AS COMPLETE.</p>	<p>DATE</p>
---	-------------

100'-0" x 275'-0" x 26'-0"
DATE: 8/ 8/22 REVISION: 0
ENG: DWN: APPD:



SIDEWALL FRAMING: FRAME LINE E



SIDEWALL SHEETING & TRIM: FRAME LINE E

PANELS: 26 Ga. R - TBD

TRIM COLORS	
EAVE TRIM = TBD	CORNER TRIM = TBD
BASE TRIM = TBD	GUTTER = TBD
DOOR TRIM = TBD	DOWNSPOUTS = TBD
RAKE TRIM = TBD	
* LINER TRIM = Liner panel color	
* SOFFIT TRIM = Soffit panel color	

* ONLY APPLICABLE IF LINER TRIM OR SOFFIT PANEL IS INDICATED ON BUILDING ORDER.

GENERAL NOTES:

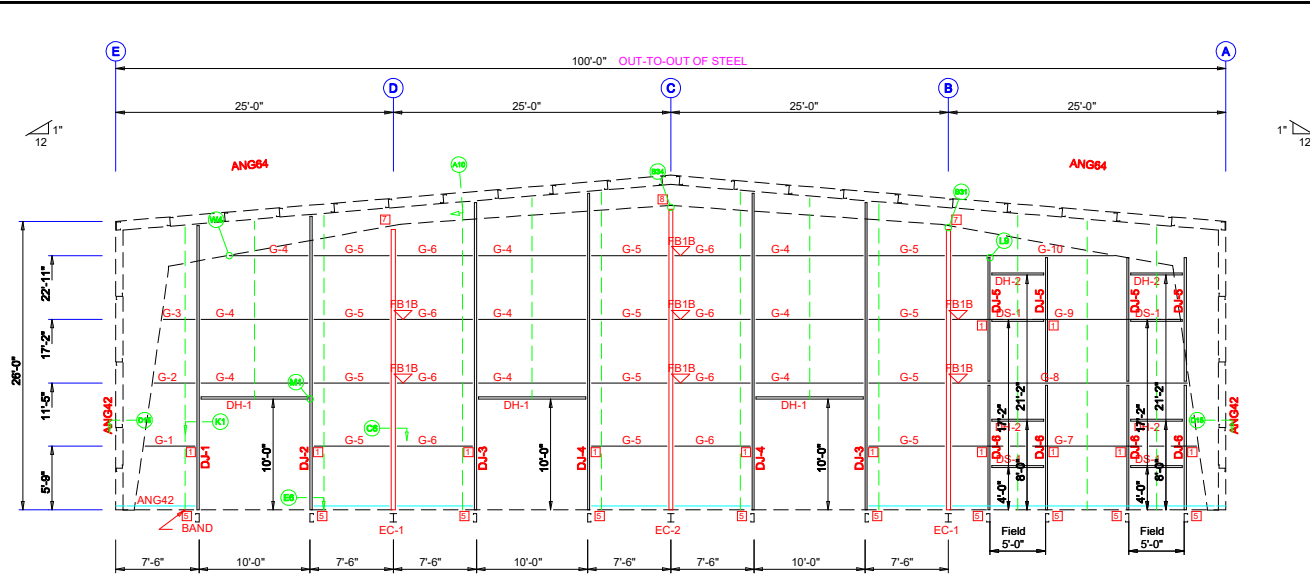
1. Use TEK5WW screws in place of SD150 panel screws at all 10 gage members.
2. All connections to door or window jambs where the clip is not designated in the clip table / drawing are made with JC# clips (#= Girt Depth).

F.O. 104284 AGAIN

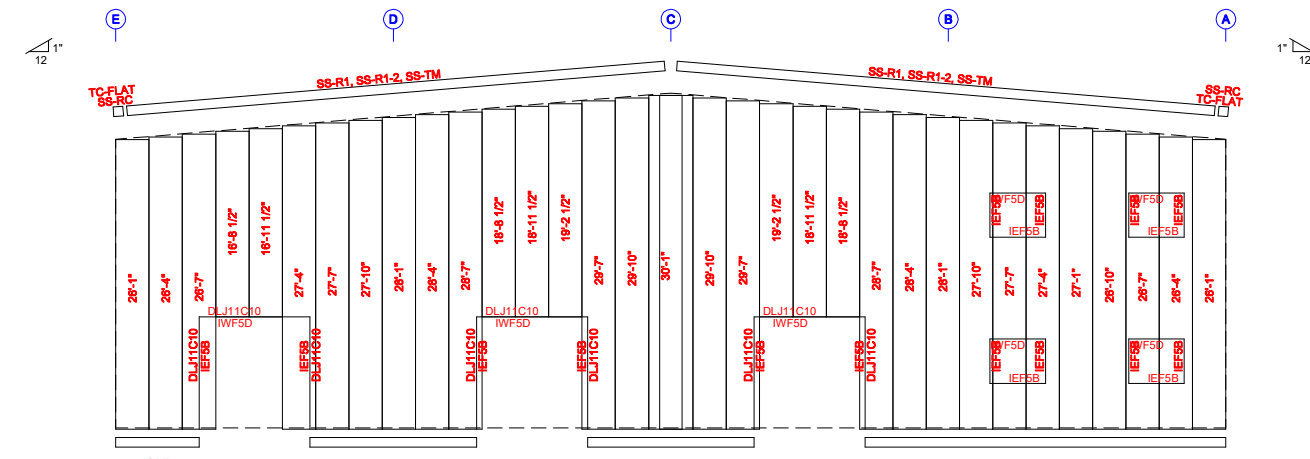
REVISION HISTORY	
REV.	DESCRIPTION

DRAWING STATUS	
<input type="checkbox"/>	FOR APPROVAL: THESE DRAWINGS, BEING FOR APPROVAL, ARE BY DEFINITION NOT FINAL, AND ARE FOR CONCEPTUAL REPRESENTATION ONLY. THEIR PURPOSE IS TO CONFIRM PROPER INTERPRETATION OF THE INFORMATION PROVIDED AND TO IDENTIFY ANY OMISSIONS THAT YOUR CONSTRUCTION CAN BE CONSIDERED AS COMPLETE.
<input type="checkbox"/>	FOR PERMIT: THESE DRAWINGS, BEING FOR PERMIT, ARE BY DEFINITION NOT FINAL. ONLY DRAWINGS ISSUED FOR CONSTRUCTION CAN BE CONSIDERED AS COMPLETE.
<input type="checkbox"/>	FOR CONSTRUCTION: FOR CONSTRUCTION, FINAL DRAWINGS.

100'-0" x 275'-0" x 26'-0"
 DATE: 8/ 8/22 REVISION: 0
 ENG: DWN: APPD:



ENDWALL FRAMING: FRAME LINE 1



ENDWALL SHEETING & TRIM: FRAME LINE 1
PANELS: 28 Ga. R - TBD

GENERAL NOTES:

1. Use TEK5WW screws in place of SD150 panel screws at all 10 gage members.
2. See detail C7A for field coping of coldform endwall column flange braces.
3. All connections to door or window jambs where the clip is not designated in the clip table / drawing are made with JC# clips. (#= Girt Depth).

BOLT TABLE				
FRAME LINE 1				
LOCATION	QUAN	TYPE	DIA	LENGTH
EC-1/FRAME	10	A325	3/4"	1 3/4"
EC-2/FRAME	8	A325	3/4"	1 3/4"
Jamb	8	A325	1/2"	1 1/4"

CONNECTION PLATES			
FRAME LINE 1			
ID	QUAN	MARK/PART	
1	12	a1	
5	10	f1	
7	2	ECXF	
8	1	n2	

FLANGE BRACE TABLE		
FRAME LINE 1		
ID	MARK	LENGTH
1	FB1B	11 7/8"

1" / 12

1" / 12

TRIM COLORS	
EAVE TRIM = TBD	CORNER TRIM = TBD
BASE TRIM = TBD	GUTTER = TBD
DOOR TRIM = TBD	DOWNSPOUTS = TBD
RAKE TRIM = TBD	
* LINER TRIM = Liner panel color	
* SOFFIT TRIM = Soffit panel color	

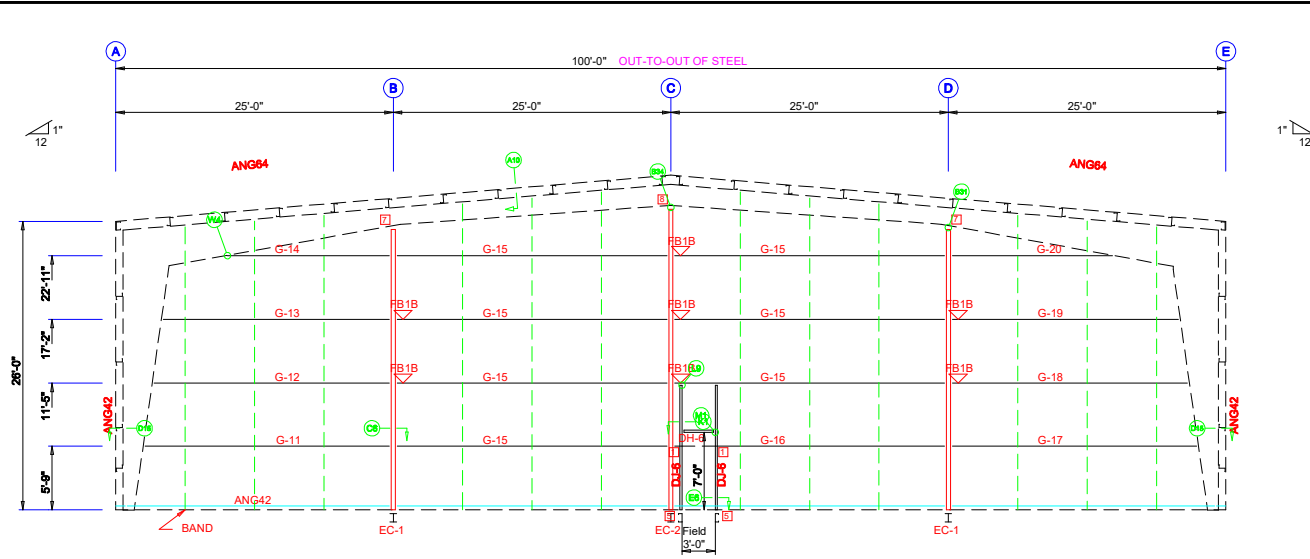
* ONLY APPLICABLE IF LINER TRIM OR SOFFIT PANEL IS INDICATED ON BUILDING ORDER.

100'-0" x 275'-0" x 26'-0"	REVISION: 0	APPD:
DATE: 8/ 8/22	DWN:	
ENG:		

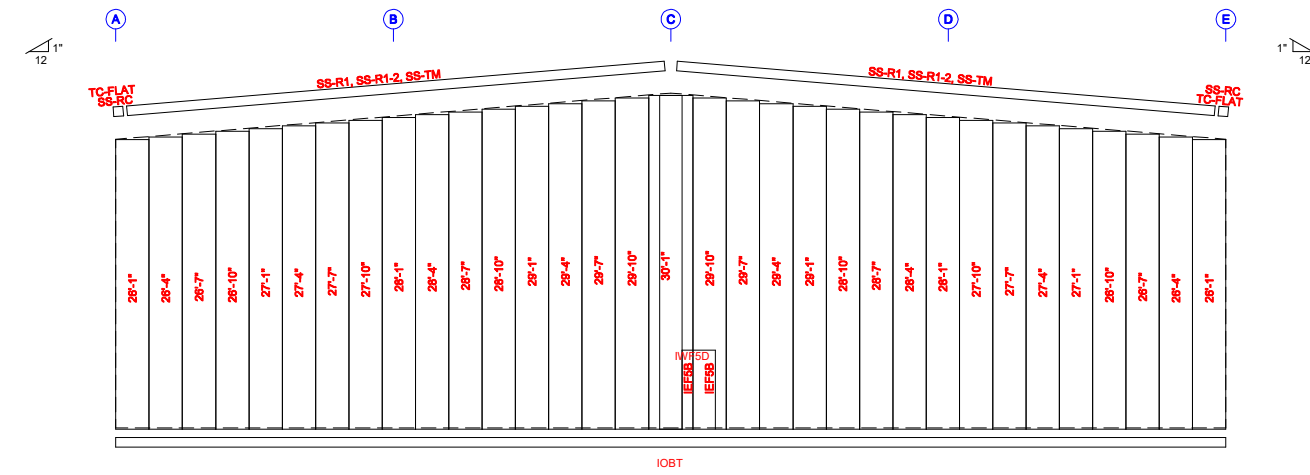
F.O. 104284AGAIN

DRAWING STATUS	
<input type="checkbox"/>	FOR APPROVAL: BEING FOR APPROVAL, ARE BY DESIGNATION NOT FINAL, AND ARE FOR CONCEPTUAL REPRESENTATION ONLY. THEIR PURPOSE IS TO CONFIRM PROPER INTERPRETATION OF THE DRAWING. THIS DRAWING IS NOT TO BE USED FOR CONSTRUCTION UNLESS INDICATED OTHERWISE.
<input type="checkbox"/>	FOR PERMIT: THESE DRAWINGS, BEING FOR PERMIT, ARE BY DEFINITION NOT FINAL. ONLY DRAWINGS ISSUED FOR CONSTRUCTION CAN BE CONSIDERED AS COMPLETE.
<input type="checkbox"/>	FOR CONSTRUCTION: FOR CONSTRUCTION, PER CONSTRUCTION, CAN BE CONSIDERED AS COMPLETE.

REVISION HISTORY	
REV.	DESCRIPTION



ENDWALL FRAMING: FRAME LINE 12



ENDWALL SHEETING & TRIM: FRAME LINE 12
PANELS: 26 Ga. R - TBD

GENERAL NOTES:

1. Use TEK5WW screws in place of SD150 panel screws at all 10 gage members.
2. See detail C7A for field coping of coldform endwall column flange braces.
3. All connections to door or window jambs where the clip is not designated in the clip table / drawing are made with JC# clips. (#= Girt Depth).

BOLT TABLE				
FRAME LINE 12				
LOCATION	QUAN	TYPE	DIA	LENGTH
EC-1/FRAME	10	A325	3/4"	1 3/4"
EC-2/FRAME	8	A325	3/4"	1 3/4"

CONNECTION PLATES			
FRAME LINE 12			
ID	QUAN	MARK/PART	
1	2	a1	
5	2	f1	
7	2	ECXF	
8	1	n2	

FLANGE BRACE TABLE		
FRAME LINE 12		
ID	MARK	LENGTH
1	FB1B	11 7/8"

TRIM COLORS	
EAVE TRIM = TBD	CORNER TRIM = TBD
BASE TRIM = TBD	GUTTER = TBD
DOOR TRIM = TBD	DOWNSPOUTS = TBD
RAKE TRIM = TBD	
* LINER TRIM = Liner panel color	
* SOFFIT TRIM = Soffit panel color	

* ONLY APPLICABLE IF LINER TRIM OR SOFFIT PANEL IS INDICATED ON BUILDING ORDER.

100'-0" x 275'-0" x 26'-0"
DATE: 8/ 8/22 REVISION: 0
ENG: DWN: APPD:

F.O. 104284AGAIN

REVISION HISTORY	
REV.	DESCRIPTION

DRAWING STATUS

FOR APPROVAL: THESE DRAWINGS, BEING FOR APPROVAL, ARE BY DEFINITION NOT FINAL, AND ARE FOR CONCEPTUAL REPRESENTATION ONLY. THEIR PURPOSE IS TO CONFIRM PROPER INTERPRETATION OF THE INFORMATION PROVIDED AND TO IDENTIFY ANY DISCREPANCIES THAT MAY OCCUR. FOR CONSTRUCTION, THESE DRAWINGS CAN BE CONSIDERED AS COMPLETE.

FOR PERMIT: THESE DRAWINGS, BEING FOR PERMIT, ARE BY DEFINITION NOT FINAL. ONLY DRAWINGS ISSUED FOR CONSTRUCTION CAN BE CONSIDERED AS COMPLETE.

FOR CONSTRUCTION: FOR CONSTRUCTION, THESE DRAWINGS CAN BE CONSIDERED AS COMPLETE.

