

HIDDEN RIDGE

TOWNSHIP OF UXBRIDGE REGIONAL MUNICIPALITY OF DURHAM

LANDSCAPE - LIST OF DRAWINGS

DRAWING	TITLE
LP-1	OVERALL LANDSCAPE PLAN - PHASE 2
LP-2	LANDSCAPE PLAN ENLARGEMENTS - PHASE 2
LP-3	LANDSCAPE PLAN ENLARGEMENTS - PHASE 2
LP-4	LANDSCAPE PLAN ENLARGEMENTS - PHASE 2
LP-5	LANDSCAPE PLAN ENLARGEMENTS - PHASE 2
LD-1	LANDSCAPE DETAILS - PHASE 2

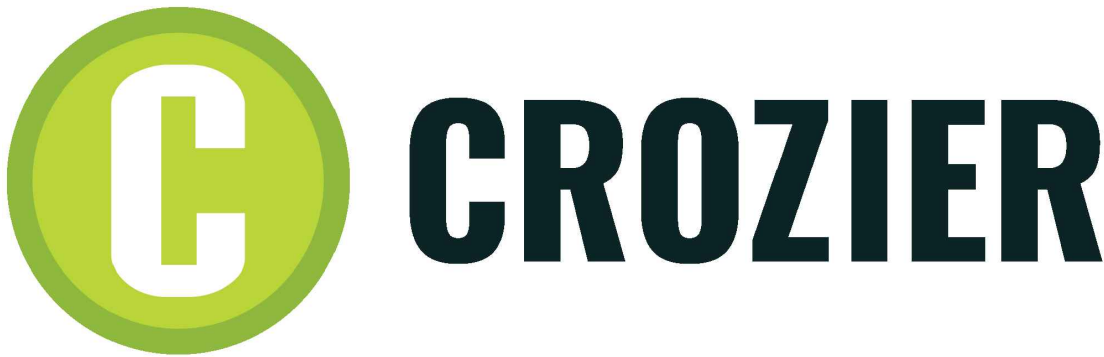
MUNICIPALITY

TOWNSHIP OF UXBRIDGE
309 ZEPHYR RD
PART OF LOT 24 & 25, CONCESSION 3
ZEPHYR, ONTARIO

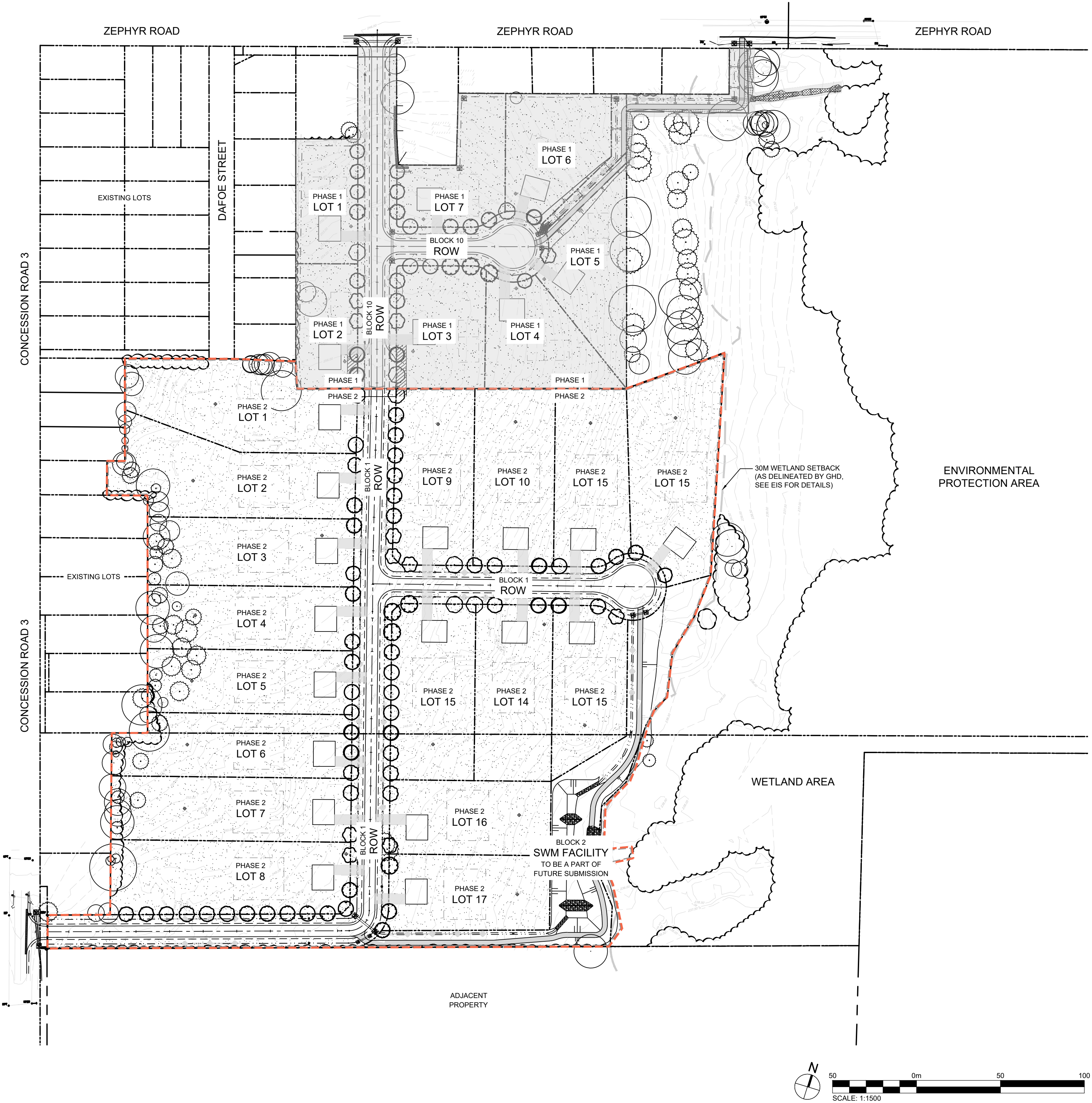
DEVELOPER

CHINA CANADA JING BEI XIN MIN INTL. CO. LTD.
2 BROOKGREENE CRES.
RICHMOND HILL, ONTARIO L4C 9W5

LANDSCAPE ARCHITECT



70 HURON STREET, SUITE 100
COLLINGWOOD, ON, L9Y 4L4
705-446-3510
WWW.CFCROZIER.CA



PROJECT No.: 2552-6856
1ST SUBMISSION

J:\2500\2552 - China Canada Jing Be Xin Min Int. Co. Ltd\6856 - Hidden Ridge Phase 1 Landscape\CAD\Landscape_LP.dwg, 2025-07-31 11:09:03 AM, DWG To PDF.pc3

GENERAL NOTES

- ANY AMBIGUITY IN THE DRAWINGS, SPECIFICATIONS OR DETAILS ARE TO BE REPORTED TO THE LANDSCAPE ARCHITECT FOR DIRECTION. THESE DRAWINGS SHALL NOT BE USED FOR CONSTRUCTION UNLESS STAMPED AND SIGNED BY THE LANDSCAPE ARCHITECT. THE CONTRACTOR IS NOT TO PROCEED IN UNCERTAINTY. THE LIMITS OF WORK ARE TO BE CLEARLY UNDERSTOOD BY THE CONTRACTOR PRIOR TO ANY WORK TAKING PLACE ON THE SITE.
- ALL DIMENSIONS ARE IN METERS UNLESS OTHERWISE NOTED. THE DRAWINGS MAY BE SCALED FOR APPROXIMATE LAYOUT. THE CONTRACTOR IS TO VERIFY ALL DIMENSIONS ON THE DRAWING(S) AND REPORT ANY DISCREPANCIES TO THE LANDSCAPE ARCHITECT.
- THE CONTRACTOR IS TO LOCATE AND MARK ALL INFRASTRUCTURE AND UTILITIES PRIOR TO ANY EXCAVATION WORK OR PLANTING ON THE SITE. DO NOT PLANT DIRECTLY ABOVE UNDERGROUND UTILITIES OR INFRASTRUCTURE UNLESS APPROVED BY THE LANDSCAPE ARCHITECT. DIG ALL HOLES BY HAND WHEN CLOSER THAN 1.0M TO ANY UNDERGROUND POWER, TELEPHONE OR GAS UTILITY. THE CONTRACTOR IS RESPONSIBLE FOR THE COORDINATION AND MAINTENANCE OF ALL UTILITY/INFRASTRUCTURE LOCATES FOR THE DURATION OF THE CONTRACT.
- THE CONTRACTOR SHALL SUPPLY ALL MATERIALS IN QUANTITIES SUFFICIENT TO COMPLETE WORK SHOWN ON THESE DRAWINGS. THE CONTRACTOR IS NOT TO SUBSTITUTE MATERIALS, PRODUCTS OR QUANTITIES WITHOUT PRIOR WRITTEN CONSENT OF THE LANDSCAPE ARCHITECT.
- THE CONTRACTOR IS TO TAKE ALL NECESSARY PRECAUTIONS TO PROTECT ALL EXISTING SITE FEATURES UNLESS SPECIFIED FOR REMOVAL/DEMOLITION. THIS INCLUDES ALL SURVEY BARS, STAKES, MONUMENTS AND SEDIMENT BARRIERS. THE CONTRACTOR IS RESPONSIBLE FOR ANY DAMAGES INCURRED DURING CONSTRUCTION AND MUST MAKE ALL NECESSARY RESTORATIONS AND REPAIRS TO ORIGINAL OR BETTER CONDITION.
- ALL EXISTING TREES, SHRUBS, AND HERBACEOUS PLANTS BEYOND THE LIMIT OF WORK ARE TO BE PROTECTED FROM CONSTRUCTION DAMAGE. THIS INCLUDES BUT IS NOT LIMITED TO: NOT STORING CONSTRUCTION MATERIALS OR FUEL WITHIN THE DRIPLENE OF AN EXISTING TREE, NOT ALTERING EXISTING GRADES OR COMPACTING SOIL AROUND PROTECTED VEGETATION AND TAKING CARE NOT TO DISTURB OR EXPOSE THE ROOTS OF ANY EXISTING TREES. THE CONTRACTOR IS RESPONSIBLE FOR ALL PROTECTION OR HOARDING MEASURES OF ALL EXISTING TREES AND VEGETATION TO BE PRESERVED WITHIN OR ADJACENT TO CONSTRUCTION WORK LIMITS.
- CONTRACTOR IS RESPONSIBLE FOR THE REMOVAL OF ALL DEBRIS, GARBAGE AND SURPLUS MATERIALS ON SITE RELATED TO THEIR CONTRACT OR WORK AND MUST KEEP THE SITE IN A CLEAN, SAFE, USEABLE CONDITION AT ALL TIMES OR AS DIRECTED BY THE CONTRACT ADMINISTRATOR.

PLANTING NOTES

- THE CONTRACTOR MUST NOTIFY THE LANDSCAPE ARCHITECT PRIOR TO THE COMMENCEMENT OF ANY PLANTING. THE CONTRACTOR SHALL SUPPLY ALL PLANTS AND MATERIALS IN QUANTITIES SUFFICIENT TO COMPLETE THE WORK SHOWN ON THIS DRAWING. ANY DISCREPANCIES BETWEEN QUANTITIES SHALL BE REPORTED TO THE LANDSCAPE ARCHITECT.
- ALL LANDSCAPE WORKS WILL BE WARRANTED **FOR A PERIOD OF TWENTY-FOUR (24) MONTHS** FOLLOWING INSPECTION AND WRITTEN NOTICE OF START OF WARRANTY PERIOD AS DETERMINED AND PROVIDED BY THE LANDSCAPE ARCHITECT. PLANT MATERIAL, WHICH IS NOT IN A HEALTHY, VIGOROUS GROWING CONDITION AT THE END OF THE WARRANTY PERIOD, SHALL BE REPLACED TO THE SATISFACTION OF THE LANDSCAPE ARCHITECT / OWNER.
- THE LANDSCAPE ARCHITECT RESERVES THE RIGHT TO EXTEND CONTRACTOR'S WARRANTY RESPONSIBILITIES FOR AN ADDITIONAL YEAR IF, AT THE END OF INITIAL WARRANTY PERIOD, LEAF DEVELOPMENT AND GROWTH IS NOT SUFFICIENT TO ENSURE FUTURE SURVIVAL AS DETERMINED BY THE LANDSCAPE ARCHITECT.
- THE CONTRACTOR IS TO IDENTIFY WITH LANDSCAPE ARCHITECT/OWNER ANY MAINTENANCE REQUIREMENTS NECESSARY FOR WARRANTY PURPOSES.
- PLANT MATERIALS SPECIFIED FOR THIS PROJECT WILL CONFORM TO THE CANADIAN NURSERY LANDSCAPE ASSOCIATION (C.N.L.A.) FOR SIZE, VARIETY AND CONDITION AS INDICATED ON THE PLANT SCHEDULE SHOWN ON THESE DRAWINGS. ANY PLANT MATERIALS WHICH DO NOT CONFORM WILL BE PROMPTLY REMOVED FROM THE SITE AND REPLACED BY THE CONTRACTOR AT NO ADDITIONAL COST TO THE PROJECT.
- THE LANDSCAPE ARCHITECT IS TO BE CONTACTED FOR INSPECTION AND WRITTEN APPROVAL PRIOR TO PLANT MATERIAL ARRIVING ON SITE. THE LANDSCAPE ARCHITECT RESERVES THE RIGHT TO REJECT ANY PLANT MATERIALS THAT HAVE NOT BEEN INSPECTED AND APPROVED.
- THE LANDSCAPE ARCHITECT RESERVES THE RIGHT TO REFUSE ACCEPTANCE OF ANY PLANT DISPLAYING POOR GROWTH HABITS, INJURY OR DISEASE. ANY PLANT MATERIAL THAT IS REJECTED BY THE LANDSCAPE ARCHITECT WILL BE PROMPTLY REMOVED FROM THE SITE AND REPLACED WITH MATERIAL OF ACCEPTABLE QUALITY AT NO ADDITIONAL CHARGE TO THE PROJECT.
- PLANT MATERIALS COLLECTED FROM WILD SOURCES WILL NOT BE ACCEPTED WITHOUT WRITTEN APPROVAL OF THE LANDSCAPE ARCHITECT. THE LANDSCAPE ARCHITECT RESERVES THE RIGHT TO REQUIRE THAT SUPPLIER INVOICES BE SUBMITTED FOR INSPECTION AND APPROVAL PRIOR TO ACCEPTANCE.
- ON-SITE LAYOUT OF THE PLANT MATERIALS TO BE APPROVED BY THE LANDSCAPE ARCHITECT PRIOR TO INSTALLATION. MINOR FIELD ADJUSTMENTS TO PLANT MATERIAL LOCATIONS MAY BE NECESSARY TO RESPOND TO THE LOCATIONS OF EXISTING PLANTS AND SITE CONDITIONS. THE CONTRACTOR TO REVIEW WITH LANDSCAPE ARCHITECT WHERE RELOCATIONS ARE NECESSARY. THE CONTRACTOR MUST RECEIVE APPROVAL FROM LANDSCAPE ARCHITECT PRIOR TO INSTALLATION.
- PLANTS ARE NOT TO BE INSTALLED DURING EXTREME HEAT, DROUGHT, OR OTHER UNDESIRABLE CONDITIONS. THOROUGHLY WATER ALL PLANTS IMMEDIATELY AFTER INSTALLATION. THE CONTRACTOR SHALL REGULARLY MONITOR SITE CONDITIONS AND WATER AS REQUIRED TO ENSURE HEALTHY GROWTH CONDITIONS THROUGHOUT THE DURATION OF THE WARRANTY PERIOD.
- DO NOT PLANT DIRECTLY IN CENTERLINE OF DRAINAGE SWALES OR DEPRESSION AREAS. WHERE PROPOSED PLANTING LOCATIONS CONFLICT WITH CONSTRUCTED SWALES OR LOW-LYING WET AREAS, CONTACT LANDSCAPE ARCHITECT FOR DIRECTION.
- ALL PLANTS ARE TO BE PLANTED IN ACCORDANCE WITH THE PLANTING DETAILS SHOWN ON THIS DRAWING. ALL PLANTS ARE TO BE INSTALLED VERTICAL AND PLUMB, REGARDLESS OF GROUND SLOPE.
- TOPSOIL: EACH SOURCE OF TOPSOIL, IMPORTED OR NATIVE TO BE APPROVED BY LANDSCAPE ARCHITECT PRIOR TO USE. SUBMIT TOPSOIL ANALYSIS/TEST RESULTS TO LANDSCAPE ARCHITECT PRIOR TO ORDER OR DELIVERY TO SITE. TESTING TO BE IN ACCORDANCE WITH CONTRACT SPECIFICATIONS. SUPPLY AND PLACE TOPSOIL IN ACCORDANCE WITH OPSS 802 TO A MINIMUM DEPTH OF **150MM IN SEED/SOD AREAS, 600MM DEPTH IN PERENNIAL/ SHRUB PLANTING BEDS, AND 1000MM DEPTH WHERE TREES ARE SUPPORTED**, UNLESS OTHERWISE SPECIFIED.
- SHREDDED CEDAR BARK MULCH:** TO BE SPREAD UNIFORMLY AROUND THE BASE OF TREES AND SHRUBS TO A MINIMUM DEPTH OF **100 MM**. DO NOT PLACE MULCH IN DIRECT CONTACT WITH TRUNK OR STEM(S). ALLOW A **100 MM** MULCH FREE ZONE AT TRUNK/STEMS. SHRUBS TO BE IN CONTINUOUSLY MULCHED PLANTING BEDS UNLESS OTHERWISE SPECIFIED.
- SUPPLY AND PLACE SEED IN ACCORDANCE WITH OPSS 804 UNLESS OTHERWISE SPECIFIED. ALL 5:1 OR GREATER SLOPES TO BE SEEDED WITH TACKIFIER. ALL SLOPES GREATER THAN 3:1 SHALL BE MATTED WITH AN EROSION CONTROL BLANKET. SUPPLY AND PLACE SOD IN ACCORDANCE WITH OPSS 803 UNLESS OTHERWISE SPECIFIED.
- THE CONTRACTOR IS TO REMOVE DEAD OR DAMAGED BRANCHES ON TREES OR SHRUBS. ALL PRUNING SHALL BE PERFORMED IN ACCORDANCE WITH STANDARD HORTICULTURAL PRACTICES AND APPROPRIATE TIMING FOR EACH SPECIES.
- ALL STAKES AND ASSOCIATED TIES ARE TO BE REMOVED AFTER THE FIRST FULL GROWING SEASON. RODENT GUARDS ARE TO BE REMOVED AT THE CONCLUSION OF THE WARRANTY PERIOD. GATORBAGS ARE TO BE REMOVED FOR WINTER MONTHS.

SOD NOTES

- ANY LAWN AREAS DISTURBED BY CONSTRUCTION SHALL BE RE-SODDED AND REPAIRED TO ORIGINAL CONDITION OR BETTER.
- SOD AND SODDING OPERATIONS TO BE IN ACCORDANCE WITH OPSS 803, EXCEPT AS NOTED BELOW.
- SOD TO BE DELIVERED TO PROJECT WITHIN 24 HOURS OF BEING HARVESTED AND LAID WITHIN 36 HOURS THEREAFTER.
- ROUGH GRADED AND COMPACTED SOIL SHALL BE SCARIFIED TO A MINIMUM DEPTH OF 100 MM FREE OF ALL STONES, ROOTS, BRANCHES, LARGER THAN 25 MM DIAMETER. TOPSOIL TO BE SPREAD AT A MINIMUM DEPTH OF 150 MM COMPACTED TO 85% S.P.D.
- PLACE SOD ON PREPARED TOPSOIL WITH STAGGERED JOINTS AND BUTT TIGHTLY. IRRIGATE IMMEDIATELY TO ENSURE MOISTURE PENETRATION INTO THE UPPER 100 MM (4") OF SOIL. MACHINE ROLL TO ENSURE CONTACT WITH TOPSOIL. REPAIR MINOR GRADE DEFICIENCIES AND IRREGULARITIES.
- WATER SOD IMMEDIATELY AFTER LAYING TO OBTAIN MOISTURE PENETRATION TO A MINIMUM OF 100 MM DEPTH WITHIN TOPSOIL. MAINTAIN SOD PER OPSS 803. SOD MUST BE CUT A MINIMUM OF TWO TIMES FOR FINAL ACCEPTANCE AT THE DISCRETION OF THE LANDSCAPE ARCHITECT.

NOTES:

- TOPOGRAPHIC SURVEY PROVIDED BY RICHMOND SURVEYING INC. FOR PHASE 1 (COMPLETED ON 2024.03.28).
- TOPOGRAPHIC SURVEY PROVIDED BY ECOVIEW CONSULTING SERVICES INC. FOR PHASE 2 (COMPLETED ON 2017.04.18)
- BASE INFORMATION PROVIDED BY TATHAM ENGINEERING LTD. (COMPLETED IN 2025.05).
- ALL DIMENSIONS ARE IN METERS UNLESS OTHERWISE NOTED.
- CONTRACTOR IS RESPONSIBLE FOR LOCATING ALL UTILITIES BEFORE CONSTRUCTION BEGINS.
- REFER TO LANDSCAPE DETAIL SHEETS FOR TREE OFFSET CHART.

No.	ISSUE	DATE: YYYY/MM/DD
0	ISSUED FOR FIRST SUBMISSION - APPROVAL	2025/07/31

LANDSCAPE ARCHITECT



Project

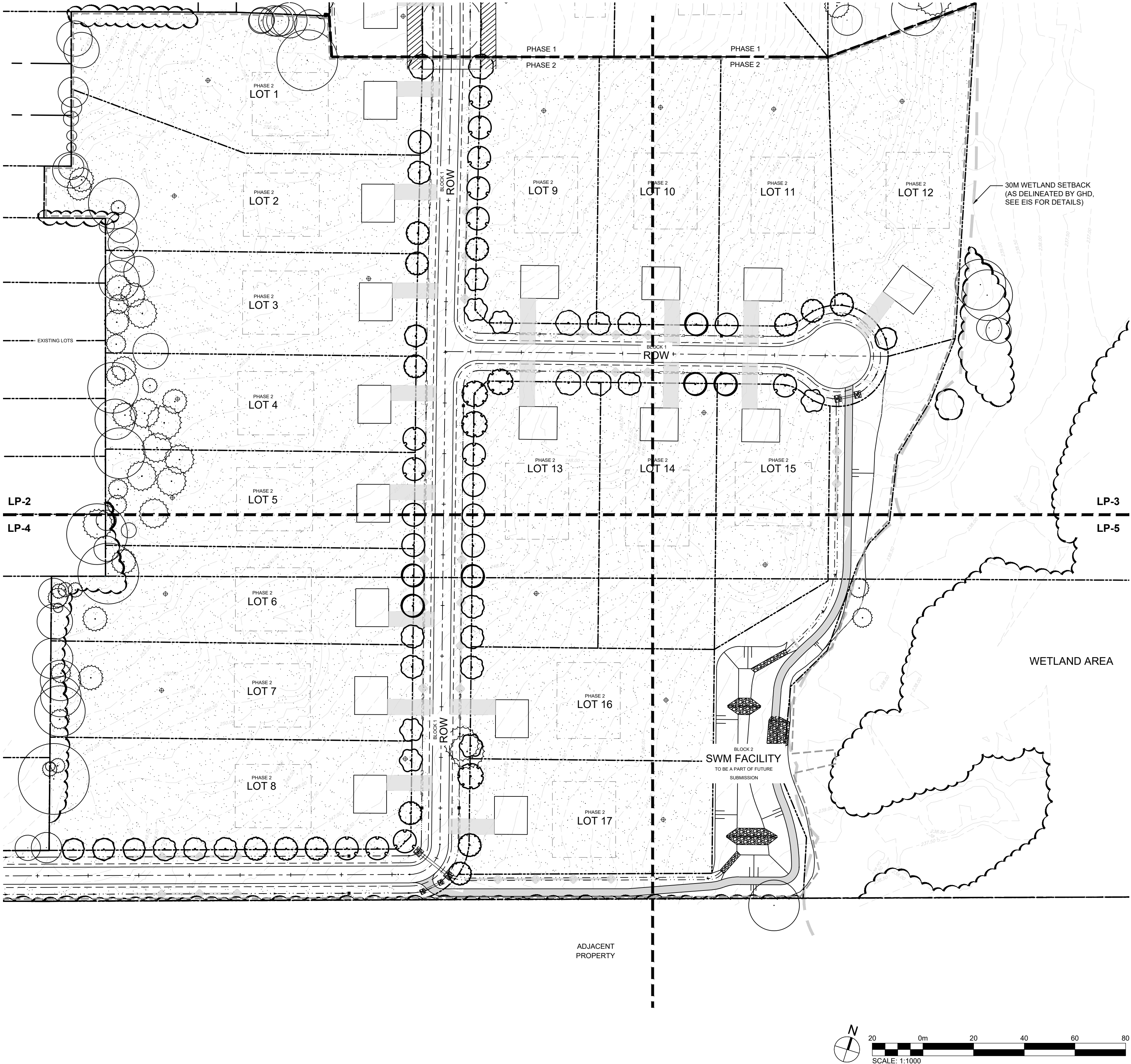
HIDDEN RIDGE TOWNSHIP OF UXBRIDGE

Drawing

OVERALL LANDSCAPE PLAN - PHASE 2

Drawn By M.M. Design By M.M./S.K. Project 2552-6856

Check By S.K. Check By Drawing LP-1



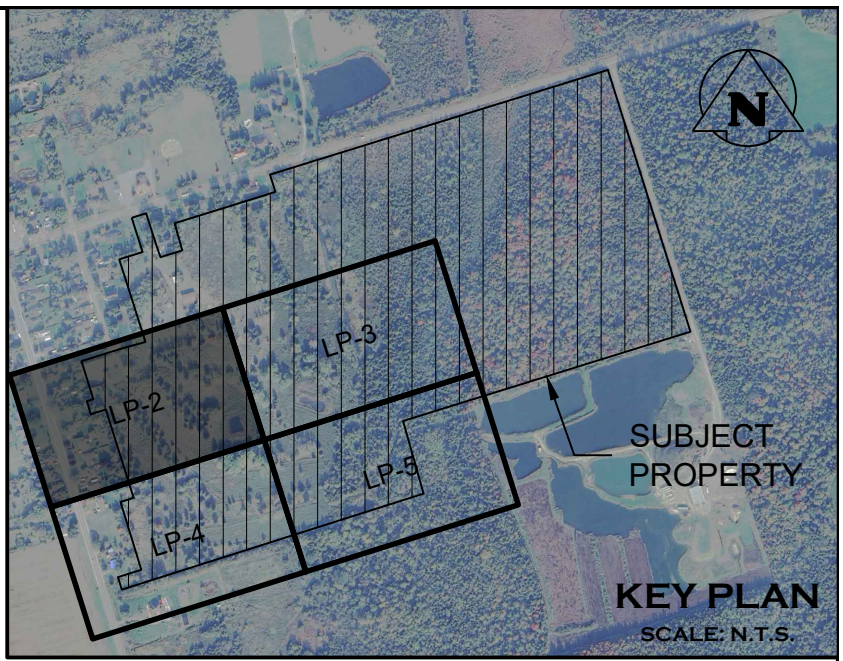
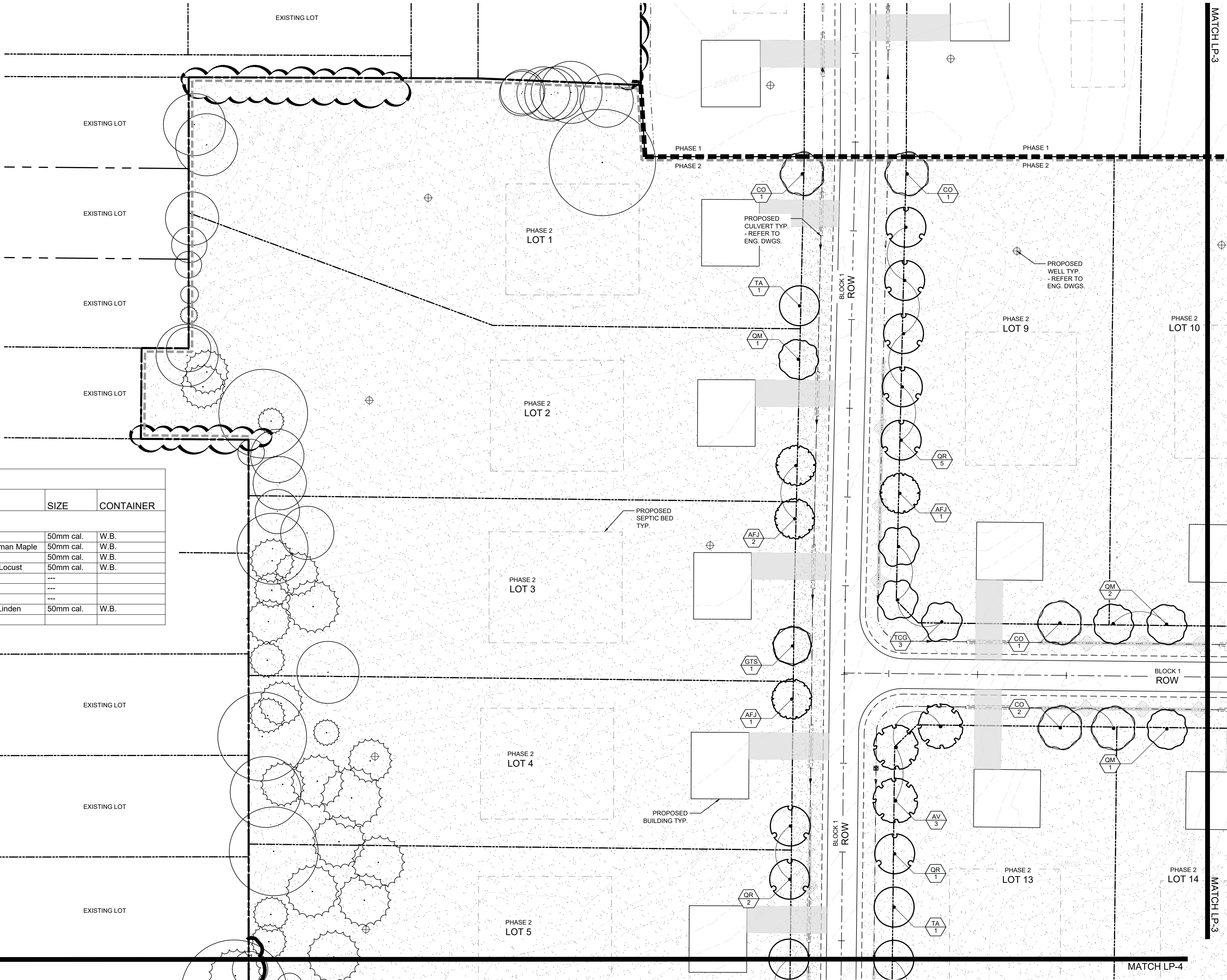
NOTES:

- FOR GENERAL PLANTING NOTES, REFER TO NOTES ON DRAWING LD-1.
- TREE PITS OR PLANTING BEDS WITHIN 1.0m OF UNDERGROUND UTILITIES ARE TO BE HAND DUG.
- MINIMUM CLEARANCES FOR TREES ARE AS FOLLOWS:

MINIMUM TREE CLEARANCES	
FIRE HYDRANTS	3.0m
DRIVEWAYS	2.0m
HYDRO TRANSFORMERS	3.0m
BELL OR CABLE PEDESTALS	1.0m
STREETLIGHT POLES	5.0m
UNDERGROUND SERVICES	1.0m
SEPTIC SYSTEMS	6.0m
WELLS	6.0m

PLANT SCHEDULE LP-2

CODE	QTY	BOTANICAL NAME	COMMON NAME	SIZE	CONTAINER
DECIDUOUS TREES					
AV	3	Acer saccharinum	Silver Maple	50mm cal.	W.B.
AFJ	4	Acer x freemanii 'Jeffersred'	Autumn Blaze® Freeman Maple	50mm cal.	W.B.
CO	5	Celtis occidentalis	Common Hackberry	50mm cal.	W.B.
GTS	1	Gleditsia triacanthos var. inermis 'Shademaster'	Shademaster Honey Locust	50mm cal.	W.B.
QM	4	Quercus macrocarpa	Burr Oak	---	
QR	8	Quercus rubra	Red Oak	---	
TA	2	Tilia americana	Basswood	---	
TCG	3	Tilia cordata 'Greenspire'	Greenspire Littleleaf Linden	50mm cal.	W.B.
	30	SUBTOTAL:			



LEGEND	
	LIMIT OF PHASE
	LIMIT OF WORK
	PROPERTY BOUNDARY
	LOT BOUNDARY
	UNDERGROUND SERVICES
	SWALE OR DITCH
	EDGE OF VEGETATION TO BE RETAINED AND PROTECTED
	EXISTING DECIDUOUS TREE TO BE RETAINED OR PROTECTED
	EXISTING CONIFEROUS TREE TO BE RETAINED OR PROTECTED
	DECIDUOUS TREE
	SPECIES QUANTITY
	TOPSOIL & SOD
	TOPSOIL & NATIVE SEED MIX
	TOPSOIL & WET MEADOW SEED MIX
	RIP RAP



- THIS DRAWING IS THE EXCLUSIVE PROPERTY OF C.F. CROZIER & ASSOCIATES INC. AND THE MODIFICATION AND/OR REPRODUCTION OF ANY PART OF THIS DRAWING IS STRICTLY PROHIBITED WITHOUT WRITTEN AUTHORIZATION FROM THIS OFFICE.
 - THE DIGITAL FILES CONTAIN INTELLECTUAL AND DIGITAL DATA PROPERTY THAT IS THE EXCLUSIVE PROPERTY OF C.F. CROZIER & ASSOCIATES INC.
 - THE CONTRACTOR SHALL VERIFY ALL DIMENSIONS, LEVELS AND DATUMS ON SITE AND REPORT ANY DISCREPANCIES OR OMISSIONS TO C.F. CROZIER & ASSOCIATES INC. PRIOR TO CONSTRUCTION.
 - THIS DRAWING IS TO BE READ AND UNDERSTOOD IN CONJUNCTION WITH ALL OTHER PLANS AND DOCUMENTS APPLICABLE TO THIS PROJECT.
 - ALL EXISTING UNDERGROUND UTILITIES TO BE VERIFIED IN THE FIELD BY THE CONTRACTOR PRIOR TO CONSTRUCTION.
 - DO NOT SCALE DRAWINGS.
- NOTES:
- TOPOGRAPHIC SURVEY PROVIDED BY RICHMOND SURVEYING INC. FOR PHASE 1 (COMPLETED ON 2024.03.28).
 - TOPOGRAPHIC SURVEY PROVIDED BY ECOVIEW CONSULTING SERVICES INC. FOR PHASE 2 (COMPLETED ON 2017.04.18)
 - BASE INFORMATION PROVIDED BY TATHAM ENGINEERING LTD. (COMPLETED IN 2025.05).
 - ALL DIMENSIONS ARE IN METERS UNLESS OTHERWISE NOTED.
 - CONTRACTOR IS RESPONSIBLE FOR LOCATING ALL UTILITIES BEFORE CONSTRUCTION BEGINS.
 - REFER TO LANDSCAPE DETAIL SHEETS FOR TREE OFFSET CHART.

Town

No.	ISSUE	DATE: YYYY/MM/DD
0	ISSUED FOR FIRST SUBMISSION - APPROVAL	2025/07/31

LANDSCAPE ARCHITECT



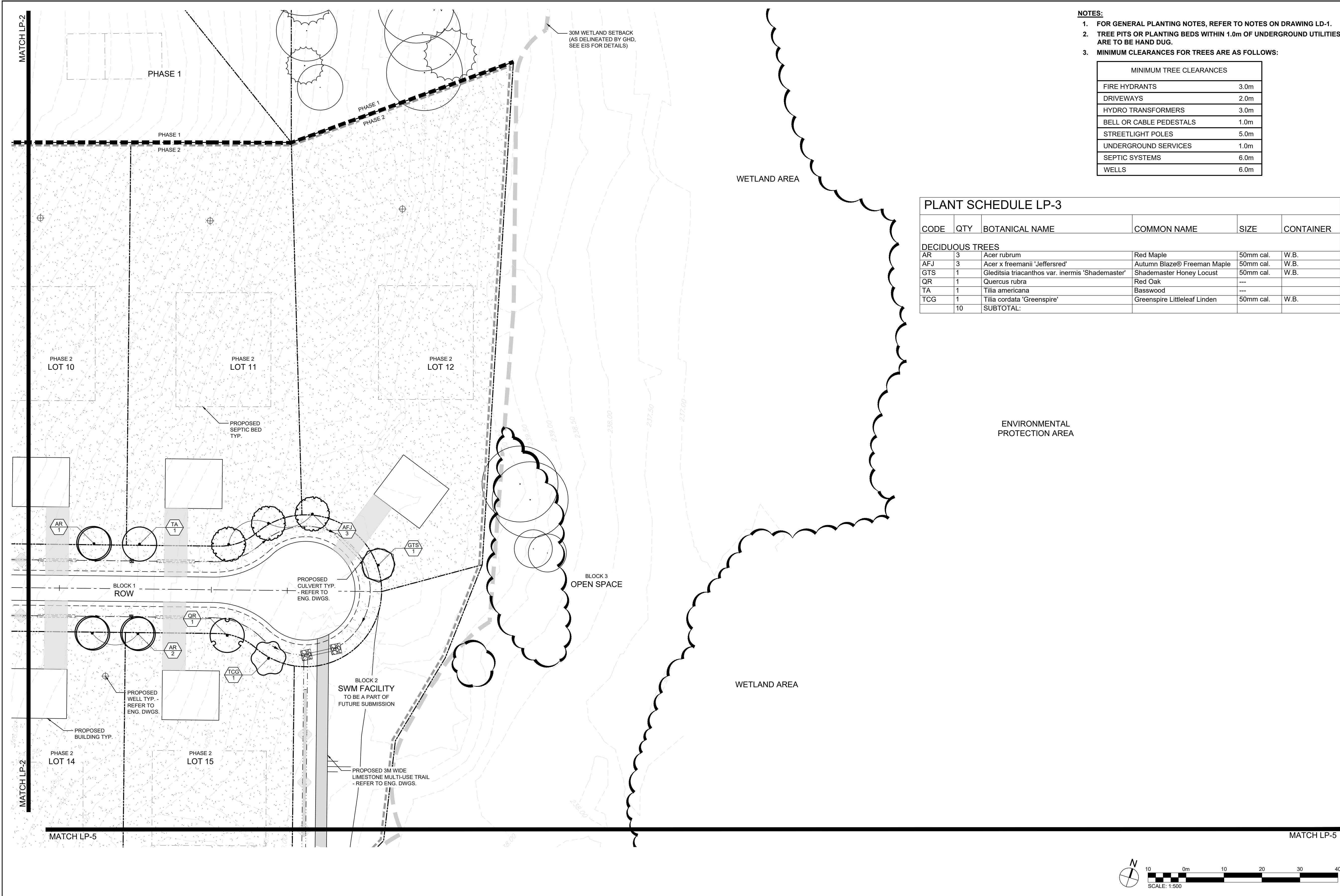
HIDDEN RIDGE TOWNSHIP OF UXBRIDGE

LANDSCAPE PLAN ENLARGEMENTS - PHASE 2



Drawn By	M.M.	Design By	M.M./S.K.	Project	2552-6856
Check By	S.K.	Check By		Drawing	LP-2

J:\2500\2552 - China Canada Jing Bei Xin Min Int. Co. Ltd\6856 - Hidden Ridge Phase 1 Landscape\CAD\LA6856_LP.dwg, 2025-07-31 11:09:29 AM, DWG To PDF.pc3



- NOTES:**
1. FOR GENERAL PLANTING NOTES, REFER TO NOTES ON DRAWING LD-1.
 2. TREE PITS OR PLANTING BEDS WITHIN 1.0m OF UNDERGROUND UTILITIES ARE TO BE HAND DUG.
 3. MINIMUM CLEARANCES FOR TREES ARE AS FOLLOWS:

MINIMUM TREE CLEARANCES	
FIRE HYDRANTS	3.0m
DRIVEWAYS	2.0m
HYDRO TRANSFORMERS	3.0m
BELL OR CABLE PEDESTALS	1.0m
STREETLIGHT POLES	5.0m
UNDERGROUND SERVICES	1.0m
SEPTIC SYSTEMS	6.0m
WELLS	6.0m

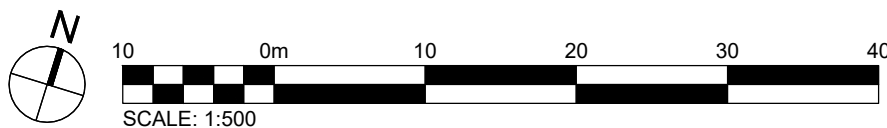
PLANT SCHEDULE LP-3

CODE	QTY	BOTANICAL NAME	COMMON NAME	SIZE	CONTAINER
DECIDUOUS TREES					
AR	3	Acer rubrum	Red Maple	50mm cal.	W.B.
AFJ	3	Acer x freemanii 'Jeffersred'	Autumn Blaze® Freeman Maple	50mm cal.	W.B.
GTS	1	Gleditsia triacanthos var. inermis 'Shademaster'	Shademaster Honey Locust	50mm cal.	W.B.
QR	1	Quercus rubra	Red Oak	---	
TA	1	Tilia americana	Basswood	---	
TCG	1	Tilia cordata 'Greenspire'	Greenspire Littleleaf Linden	50mm cal.	W.B.
	10	SUBTOTAL:			



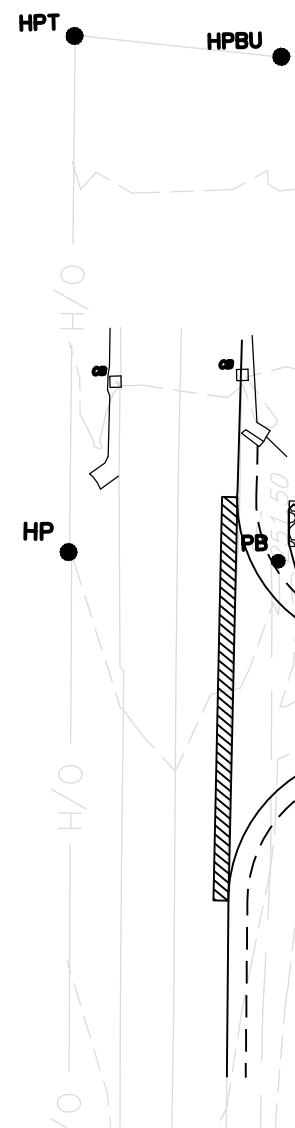
LEGEND

- LIMIT OF PHASE
- - - - - LIMIT OF WORK
- - - - - PROPERTY BOUNDARY
- - - - - LOT BOUNDARY
- - - - - UNDERGROUND SERVICES
- - - - - SWALE OR DITCH
- ~ ~ ~ EDGE OF VEGETATION TO BE RETAINED AND PROTECTED
- EXISTING DECIDUOUS TREE TO BE RETAINED OR PROTECTED
- ⊙ EXISTING CONIFEROUS TREE TO BE RETAINED OR PROTECTED
- ⊙ DECIDUOUS TREE
- SP QTY SPECIES PLANT REFERENCE
- QUANTITY
- TOPSOIL & SOD
- TOPSOIL & NATIVE SEED MIX
- TOPSOIL & WET MEADOW SEED MIX
- RIP RAP



<p>1. THIS DRAWING IS THE EXCLUSIVE PROPERTY OF C.F. CROZIER & ASSOCIATES INC. AND THE MODIFICATION AND/OR REPRODUCTION OF ANY PART OF THIS DRAWING IS STRICTLY PROHIBITED WITHOUT WRITTEN AUTHORIZATION FROM THIS OFFICE.</p> <p>2. THE DIGITAL FILES CONTAIN INTELLECTUAL AND DIGITAL DATA PROPERTY THAT IS THE EXCLUSIVE PROPERTY OF C.F. CROZIER & ASSOCIATES INC.</p> <p>3. THE CONTRACTOR SHALL VERIFY ALL DIMENSIONS, LEVELS, AND DATUMS ON SITE AND REPORT ANY DISCREPANCIES OR OMISSIONS TO C.F. CROZIER & ASSOCIATES INC. PRIOR TO CONSTRUCTION.</p> <p>4. THIS DRAWING IS TO BE READ AND UNDERSTOOD IN CONJUNCTION WITH ALL OTHER PLANS AND DOCUMENTS APPLICABLE TO THIS PROJECT.</p> <p>5. ALL EXISTING UNDERGROUND UTILITIES TO BE VERIFIED IN THE FIELD BY THE CONTRACTOR PRIOR TO CONSTRUCTION.</p> <p>6. DO NOT SCALE DRAWINGS.</p>	<p>NOTES:</p> <p>1. TOPOGRAPHIC SURVEY PROVIDED BY RICHMOND SURVEYING INC. FOR PHASE 1 (COMPLETED ON 2024.03.28).</p> <p>2. TOPOGRAPHIC SURVEY PROVIDED BY ECOVIEW CONSULTING SERVICES INC. FOR PHASE 2 (COMPLETED ON 2017.04.18).</p> <p>3. BASE INFORMATION PROVIDED BY TATHAM ENGINEERING LTD. (COMPLETED IN 2025.05).</p> <p>4. ALL DIMENSIONS ARE IN METERS UNLESS OTHERWISE NOTED.</p> <p>5. CONTRACTOR IS RESPONSIBLE FOR LOCATING ALL UTILITIES BEFORE CONSTRUCTION BEGINS.</p> <p>6. REFER TO LANDSCAPE DETAIL SHEETS FOR TREE OFFSET CHART.</p>	Town	<table><tr><th>No.</th><th>ISSUE</th><th>DATE: YYYY/MM/DD</th></tr><tr><td>0</td><td>ISSUED FOR FIRST SUBMISSION - APPROVAL</td><td>2025/07/31</td></tr><tr><td> </td><td> </td><td> </td></tr><tr><td> </td><td> </td><td> </td></tr><tr><td> </td><td> </td><td> </td></tr><tr><td> </td><td> </td><td> </td></tr><tr><td> </td><td> </td><td> </td></tr><tr><td> </td><td> </td><td> </td></tr></table>	No.	ISSUE	DATE: YYYY/MM/DD	0	ISSUED FOR FIRST SUBMISSION - APPROVAL	2025/07/31																			<p>LANDSCAPE ARCHITECT</p>	Project	HIDDEN RIDGE TOWNSHIP OF UXBRIDGE
No.	ISSUE	DATE: YYYY/MM/DD																												
0	ISSUED FOR FIRST SUBMISSION - APPROVAL	2025/07/31																												
Drawing	LANDSCAPE PLAN ENLARGEMENTS - PHASE 2	Drawn By M.M. Design By M.M./S.K. Project 2552-6856	Check By S.K. Check By Drawing LP-3																											

J:\2500\2552 - China Canada Jing Bei Xin Min Inti. Co. Ltd\6856 - Hidden Ridge Phase 1 Landscape\CAD\LA\6856_LP.dwg, 2025-07-31 11:09:41 AM, DWG To PDF.pc3



LEGEND

- LIMIT OF PHASE
- LIMIT OF WORK
- PROPERTY BOUNDARY
- LOT BOUNDARY
- UNDERGROUND SERVICES
- SWALE OR DITCH
- EDGE OF VEGETATION TO BE RETAINED AND PROTECTED
- EXISTING DECIDUOUS TREE TO BE RETAINED OR PROTECTED
- EXISTING CONIFEROUS TREE TO BE RETAINED OR PROTECTED
- DECIDUOUS TREE
- SP QTY SPECIES PLANT REFERENCE
- TOPSOIL & SOD
- TOPSOIL & NATIVE SEED MIX
- TOPSOIL & WET MEADOW SEED MIX
- RIP RAP



PLANT SCHEDULE LP-4

CODE	QTY	BOTANICAL NAME	COMMON NAME	SIZE	CONTAINER
DECIDUOUS TREES					
AR	3	Acer rubrum	Red Maple	50mm cal.	W.B.
AV	1	Acer saccharinum	Silver Maple	50mm cal.	W.B.
AFJ	6	Acer x freemanii 'Jeffersred'	Autumn Blaze® Freeman Maple	50mm cal.	W.B.
GTS	3	Gleditsia triacanthos var. inermis 'Shademaster'	Shademaster Honey Locust	50mm cal.	W.B.
QM	8	Quercus macrocarpa	Burr Oak	---	---
QR	3	Quercus rubra	Red Oak	---	---
TA	4	Tilia americana	Basswood	---	---
TCG	3	Tilia cordata 'Greenspire'	Greenspire Littleleaf Linden	50mm cal.	W.B.
SUBTOTAL:					

NOTES:

- FOR GENERAL PLANTING NOTES, REFER TO NOTES ON DRAWING LD-1.
- TREE PITS OR PLANTING BEDS WITHIN 1.0m OF UNDERGROUND UTILITIES ARE TO BE HAND DUG.
- MINIMUM CLEARANCES FOR TREES ARE AS FOLLOWS:

MINIMUM TREE CLEARANCES	
FIRE HYDRANTS	3.0m
DRIVEWAYS	2.0m
HYDRO TRANSFORMERS	3.0m
BELL OR CABLE PEDESTALS	1.0m
STREETLIGHT POLES	5.0m
UNDERGROUND SERVICES	1.0m
SEPTIC SYSTEMS	6.0m
WELLS	6.0m

- THIS DRAWING IS THE EXCLUSIVE PROPERTY OF C.F. CROZIER & ASSOCIATES INC. AND THE MODIFICATION AND/OR REPRODUCTION OF ANY PART OF THIS DRAWING IS STRICTLY PROHIBITED WITHOUT WRITTEN AUTHORIZATION FROM THIS OFFICE.
- THE DIGITAL FILES CONTAIN INTELLECTUAL AND DIGITAL DATA PROPERTY THAT IS THE EXCLUSIVE PROPERTY OF C.F. CROZIER & ASSOCIATES INC.
- THE CONTRACTOR SHALL VERIFY ALL DIMENSIONS, LEVELS, AND DATUMS ON SITE AND REPORT ANY DISCREPANCIES OR OMISSIONS TO C.F. CROZIER & ASSOCIATES INC. PRIOR TO CONSTRUCTION.
- THIS DRAWING IS TO BE READ AND UNDERSTOOD IN CONJUNCTION WITH ALL OTHER PLANS AND DOCUMENTS APPLICABLE TO THIS PROJECT.
- ALL EXISTING UNDERGROUND UTILITIES TO BE VERIFIED IN THE FIELD BY THE CONTRACTOR PRIOR TO CONSTRUCTION.
- DO NOT SCALE DRAWINGS.

- NOTES:**
- TOPOGRAPHIC SURVEY PROVIDED BY RICHMOND SURVEYING INC. FOR PHASE 1 (COMPLETED ON 2024.03.28).
 - TOPOGRAPHIC SURVEY PROVIDED BY ECOVIEW CONSULTING SERVICES INC. FOR PHASE 2 (COMPLETED ON 2017.04.18).
 - BASE INFORMATION PROVIDED BY TATHAM ENGINEERING LTD. (COMPLETED IN 2025.05).
 - ALL DIMENSIONS ARE IN METERS UNLESS OTHERWISE NOTED.
 - CONTRACTOR IS RESPONSIBLE FOR LOCATING ALL UTILITIES BEFORE CONSTRUCTION BEGINS.
 - REFER TO LANDSCAPE DETAIL SHEETS FOR TREE OFFSET CHART.

Town

No.	ISSUE	DATE: YYYY/MM/DD
0	ISSUED FOR FIRST SUBMISSION - APPROVAL	2025/07/31

LANDSCAPE ARCHITECT



Project

HIDDEN RIDGE TOWNSHIP OF UXBRIDGE

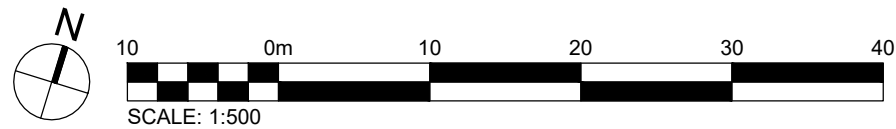
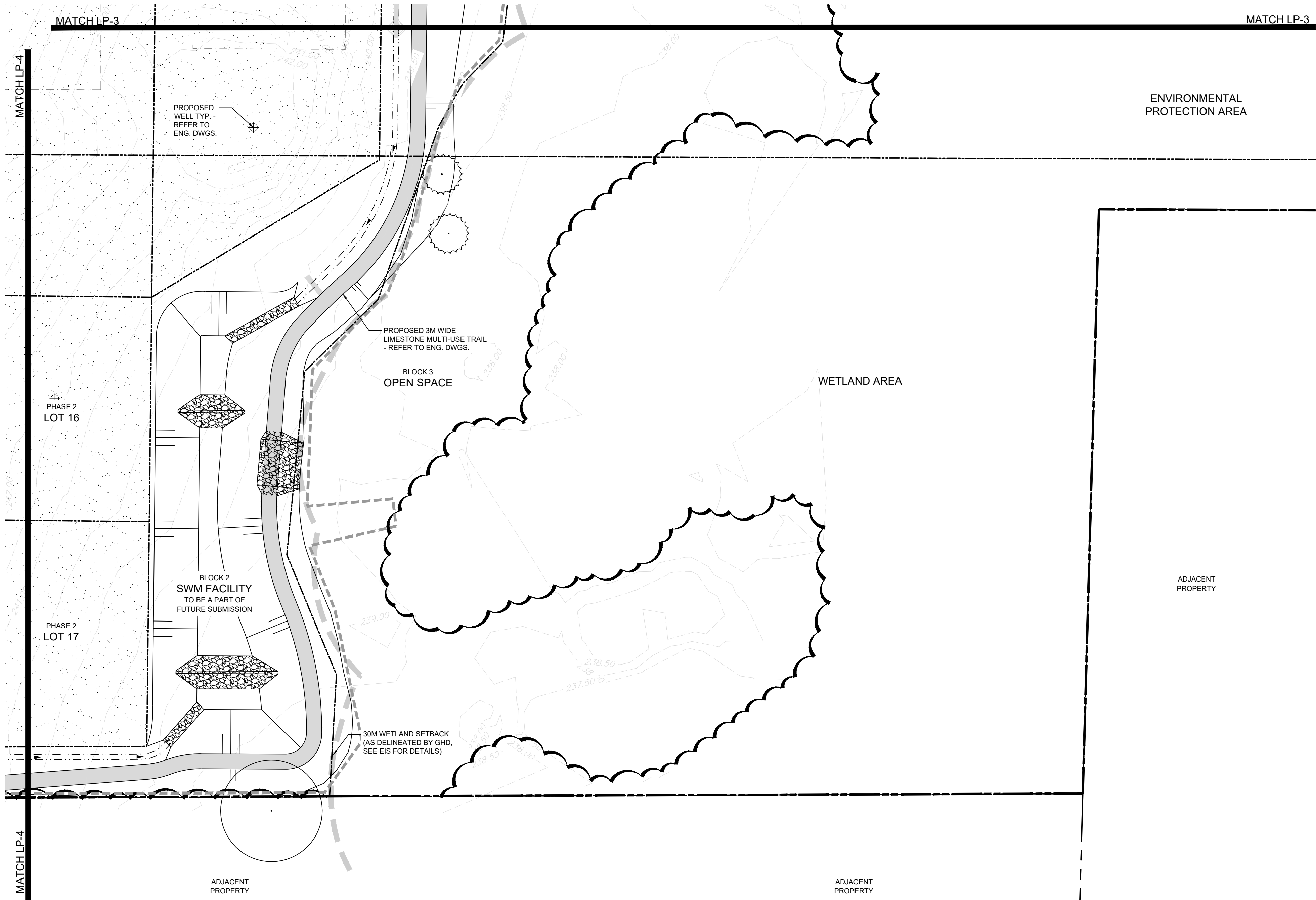
Drawing

LANDSCAPE PLAN ENLARGEMENTS - PHASE 2



Drawn By	M.M.	Design By	M.M./S.K.	Project	2552-6856
Check By	S.K.	Check By		Drawing	LP-4

J:\2500\2552 - China Canada Jing Bei Xin Min Intl. Co. Ltd\6856 - Hidden Ridge Phase 1 Landscape\CAD\LA6856_LP.dwg, 2025-07-31 11:09:53 AM, DWG To PDF.pc3



LEGEND	
	LIMIT OF PHASE
	LIMIT OF WORK
	PROPERTY BOUNDARY
	LOT BOUNDARY
	UNDERGROUND SERVICES
	SWALE OR DITCH
	EDGE OF VEGETATION TO BE RETAINED AND PROTECTED
	EXISTING DECIDUOUS TREE TO BE RETAINED OR PROTECTED
	EXISTING CONIFEROUS TREE TO BE RETAINED OR PROTECTED
	DECIDUOUS TREE
	SPECIES QUANTITY
	TOPSOIL & SOD
	TOPSOIL & NATIVE SEED MIX
	TOPSOIL & WET MEADOW SEED MIX
	RIP RAP

- NOTES:**
- FOR GENERAL PLANTING NOTES, REFER TO NOTES ON DRAWING LD-1.
 - TREE PITS OR PLANTING BEDS WITHIN 1.0m OF UNDERGROUND UTILITIES ARE TO BE HAND DUG.
 - MINIMUM CLEARANCES FOR TREES ARE AS FOLLOWS:

MINIMUM TREE CLEARANCES	
FIRE HYDRANTS	3.0m
DRIVEWAYS	2.0m
HYDRO TRANSFORMERS	3.0m
BELL OR CABLE PEDESTALS	1.0m
STREETLIGHT POLES	5.0m
UNDERGROUND SERVICES	1.0m
SEPTIC SYSTEMS	6.0m
WELLS	6.0m

1. THIS DRAWING IS THE EXCLUSIVE PROPERTY OF C.F. CROZIER & ASSOCIATES INC. AND THE MODIFICATION AND/OR REPRODUCTION OF ANY PART OF THIS DRAWING IS STRICTLY PROHIBITED WITHOUT WRITTEN AUTHORIZATION FROM THIS OFFICE.
2. THE DIGITAL FILES CONTAIN INTELLECTUAL AND DIGITAL DATA PROPERTY THAT IS THE EXCLUSIVE PROPERTY OF C.F. CROZIER & ASSOCIATES INC.
3. THE CONTRACTOR SHALL VERIFY ALL DIMENSIONS, LEVELS, AND DATUMS ON SITE AND REPORT ANY DISCREPANCIES OR OMISSIONS TO C.F. CROZIER & ASSOCIATES INC. PRIOR TO CONSTRUCTION.
4. THIS DRAWING IS TO BE READ AND UNDERSTOOD IN CONJUNCTION WITH ALL OTHER PLANS AND DOCUMENTS APPLICABLE TO THIS PROJECT.
5. ALL EXISTING UNDERGROUND UTILITIES TO BE VERIFIED IN THE FIELD BY THE CONTRACTOR PRIOR TO CONSTRUCTION.
6. DO NOT SCALE DRAWINGS.
- NOTES:**
- TOPOGRAPHIC SURVEY PROVIDED BY RICHMOND SURVEYING INC. FOR PHASE 1 (COMPLETED ON 2024.03.28).
 - TOPOGRAPHIC SURVEY PROVIDED BY ECOVIEW CONSULTING SERVICES INC. FOR PHASE 2 (COMPLETED ON 2017.04.18).
 - BASE INFORMATION PROVIDED BY TATHAM ENGINEERING LTD. (COMPLETED IN 2025.05).
 - ALL DIMENSIONS ARE IN METERS UNLESS OTHERWISE NOTED.
 - CONTRACTOR IS RESPONSIBLE FOR LOCATING ALL UTILITIES BEFORE CONSTRUCTION BEGINS.
 - REFER TO LANDSCAPE DETAIL SHEETS FOR TREE OFFSET CHART.

Town

No.	ISSUE	DATE: YYYY/MM/DD
0	ISSUED FOR FIRST SUBMISSION - APPROVAL	2025/07/31

LANDSCAPE ARCHITECT



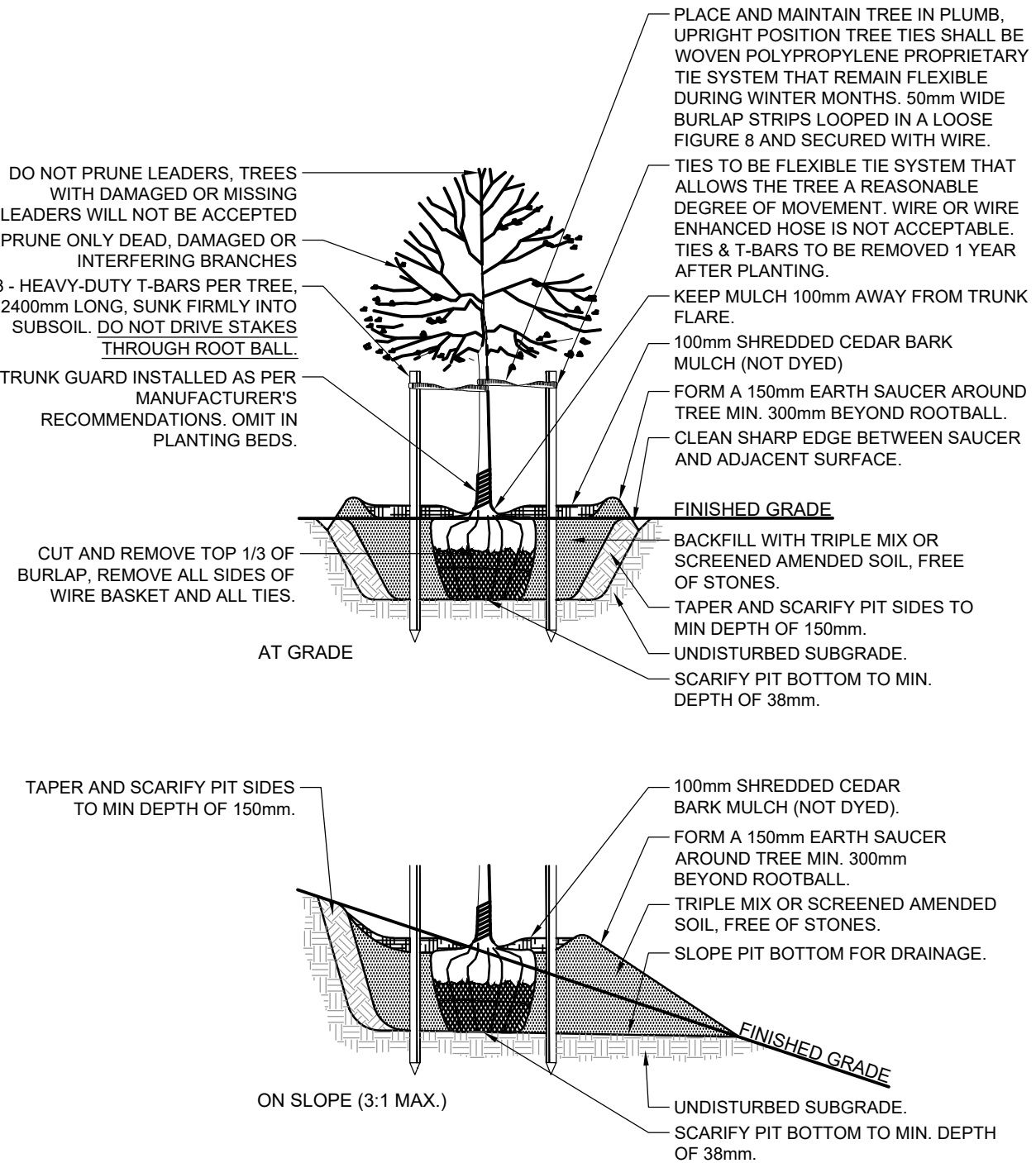
HIDDEN RIDGE TOWNSHIP OF UXBRIDGE

LANDSCAPE PLAN ENLARGEMENTS - PHASE 2



Drawn By	M.M.	Design By	M.M./S.K.	Project	2552-6856
Check By	S.K.	Check By		Drawing	LP-5

J:\2500\2552 - China Canada Jing Bei Xin Min Intl. Co. Ltd\6856 - Hidden Ridge Phase 1 Landscape\CAD\LA6856_LP.dwg, 2025-07-31 11:10:05 AM, DWG To PDF.pc3



1 **LD-1** **DECIDUOUS TREE PLANTING** N.T.S.

PLANT SCHEDULE PHASE 2 - LD-2 to LD-5					
CODE	QTY	BOTANICAL NAME	COMMON NAME	SIZE	CONTAINER
DECIDUOUS TREES					
AR	6	Acer rubrum	Red Maple	50mm cal.	W.B.
AV	4	Acer saccharinum	Silver Maple	50mm cal.	W.B.
AFJ	13	Acer x freemanii 'Jeffersred'	Autumn Blaze® Freeman Maple	50mm cal.	W.B.
CO	5	Celtis occidentalis	Common Hackberry	50mm cal.	W.B.
GTS	5	Gleditsia triacanthos var. inermis 'Shademaster'	Shademaster Honey Locust	50mm cal.	W.B.
QM	12	Quercus macrocarpa	Burr Oak	---	
QR	12	Quercus rubra	Red Oak	---	
TA	7	Tilia americana	Basswood	---	
TCG	7	Tilia cordata 'Greenspire'	Greenspire Littleleaf Linden	50mm cal.	W.B.
	71	SUBTOTAL:			

NATIVE SEED MIX			
KEY	BOTANICAL NAME	COMMON NAME	%
SIMCOE COUNTY NATIVE MIX (OSC 8150)			
	Andropogon scoparius	Little Bluestem	15%
	Asclepias syriaca	Common Milkweed	5%
	Aster laevis	Smooth Blue Aster	1%
	Aster novae-angliae	New England Aster	2%
	Elymus canadensis	Canada Wild Rye	20%
	Monarda fistulosa	Wild Bergamot	1%
	Rudbeckia hirta	Black Eyed Susan	12%
	Solidago canadensis	Canada Goldenrod	4%
	Sorghastrum nutans	Indiangrass	20%
	Sporobolus cryptandrus	Sand Drop Seed	20%
Refer to Nurse Crop Schedule for cover crop and application rate. Application rate: 25 kg/ha			

NURSE CROP SCHEDULE			
KEY	BOTANICAL NAME	COMMON NAME	%
SUMMER-FALL COVER			
	Avena sativa	Oats	50%
	Lolium multiflorum	Annual rye	50%
FALL-SPRING COVER			
	Triticum aestivum	Winter Wheat	50%
	Secale cereale	Winter Rye	50%
Sow at 25kg/ha			

1. THIS DRAWING IS THE EXCLUSIVE PROPERTY OF C.F. CROZIER & ASSOCIATES INC. AND THE MODIFICATION AND/OR REPRODUCTION OF ANY PART OF THIS DRAWING IS STRICTLY PROHIBITED WITHOUT WRITTEN AUTHORIZATION FROM THIS OFFICE.

2. THE DIGITAL FILES CONTAIN INTELLECTUAL AND DIGITAL DATA PROPERTY THAT IS THE EXCLUSIVE PROPERTY OF C.F. CROZIER & ASSOCIATES INC.

3. THE CONTRACTOR SHALL VERIFY ALL DIMENSIONS, LEVELS AND DATUMS ON SITE AND REPORT ANY DISCREPANCIES OR OMISSIONS TO C.F. CROZIER & ASSOCIATES INC. PRIOR TO CONSTRUCTION.

4. THIS DRAWING IS TO BE READ AND UNDERSTOOD IN CONJUNCTION WITH ALL OTHER PLANS AND DOCUMENTS APPLICABLE TO THIS PROJECT.

5. ALL EXISTING UNDERGROUND UTILITIES TO BE VERIFIED IN THE FIELD BY THE CONTRACTOR PRIOR TO CONSTRUCTION.

6. DO NOT SCALE DRAWINGS.
- NOTES:

1. TOPOGRAPHIC SURVEY PROVIDED BY RICHMOND SURVEYING INC. FOR PHASE 1 (COMPLETED ON 2024.03.28).

2. TOPOGRAPHIC SURVEY PROVIDED BY ECOVIEW CONSULTING SERVICES INC. FOR PHASE 2 (COMPLETED ON 2017.04.18)

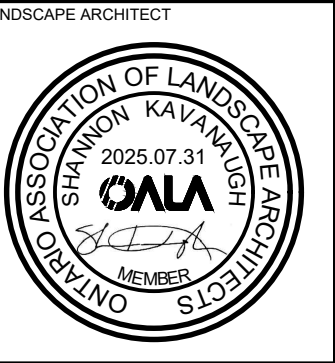
3. BASE INFORMATION PROVIDED BY TATHAM ENGINEERING LTD. (COMPLETED IN 2025.05).

4. ALL DIMENSIONS ARE IN METERS UNLESS OTHERWISE NOTED.

5. CONTRACTOR IS RESPONSIBLE FOR LOCATING ALL UTILITIES BEFORE CONSTRUCTION BEGINS.

6. REFER TO LANDSCAPE DETAIL SHEETS FOR TREE OFFSET CHART.

No.	ISSUE	DATE: YYYY/MM/DD
0	ISSUED FOR FIRST SUBMISSION - APPROVAL	2025/07/31



HIDDEN RIDGE TOWNSHIP OF UXBRIDGE

LANDSCAPE DETAILS - PHASE 2

Drawn ByM.M.

Design ByM.M./S.K.

Check ByS.K.

Project2552-6856

DrawingLD-1