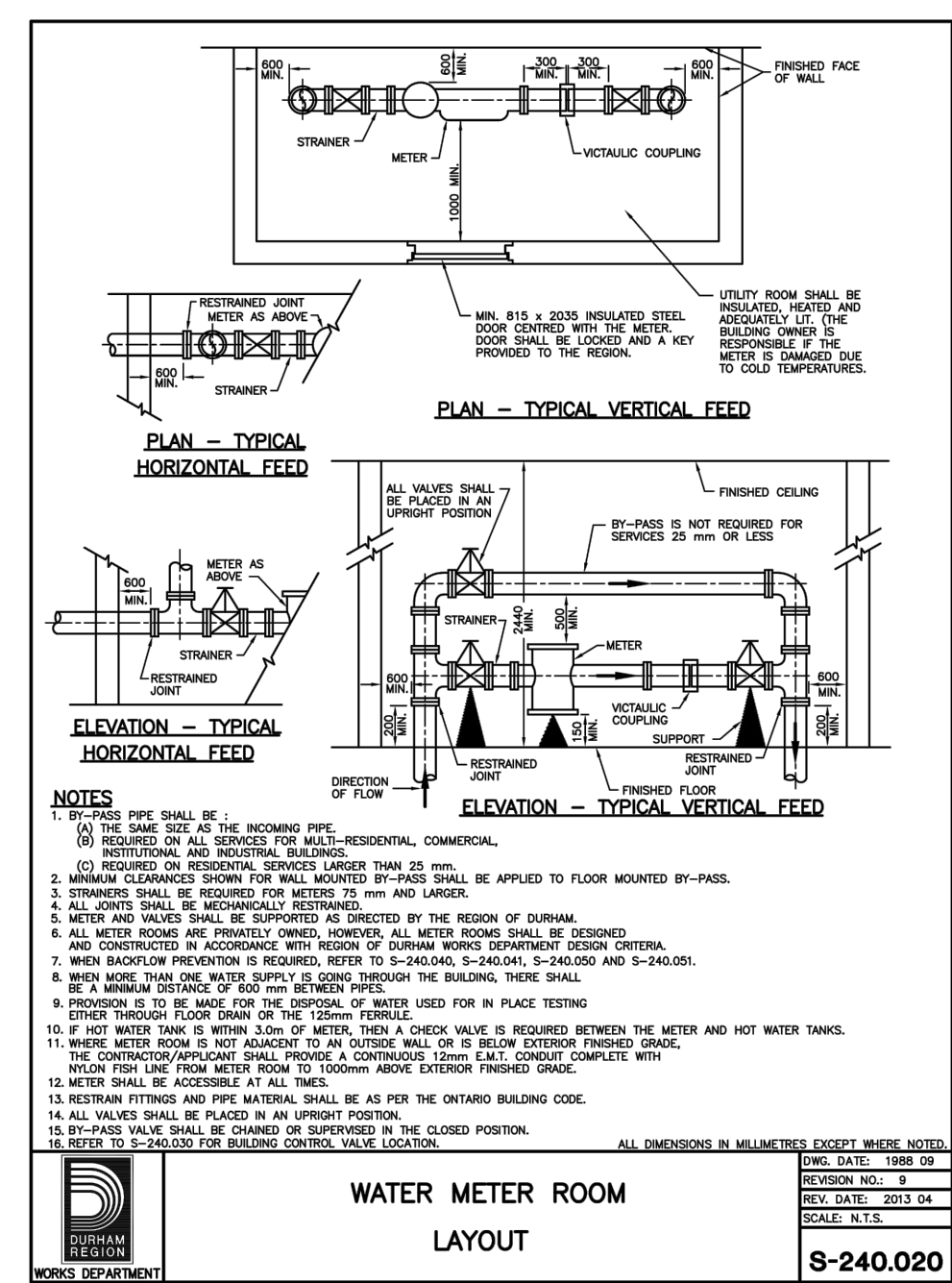
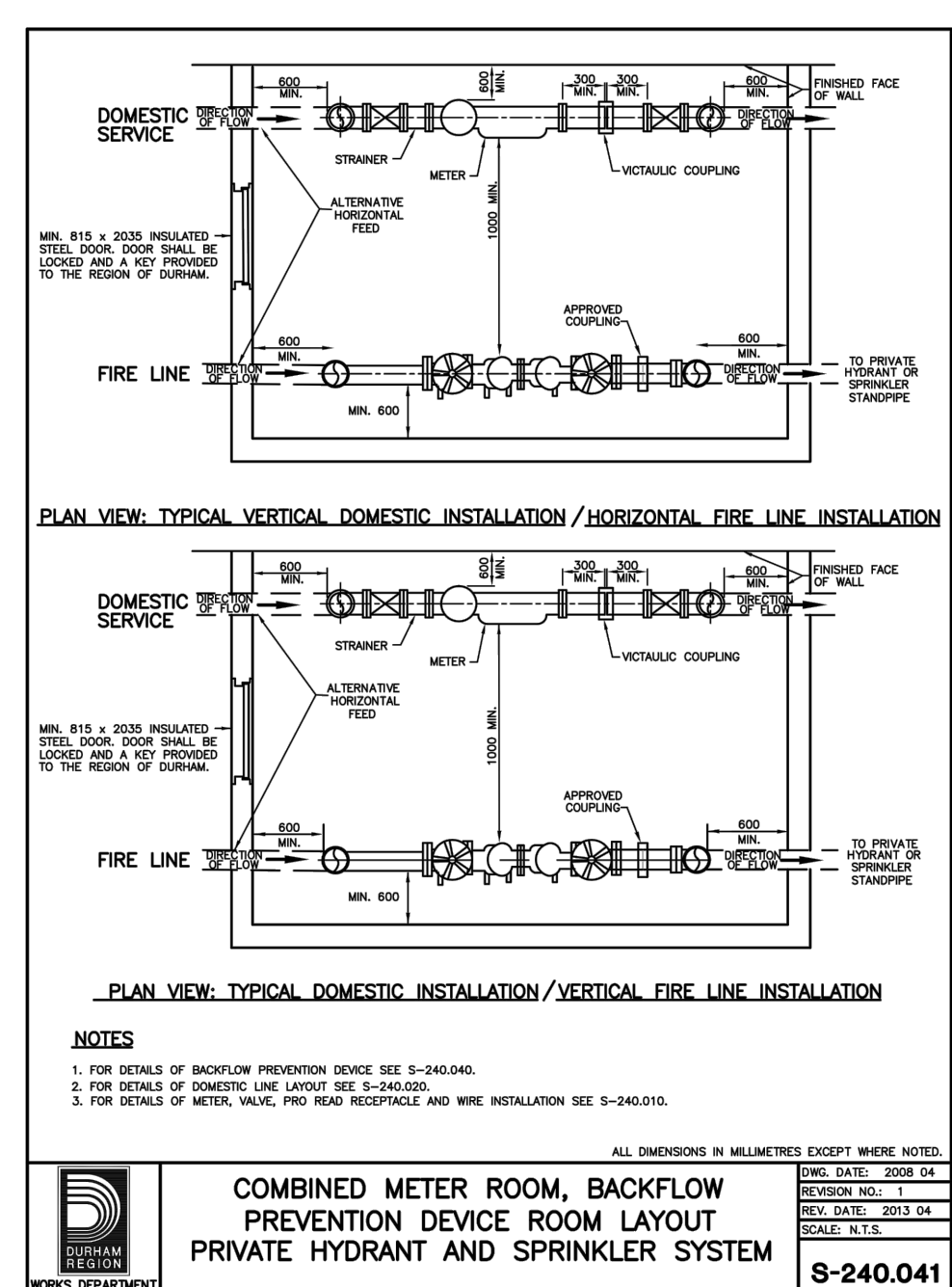
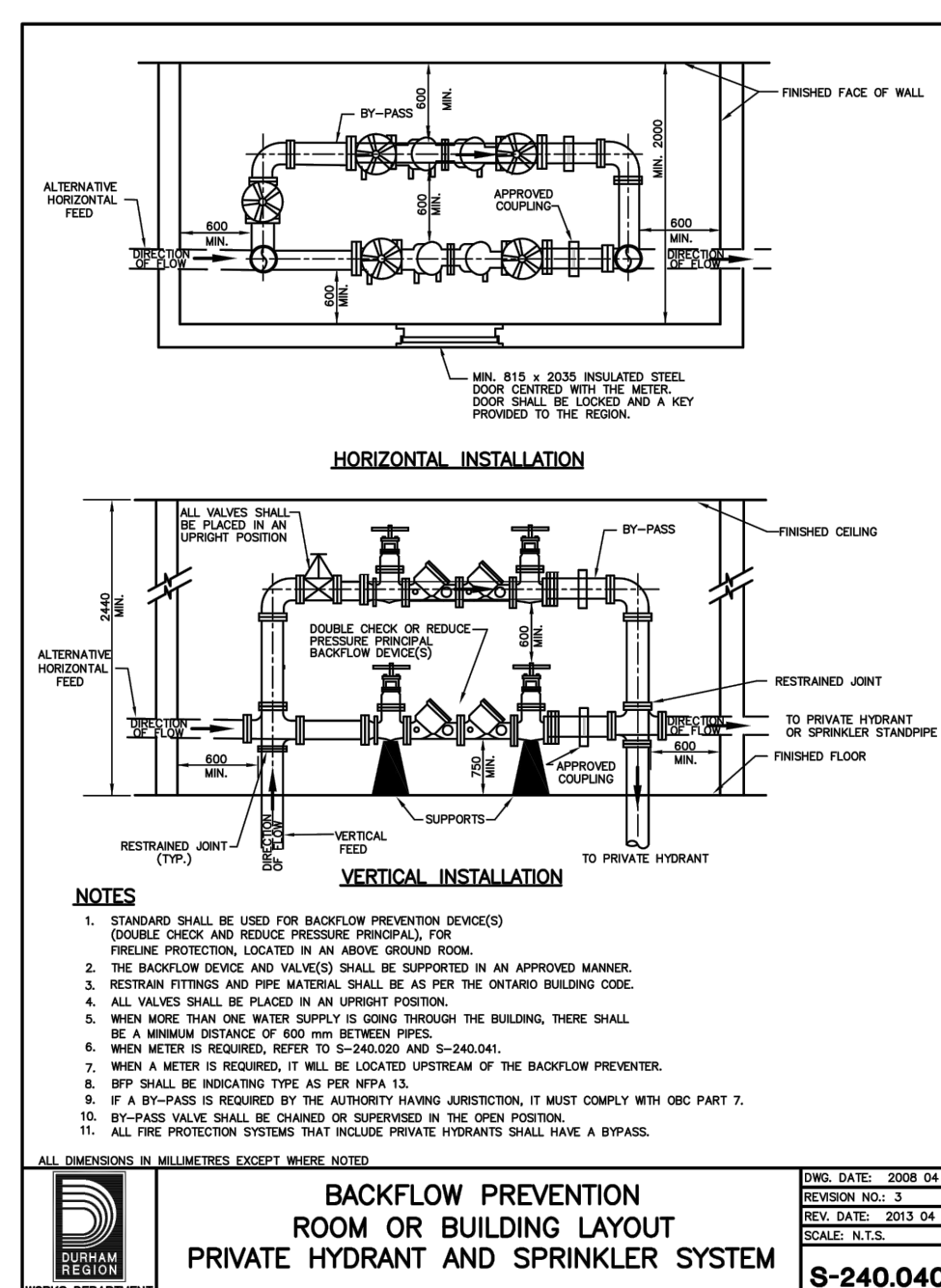


LEGEND

BENCH MARK:
 ELEVATIONS ARE GEODETIC AND ARE REFERRED TO MTD VERTICAL BENCHMARK NUMBER 0819778477 HAVING AN ORTHOMETRIC ELEVATION OF 312.926 METRES. ELEVATIONS ARE REFERENCED TO THE CANADIAN GEODETIC VERTICAL DATUM OF 1928, 1978 ADJUSTMENT (CGVD-1928:1978).

STEEL ROD WITH BRASS CAP ON THE NORTH SIDE OF HIGHWAY No. 47, 7.6 KM EAST OF THE JUNCTION OF HIGHWAY Nos. 47 & 48 AT RINGWOOD, 1.1 KM EAST OF C.N.R. CROSSING, 1.1 KM WEST OF BLOOMINGTON ROAD AND 15.2 M NORTH OF THE CENTRELINE OF HIGHWAY No. 47. LOCATED 9.6 M EAST OF THE CENTRELINE OF THE GRAVEL FARM LANE, 46 CM SOUTH OF THE NORTH-OFF-WAY FENCE LINE AND 61 CM WEST OF A BLACK AND YELLOW MARKER POST.



REFERENCES				
1	26/03/21	ISSUED ZONING BY-LAW AMENDMENT	AK	
ALL PREVIOUS ISSUES OF THIS DRAWING ARE SUPERSEDED				
Suite 201 - 701 Rossland Road East Whitby, ON L1N 8Y9 www.wsp.com				t. 905.668.3022 f. 905.668.9443
45 & 47 ANDERSON BLVD - UXBRIDGE INDUSTRIAL UXBRIDGE				
DETAILS				
DRAWN BY	LOC.	CONST.	CITY	DESIGN BY
DATE	JAN 2019		REGION	DESIGN BY
SCALE	N.T.S.			
SCALE: 1:100				
DWG. No. DT1				

