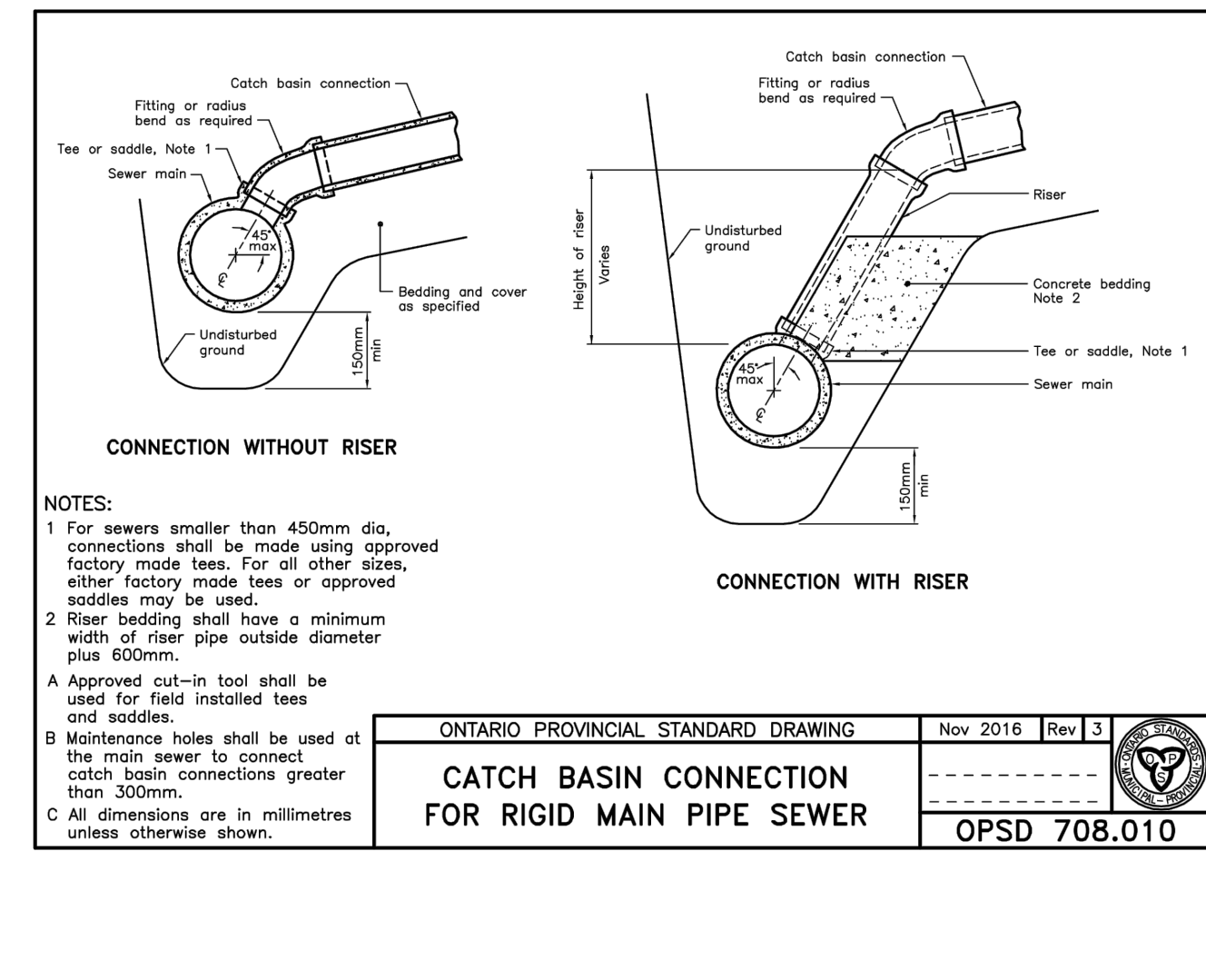
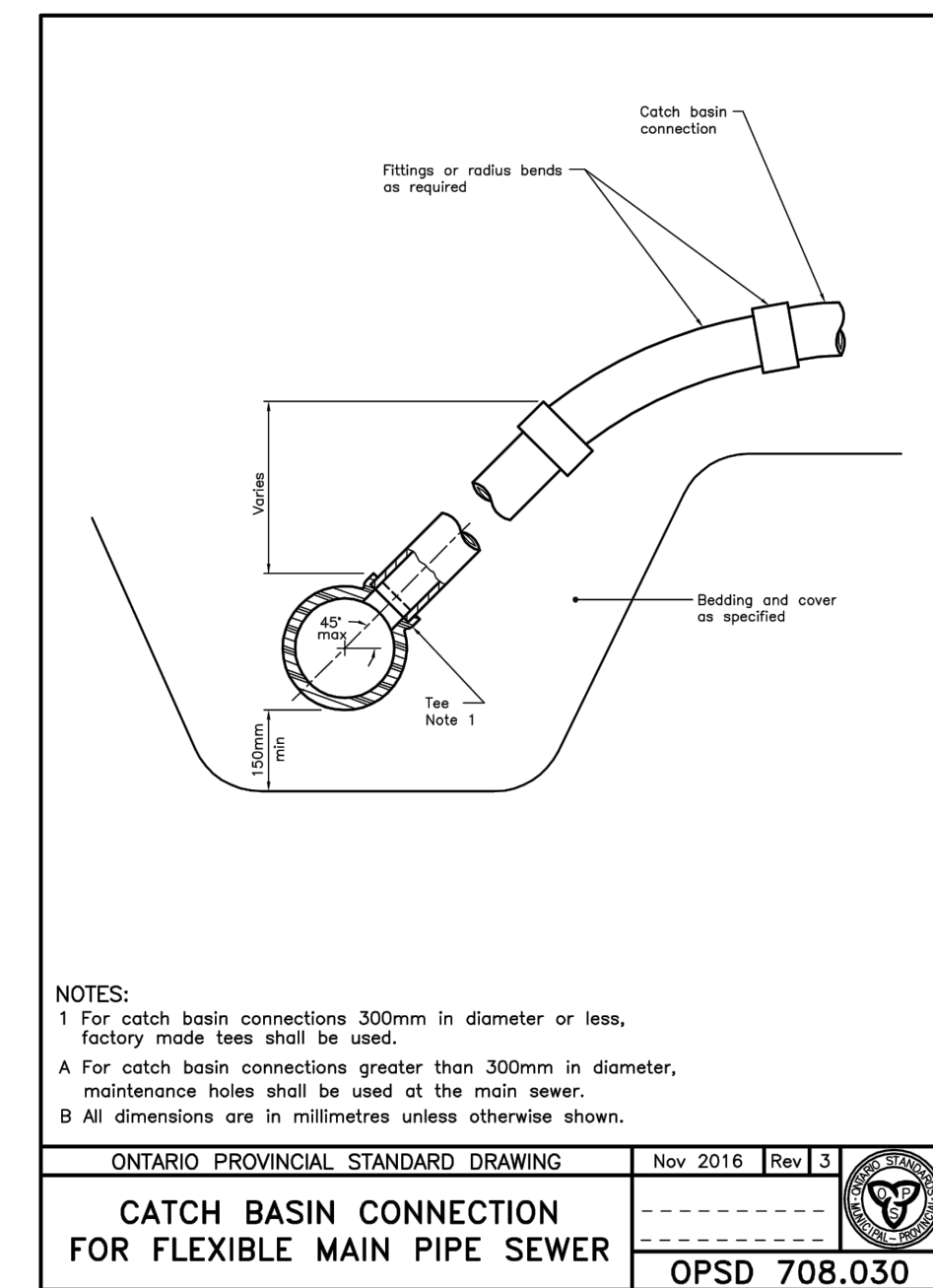
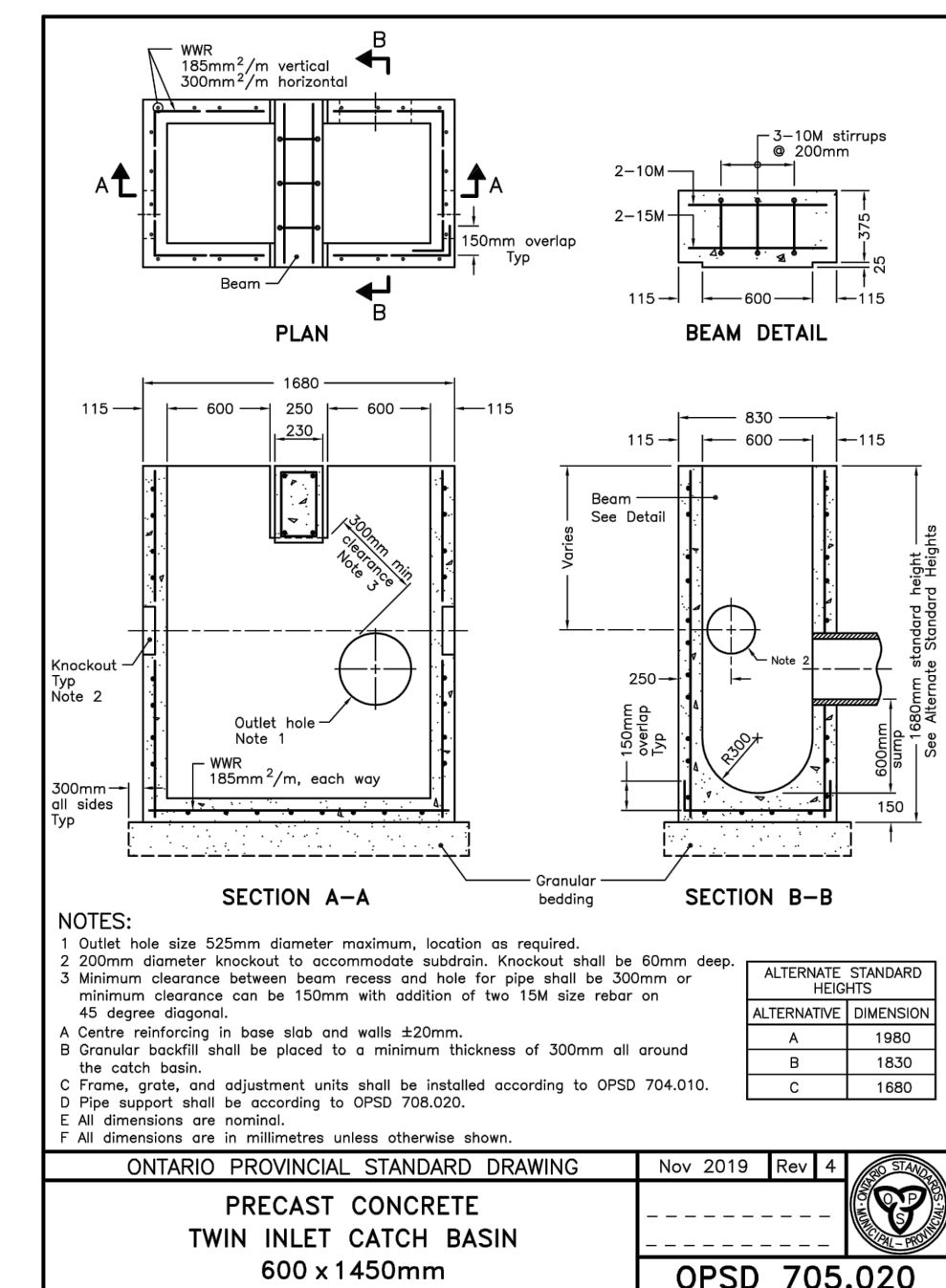
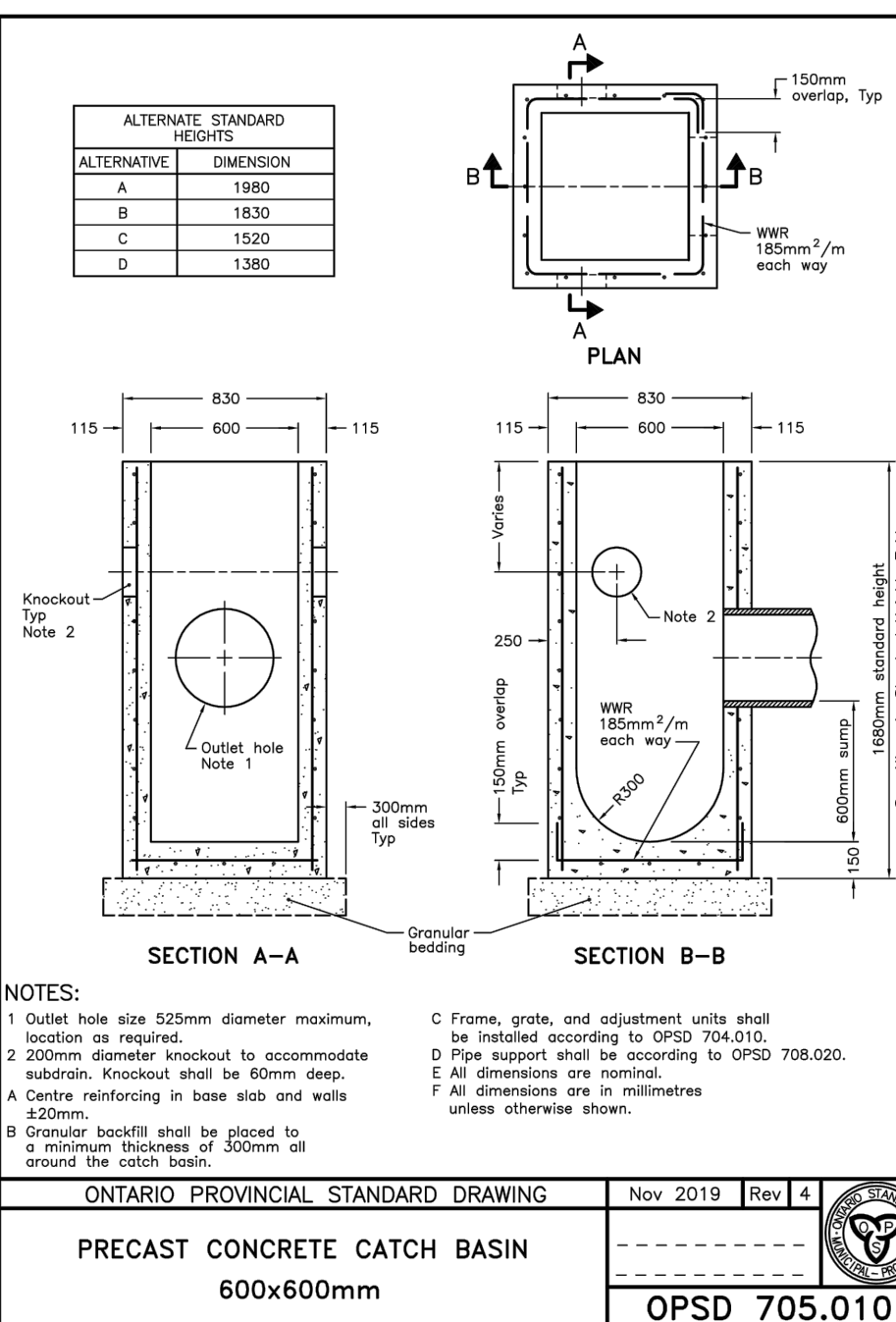
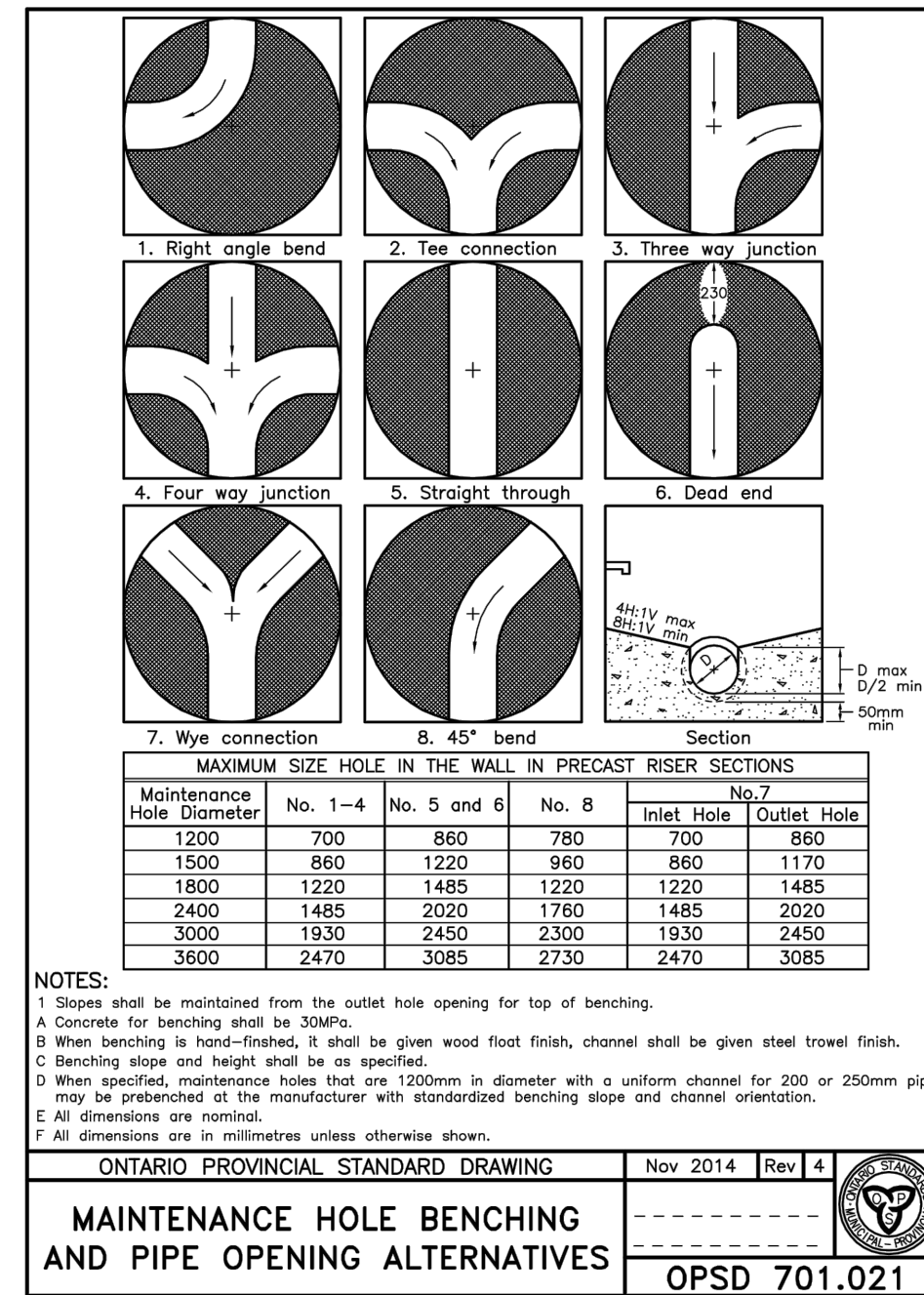
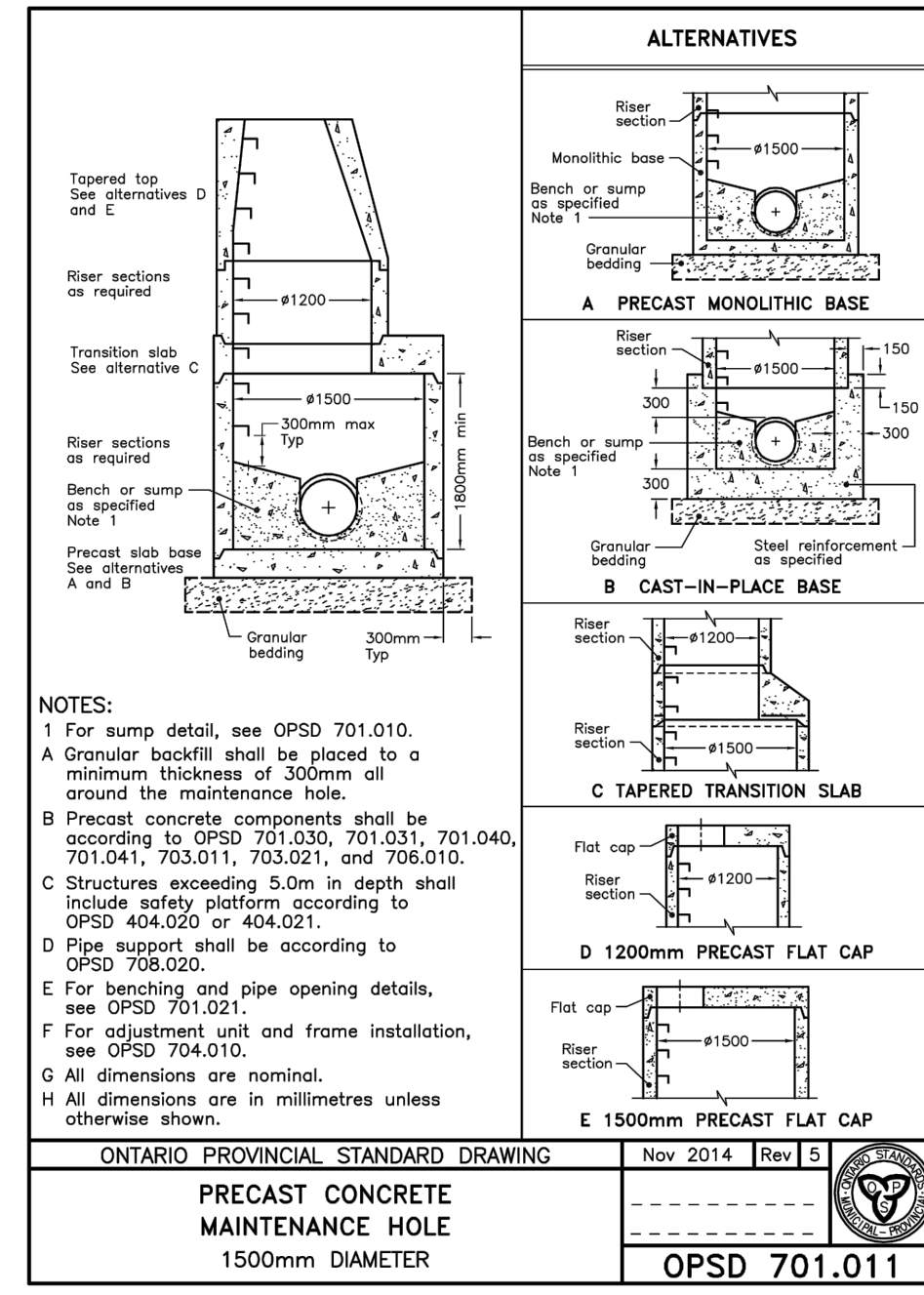
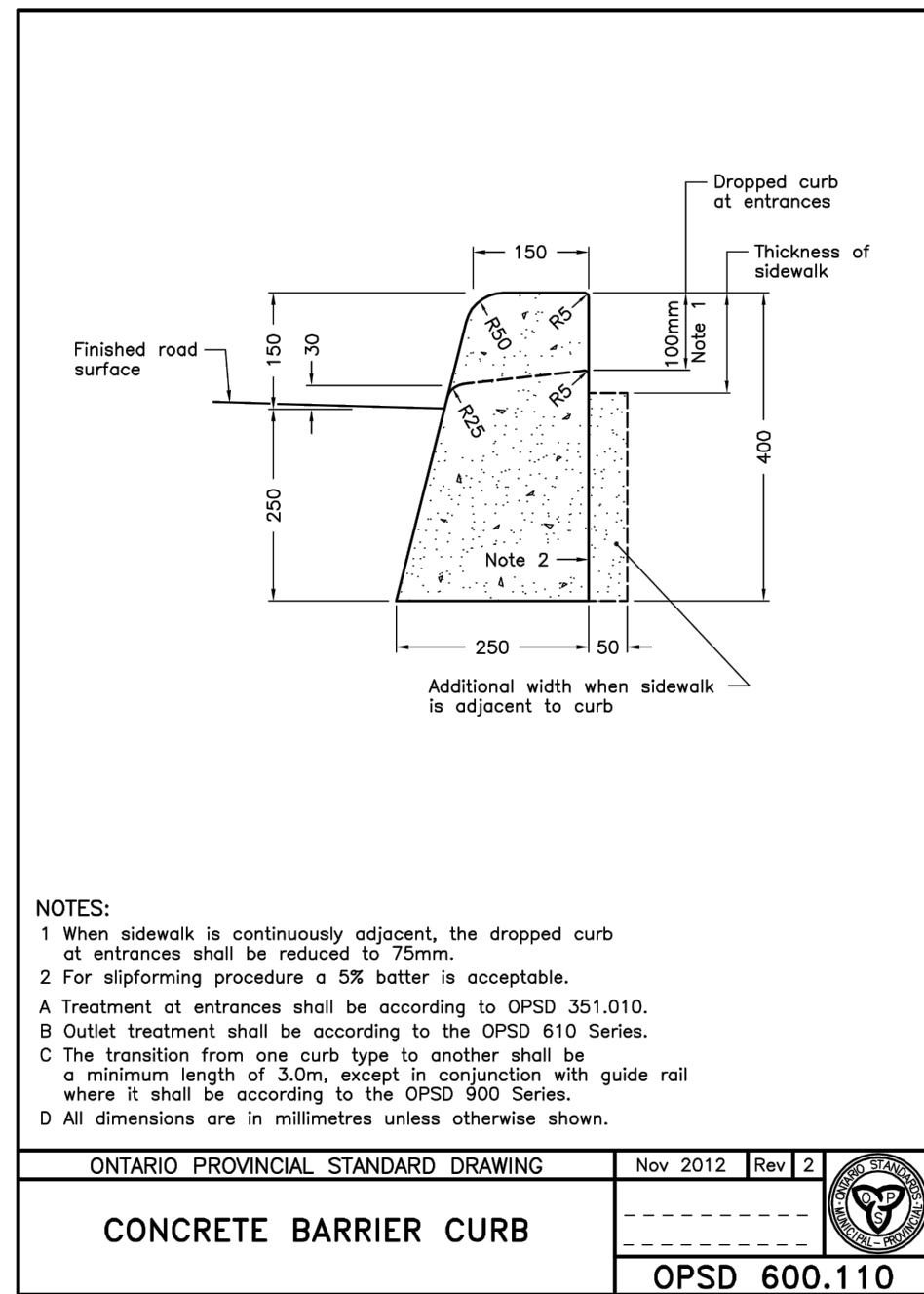
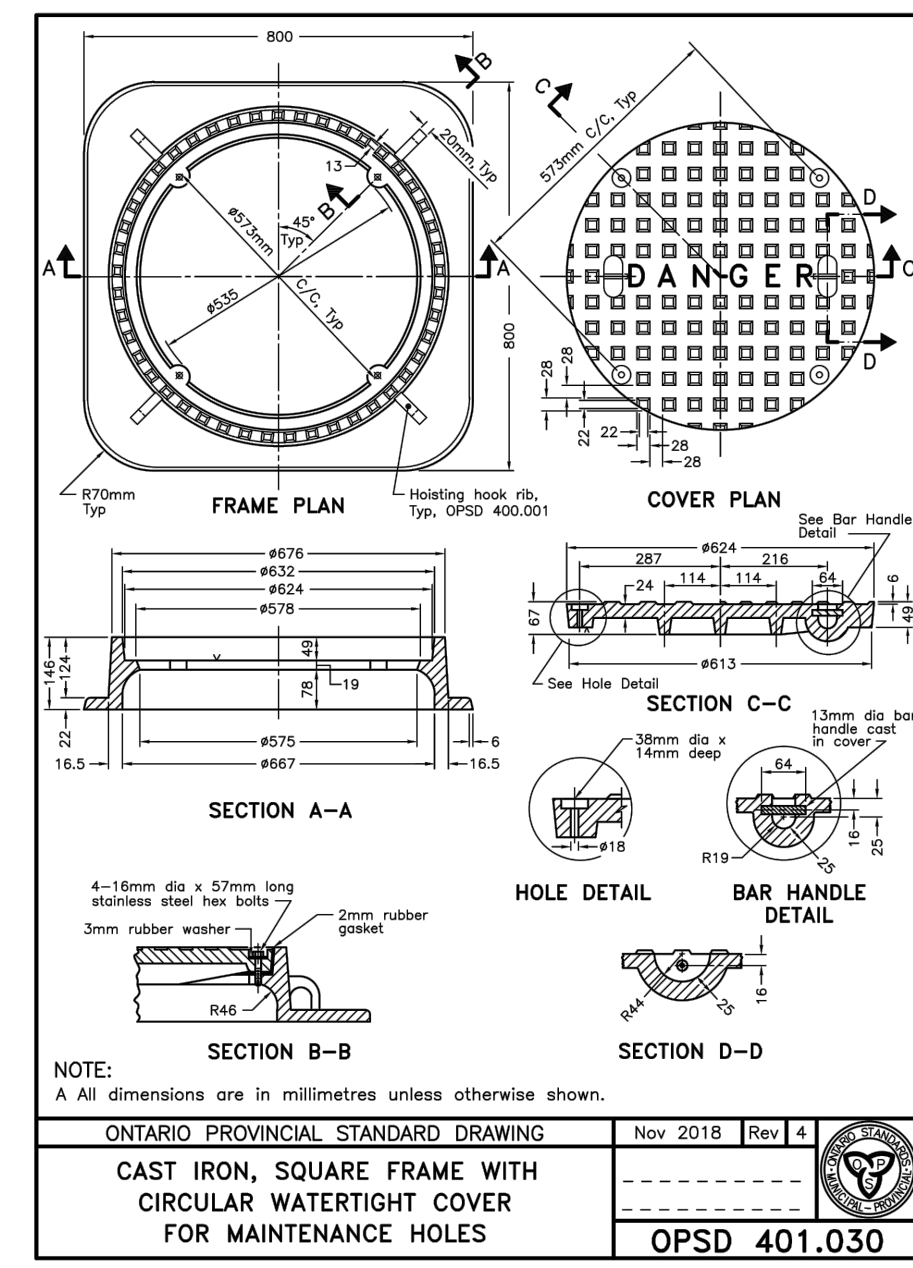
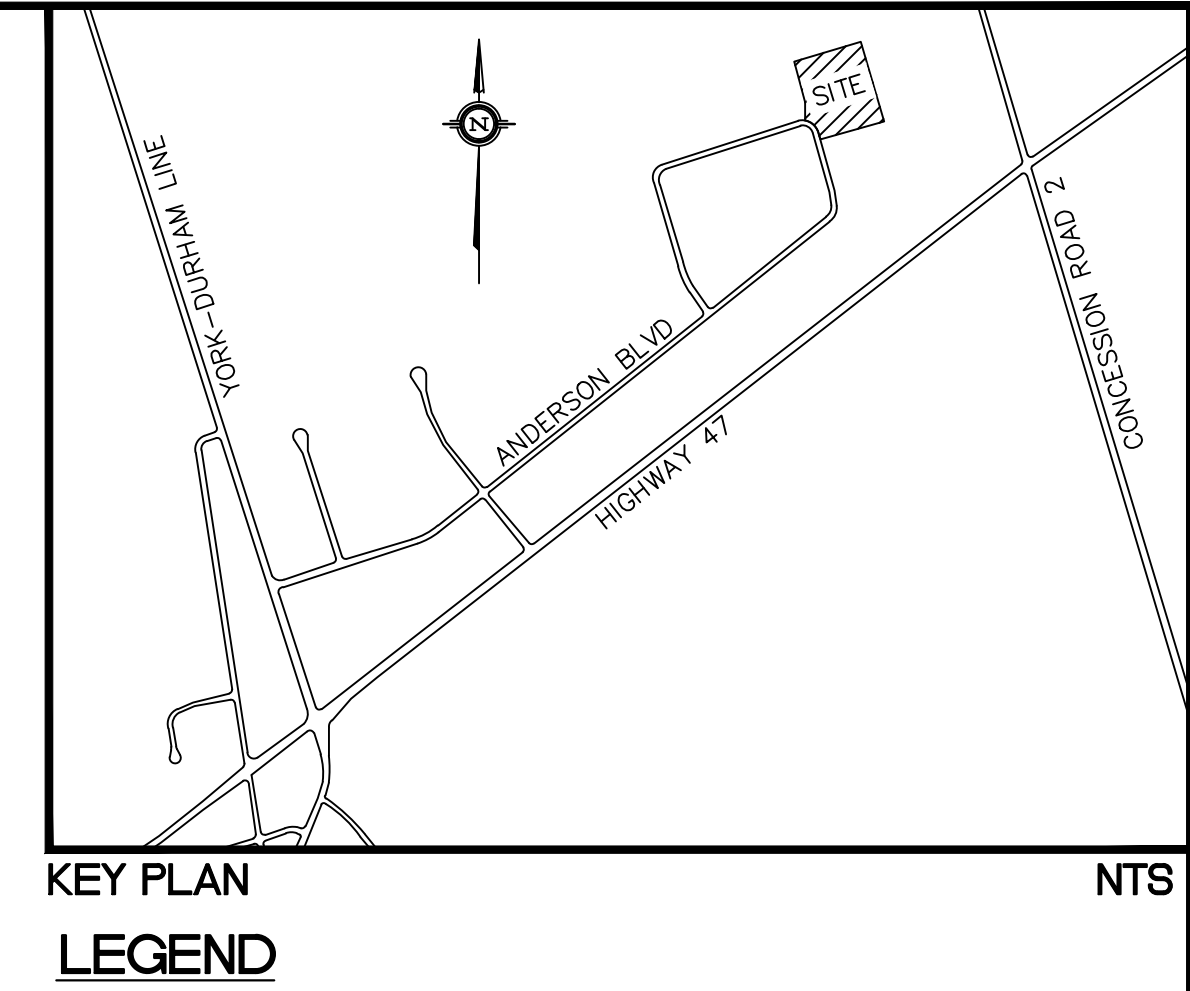
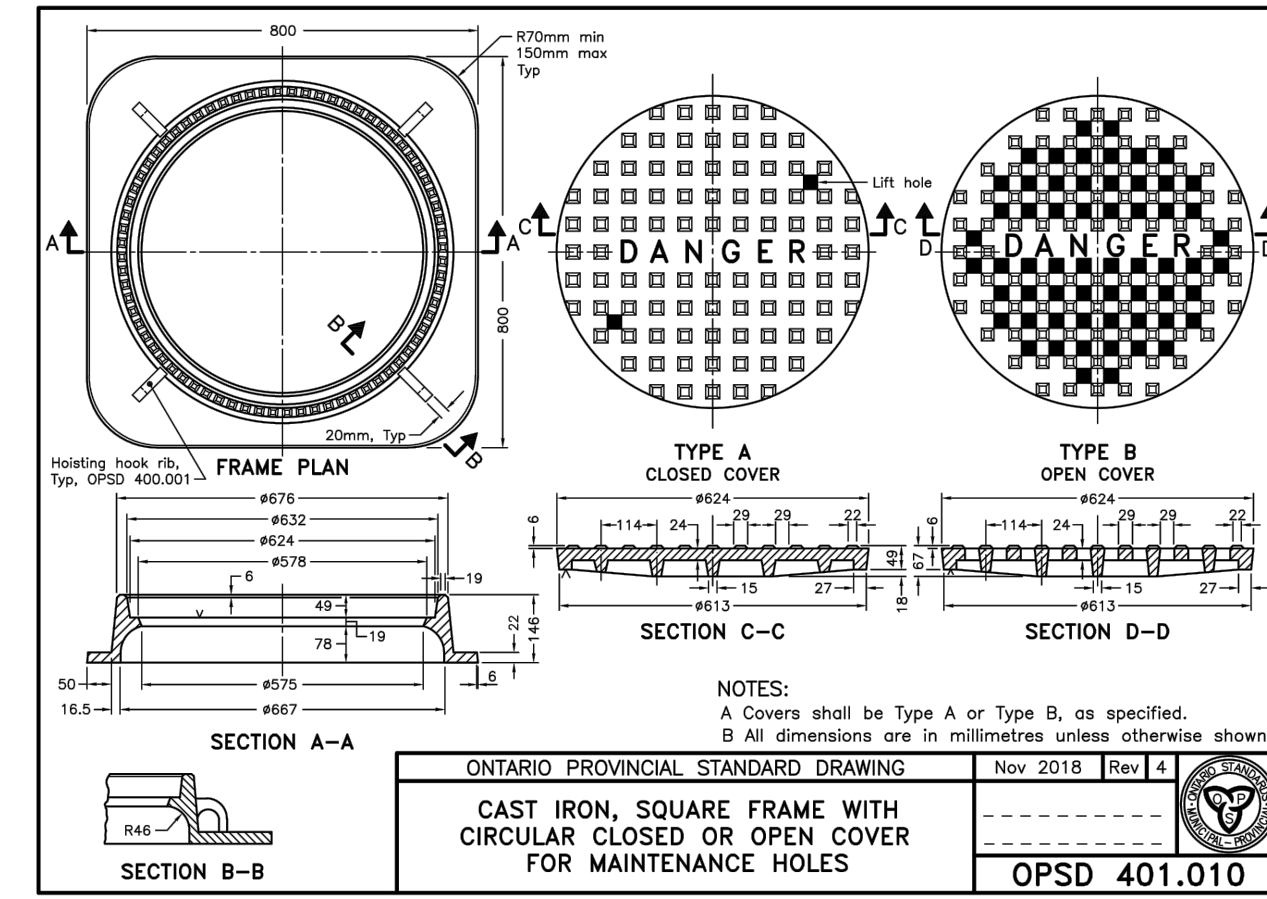
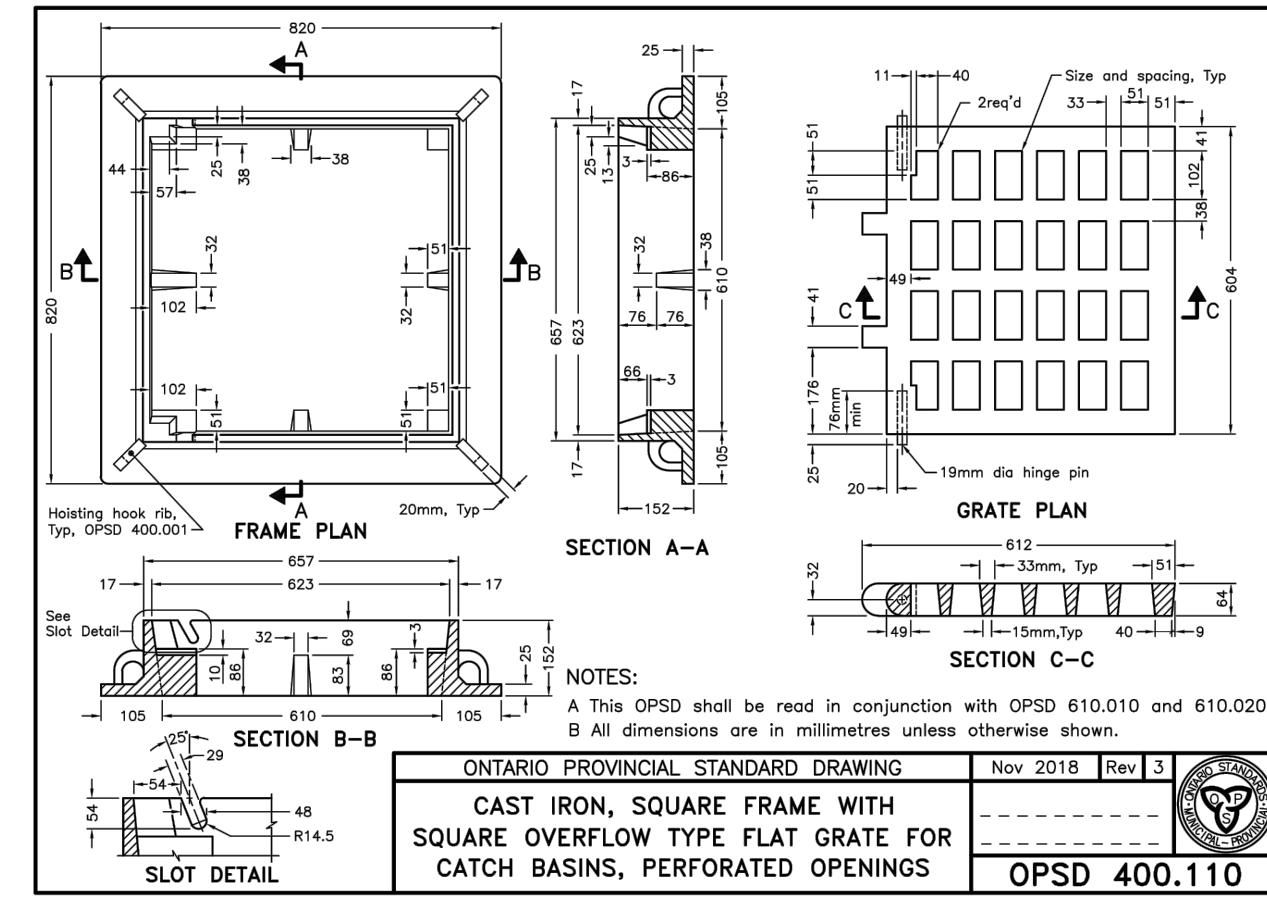
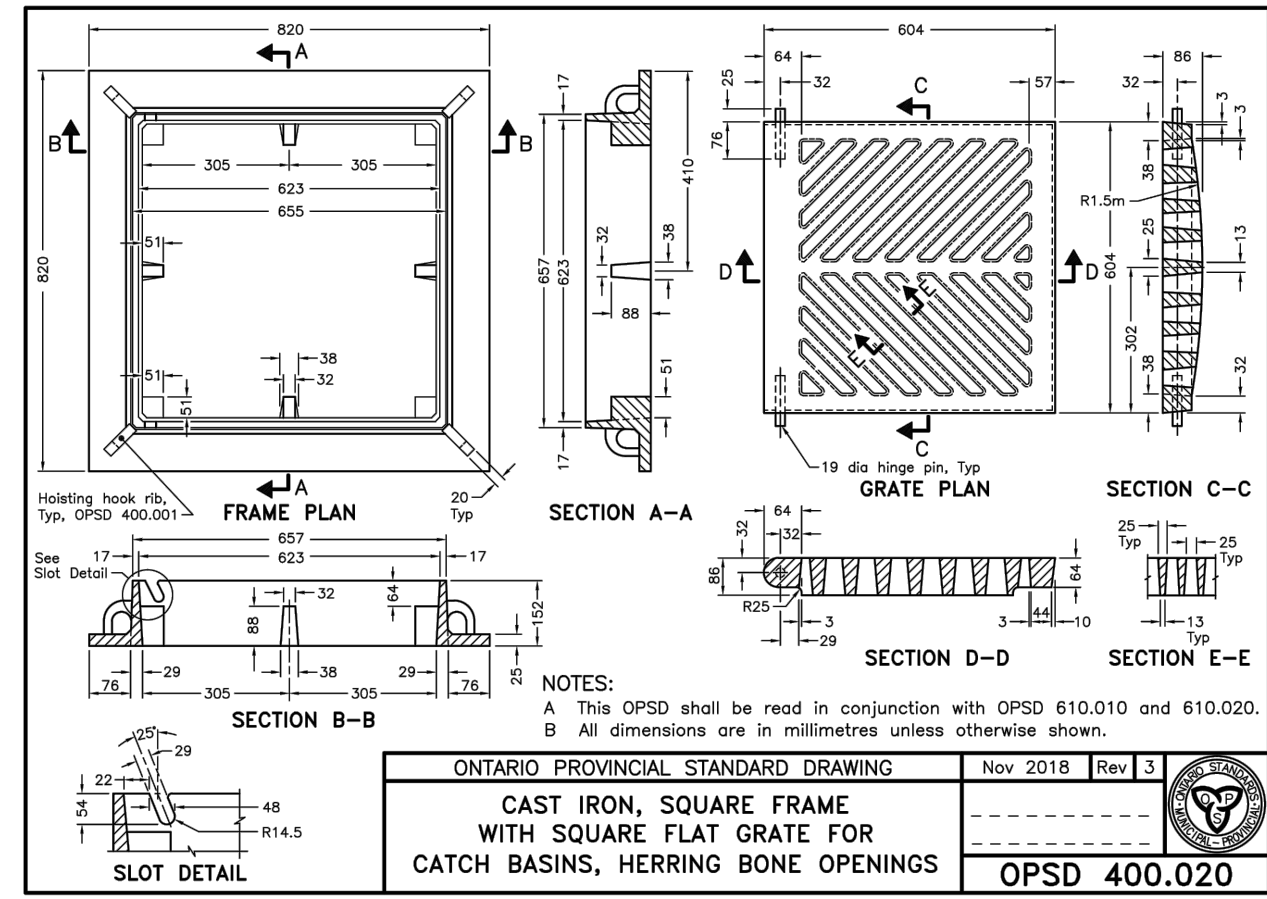


Mar. 24, 2021 - 8:45am
 C:\Users\scott.buckley\BIM_360\WSP_Canada_projects (AMER)\Land Development Ontario\Project_Files\20M-00392_Uxbridge Industrial\Drawings\20M-00392_Uxbridge Industrial - DT1.dwg - DT1.dwg



BENCH MARK:
 ELEVATIONS ARE GEODETIC AND ARE REFERRED TO MTD VERTICAL BENCHMARK NUMBER 00819778477 HAVING AN ORTHOMETRIC ELEVATION OF 312.926 METRES. ELEVATIONS ARE REFERENCED TO THE CANADIAN GEODETIC VERTICAL DATUM OF 1928, 1978 ADJUSTMENT (CGVD-1928:1978).
 STEEL ROD WITH BRASS CAP ON THE NORTH SIDE OF HIGHWAY No. 47, 7.6 KM EAST OF THE JUNCTION OF HIGHWAY Nos. 47 & 48 AT RINGWOOD, 1.1 KM EAST OF C.N.R. CROSSING, 1.1 KM WEST OF BLOOMINGTON ROAD AND 15.2 M NORTH OF THE CENTRELINE OF HIGHWAY No. 47. LOCATED 9.6 M EAST OF THE CENTRELINE OF THE GRAVEL FARM LANE, 46 CM SOUTH OF THE NORTH RIGHT-OF-WAY FENCE LINE AND 61 CM WEST OF A BLACK AND YELLOW MARKER POST.

REFERENCES			
No.	DATE	REVISION	BY
1	26/03/21	ISSUED ZONING BY-LAW AMENDMENT	AK
ALL PREVIOUS ISSUES OF THIS DRAWING ARE SUPERSEDED			
Suite 201 - 701 Rossland Road East Whitby, ON L1N 8Y9 www.wsp.com		 t. 905.668.3022 f. 905.668.9443	
45 & 47 ANDERSON BLVD - UXBRIDGE INDUSTRIAL UXBRIDGE			
DETAILS			
DRAWN BY	LOC.	CONST.	CITY
DATE	JAN 2019		REGION
DESIGN BY	SB	CHKD. BY	AK
DESIGN BY		CHKD. BY	
SCALE	N.T.S.		
20M-00392- DWG. No. DT2			