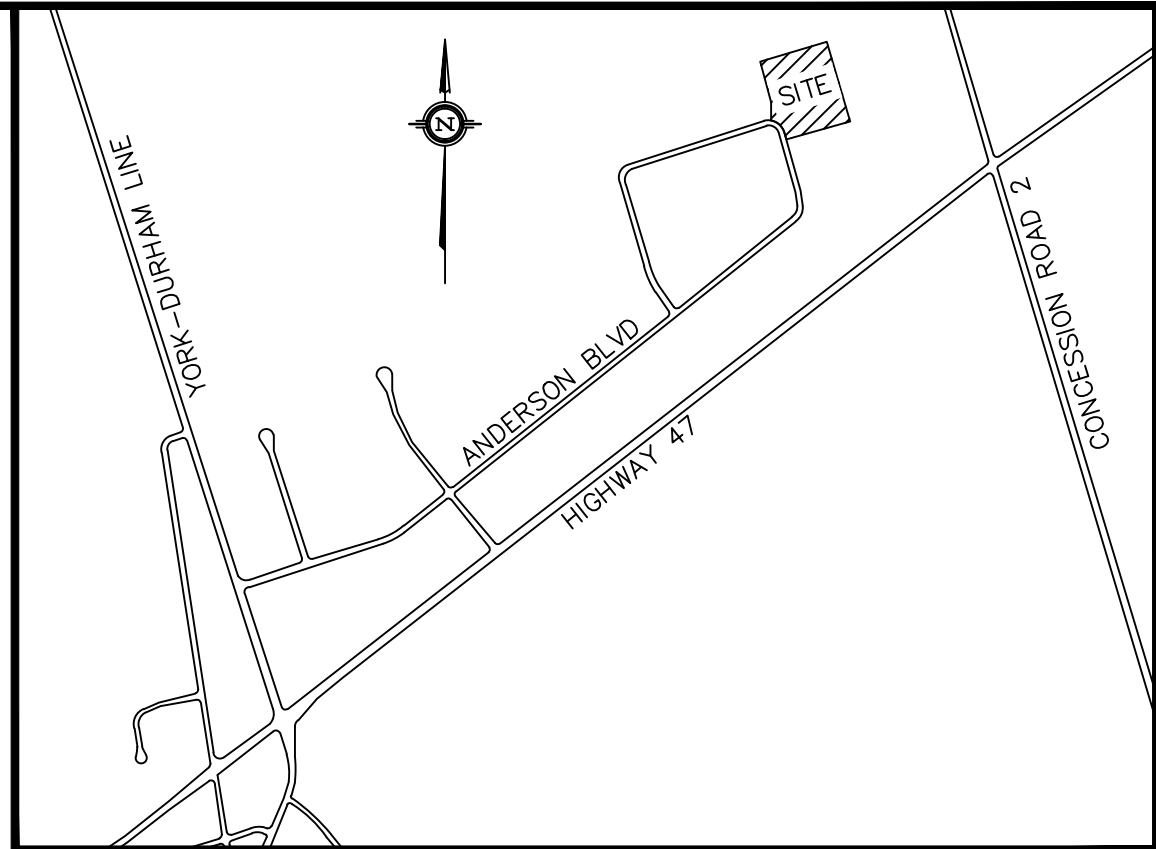
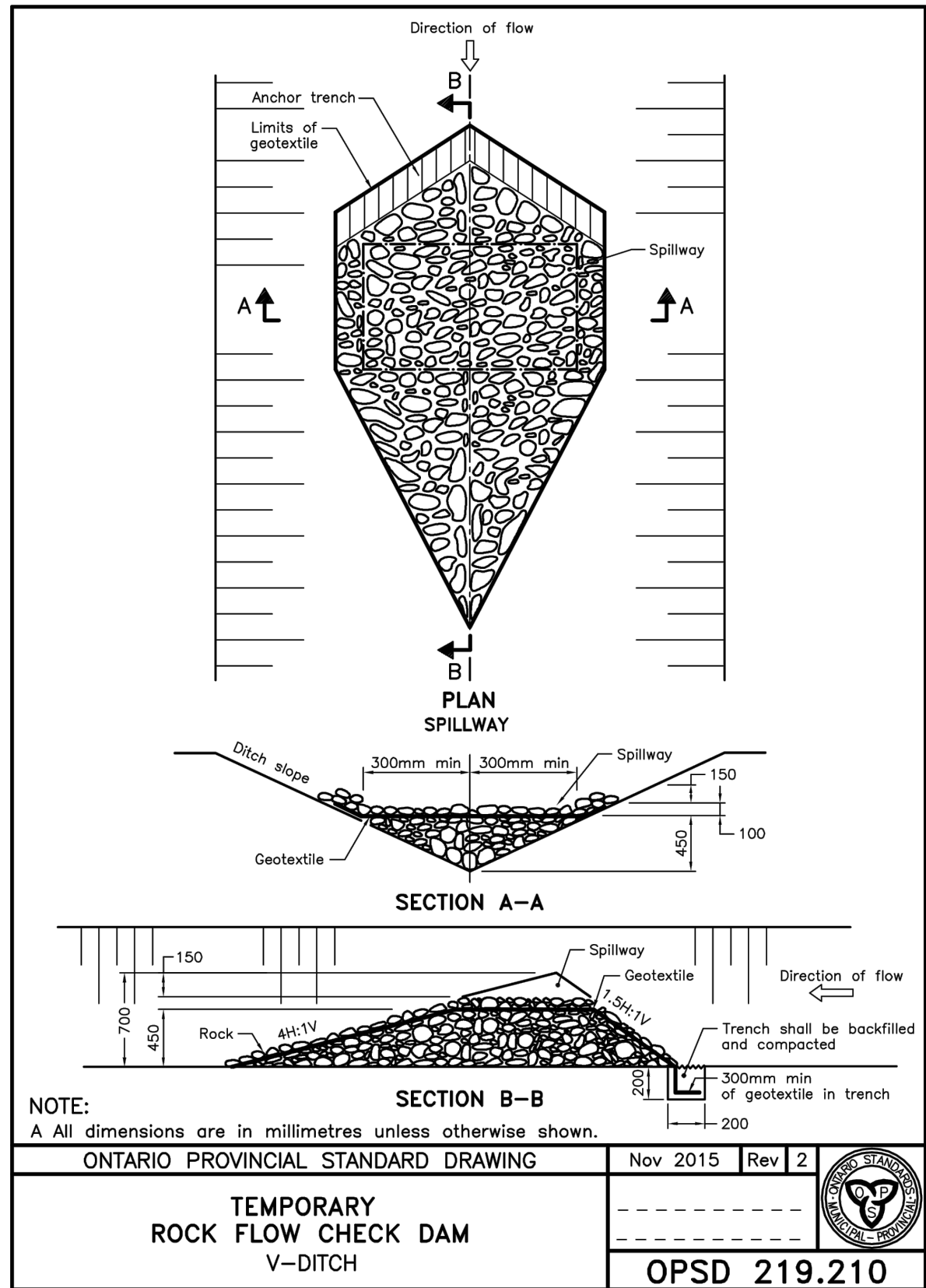
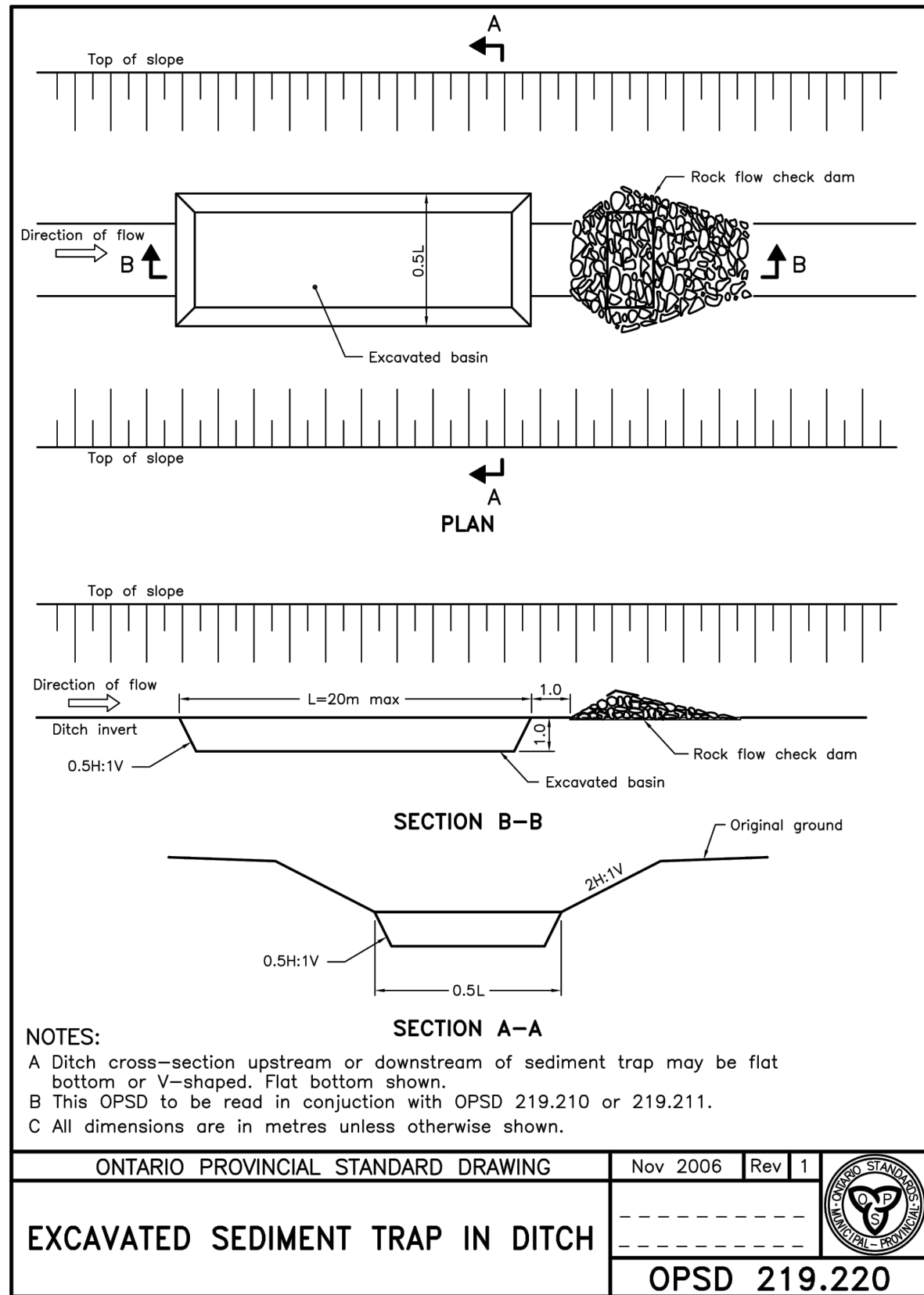
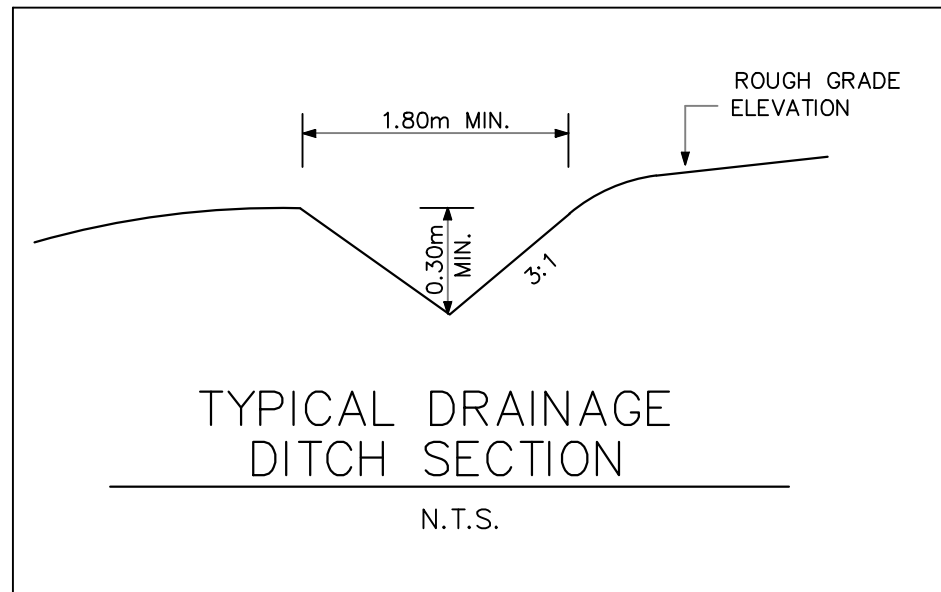
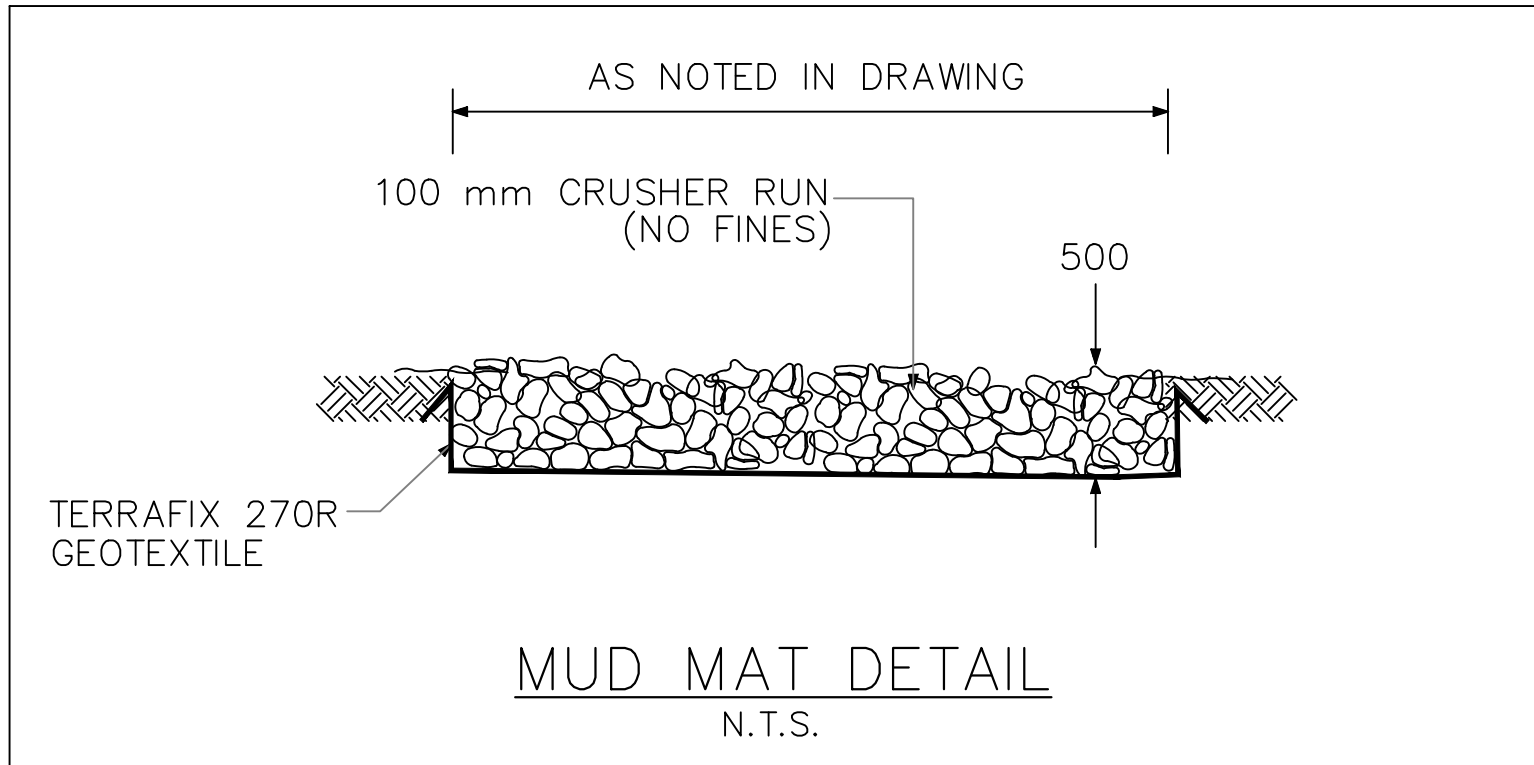
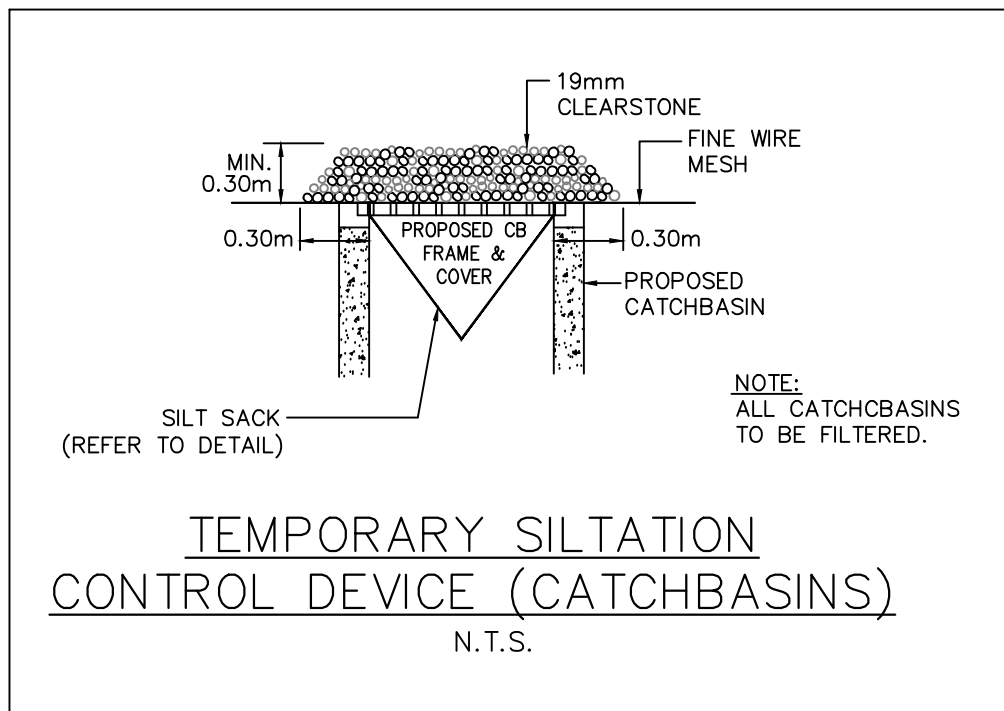
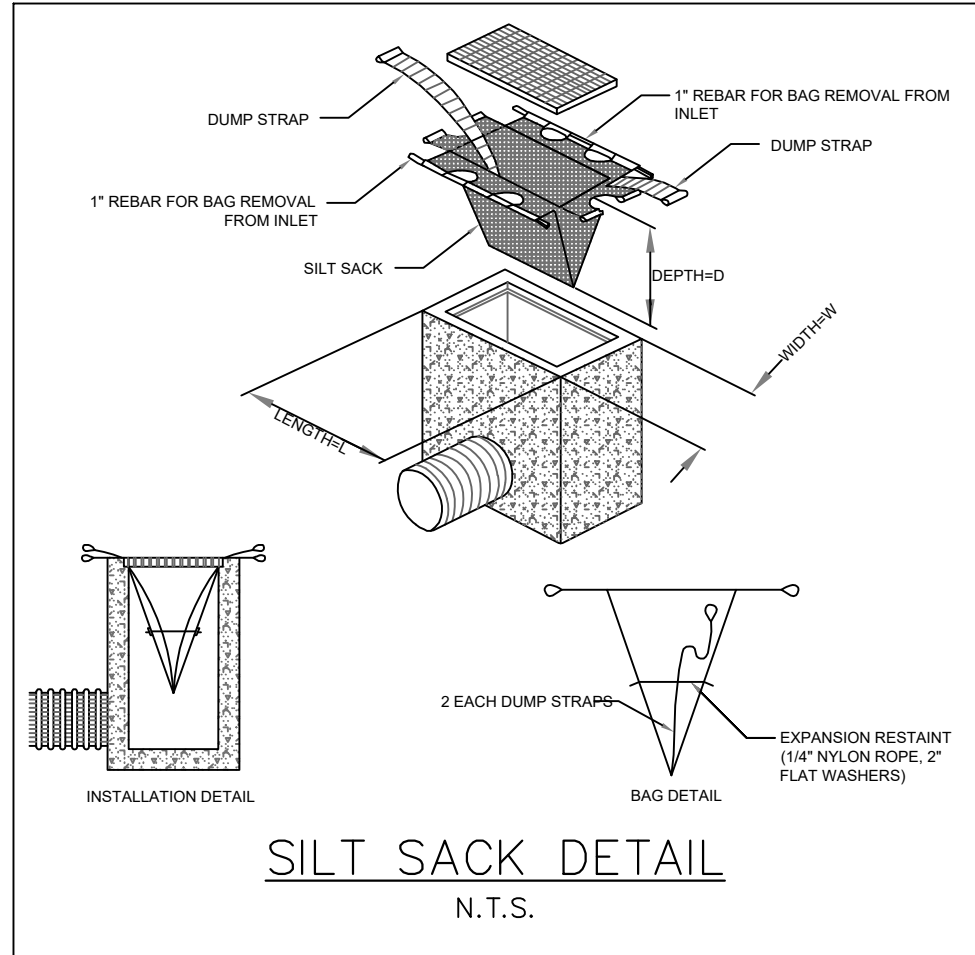
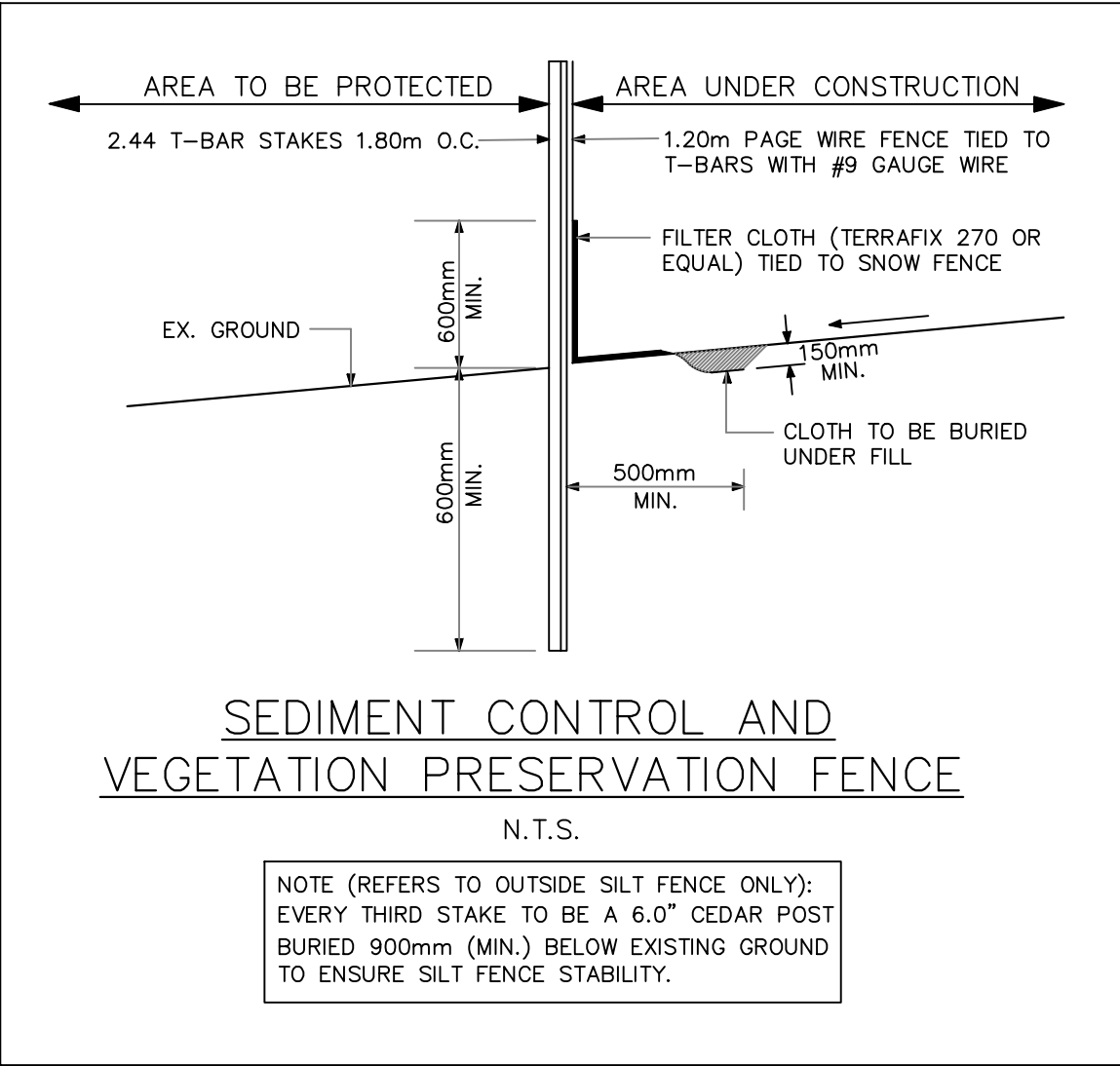


Mar 24, 2021 - 8:43am  
C:\Users\scott.buckley\BM 360\WSP Canada projects (AMER)\Land Development Ontario\Project Files\20M-00392 Uxbridge Industrial\20M-00392 - Uxbridge Industrial - DT1.dwg - tab:DT3




KEY PLAN

NTS

LEGEND

**BENCH MARK:**  
ELEVATIONS ARE GEODETIC AND ARE REFERRED TO MTO VERTICAL BENCHMARK NUMBER 00819778477 HAVING AN ORTHOMETRIC ELEVATION OF 312.928 METRES. ELEVATIONS ARE REFERENCED TO THE CANADIAN GEODETIC VERTICAL DATUM OF 1928, 1978 ADJUSTMENT (CGVD-1928:1978).

STEEL ROD WITH BRASS CAP ON THE NORTH SIDE OF HIGHWAY No. 47, 7.6 KM EAST OF THE JUNCTION OF HIGHWAY Nos. 47 & 48 AT RINGWOOD, 1.1 KM EAST OF C.N.R. CROSSING, 1.1 KM WEST OF BLOOMINGTON ROAD AND 15.2 M NORTH OF THE CENTRELINE OF HIGHWAY No. 47. LOCATED 9.6 M EAST OF THE CENTRELINE OF THE GRAVEL FARM LANE, 46 CM SOUTH OF THE NORTH RIGHT-OF-WAY FENCE LINE AND 61 CM WEST OF A BLACK AND YELLOW MARKER POST.

REFERENCES						
1	26/03/21	ISSUED ZONING BY-LAW AMENDMENT		AK		
No.	DATE	REVISION		BY		
ALL PREVIOUS ISSUES OF THIS DRAWING ARE SUPERSEDED						
Suite 201 - 701 Rossland Road East Whitby, ON L1N 8Y9 www.wsp.com				t. 905.668.3022 f. 905.668.9443		
45 & 47 ANDERSON BLVD – UXBRIDGE INDUSTRIAL UXBRIDGE						
DETAILS						
DRAWN BY CAD	LOC.	CONST.	CITY	DESIGN BY SB	CHKD. BY AK	APPD. BY AK
DATE	JAN 2019		REGION	DESIGN BY	CHKD. BY	APPD. BY
SCALE		N.T.S.				
20M-00392-		DWG. No. DT3				

