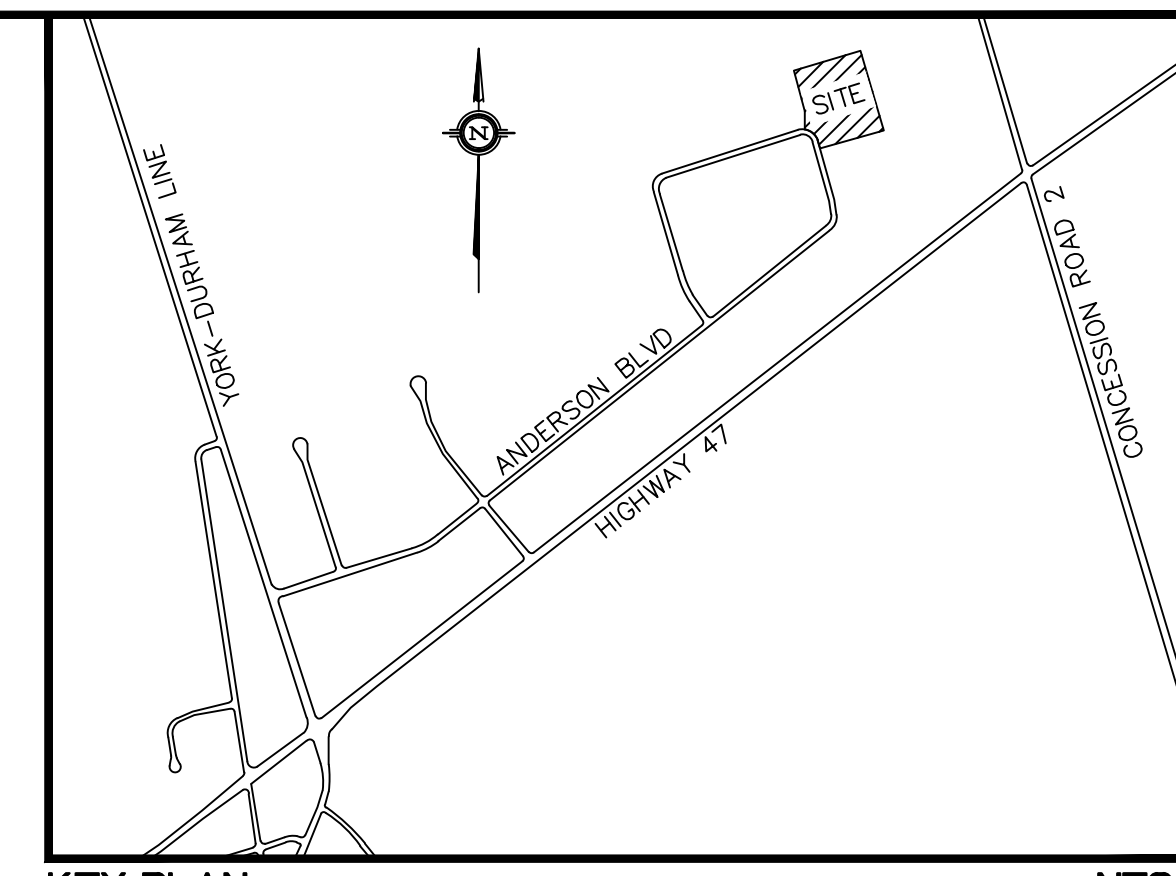
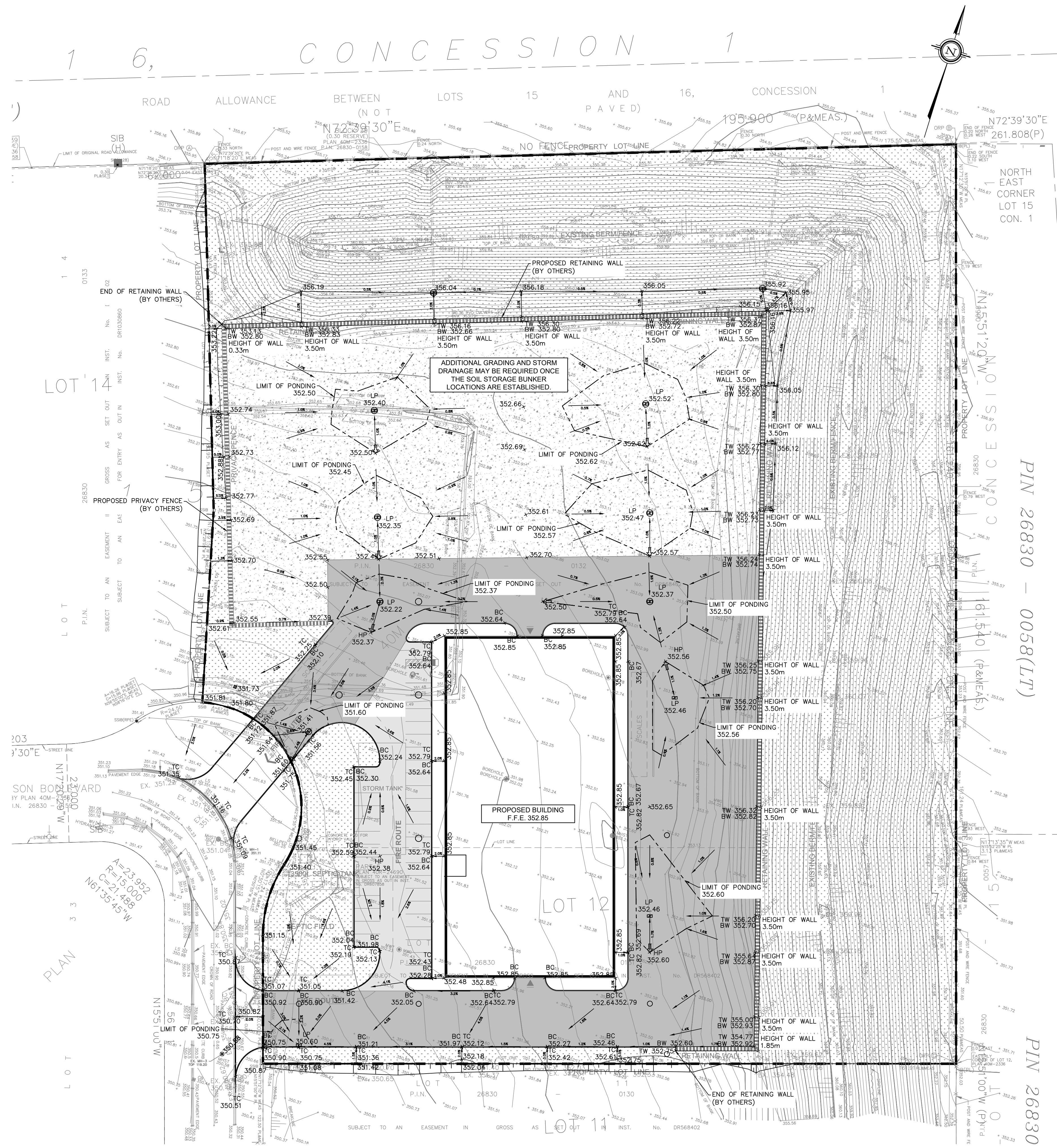


Mar 24, 2021 - 9:41am
 C:\Users\scott.buckley\BIM_360\WSP_Canada_projects\AMER\Land_Development\Ontario\Project_Files\20M-00392_Uxbridge_Industrial\20M-00392_Uxbridge_Industrial - S61.dwg - tab:SG1



KEY PLAN NTS

- LEGEND**
- PROPERTY LINE
 - x121.13 EXISTING GROUND ELEVATION
 - S/C/T/C EXISTING BOTTOM/TOP OF CURB ELEVATION
 - x120.78 PROPOSED GROUND ELEVATION
 - B/C/T/C PROPOSED BOTTOM/TOP OF CURB ELEVATION
 - x120.78 PROPOSED HIGH/LOW POINT ELEVATION
 - PROPOSED LIGHT-DUTY ASPHALT
 - PROPOSED HEAVY-DUTY ASPHALT
 - PROPOSED CONCRETE SLAB PAVEMENT
 - PROPOSED LANDSCAPED AREA
 - PROPOSED CONCRETE BARRIER CURB AS PER OPSD 600.110
 - PROPOSED CONCRETE BARRIER CURB WITH STANDARD GUTTER AS PER OPSD 600.040
 - PROPOSED DEPRESSED CONCRETE BARRIER CURB WITH STANDARD GUTTER AS PER OPSD 600.040
 - EXISTING MAINTENANCE HOLE
 - EXISTING CATCHBASIN/CATCHBASIN MAINTENANCE HOLE
 - PROPOSED MAINTENANCE HOLE
 - PROPOSED CATCHBASIN MAINTENANCE HOLE
 - PROPOSED DOUBLE CATCHBASIN
 - CATCHBASIN AND CATCHBASIN MANHOLE WITH 3m LENGTHS OF 150mm SUBDRAIN WITH END CAP AND 300mm OF 19mm CLEAR STONE WRAPPED WITH FILTER CLOTH
 - 150mm SUBDRAIN WITH END CAP AND 300mm OF 19mm CLEAR STONE WRAPPED WITH FILTER CLOTH
 - ← DIRECTION OF MAJOR OVERLAND FLOW

BENCH MARK:
 ELEVATIONS ARE GEODETIC AND ARE REFERRED TO MTD VERTICAL BENCHMARK NUMBER 00819778477 HAVING AN ORTHOMETRIC ELEVATION OF 312.926 METRES. ELEVATIONS ARE REFERENCED TO THE CANADIAN GEODETIC VERTICAL DATUM OF 1928, 1978 ADJUSTMENT (CGVD-1928:1978).
 STEEL ROD WITH BRASS CAP ON THE NORTH SIDE OF HIGHWAY No. 47, 7.6 KM EAST OF THE JUNCTION OF HIGHWAY Nos. 47 & 48 AT RINGWOOD, 1.1 KM EAST OF C.N.R. CROSSING, 1.1 KM WEST OF BLOOMINGTON ROAD AND 15.2 M NORTH OF THE CENTRELINE OF HIGHWAY No. 47. LOCATED 9.6 M EAST OF THE CENTRELINE OF THE GRAVEL FARM LANE, 46 CM SOUTH OF THE NORTH RIGHT-OF-WAY FENCE LINE AND 61 CM WEST OF A BLACK AND YELLOW MARKER POST.



- REFER TO ARCHITECTURAL PLANS FOR SITE PLAN DETAILS
- REFER TO LANDSCAPE PLANS FOR WALKWAY AND LANDSCAPE DETAILS
- REFER TO ELECTRICAL PLANS FOR LIGHTING LAYOUT & DETAILS
- REFER TO DWG. ST-1 FOR STORM DRAINAGE PLAN
- REFER TO DWG. SS-1 FOR SITE SERVICING PLAN
- REFER TO DWG. ES-1 FOR EROSION & SEDIMENT CONTROL PLAN
- REFER TO DWG. NT-1 FOR GENERAL NOTES AND DT-1 - DT-3 FOR DETAILS

REFERENCES			
No.	DATE	REVISION	BY
1	26/03/21	ISSUED ZONING BY-LAW AMENDMENT	AK
ALL PREVIOUS ISSUES OF THIS DRAWING ARE SUPERSEDED			
Suite 201 - 701 Rossland Road East Whitby, ON L1N 8Y9 www.wsp.com		 t. 905.668.3022 f. 905.668.9443	
45 & 47 ANDERSON BLVD - UXBRIDGE INDUSTRIAL UXBRIDGE			
SITE GRADING PLAN			
DRAWN BY	LOC.	CONST.	CITY
DATE	JAN 2019		REGION
DESIGN BY	SB	CHKD. BY	AK
DESIGN BY		CHKD. BY	AK
SCALE		1:500	
20M-00392-		DWG. No. SG-1	