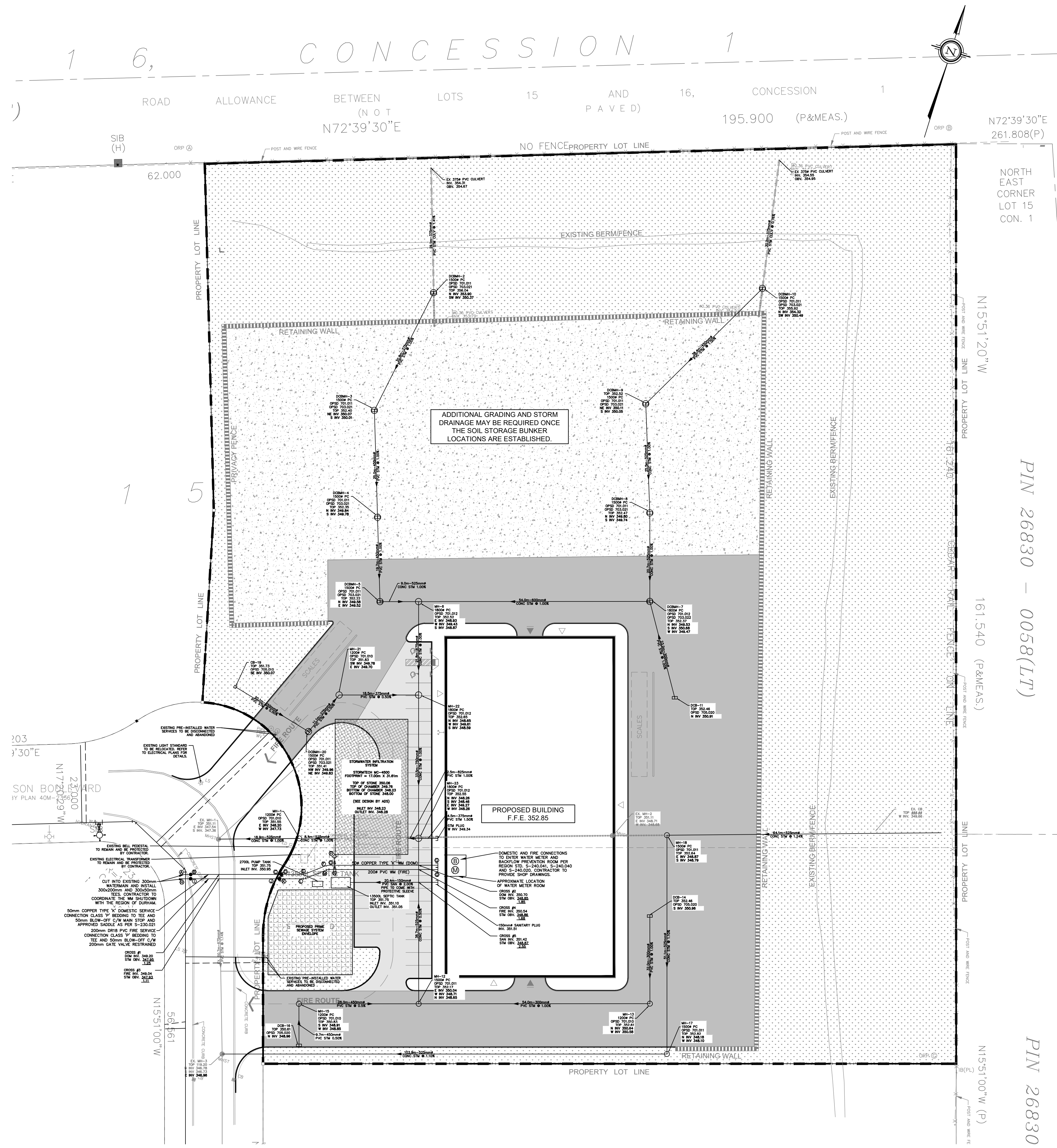
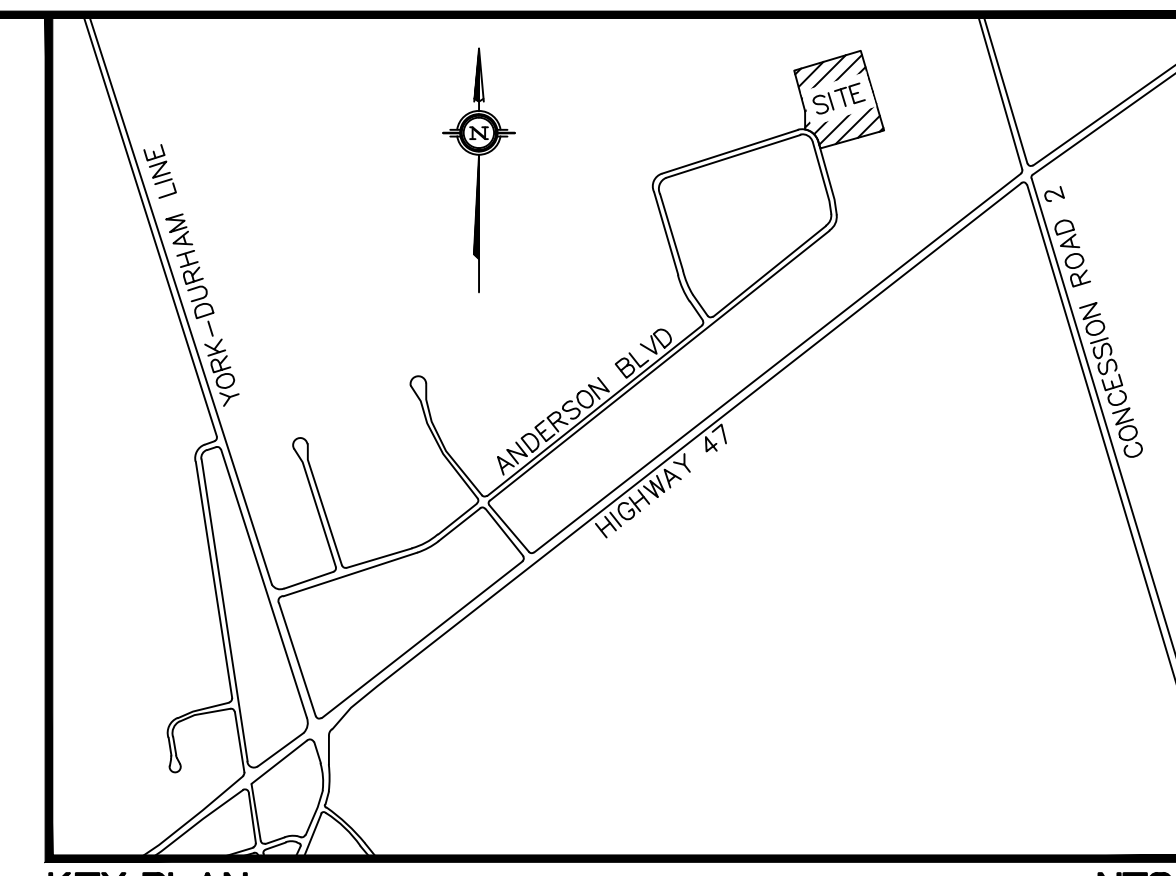


Mar 24, 2021 10:01:00am C:\Users\scott.buckley\BIM_360\WSP_Canada_projects\AMER\Land_Development_Ontario\Project_Files\20M-00392_Uxbridge_Industrial\20M-00392 - Uxbridge Industrial - SS1.dwg - tab:SS1



WATERMAIN DATA TABLE		
MK	#50mm DOMESTIC WATER MAIN	TOP OF PIPE
A	300mm X 50mm DIA. TEE	349.28
B	50mm DIA. GATE VALVE	349.28
C	50mm DIA. GATE VALVE	349.58
D	50mm DIA. PLUG	349.58
E	BEND 50mm COPPER TYPE 'K' WM	349.66
F	BEND 50mm COPPER TYPE 'K' WM	349.93
G	50mm DIA. PLUG	351.02

MK	#200mm FIRE WATER MAIN	TOP OF PIPE
H	300mm X 200mm DIA. TEE	349.26
I	200mm DIA. VALVE	349.26
J	200mm DIA. VALVE	349.36
K	200mm DIA. PLUG	349.36
L	200mm DIA. 22.5° HORIZONTAL BEND	349.45
M	200mm DIA. 22.5° HORIZONTAL BEND	349.72
N	200mm X 150mm DIA. TEE	349.79
O	DEFL. OF FIRE UNDER DOM CONN. PER S-200.070	349.45
P	HYDRANT ASSEMBLY WITH VALVE, FLANGE ELEV. 351.92	349.84
Q	200mm DIA. PLUG	350.80



KEY PLAN NTS

LEGEND

- ⊙ MH EXISTING SANITARY MANHOLE
- ⊙ MH EXISTING BELL MANHOLE
- MH EXISTING UNKNOWN MANHOLE
- ⊙ MH EXISTING STORM MANHOLE
- PROPOSED STORM MANHOLE
- PROPOSED CATCHBASIN
- EXISTING DOUBLE CATCHBASIN
- PROPOSED DOUBLE CATCHBASIN
- — — PROPERTY LIMIT
- ▨ PROPOSED LIGHT-DUTY ASPHALT
- ▨ PROPOSED HEAVY-DUTY ASPHALT
- ▨ PROPOSED CONCRETE SLAB PAVEMENT
- ▨ PROPOSED SODDED AREA
- ▨ PROPOSED STORMWATER MANAGEMENT TANK
- ▨ PROPOSED PRIME SEWAGE SYSTEM ENVELOPE

BENCH MARK:
 ELEVATIONS ARE GEODETIC AND ARE REFERRED TO MTD VERTICAL BENCHMARK NUMBER 00819778477 HAVING AN ORTHOMETRIC ELEVATION OF 312.926 METRES. ELEVATIONS ARE REFERENCED TO THE CANADIAN GEODETIC VERTICAL DATUM OF 1928, 1978 ADJUSTMENT (CGVD-1928:1978).

STEEL ROD WITH BRASS CAP ON THE NORTH SIDE OF HIGHWAY No. 47, 7.6 KM EAST OF THE JUNCTION OF HIGHWAY Nos. 47 & 48 AT RINGWOOD, 1.1 KM EAST OF C.N.R. CROSSING, 1.1 KM WEST OF BLOOMINGTON ROAD AND 15.2 M NORTH OF THE CENTRELINE OF HIGHWAY No. 47. LOCATED 9.6 M EAST OF THE CENTRELINE OF THE GRAVEL FARM LANE, 46 CM SOUTH OF THE NORTH RIGHT-OF-WAY FENCE LINE AND 61 CM WEST OF A BLACK AND YELLOW MARKER POST.



- REFER TO ARCHITECTURAL PLANS FOR SITE PLAN DETAILS
- REFER TO LANDSCAPE PLANS FOR WALKWAY AND LANDSCAPE DETAILS
- REFER TO ELECTRICAL PLANS FOR LIGHTING LAYOUT & DETAILS
- REFER TO DWG. ST-1 FOR STORM DRAINAGE PLAN
- REFER TO DWG. SG-1 FOR SITE GRADING PLAN
- REFER TO DWG. NT-1 FOR GENERAL NOTES AND DT-1 - DT-3 FOR DETAILS

REFERENCES			
No.	DATE	REVISION	BY
1	26/03/21	ISSUED ZONING BY-LAW AMENDMENT	AK
ALL PREVIOUS ISSUES OF THIS DRAWING ARE SUPERSEDED			
Suite 201 - 701 Rossland Road East Whitby, ON L1N 8Y9 www.wsp.com		 t. 905.668.3022 f. 905.668.9443	
45 & 47 ANDERSON BLVD - UXBRIDGE INDUSTRIAL UXBRIDGE			
SITE SERVICING PLAN			
DRAWN BY	LOC.	CONST.	CITY
DATE	JAN 2019		REGION
DESIGN BY	SB	CHKD. BY	AK
DESIGN BY		CHKD. BY	
SCALE		1:500	
20M-00392-		DWG. No. SS-1	