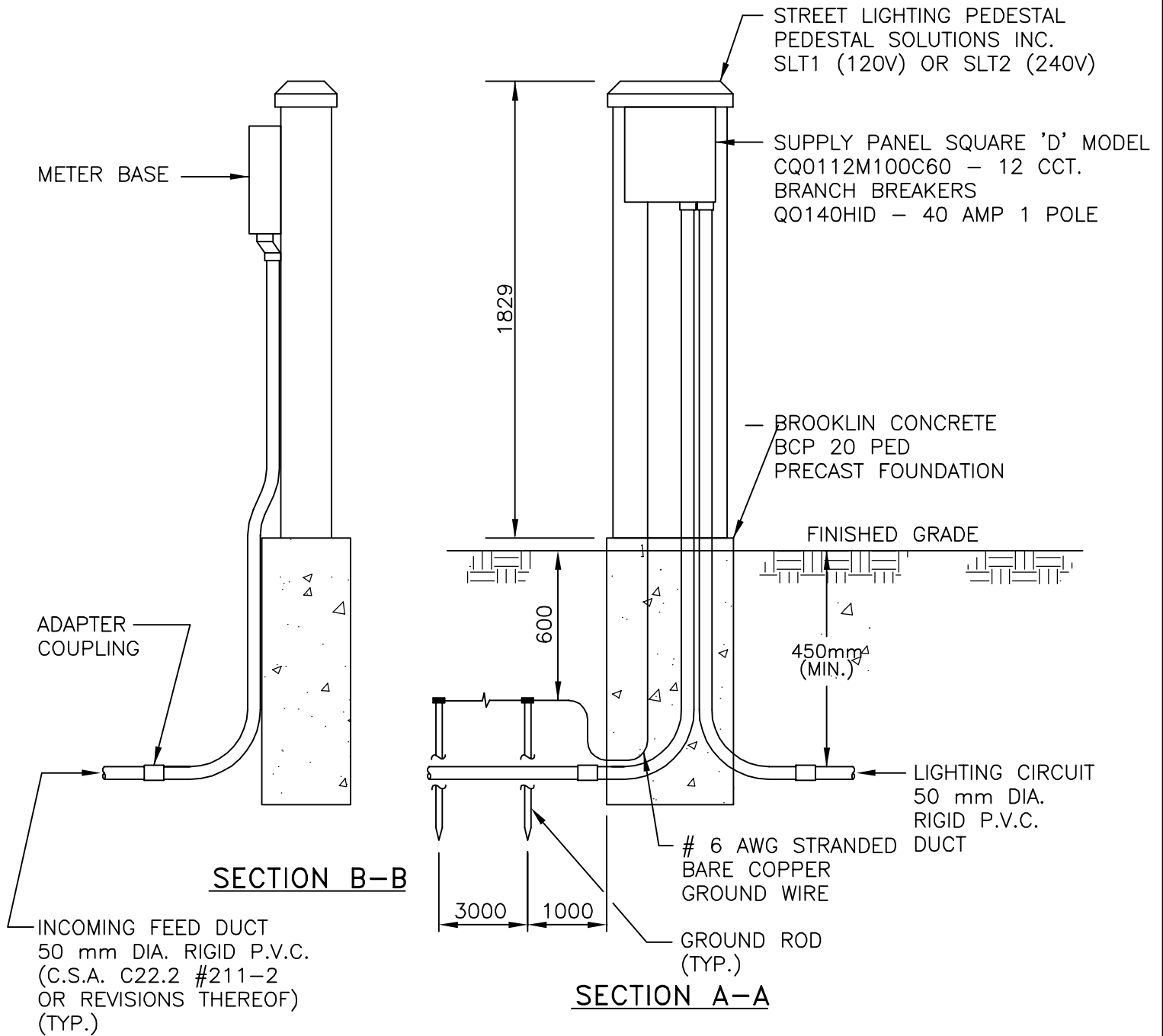
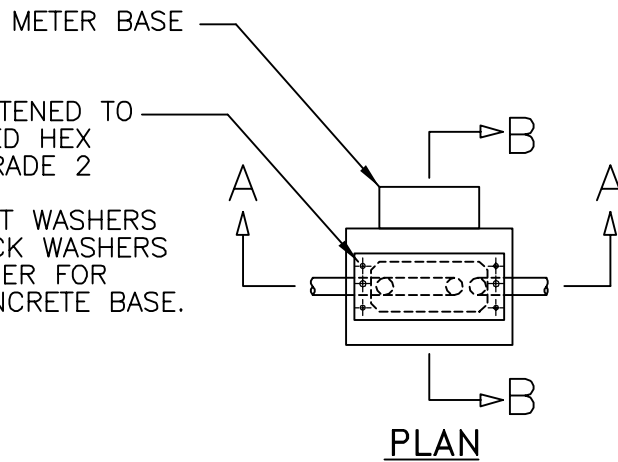


CABINET TO BE FASTENED TO
BASE WITH 4-PLATED HEX
1/2" x 13 x 2" GRADE 2
OR BETTER.
4 PLATED 1/2" FLAT WASHERS
4 PLATED 1/2" LOCK WASHERS
ONE AT EACH CORNER FOR
MOUNTING INTO CONCRETE BASE.



NOTES:

1. ALL DUCTS ARE TO MEET CSA. C22.2 SERIES 75 APPROVAL AND ARE TO BE JOINED USING APPROPRIATE MANUFACTURERS RECOMMENDATIONS.
2. ALL FITTINGS SHALL BE MOULDED OR FABRICATED FROM P.V.C. COMPATIBLE WITH THE PIPE MATERIAL.
3. FINAL CONNECTION OF INCOMING POWER SUPPLY SHALL BE COMPLETED BY LOCAL HYDRO UTILITY.
3. ALL DIMENSIONS ARE IN MILLIMETERS UNLESS NOTED OTHERWISE.

APPROVED	TOWNSHIP OF UXBRIDGE POWER SUPPLY PEDESTAL DETAIL	DATE OF ISSUE MAY 2005
REVISION 2		DRAWING No.
DATE OF REVISION DEC 2017		US-708