

# PLANT LIST

### DECIDUOUS TREES

KEY	QTY.	BOTANICAL NAME	COMMON NAME	CAL. (mm)	HT. (cm)	SPREAD (cm)	ROOTS	REMARKS
CSP60	1	<i>Catalpa speciosa</i>	Western Catalpa	60	-	-	WB	-
COR60	4	<i>Celtis occidentalis</i>	Hickberry	60	-	-	WB	-
MP60	1	<i>Morus 'Profusion'</i>	Profusion Crabapple	60	-	-	WB	-
MR60	1	<i>Morus 'Royalty'</i>	Royalty Crabapple	60	-	-	WB	-

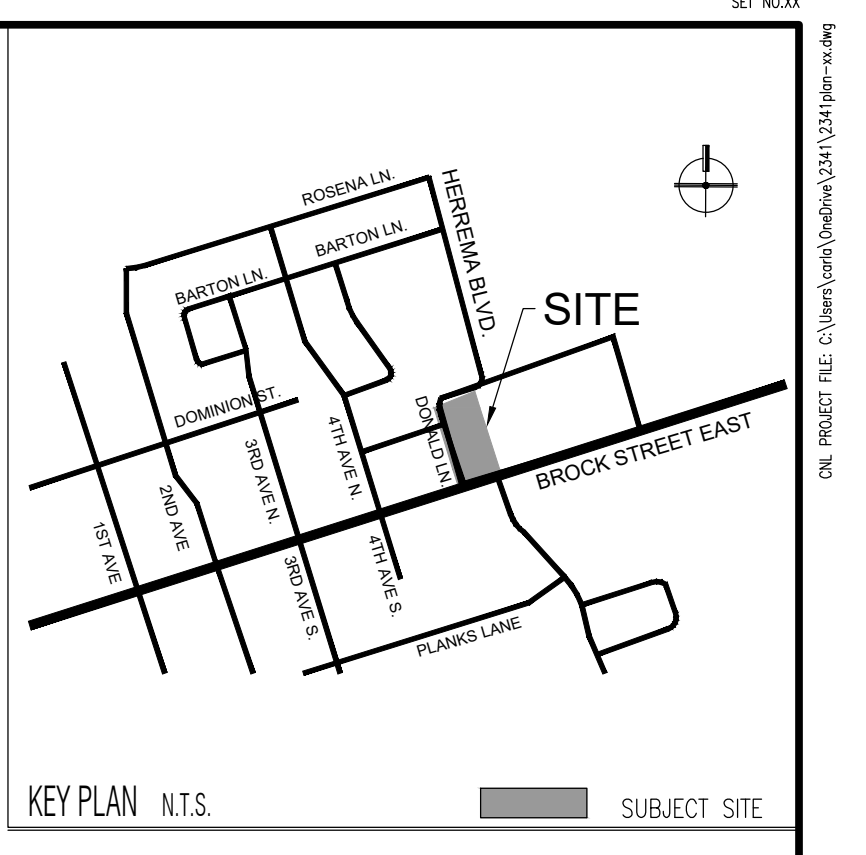
### DECIDUOUS SHRUBS

AG150	9	<i>Acer ginnala</i>	Amur Maple	-	150	100	WB	Clump
AC150	14	<i>Ametancher canadensis</i>	Serviceberry	-	150	100	WB	Clump
AMC50	16	<i>Aronia melanocarpa</i>	Chokeberry	-	50	30	3 gal. pot	-
CR80	14	<i>Cornus racemosa</i>	Gray Dogwood	-	80	40	3 gal. pot	-
CS80	20	<i>Cornus stolonifera</i>	Red-Osier Dogwood	-	80	40	3 gal. pot	-
CS100	3	<i>Cornus stolonifera</i>	Red-Osier Dogwood	-	100	50	3 gal. pot	-
FOR80	12	<i>Forsythia ovata 'Ottawa'</i>	Ottawa Forsythia	-	80	40	3 gal. pot	-
HY100	6	<i>Hamamelis virginiana</i>	Witchhazel	-	100	50	3 gal. pot	-
HP950	26	<i>Hydrangea paniculata 'Bobo'</i>	Bobo Hydrangea	-	50	-	3 gal. pot	-
HPT	16	<i>Hydrangea paniculata 'Tardiva'</i>	Late Peegee Hydrangea	-	-	-	3 gal. pot	-
KAT100	15	<i>Kolkwitzia amabilis</i>	Beauty Bush	-	100	50	7 gal. pot	-
PF650	22	<i>Potentilla fruticosa 'Goldfinger'</i>	Goldfinger Potentilla	-	50	30	3 gal. pot	-
RA50	9	<i>Rhus aromatica</i>	Fragrant Sumac	-	50	50	3 gal. pot	-
RAL80	20	<i>Ribes alpinum</i>	Alpine Currant	-	80	30	3 gal. pot	-
RR60	42	<i>Rosa rugosa</i>	Rugosa Rose	-	60	-	3 gal. pot	-
SC100	6	<i>Sambucus canadensis</i>	Elderberry	-	100	50	3 gal. pot	-
SB450	20	<i>Spiraea x bumalda 'Anthony Waterer'</i>	Anthony Waterer Spiraea	-	50	30	3 gal. pot	-
SB50	20	<i>Spiraea x bumalda 'Goldflame'</i>	Goldflame Spiraea	-	50	30	3 gal. pot	-
SAL50	30	<i>Symphoricarpos albus</i>	Snowberry	-	50	30	3 gal. pot	-
SVL100	11	<i>Syringa vulgaris 'Ludwig Spaeth'</i>	Ludwig Spaeth Lilac	-	100	50	3 gal. pot	-
SVN100	10	<i>Syringa vulgaris 'Madame Lemoine'</i>	Madame Lemoine Lilac	-	100	50	3 gal. pot	-
WF80	9	<i>Weigela florida 'Bristol Snowflake'</i>	Bristol Snowflake Weigela	-	80	40	3 gal. pot	-

### CONIFEROUS SHRUBS

JCB50	18	<i>Juniperus conferta 'Blue Pacific'</i>	Blue Pacific Juniper	-	-	50	CG / FP	-
JCS50	24	<i>Juniperus chinensis v. sargentii 'Glauco'</i>	Blue Sargent Juniper	-	-	50	CG / FP	-
JSM50	70	<i>Juniperus sabina 'Monard'</i>	Monard Juniper	-	-	50	CG / FP	-
TMC60	47	<i>Taxus x media 'Densiformis'</i>	Dense Yew	-	-	50	CG / FP	-

B&B - BALLED & BURLAPPED WB - WIRE BASKET CG - CONTAINER GROWN FP - FIELD POTTED pot - POT GROWN



### LEGEND

- PROPERTY LINE
- PRIVACY WOOD FENCE
- CONCRETE PAWING
- SOD
- MULCH
- CONCRETE PAVERS
- PLANT SPECIES
- DECIDUOUS TREE PLANTING SIZE
- STREET TREE PLACEMENT REFER TO CNL PROJECT #2217
- REVISED STREET TREE PLACEMENT TREES TO BE REMOVED/NOT PLANTED
- DECIDUOUS SHRUBS PLANTING
- CONIFEROUS SHRUBS PLANTING

Base Information  
 Site Plan information received in digital format from Keith Loffer McAlene Architects, Project No 2028, and received December 22, 2020.

No	Revision	By	Yr	Mo	Da
x	xx		xx	xx	xx

All drawings and designs are the property of Cosburn Nauboris Limited and may not be used or reproduced without permission. This drawing must not be scaled.

Invalid Unless Signed Original

**cosburn nauboris LTD**  
 landscape architects  
 20 crown street dr suite 2 markham, on l3r 9v9  
 1 905 940 4443  
 cosburnnauboris.ca

**BLOCK 8 CONDOMINIUM RESIDENCES**  
 EVENDALE DEVELOPMENTS LTD,  
 TOWNSHIP OF UXBRIDGE

**LANDSCAPE PLAN**

Drawn by	CMO	Scale	1:200
Checked by	PHC	Plot Date	2021-01-12
Approved by	PHC	Project	2341

**L1**  
 Drawing No.