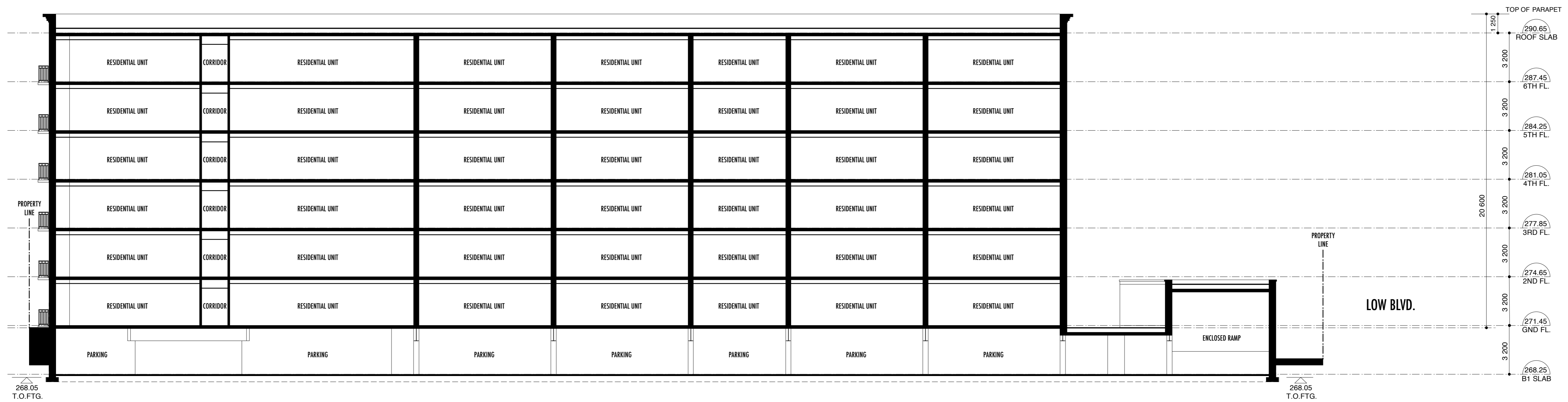
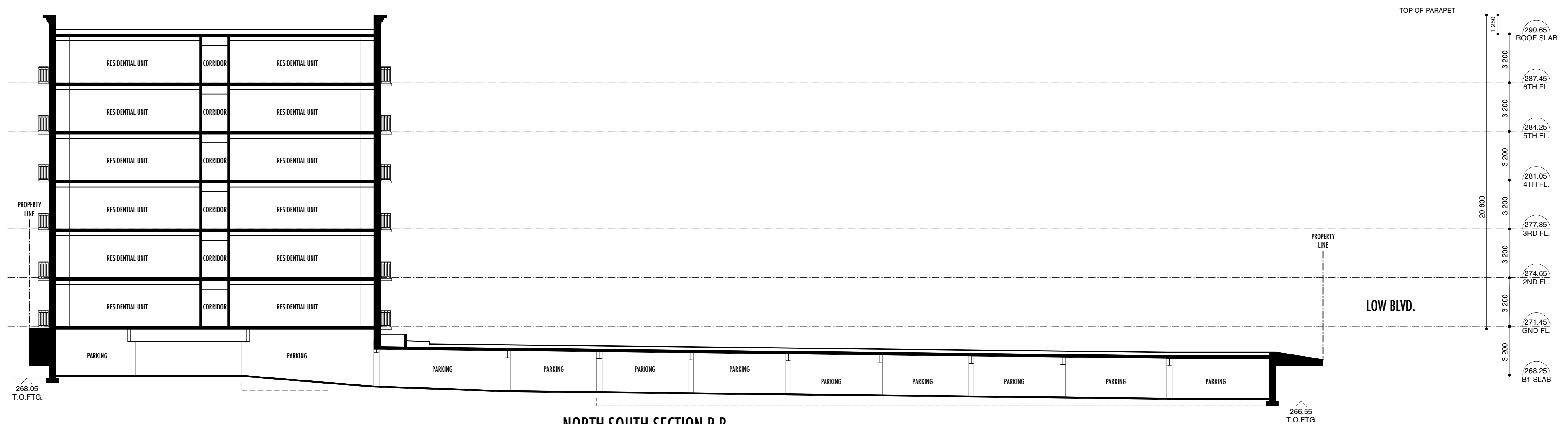


BROCK STREET E.

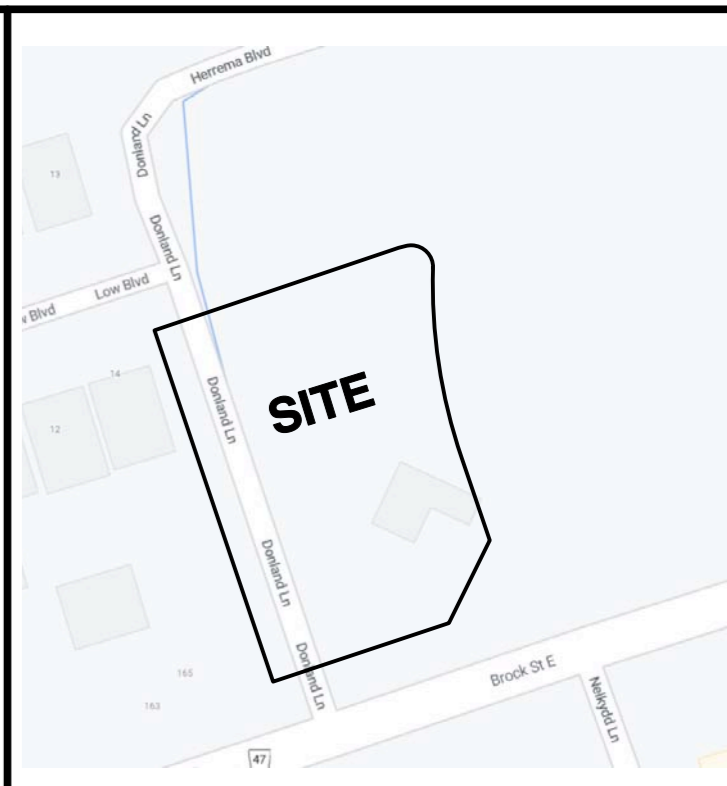


NORTH-SOUTH SECTION A-A

BROCK STREET E.



NORTH-SOUTH SECTION B-B



Key Plan

Issue	Date	Description	By
01	DEC 22/20	OWNER REVIEW & COORDINATION	J.M.

Rev.	Date	Description	By
01	N/A	N/A	J.M.

ARCHITECT'S INSTRUCTIONS:
 THE CONTRACTOR MUST CHECK AND VERIFY ALL DRAWING DIMENSIONS ON THE SITE BEFORE AND DURING CONSTRUCTION, AND REPORT TO THE ARCHITECT ANY DISCREPANCIES PRIOR TO COMMENCING WORK.
 DRAWINGS ARE NOT TO BE SCALED FOR PURPOSES OF CONSTRUCTION.
 ALL CONSTRUCTION DOCUMENTS ISSUED BY THE ARCHITECT ARE THE COPYRIGHT OF THE ARCHITECT AND MUST BE RETURNED UPON REQUEST.
 REPRODUCTION OF THE CONSTRUCTION DOCUMENTS IN PART OR IN WHOLE IS FORBIDDEN WITHOUT THE ARCHITECT'S WRITTEN PERMISSION.

keith loffler mc Alpine architects
 18 ST. MARY STREET, SUITE 402, TORONTO, ONTARIO, M4Y 1P9 T (416) 944 1942 F (416) 944 6248



Professional Certification		
OWNER REVIEW & COORDINATION		
Issued for	1 : 150	
Issue date	Scale	
2028	J.M.	J.M.
Project no.	Drawn by	Checked by

Block 8
 Condominium Residences
 Brock St. E. & Herrema Blvd., Uxbridge, Ontario
 OWNER: Evendale Developments, 905 904 2261

Site Section A-A
Site Section B-B

Drawing Title
A301