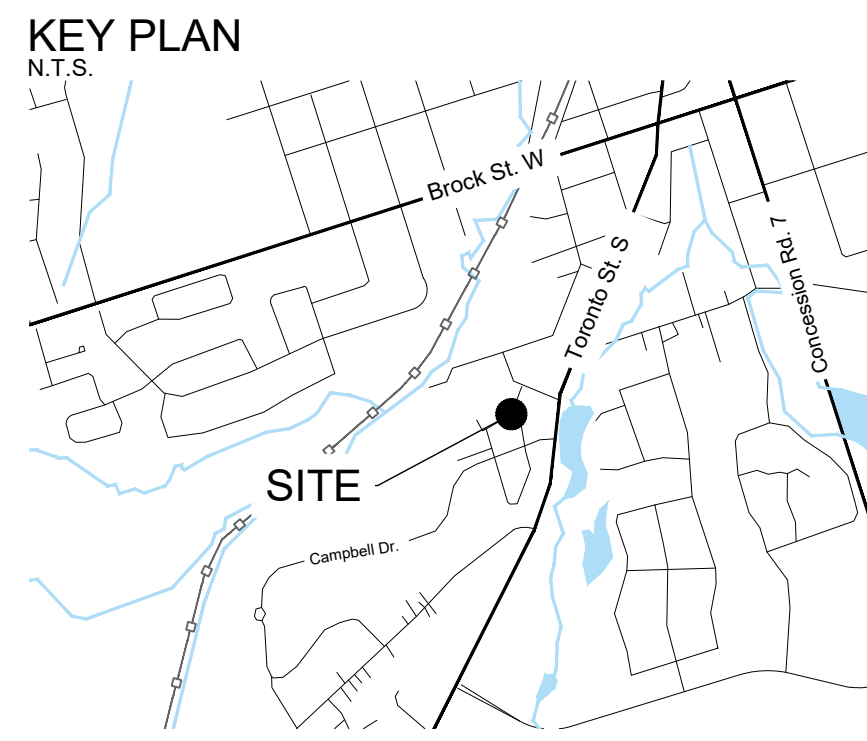
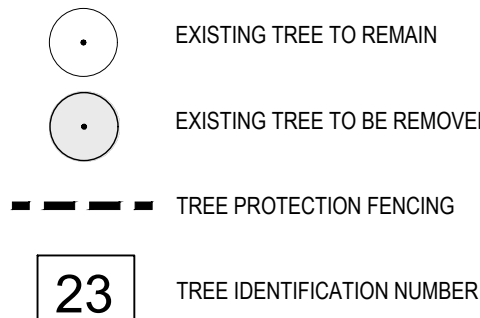


- GENERAL NOTES:
1. DRAWINGS NOT TO BE USED FOR CONSTRUCTION UNLESS AUTHORIZED BY THE LANDSCAPE ARCHITECT
 2. CONTRACTOR SHALL REPORT ANY DISCREPANCIES BETWEEN THE DRAWINGS AND SITE CONDITIONS PRIOR TO COMMENCEMENT OF THE WORK
 3. ALL UTILITY LOCATES ARE THE RESPONSIBILITY OF THE CONTRACTOR. HAND IS: WITHIN THE LIMITS RECOMMENDED BY THE SERVICE UTILITY. UTILITY CONFLICTS WITH PROPOSED TREE LOCATIONS MUST BE REPORTED IMMEDIATELY TO THE LANDSCAPE ARCHITECT
 4. BASE DRAWING PROVIDED BY DIAMOND SCHMITT ARCHITECTS
 5. VEGETATION INVENTORY BY GSP GROUP INC.
 6. LANDSCAPE DRAWINGS SHOW ENGINEERING INFORMATION FOR DESIGN PURPOSES ONLY. DO NOT CONSTRUCT ENGINEERING WORKS FROM THESE DRAWINGS

ISSUED	NO.	DATE	DESCRIPTION
	1	2024-04-01	Issued for Schematic Design Control
	2	2024-04-26	Issued for MCH Draft Submission
	3	2024-05-02	Issued for Stage 2.1 Block Schematics
	4	2024-07-12	Issued for Coordination
	5	2024-07-31	Issued for SOW/DO
	6	2024-09-19	Issued for Site Plan Approval



LEGEND



Legend

Health and Structural Condition

E - Excellent
G - No defects, well-developed crown
F - Minor defects or symptoms of disease
P - Major defects or symptoms of disease
Dead

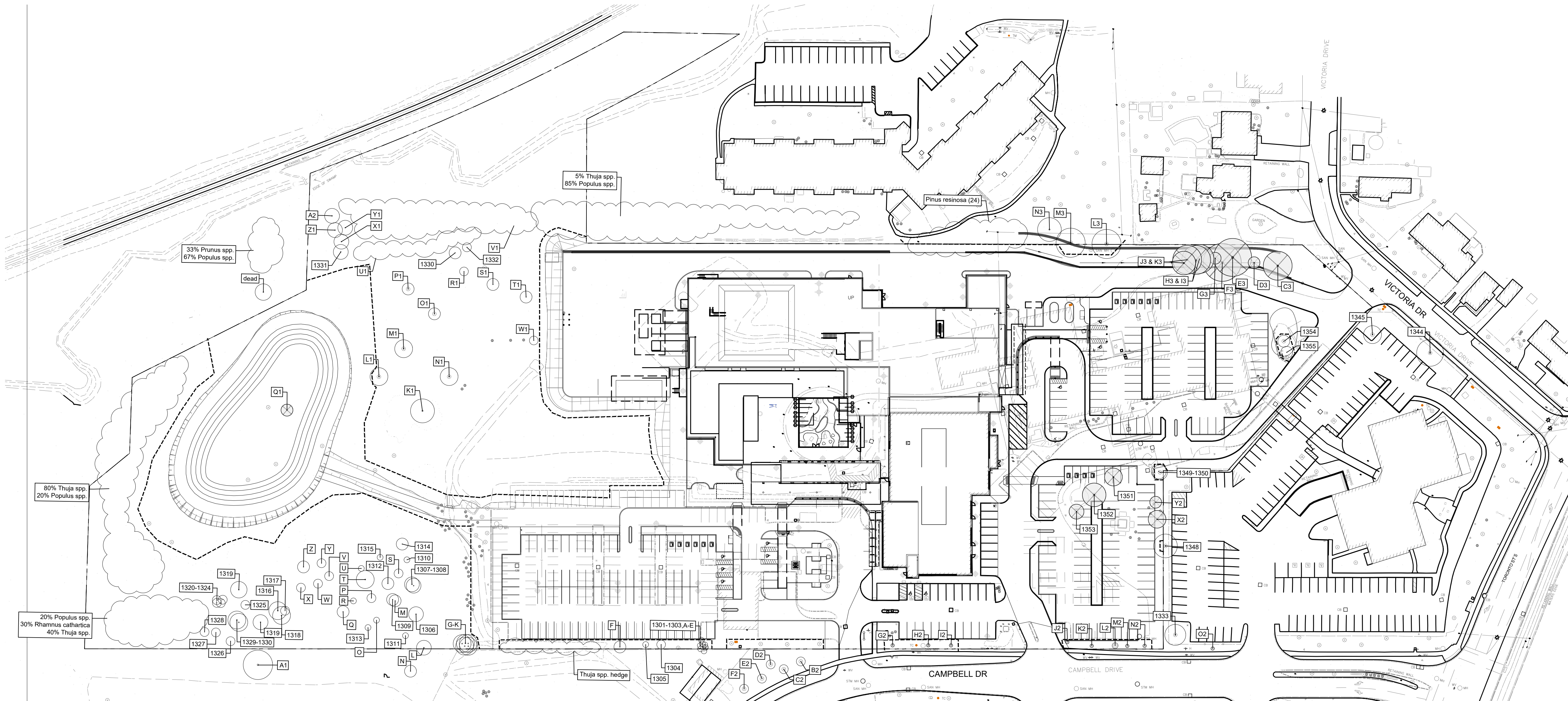
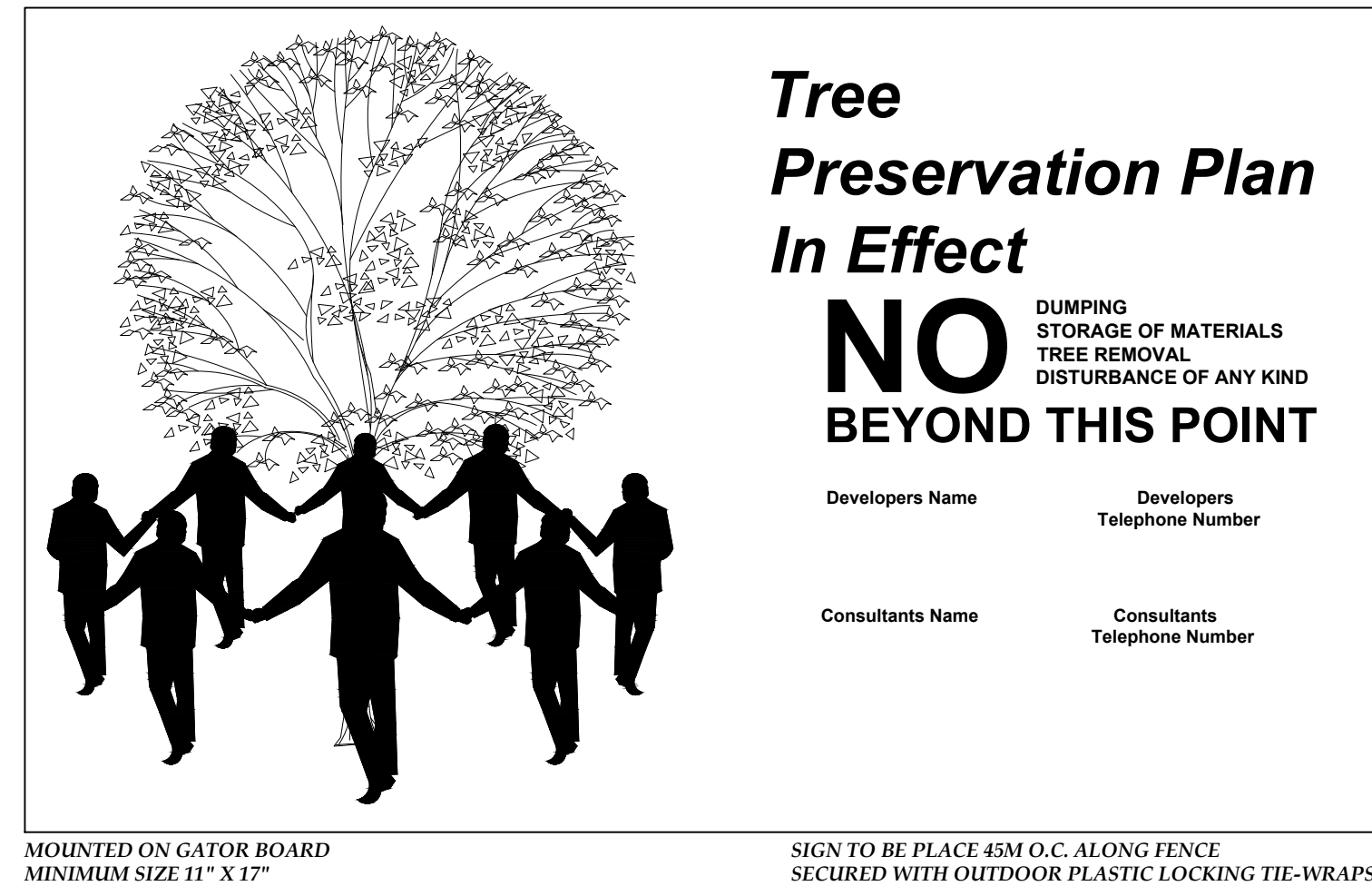
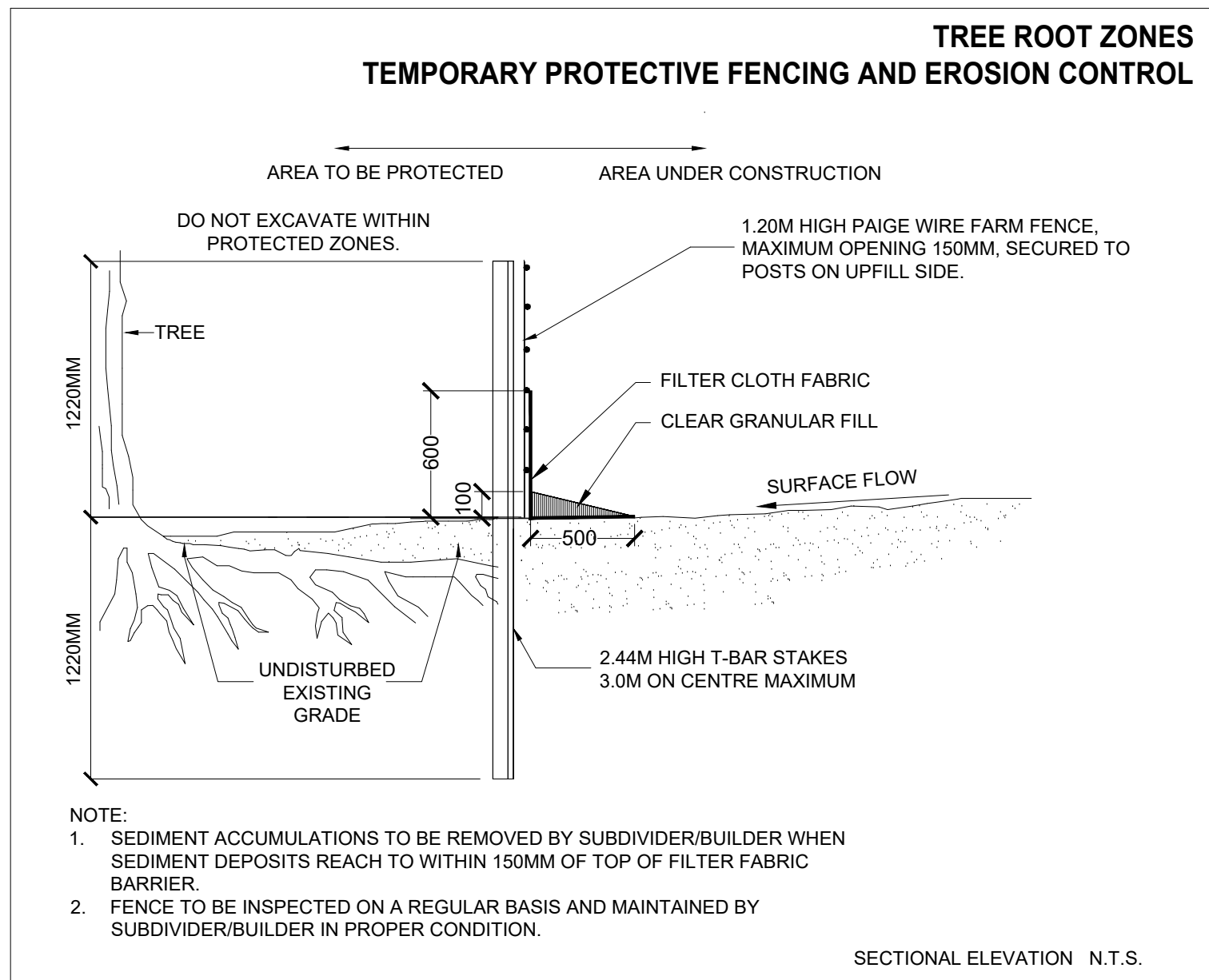
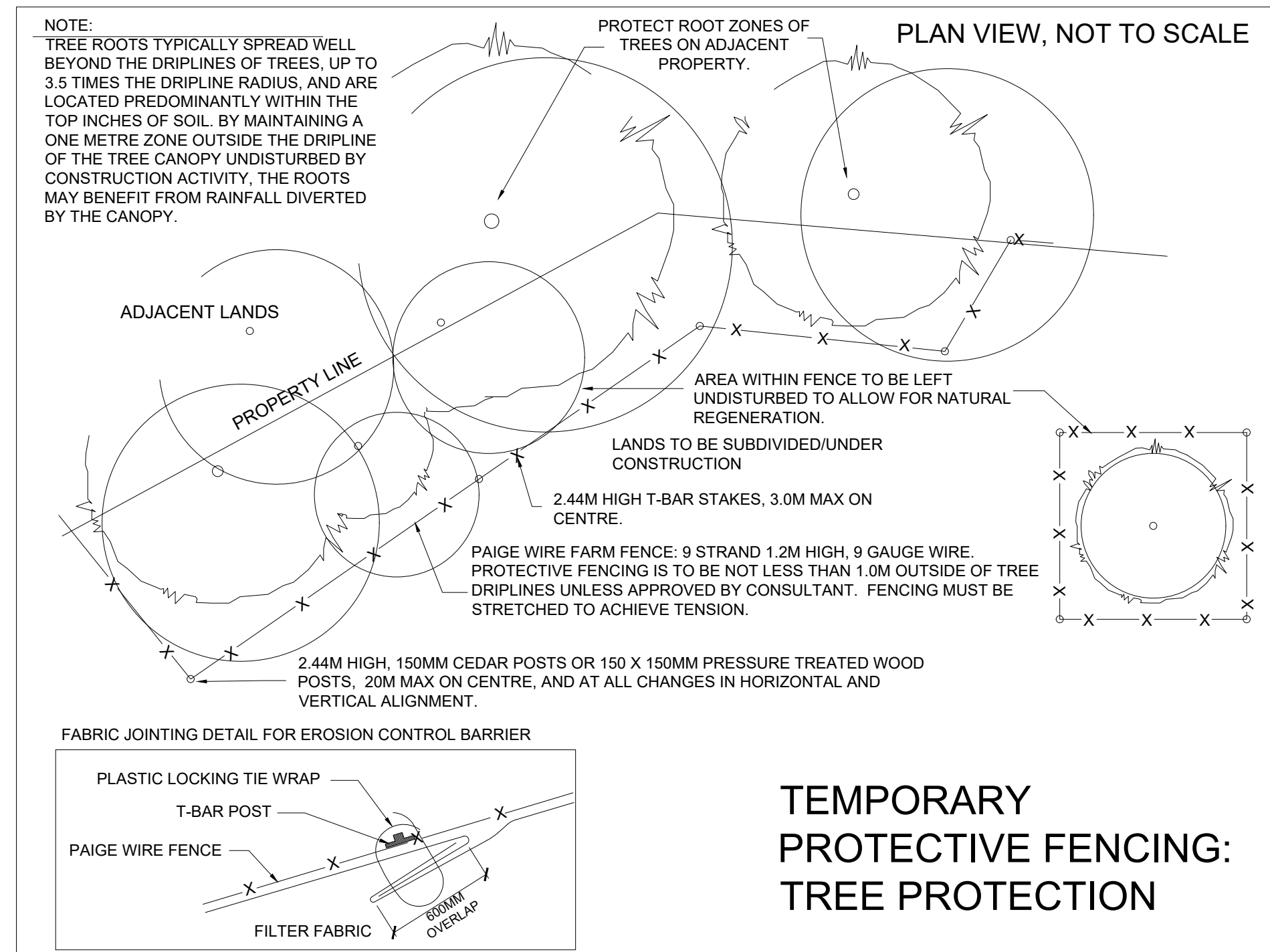
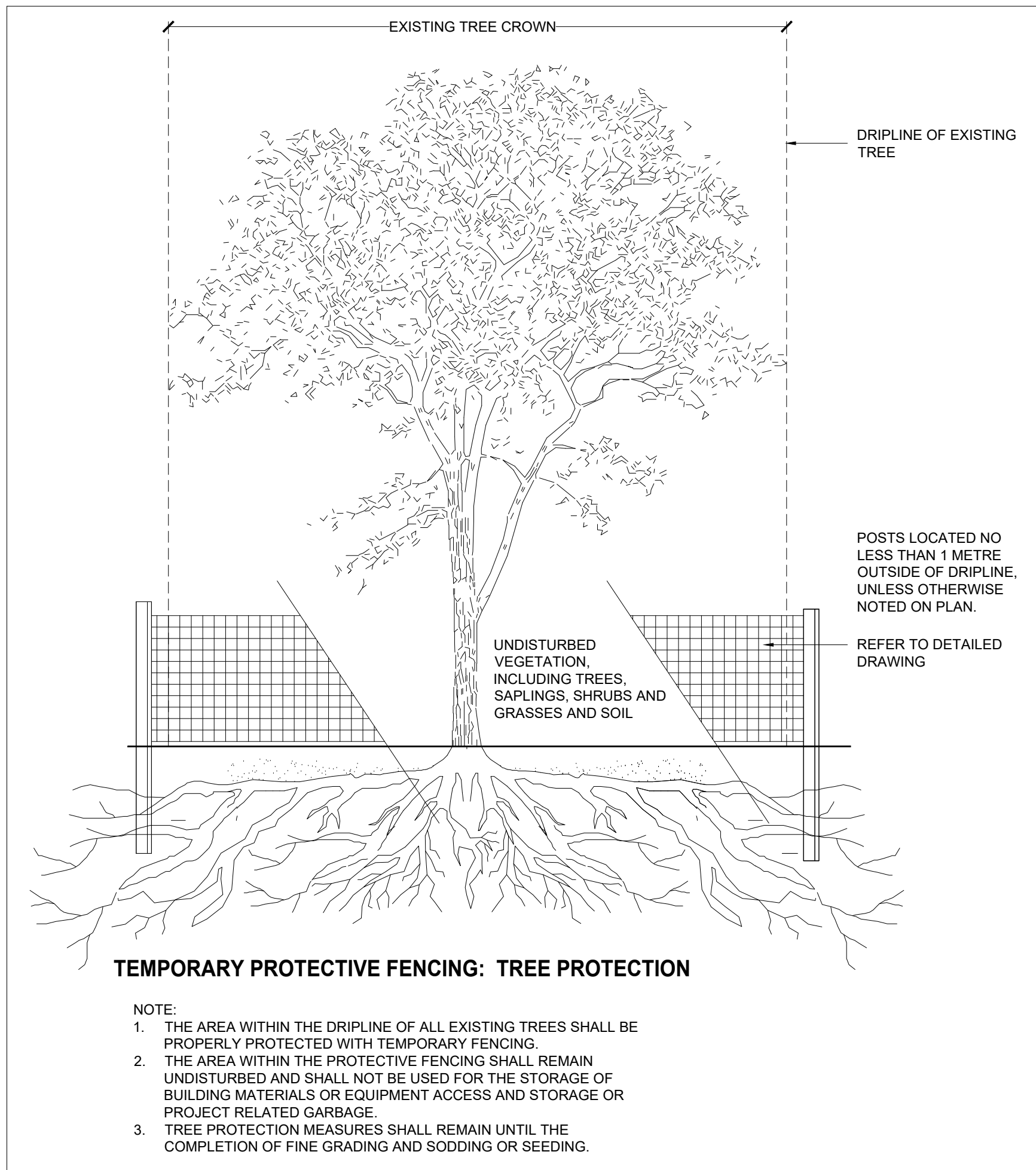
Recommended Action

P - Protect, monitor and remain.
R - Remove
Rc - Remove due to construction
+ - Remove with municipal approval
** - Remove with neighbours approval
T - Transplant

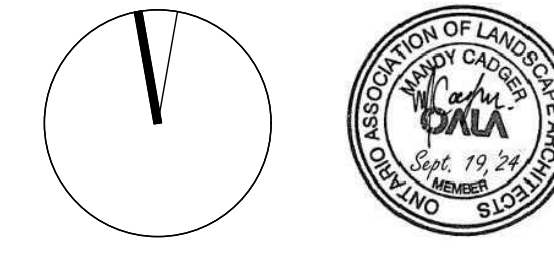
Tree Inventory

Species of significant size 100mm DBH or greater

Tree Inventory											
Site Date: September 26 2023 Field Personnel: GSP Group- Summer Scott Tree locations approximated in field - no survey provided # = tagged by others											
Tree No.	Botanical Name	Common Name	Stems	DBH (cm)	Dripline Radius (m)	Location			Health Condition	Structure Condition	Comments
						Municipal Property	Shared	Adjacent Property (6m to PL)			
1301	Populus spp.	Poplar spp.	1	12							
1302	Populus spp.	Poplar spp.	1	14	1			x	F	F	P
1303	Populus spp.	Poplar spp.	1	10	1			x	F	F	P
1304	Populus spp.	Poplar spp.	1	20.5	1.5			x	F	F	P
1305	Populus spp.	Poplar spp.	1	17	1			x	F	F	P
1306	Thuja spp.	Cedar spp.	1	39	2.5	x			G	G	P
1307	Thuja spp.	Cedar spp.	1	23	2.5	x			G	G	P
1308	Thuja spp.	Cedar spp.	1	22.5	2.5	x			G	G	P
1309	Thuja spp.	Cedar spp.	1	25	2	x			G	G	P
1310	Thuja spp.	Cedar spp.	1	33	1	x			G	G	P
1311	Thuja spp.	Cedar spp.	1	25	1	x			G	G	P
1312	Thuja spp.	Cedar spp.	1	45	2	x			F	F	3 leaders
1313	Thuja spp.	Cedar spp.	1	20	1	x			D	P	Dead
1314	Acer negundo	Manitoba Maple	1	11	2	x			F	G	P
1315	Prunus serotina	Black Cherry	1	13.5	1	x			G	G	P
1316	Thuja spp.	Cedar spp.	1	36	3	x			F	F	P
1317	Thuja spp.	Cedar spp.	1	16	1.5	x			P	F	P
1318	Thuja spp.	Cedar spp.	1	40	3	x			D	P	Dead
1319	Thuja spp.	Cedar spp.	1	40	2.5	x			G	G	P
1320	Thuja spp.	Cedar spp.	1	10.5	0.5	x			G	G	P
1321	Thuja spp.	Cedar spp.	1	10.5	0.5	x			P	P	Dead
1322	Thuja spp.	Cedar spp.	1	28.5	3	x			G	G	P
1323	Thuja spp.	Cedar spp.	1	26	2	x			G	G	P
1324	Thuja spp.	Cedar spp.	1	15	1.5	x			F	F	P
1325	Rhamnus spp.	Buckthorn	1	10	1.5	x			F	F	P
1326	Rhamnus spp.	Buckthorn	1	15	1.5	x			P	P	P
1327	Rhamnus spp.	Buckthorn	1	15	1.5	x			P	P	P
1328	Rhamnus spp.	Buckthorn	1	15	1.5	x			P	P	P
1329	Thuja spp.	Cedar spp.	1	23	3	x			F	F	P
1330	Rhamnus spp.	Buckthorn	1	20	3	x			F	F	P
1330	Populus tremuloides	Trembling aspen	1	14.5	2	x			G	G	Slight Lean
1331	Thuja spp.	Cedar spp.	1	40	2.5	x			G	G	P
1332	Populus spp.	Poplar spp.	1	16	1.5	x			G	G	P
1333	Tilia spp.	Linden spp.	1	41.5	3.5	x			F	G	P
1344	Acer platanoides	Norway Maples	1	38.5	4.5	x			G	F	Crack down side, slight lean
1345	Picea glauca	White Spruce	1	39	3	x			F	F	Some dead branches
1348	Tilia cordata	Linden	1	4	4	x			G	F	Slight lean towards fence
1349	Tilia cordata	Linden	1	32	2.5	x			G	F	P
1350	Tilia cordata	Linden	1	41	2.5	x			P	x	P
1351	Picea pungens	Blue Spruce	1	45.5	3	x			F	F	Some dead branches
1352	Tilia cordata	Linden	1	44.5	4	x			G	G	P
1353	Tilia cordata	Linden	1	30.5	2.5	x			G	G	P
1354	Acer negundo	Manitoba Maple	1	22.5	2	x			F	P	Leaning
1355	Acer negundo	Manitoba Maple	1	16.5	2	x			F	P	Leaning
A	Populus spp.	Poplar spp.	1	21	1.5	x			F	G	P
B	Populus spp.	Poplar spp.	1	15	1	x			F	F	P
C	Populus spp.	Poplar spp.	1	19	1	x			F	F	P
D	Populus spp.	Poplar spp.	1	18	1	x			F	F	P
E	Populus spp.	Poplar spp.	1	19	1	x			F	F	P
F	Rhamnus spp.	Buckthorn spp.	3	25 to 10 (2)	2	x			F	F	Vines
G	Thuja spp.	Cedar spp.	1	28	2.5	x			G	G	P
H	Thuja spp.	Cedar spp.	1	31	3	x			G	G	P
I	Thuja spp.	Cedar spp.	1	48	3	x			F	G	Large hole in trunk
J	Thuja spp.	Cedar spp.	1	44	3	x			G	G	P
K	Thuja spp.	Cedar spp.	1	35	3	x			G	G	P
L	Thuja spp.	Cedar spp.	1	25	2.5	x			G	G	P
M	Thuja spp.	Cedar spp.	1	23	2	x			G	G	P
N	Acer platanoides	Norway Maple	1	23	2	x			F	F	P
O	Picea glauca	White Spruce	1	46	5	x			G	G	P
P	Thuja spp.	Cedar spp.	3	30	1.5	x			F	F	P
Q	Thuja spp.	Cedar spp.	2	34	2	x			F	F	P
R	Thuja spp.	Cedar spp.	1	41	1	x			P	P	Large Lean
S	Rhamnus spp.	Buckthorn spp.	8	8x10	1.5	x			F	F	P
T	Populus spp.	Poplar spp.	7	45,6x40	3	x			G	F	P
U	Populus spp.	Poplar spp.	4	15,10,8.5	1	x			F	P	Large Lean
V	Thuja spp.	Cedar spp.	2	20	1	x			F	F	P
W	Thuja spp.	Cedar spp.	1	12	0.5	x			P	P	Dead
X	Populus spp.	Poplar spp.	6	35,33,33	1.5	x			F	F	P
Y	Populus spp.	Poplar spp.	8	35	1.5	x			F	P	P
Z	Juglans nigra	Black Walnut	1	28	2	x			F	G	P
A1	Pinus sylvestris	Scots Pine	1	60	5	x			G	G	P
K1	Pinus sylvestris	Scots Pine	1	30	4	x			G	G	R
L1	Pinus sylvestris	Scots Pine	1	25	3	x			G	G	R
M1	Pinus sylvestris	Scots Pine	1	22	3	x			G	G	R
N1	Pinus sylvestris	Scots Pine	1	30	3	x			G	G	R
O1	Pinus sylvestris	Scots Pine	1	25	2	x			G	G	R
P1	Pinus sylvestris	Scots Pine	1	25	2	x			G	G	R
Q1	Pinus sylvestris	Scots Pine	1	25	2	x			G	G	R
R1	Populus tremuloides	Trembling Aspen	1	22	1.5	x			G	G	R
S1	Pinus sylvestris	Scots Pine	1	20	2	x			G	G	R
T1	Pinus resinosa	Red Pine	1	30	2	x			G	G	R
U1	Populus tremuloides	Trembling Aspen Cluster (20 trees)		45 to 10	2	x			G	G	P
V1	Pinus spp.	White Pine/Red Pines (30 Trees)		45 to 20	1	x			G	G	P
W1	Prunus serotina	Black Cherry (20 trees)		15 to 8	1.5	x			G	F	P
X1	Thuja spp.	Cedar spp.	1	45	2.5	x			G	G	P
Y1	Thuja spp.	Cedar spp.	1	42	2.5	x			G	G	P
Z1	Thuja spp.	Cedar spp.	1	40	2.5	x			G	G	P
A2	Thuja spp.	Cedar spp.	1	38	2.5	x			G	G	P
B2	Populus spp.	Poplar spp.	1	32.5	1.5	x			G	G	P
C2	Picea pungens	Blue Spruce	1	32	1.5	x			G	G	P
D2	Picea pungens	Blue Spruce	1	32	1.5	x			G	G	P
E2	Picea pungens	Blue Spruce	1	35	1.5	x			F	F	Dead Branches
F2	Picea pungens	Blue Spruce	1	36	1.5	x			P	F	Dead Branches
G2	Ulmus spp.	Elm spp.	1	4.5	0.5	x			F	F	P
H2	Ulmus spp.	Elm spp.	1	4.5	0.5	x			F	F	P
I2	Ulmus spp.	Elm spp.	1	4.5	0.5	x			F	F	P
J2	Ulmus spp.	Elm spp.	1	4	0.5	x			P	F	P
K2	Acer spp.	Maple spp.	1	31	0.5	x			P	P	Dead
L2	Ulmus spp.	Elm spp.	1	3	0.5	x			P	P	P
M2	Acer	Maple spp.	1	6	0.5	x			P	P	Dead
N2	Prunus spp.	Cherry spp.	1	4	0.5	x			P	P	Dead
O2	Prunus spp.	Cherry spp.	1	6	0.5	x			P	P	Dead
P2	Pinus resinosa	Red Pine	4	32 to 40	3	x			F	F	Some dead branches
Q2	Thuja spp.	Cedar spp.	2	25 to 20	2	x			F	F	P
G3	Acer platanoides	Norway Maples (11 trees)		30 to 20	5	x			G	F	R
D3	Thuja spp.	Cedar hedge (19 trees)		20 to 10	2	x			F	F	R
E3	Acer spp.	Maple spp.	4	40 to 80	6.5	x			F	F	Large leans
F3	Acer platanoides	Norway Maple	1	65	6.5	x			F	F	P
G3	Thuja spp.	Cedar hedge (15 trees)		20 to 10	2	x			P	P	Dead
H3	Acer saccharinum	Silver Maple	1	50	5	x			F	F	R
I3	Acer saccharinum	Silver Maple	1	45	5	x			F	F	R
J3	Fraxinus spp.	Ash spp.	1	45	5	x			F	F	R
K3	Fraxinus spp.	Ash spp. (10 Trees)		40 to 15	4	x			G	F	P
L3	Acer saccharinum	Silver Maple	1	50	5	x			G	G	P
M3	Acer saccharinum	Silver Maple	1	65	5	x			G	G	P
N3	Acer saccharinum	Silver Maple	1	54	4	x			F	F	P
O3	Pinus resinosa	Red Pines (24 Trees)		25 to 22	2.5	x			G-F	G	P



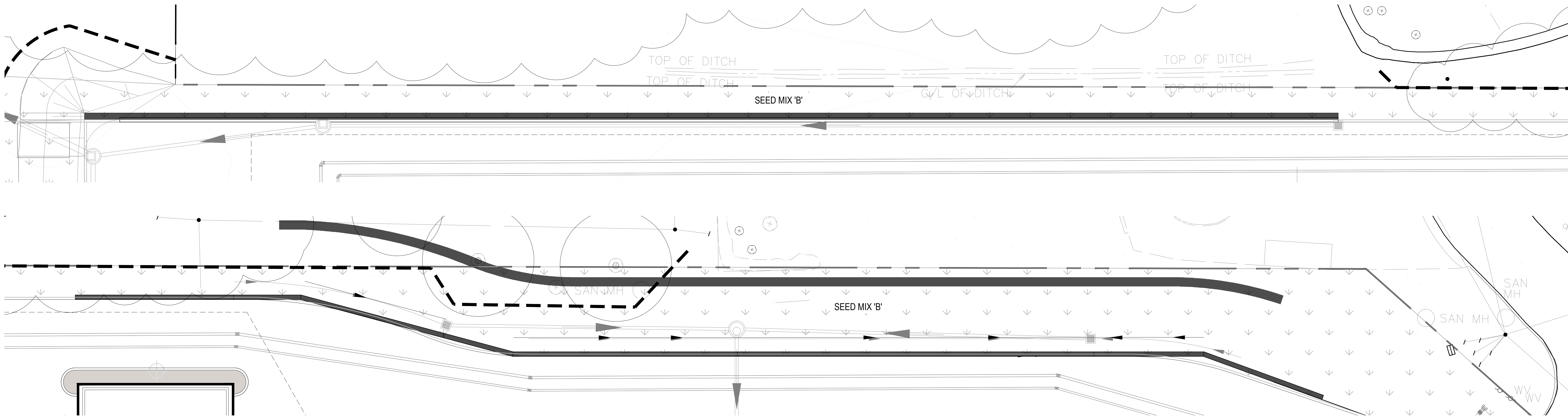
NOT FOR
CONSTRUCTION



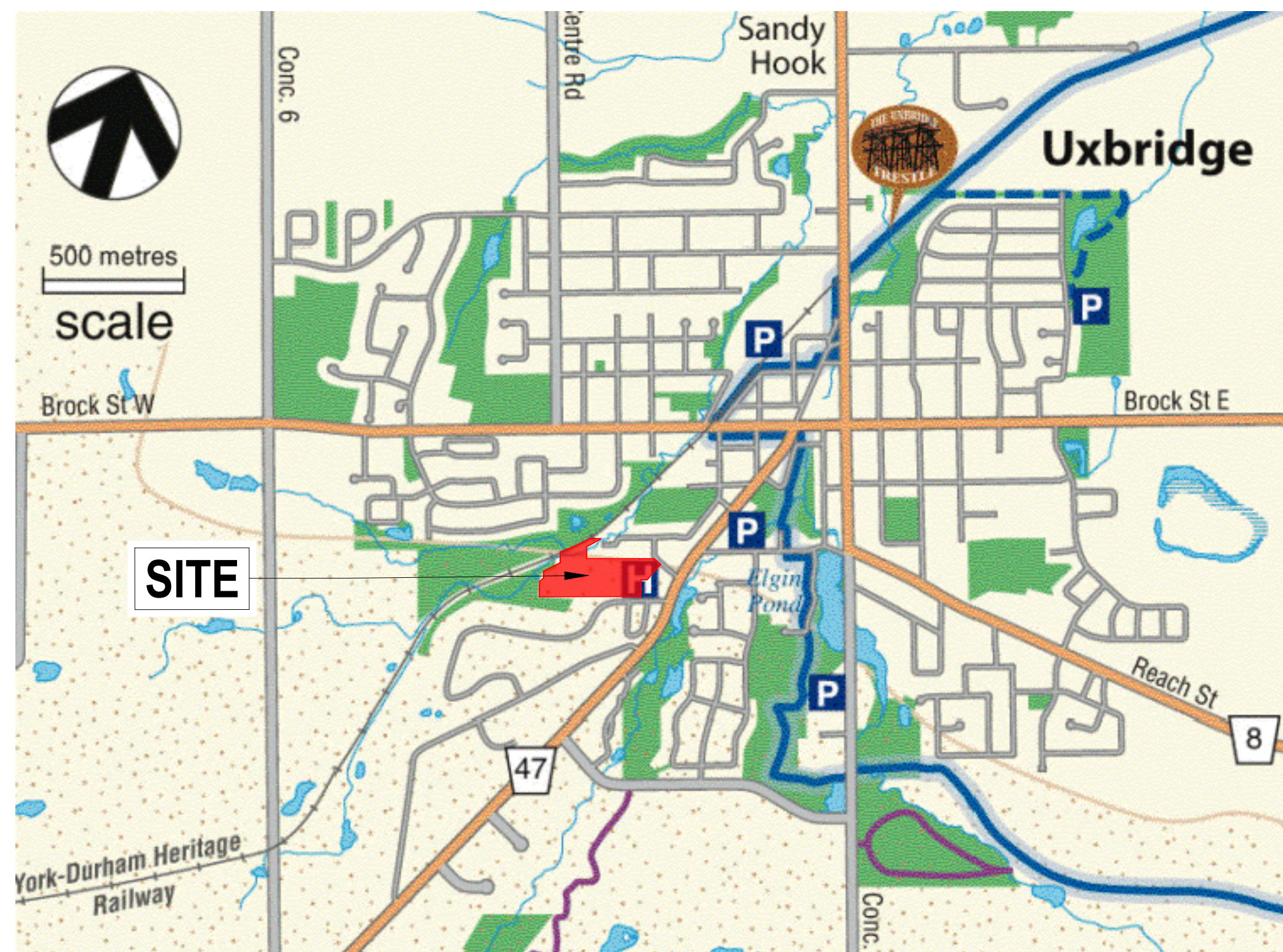
CONTRACTOR MUST CHECK & VERIFY ALL DIMENSIONS ON THE JOB.
DO NOT SCALE DRAWINGS.
ALL DRAWINGS, SPECIFICATIONS AND RELATED DOCUMENTS ARE THE COPYRIGHT PROPERTY OF THE ARCHITECT AND MUST BE RETURNED UPON REQUEST. REPRODUCTION OF DRAWINGS, SPECIFICATIONS AND RELATED DOCUMENTS IN PART OR IN WHOLE IS FORBIDDEN WITHOUT THE WRITTEN PERMISSION OF THE ARCHITECT.
THIS DRAWING IS NOT TO BE USED FOR CONSTRUCTION UNLESS SIGNED BY THE ARCHITECT.



Uxbridge Hospital
PROJECT NO.: 23175



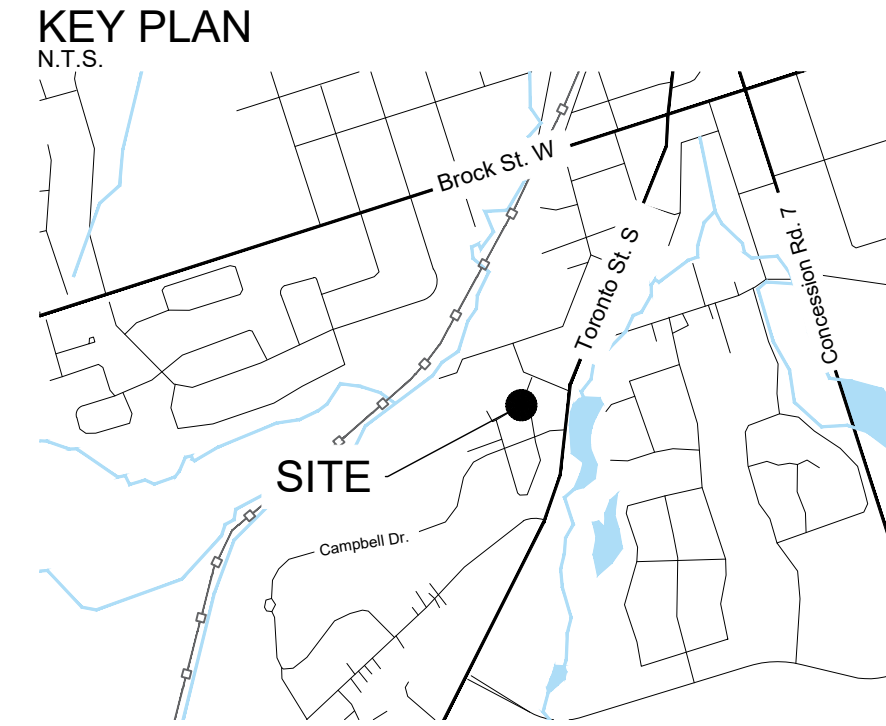
NORTH WALL ENLARGEMENT PLAN



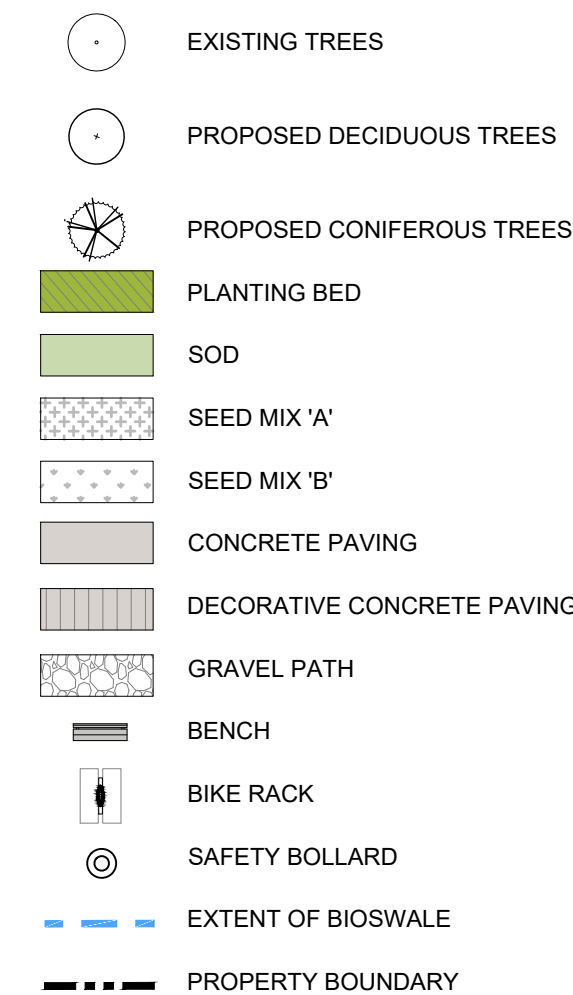
TOWN OF UXBRIDGE TRAIL SYSTEM - ACTIVE TRANSPORTATION PLAN



NOTE:
PEDESTRIAN CIRCULATION PLAN SHOWING THE EXISTING TRAILS ADJACENT TO THE SITE. NO IMPACTS TO EXISTING TRAILS DURING OR POST CONSTRUCTION. ON-SITE PEDESTRIAN CIRCULATION CONNECTS TO LOCAL SIDEWALKS AT STREET FRONTAGES.



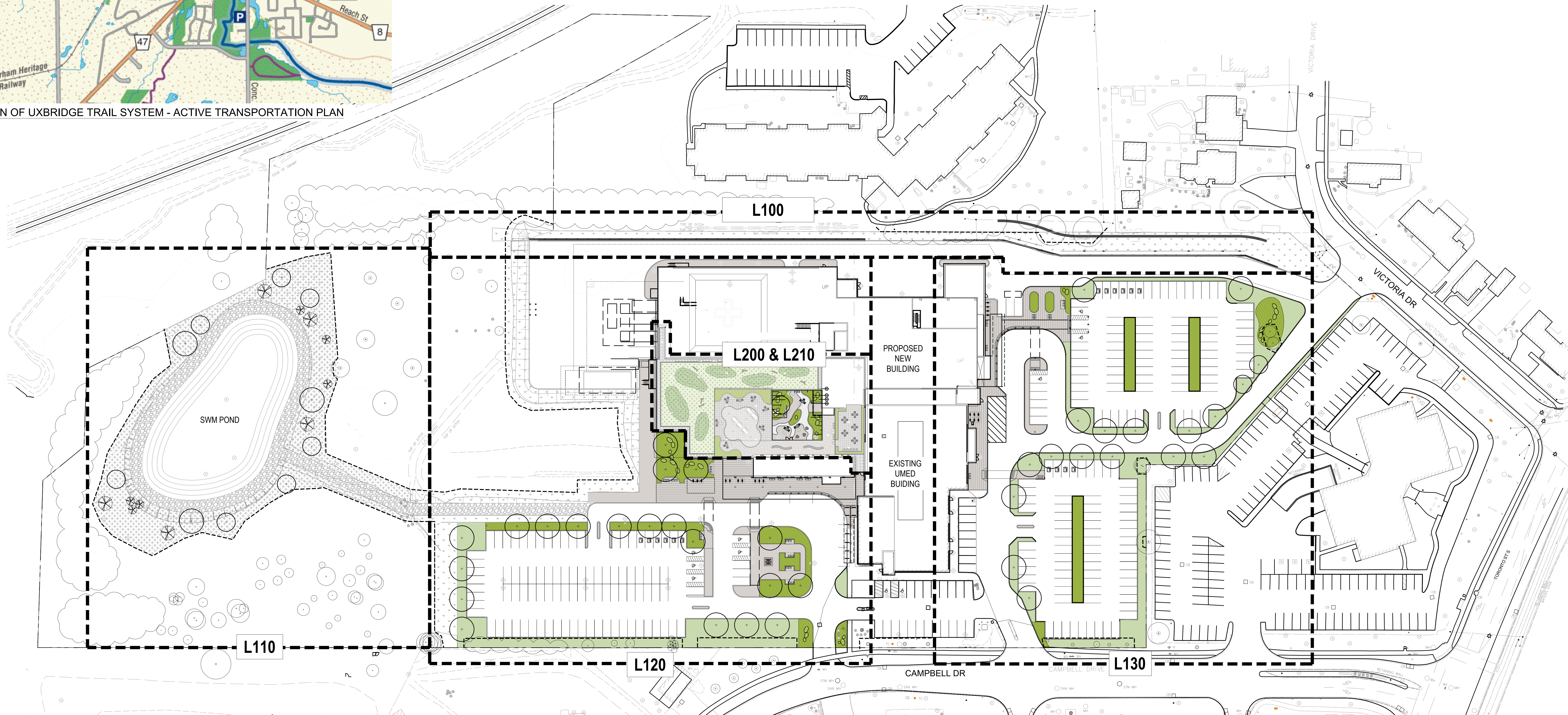
LEGEND



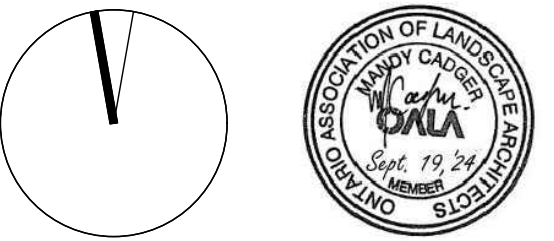
GENERAL NOTES:

1. DRAWINGS NOT TO BE USED FOR CONSTRUCTION UNLESS AUTHORIZED BY THE LANDSCAPE ARCHITECT
2. CONTRACTOR SHALL REPORT ANY DISCREPANCIES BETWEEN THE DRAWINGS AND SITE CONDITIONS PRIOR TO COMMENCEMENT OF THE WORK
3. ALL UTILITY LOCATES ARE THE RESPONSIBILITY OF THE CONTRACTOR. HAND DIG WITHIN THE LIMITS RECOMMENDED BY THE SERVICE UTILITY. UTILITY CONFLICTS WITH PROPOSED TREE LOCATIONS MUST BE REPORTED IMMEDIATELY TO THE LANDSCAPE ARCHITECT
4. BASE DRAWING PROVIDED BY DIAMOND SCHMITT ARCHITECTS
5. VEGETATION INVENTORY BY GSP GROUP INC.
6. LANDSCAPE DRAWINGS SHOW ENGINEERING INFORMATION FOR DESIGN PURPOSES ONLY. DO NOT CONSTRUCT ENGINEERING WORKS FROM THESE DRAWINGS

ISSUED		
NO.	DATE	DESCRIPTION
1	2024-04-01	Issued for Schematic Design Coding
2	2024-04-26	Issued for MCH Draft Submission
3	2024-05-02	Issued for Stage 2.1 Block Schematics
4	2024-07-12	Issued for Coordination
5	2024-07-31	Issued for SOW/O
6	2024-09-19	Issued for Site Plan Approval



NOT FOR CONSTRUCTION

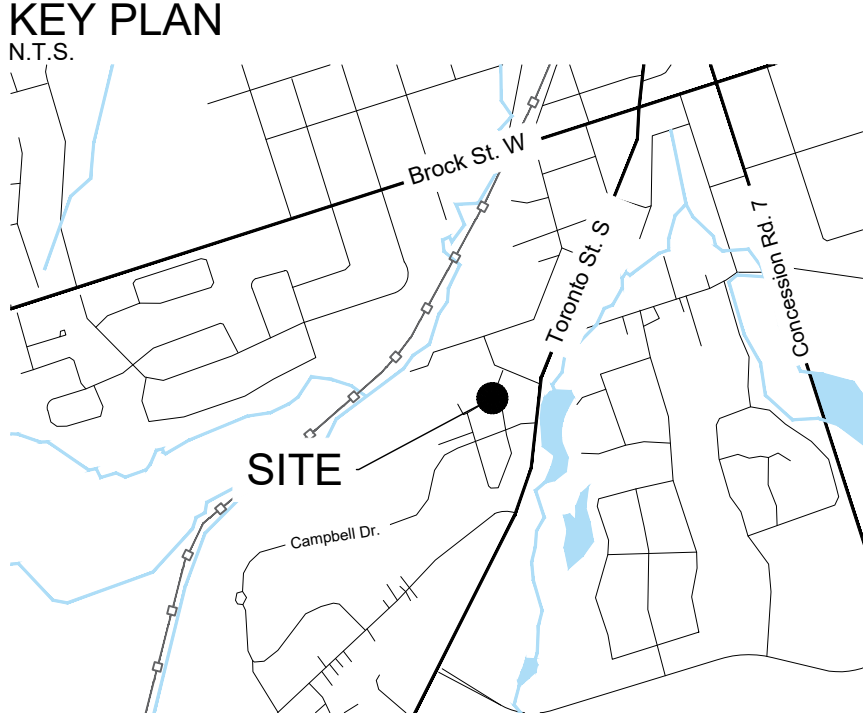


CONTRACTOR MUST CHECK & VERIFY ALL DIMENSIONS ON THE JOB.
DO NOT SCALE DRAWINGS.
ALL DRAWINGS, SPECIFICATIONS AND RELATED DOCUMENTS ARE THE COPYRIGHT PROPERTY OF THE ARCHITECT. THEY MUST BE RETURNED UPON REQUEST. REPRODUCTION OF DRAWINGS, SPECIFICATIONS AND RELATED DOCUMENTS IN PART OR IN WHOLE IS FORBIDDEN WITHOUT THE WRITTEN PERMISSION OF THE ARCHITECT.
THIS DRAWING IS NOT TO BE USED FOR CONSTRUCTION UNLESS SIGNED BY THE ARCHITECT.



Uxbridge Hospital
PROJECT NO. 23175

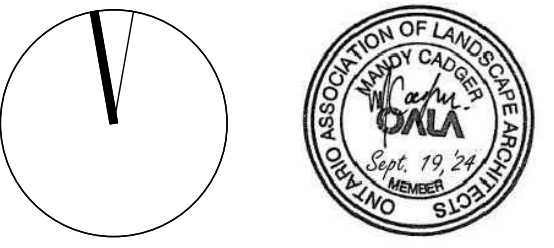
Landscape Site Plan
AS SHOWN
L100



- LEGEND**
- EXISTING TREES
 - PROPOSED DECIDUOUS TREES
 - PROPOSED CONIFEROUS TREES
 - PLANTING BED
 - SOD
 - SEED MIX 'A'
 - CONCRETE PAVING
 - DECORATIVE CONCRETE PAVING
 - GRAVEL PATH
 - BENCH
 - BIKE RACK
 - SAFETY BOLLARD
 - EXTENT OF BIOSWALE
 - PROPERTY BOUNDARY

PLANT SCHEDULE SWM POND							
CODE	QTY	BOTANICAL NAME	COMMON NAME	SIZE	CONTAINER		REMARKS
CONIFEROUS TREES							
LL	5	Larix laricina	American Larch	200cm Ht.	W.B.		Native
TO	6	Thuja occidentalis	Eastern White Cedar	200cm Ht.	W.B.		Native
DECIDUOUS TREES							
AS	3	Acer saccharum	Sugar Maple	60mm Cal.	W.B.		Native
PT	7	Populus tremuloides	Trembling Aspen	200cm Ht.	10 gal.		Native
CODE	QTY	BOTANICAL NAME	COMMON NAME	SIZE	CONTAINER	SPACING	REMARKS
DECIDUOUS SHRUBS							
Cs	12	Cornus sericea	Red Osier Dogwood	50cm	3 gal.	2 m	Native
Rb	16	Rosa blanda	Smooth Rose	---	2 gal.	1.5 m	Native
Ro	14	Rubus odoratus	Flowering Raspberry	---	2 gal.	1.5 m	Native
Sd	11	Salix discolor	Pussy Willow	60cm	3 gal.	2 m	Native
Sa	9	Spiraea alba	Meadowweet	---	2 gal.	1.5 m	Native
Vi	19	Viburnum lentago	Nannyberry	50cm	3 gal.	1.5 m	Native

NOT FOR
CONSTRUCTION



CONTRACTOR MUST CHECK & VERIFY ALL DIMENSIONS ON THE JOB.
DO NOT SCALE DRAWINGS.
ALL DRAWINGS, SPECIFICATIONS AND RELATED DOCUMENTS ARE THE COPYRIGHT PROPERTY OF THE ARCHITECT. THEY MUST BE RETURNED UPON REQUEST. REPRODUCTION OF DRAWINGS, SPECIFICATIONS AND RELATED DOCUMENTS IN PART OR IN WHOLE IS FORBIDDEN WITHOUT THE WRITTEN PERMISSION OF THE ARCHITECT.
THIS DRAWING IS NOT TO BE USED FOR CONSTRUCTION UNTIL SIGNED BY THE ARCHITECT.

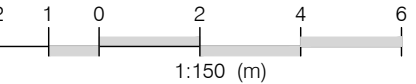


Uxbridge Hospital
PROJECT NO. 23175

Landscape Site
Layout and Planting Plan

1 : 150

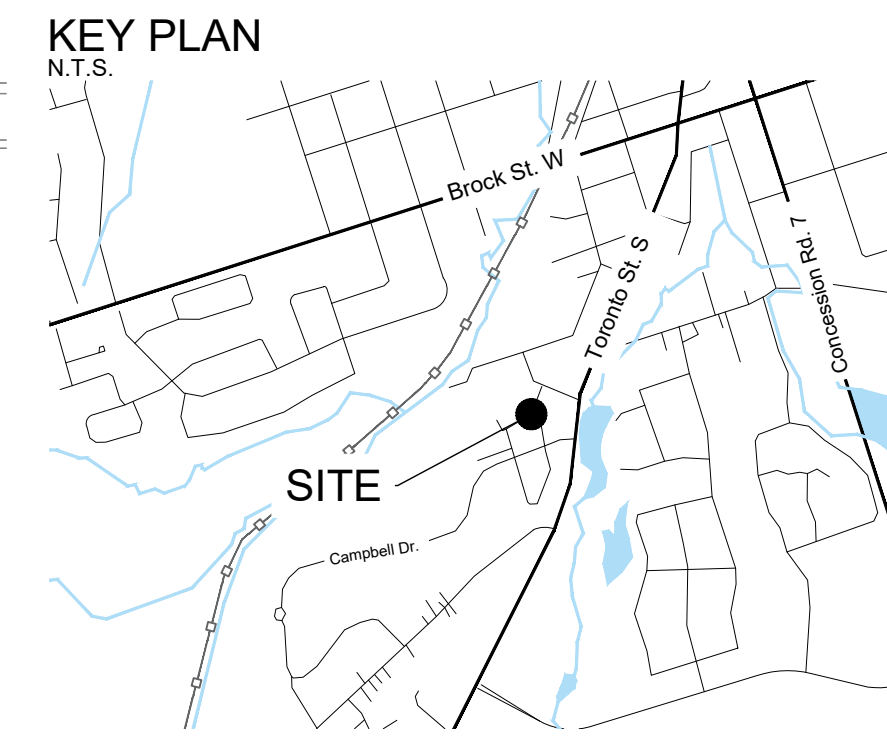
L110



GENERAL NOTES:

1. DRAWINGS NOT TO BE USED FOR CONSTRUCTION UNLESS AUTHORIZED BY THE LANDSCAPE ARCHITECT
2. CONTRACTOR SHALL REPORT ANY DISCREPANCIES BETWEEN THE DRAWINGS AND SITE CONDITIONS PRIOR TO COMMENCEMENT OF THE WORK
3. ALL UTILITY LOCATES ARE THE RESPONSIBILITY OF THE CONTRACTOR. HAND IS: WITHIN THE LIMITS RECOMMENDED BY THE SERVICE UTILITY. UTILITY CONFLICTS WITH PROPOSED TREE LOCATIONS MUST BE REPORTED IMMEDIATELY TO THE LANDSCAPE ARCHITECT ARCHITECTS
4. BASE DRAWING PROVIDED BY DIAMOND SCHMITT ARCHITECTS
5. VEGETATION INVENTORY BY GSP GROUP INC.
6. LANDSCAPE DRAWINGS SHOW ENGINEERING INFORMATION FOR DESIGN PURPOSES ONLY. DO NOT CONSTRUCT ENGINEERING WORKS FROM THESE DRAWINGS

ISSUED		
NO.	DATE	DESCRIPTION
1	2024-04-01	Issued for Schematic Design Costing
2	2024-04-26	Issued for MOH Draft Submission
3	2024-05-02	Issued for Stage 2.1 Block Schematics
4	2024-07-12	Issued for Coordination
5	2024-07-31	Issued for 50%DD
6	2024-09-19	Issued for Site Plan Approval

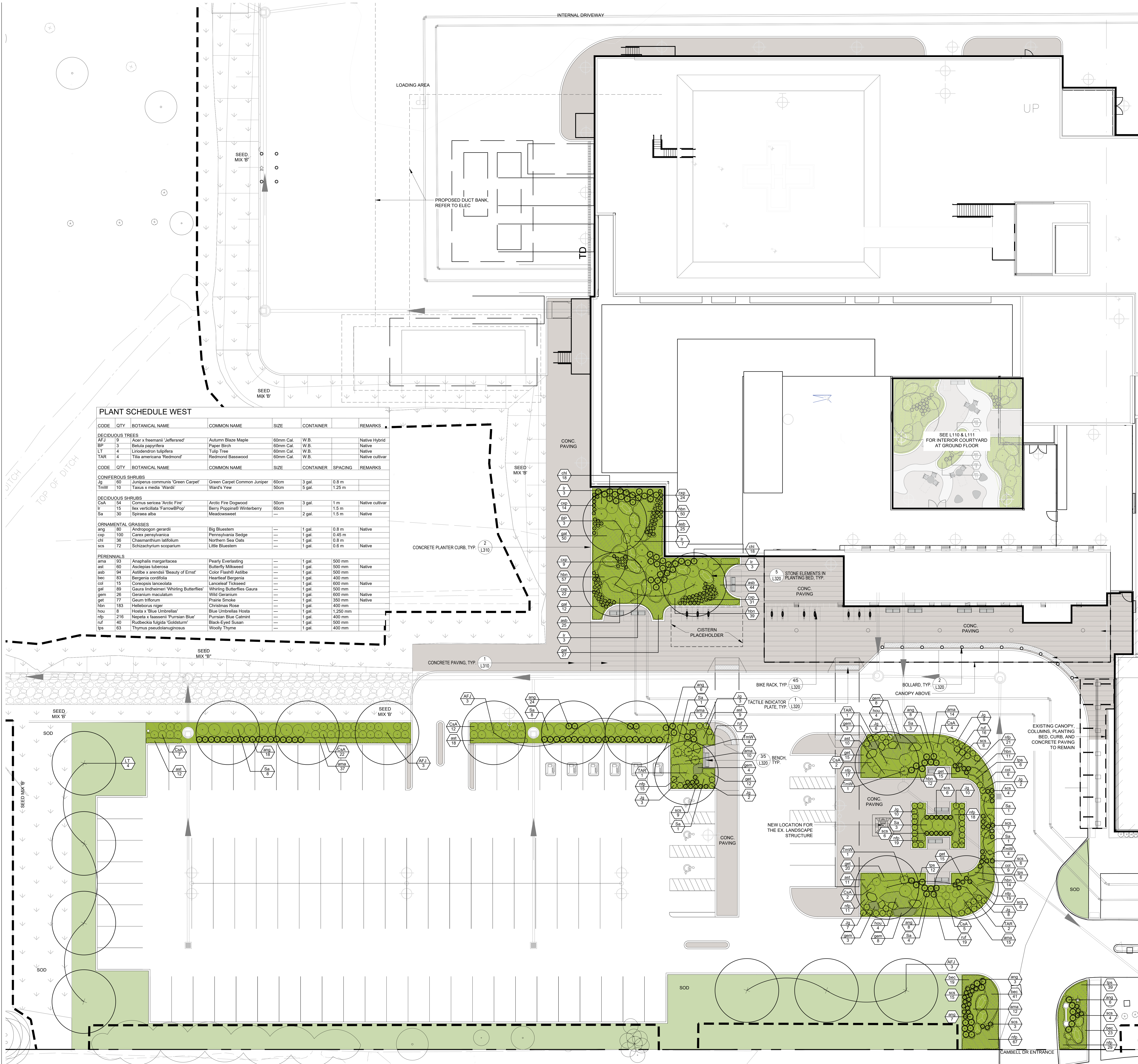


LEGEND

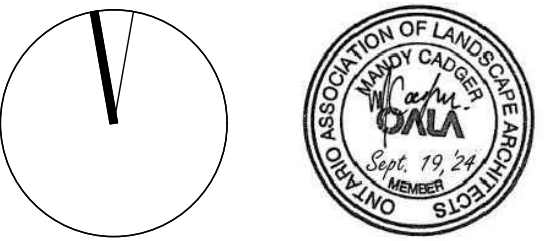
- EXISTING TREES
- PROPOSED DECIDUOUS TREES
- PROPOSED CONIFEROUS TREES
- PLANTING BED
- SOD
- SEED MIX 'A'
- SEED MIX 'B'
- CONCRETE PAVING
- DECORATIVE CONCRETE PAVING
- GRAVEL PATH
- BENCH
- BIKE RACK
- SAFETY BOLLARD
- EXTENT OF BIOSWALE
- PROPERTY BOUNDARY

PLANT SCHEDULE WEST

CODE	QTY	BOTANICAL NAME	COMMON NAME	SIZE	CONTAINER	SPACING	REMARKS
DECIDUOUS TREES							
AFJ	9	Acer x freemanii 'Jeffersred'	Autumn Blaze Maple	60mm Cal.	W.B.		Native Hybrid
BP	3	Betula papyrifera	Paper Birch	60mm Cal.	W.B.		Native
LT	4	Liriodendron tulipifera	Tulip Tree	60mm Cal.	W.B.		Native
TAR	4	Tilia americana 'Redmond'	Redmond Basswood	60mm Cal.	W.B.		Native cultivar
CONIFEROUS SHRUBS							
Jg	60	Juniperus communis 'Green Carpet'	Green Carpet Common Juniper	60cm	3 gal.	0.8 m	
TrmW	10	Taxus x media 'Wardii'	Ward's Yew	50cm	5 gal.	1.25 m	
DECIDUOUS SHRUBS							
CsA	54	Cornus sericea 'Arctic Fire'	Arctic Fire Dogwood	50cm	3 gal.	1 m	Native cultivar
Ir	15	Ilex verticillata 'FarrowBPop'	Berry Poppins Winterberry	60cm	1 gal.	0.45 m	
Sa	30	Spiraea alba	Meadowsweet	---	2 gal.	1.5 m	Native
ORNAMENTAL GRASSES							
ang	80	Andropogon gerardii	Big Bluestem	---	1 gal.	0.8 m	Native
cap	100	Carex pensylvanica	Pennsylvania Sedge	---	1 gal.	0.45 m	
ch	36	Chasmodon latifolium	Northern Sea Oats	---	1 gal.	0.8 m	
scs	72	Schizachyrium scoparium	Little Bluestem	---	1 gal.	0.6 m	Native
PERENNIALS							
ama	63	Anaphalis margaritacea	Pearly Everlasting	---	1 gal.	500 mm	Native
ast	60	Aster x tuberosa	Butterfly Milkweed	---	1 gal.	500 mm	
asb	94	Astilbe x arendsii 'Beauty of Ems'	Color Flash® Astilbe	---	1 gal.	500 mm	
bec	63	Bergenia cordifolia	Heartleaf Bergenia	---	1 gal.	400 mm	
col	15	Coreopsis lanceolata	Lanceleaf Tickseed	---	1 gal.	600 mm	Native
gal	89	Gaura lindheimeri 'Whirling Butterflies'	Whirling Butterflies Gaura	---	1 gal.	500 mm	
gem	26	Geranium maculatum	Wild Geranium	---	1 gal.	600 mm	Native
get	77	Geum triflorum	Prairie Smoke	---	1 gal.	350 mm	Native
hbn	183	Heliolepis niger	Christmas Rose	---	1 gal.	400 mm	
hou	8	Hosta x 'Blue Umbrellas'	Blue Umbrellas Hosta	---	1 gal.	1,250 mm	
nlp	216	Nepeta x faassenii 'Purrsian Blue'	Purrsian Blue Catmint	---	1 gal.	400 mm	
ruf	40	Rudbeckia hirta 'Goldsturm'	Black-Eyed Susan	---	1 gal.	500 mm	
tps	63	Thymus pseudolanuginosus	Woolly Thyme	---	1 gal.	400 mm	



NOT FOR
CONSTRUCTION



CONTRACTOR MUST CHECK & VERIFY ALL DIMENSIONS ON THE JOB.

DO NOT SCALE DRAWINGS.

ALL DRAWINGS, SPECIFICATIONS AND RELATED DOCUMENTS ARE THE COPYRIGHT PROPERTY OF THE ARCHITECT. THEY MUST BE RETURNED UPON REQUEST. REPRODUCTION OF DRAWINGS, SPECIFICATIONS AND RELATED DOCUMENTS IN PART OR WHOLE IS FORBIDDEN WITHOUT THE WRITTEN PERMISSION OF THE ARCHITECT.

THIS DRAWING IS NOT TO BE USED FOR CONSTRUCTION UNLESS SIGNED BY THE ARCHITECT.



Uxbridge Hospital
PROJECT NO. 23175

Landscape Site
Layout and Planting Plan
1:150

L120

GENERAL NOTES:

1. DRAWINGS NOT TO BE USED FOR CONSTRUCTION UNLESS AUTHORIZED BY THE LANDSCAPE ARCHITECT
2. CONTRACTOR SHALL REPORT ANY DISCREPANCIES BETWEEN THE DRAWINGS AND SITE CONDITIONS PRIOR TO COMMENCEMENT OF THE WORK
3. ALL UTILITY LOCATES ARE THE RESPONSIBILITY OF THE CONTRACTOR. HAND DIG WITHIN THE LIMITS RECOMMENDED BY THE SERVICE UTILITY. UTILITY CONFLICTS WITH PROPOSED TREE LOCATIONS MUST BE REPORTED IMMEDIATELY TO THE LANDSCAPE ARCHITECT
4. BASE DRAWING PROVIDED BY DIAMOND SCHMITT ARCHITECTS
5. VEGETATION INVENTORY BY GSP GROUP INC.
6. LANDSCAPE DRAWINGS SHOW ENGINEERING INFORMATION FOR DESIGN PURPOSES ONLY. DO NOT CONSTRUCT ENGINEERING WORKS FROM THESE DRAWINGS

ISSUED

NO.	DATE	DESCRIPTION
1	2024-04-01	Issued for Schematic Design Coding
2	2024-04-26	Issued for MCH Draft Submission
3	2024-05-02	Issued for Stage 2.1 Block Schematics
4	2024-07-12	Issued for Coordination
5	2024-07-31	Issued for 50% SOD
6	2024-09-19	Issued for Site Plan Approval

KEY PLAN

N.T.S.

SAN MICHIGAN

VICTORIA DR

Brook St. W

Campana Dr

SITE

LEGEND

EXISTING TREES

PROPOSED DECIDUOUS TREES

PROPOSED CONIFEROUS TREES

PLANTING BED

SOD

SEED MIX 'A'

SEED MIX 'B'

CONCRETE PAVING

DECORATIVE CONCRETE PAVING

GRAVEL PATH

BENCH

BIKE RACK

SAFETY BOLLARD

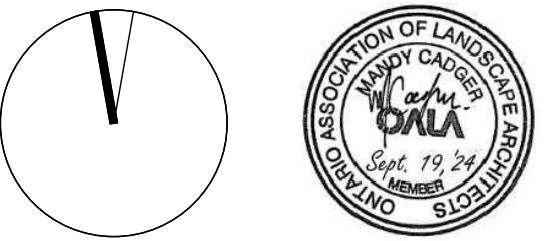
EXTENT OF BIOSWALE

PROPERTY BOUNDARY

PLANT SCHEDULE EAST

CODE	QTY	BOTANICAL NAME	COMMON NAME	SIZE	CONTAINER	REMARKS
DECIDUOUS TREES						
AFJ	3	Acer x freemant 'Jeffersred'	Autumn Blaze Maple	60mm Cal.	W.B.	Native Hybrid
GTS	8	Gleditsia triacanthos inermis 'Shademaster'	Shademaster Honeylocust	60mm Cal.	W.B.	Native
OV	2	Ostrya virginiana	Ironwood	60mm Cal.	W.B.	Native
QB	5	Quercus bicolor	Swamp White Oak	60mm Cal.	W.B.	Native
CONIFEROUS SHRUBS						
Jg	47	Juniperus communis 'Green Carpet'	Green Carpet Common Juniper	60cm	3 gal.	0.8 m
TmW	7	Taxus x media 'Wardii'	Ward's Yew	50cm	5 gal.	1.25 m
DECIDUOUS SHRUBS						
CsA	98	Cornus sericea 'Arctic Fire'	Arctic Fire Dogwood	50cm	3 gal.	1 m
Sa	24	Spiraea alba	Meadowweet	---	2 gal.	1.5 m
ORNAMENTAL GRASSES						
ang	120	Andropogon gerardii	Big Bluestem	---	1 gal.	0.8 m
scs	30	Schizachyrium scoparium	Little Bluestem	---	1 gal.	0.6 m
PERENNIALS						
ama	161	Anaphalis margaritacea	Pearly Everlasting	---	1 gal.	500 mm
ast	140	Asclepias tuberosa	Butterfly Milkweed	---	1 gal.	500 mm
bec	54	Bergenia cordifolia	Heartleaf Bergenia	---	1 gal.	400 mm
col	14	Cotoneaster lanceolata	Lanceleaf Tickseed	---	1 gal.	800 mm
get	24	Geum triflorum	Prairie Smoke	---	1 gal.	350 mm
nfp	120	Nepeta x faussenii 'Pursian Blue'	Pursian Blue Catmint	---	1 gal.	400 mm

NOT FOR
CONSTRUCTION



CONTRACTOR MUST CHECK & VERIFY ALL DIMENSIONS ON THE JOB.

DO NOT SCALE DRAWINGS.

ALL DRAWINGS, SPECIFICATIONS AND RELATED DOCUMENTS ARE THE COPYRIGHT PROPERTY OF THE ARCHITECT. THEY MUST BE RETURNED UPON REQUEST. REPRODUCTION OF DRAWINGS, SPECIFICATIONS AND RELATED DOCUMENTS IN PART OR IN WHOLE IS FORBIDDEN WITHOUT THE WRITTEN PERMISSION OF THE ARCHITECT.

THIS DRAWING IS NOT TO BE USED FOR CONSTRUCTION UNLESS SIGNED BY THE ARCHITECT.

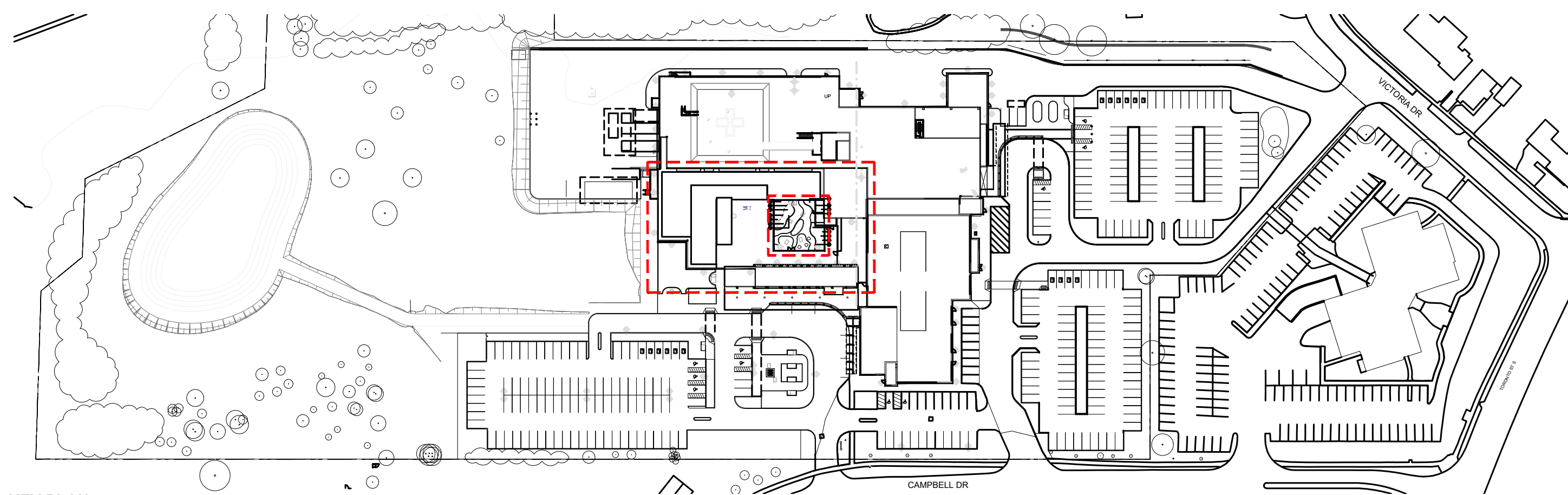


Uxbridge Hospital
PROJECT NO. 23175

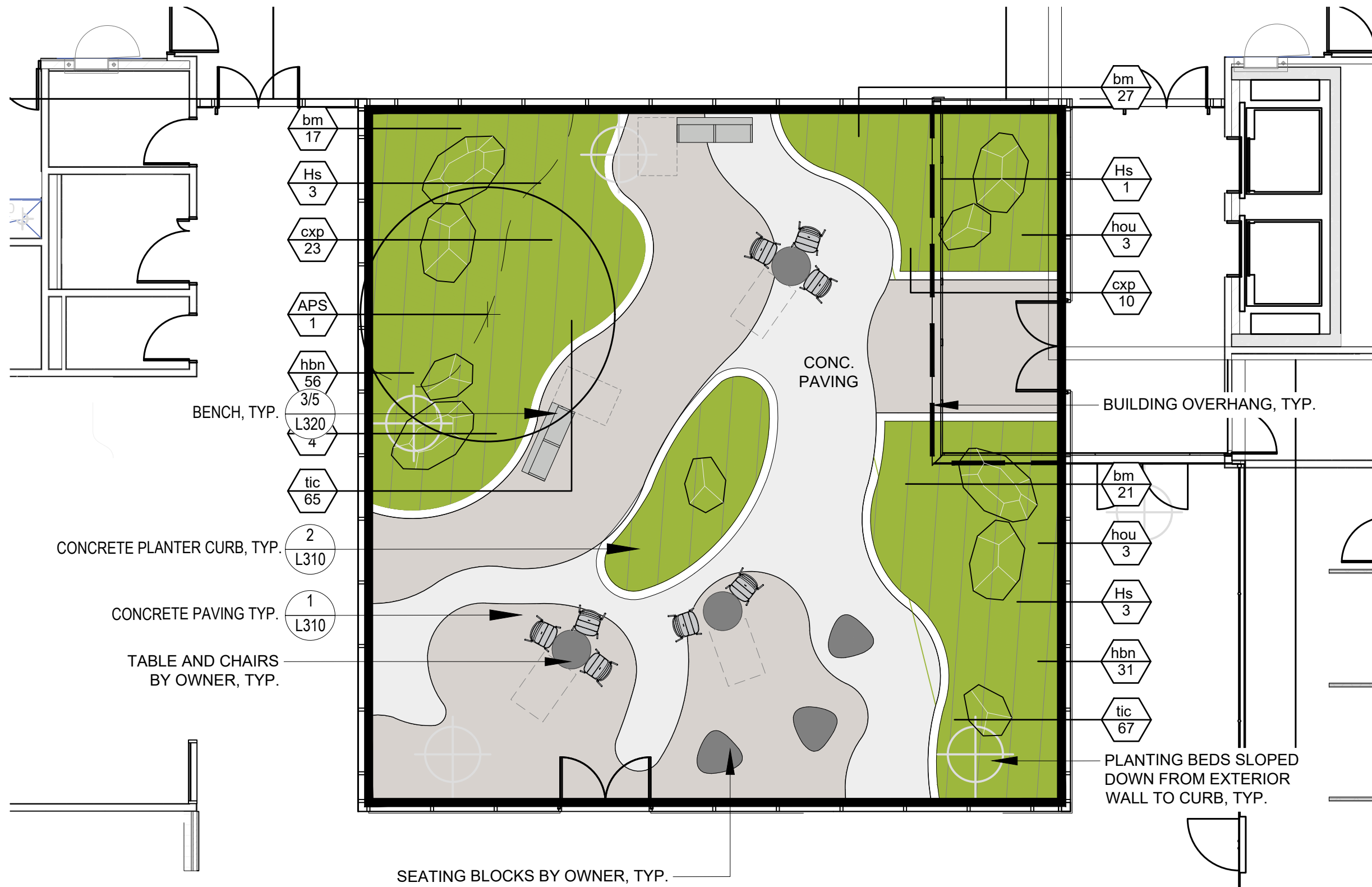
Landscape Site
Layout and Planting Plan
1:150

L130

2 1 0 2 4 6
1:150 (mm)

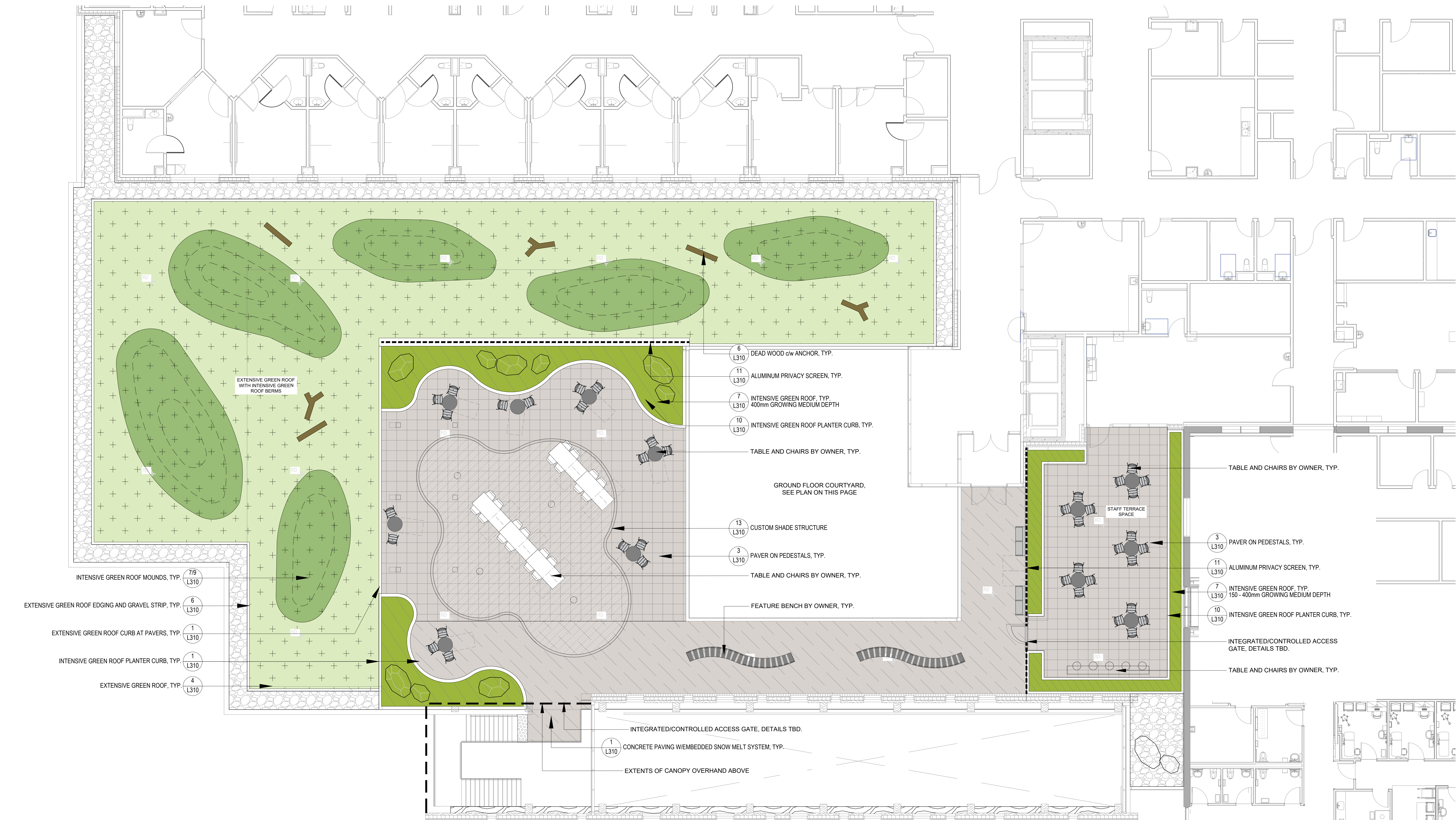


KEY PLAN



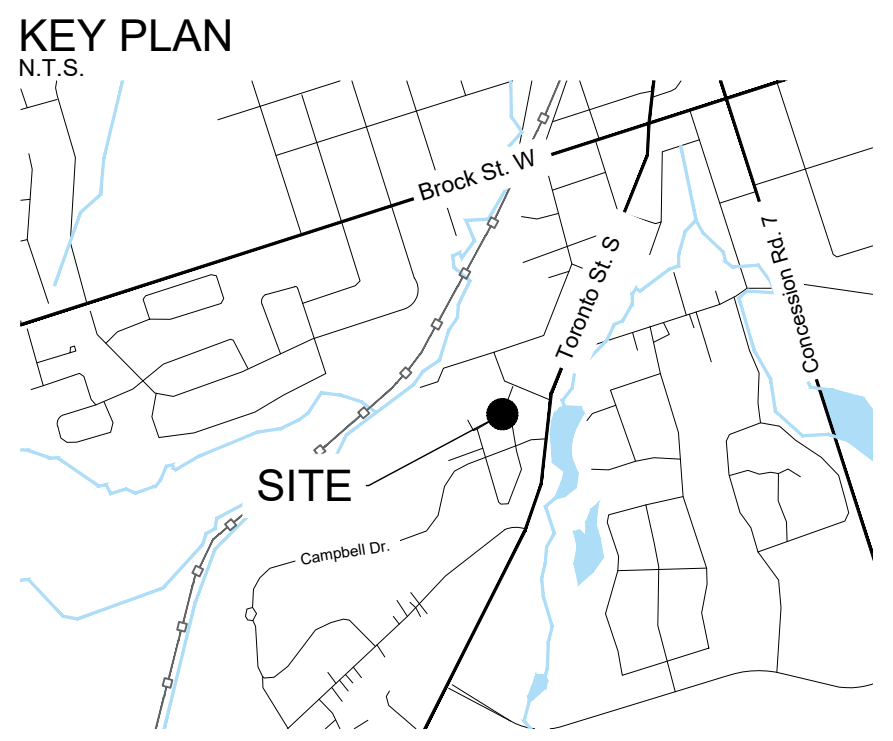
GROUND FLOOR COURTYARD ENLARGEMENT PLAN

1 0 1 2 4
1:100 (m)



ROOF TERRACE PLAN

1 0 1 2 4
1:100 (m)



LEGEND

- PROPOSED DECIDUOUS TREES
- PLANTING BED
- EXTENSIVE GREEN ROOF
- INTENSIVE GREEN ROOF
- CONCRETE PAVING
- COLOURED CONCRETE PAVING
- PAVER ON PEDESTAL (ALTERNATIVE: CONCRETE PAVING)
- CONCRETE PAVING w/ SNOW MELT AREA
- STONE BALLAST
- BENCH
- TABLE AND CHAIRS
- HARVEST TABLE AND SEATING
- ALUMINUM PRIVACY PANEL

GENERAL NOTES:

- DRAWINGS NOT TO BE USED FOR CONSTRUCTION UNLESS AUTHORIZED BY THE LANDSCAPE ARCHITECT
- CONTRACTOR SHALL REPORT ANY DISCREPANCIES BETWEEN THE DRAWINGS AND SITE CONDITIONS PRIOR TO COMMENCEMENT OF THE WORK
- ALL UTILITY LOCATES ARE THE RESPONSIBILITY OF THE CONTRACTOR. HAND ISG WITHIN THE LIMITS RECOMMENDED BY THE SERVICE UTILITY. UTILITY CONFLICTS WITH PROPOSED TREE LOCATIONS MUST BE REPORTED IMMEDIATELY TO THE LANDSCAPE ARCHITECT
- BASE DRAWING PROVIDED BY DIAMOND SCHMITT ARCHITECTS
- VEGETATION INVENTORY BY GSP GROUP INC.
- LANDSCAPE DRAWINGS SHOW ENGINEERING INFORMATION FOR DESIGN PURPOSES ONLY. DO NOT CONSTRUCT ENGINEERING WORKS FROM THESE DRAWINGS

ISSUED

NO.	DATE	DESCRIPTION
1	2024-04-01	Issued for Schematic Design Control
2	2024-04-26	Issued for MCH Draft Submission
3	2024-05-02	Issued for Stage 2.1 Block Schematics
4	2024-07-12	Issued for Coordination
5	2024-07-31	Issued for 50% CD
6	2024-09-19	Issued for Site Plan Approval

NOT FOR
CONSTRUCTION



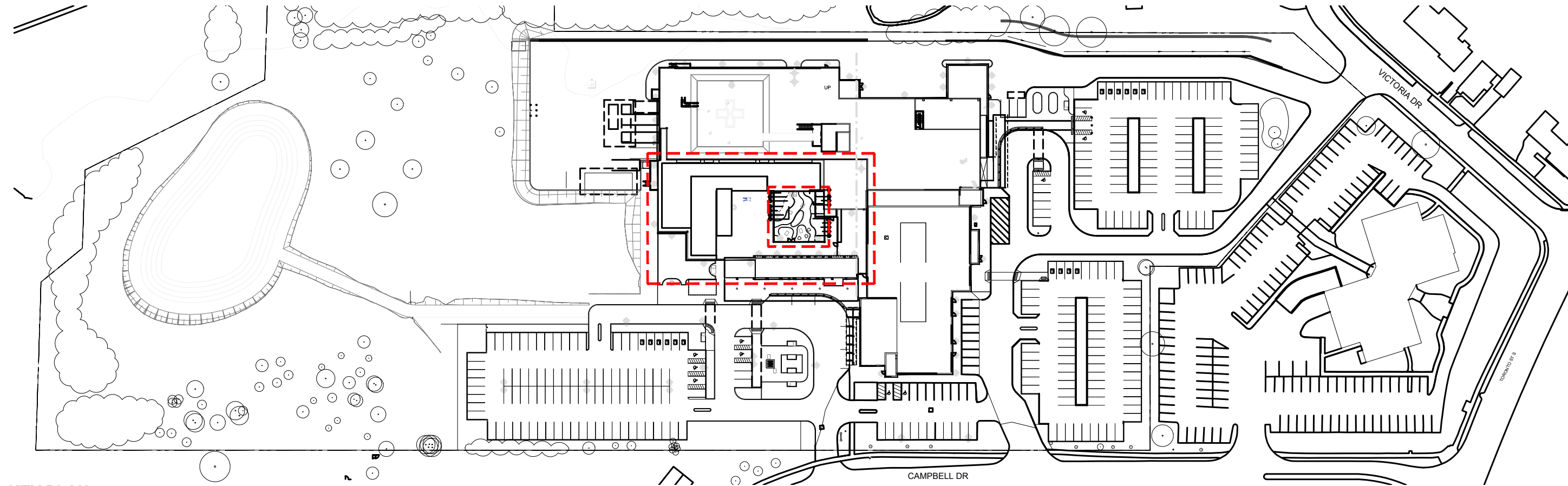
CONTRACTOR MUST CHECK & VERIFY ALL DIMENSIONS ON THE JOB.
DO NOT SCALE DRAWINGS.
ALL DRAWINGS, SPECIFICATIONS AND RELATED DOCUMENTS ARE THE COPYRIGHT PROPERTY OF THE ARCHITECT. THEY MUST BE RETURNED UPON REQUEST. REPRODUCTION OF DRAWINGS, SPECIFICATIONS AND RELATED DOCUMENTS IN PART OR IN WHOLE IS FORBIDDEN WITHOUT THE WRITTEN PERMISSION OF THE ARCHITECT.
THIS DRAWING IS NOT TO BE USED FOR CONSTRUCTION UNLESS SIGNED BY THE ARCHITECT



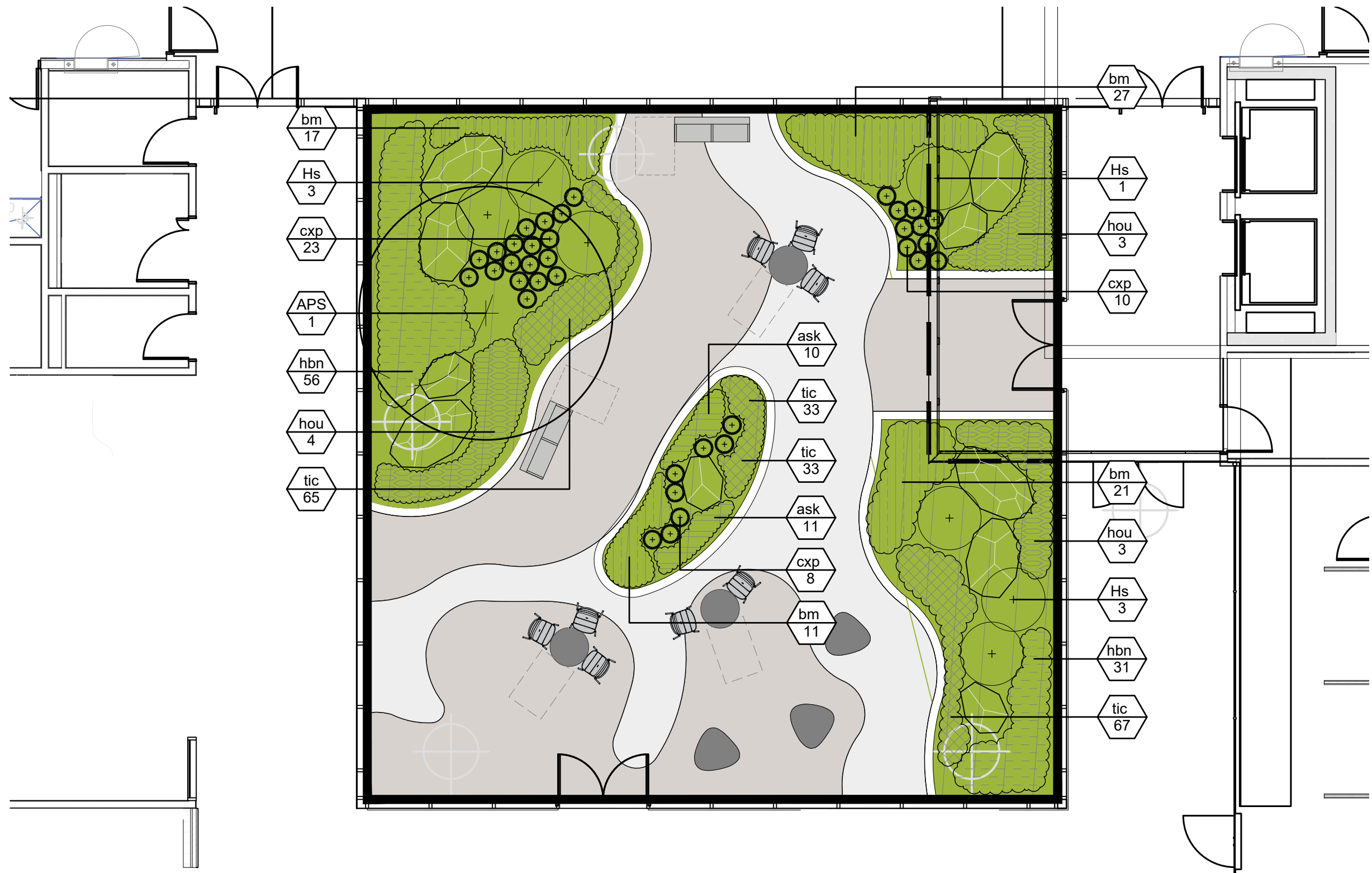
Uxbridge Hospital
PROJECT NO. 23175

Landscape Courtyard and
Roof Terrace Plan
1:100

L200



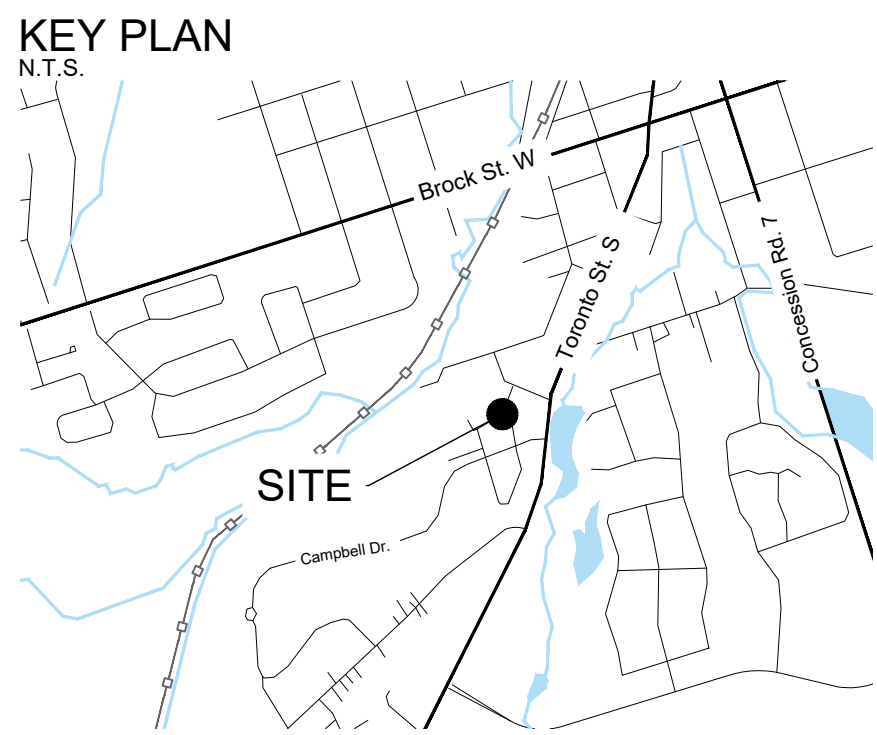
KEY PLAN



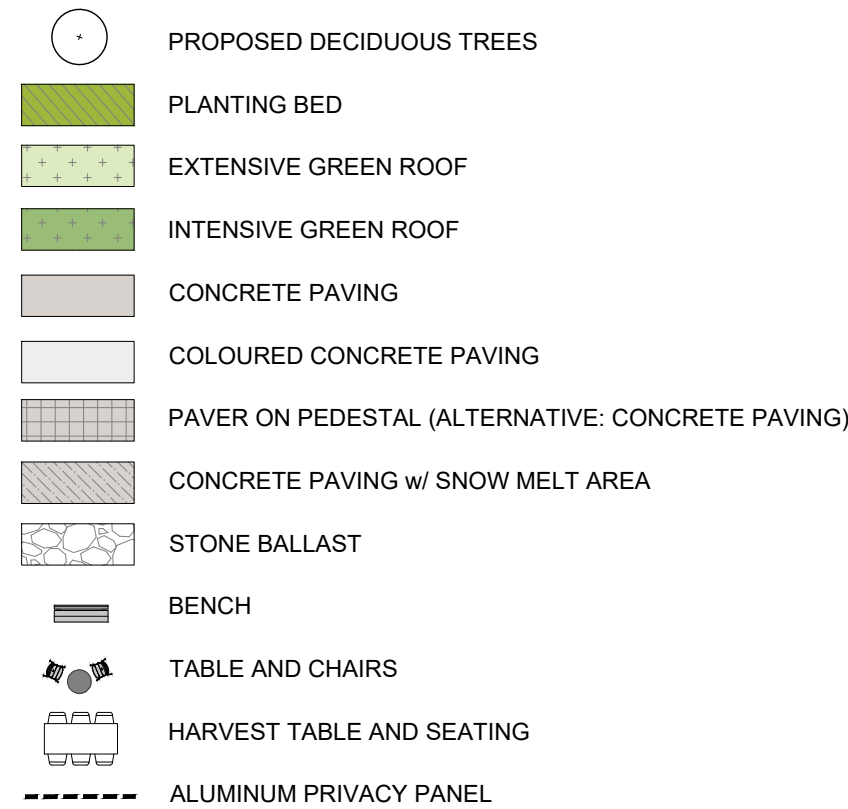
GROUND FLOOR COURTYARD ENLARGEMENT PLAN

PLANT SCHEDULE COURTYARD							
CODE	QTY	BOTANICAL NAME	COMMON NAME	SIZE	CONTAINER	REMARKS	
DECIDUOUS TREES							
APS	1	Acer palmatum 'Sango-kaku'	Coral Bark Japanese Maple	250cm Ht.	BBC		
CODE	QTY	BOTANICAL NAME	COMMON NAME	SIZE	CONTAINER	SPACING	REMARKS
DECIDUOUS SHRUBS							
HS	7	Hydrangea quercifolia 'Sike's Dwarf'	Sike's Dwarf Oakleaf Hydrangea	60cm		1.5 m	
ORNAMENTAL GRASSES							
csp	36	Carex pensylvanica	Pennsylvania Sedge	---	1 gal.	0.45 m	
PERENNIALS							
ask	21	Astilbe simplicifolia 'Key West'	Key West Star Astilbe	---	2 gal.	350 mm	
bm	76	Brunnera macrophylla 'Alexander's Great'	Alexander's Great Siberian Bugloss	---	1 gal.	450 mm	
hbn	87	Helleborus niger	Christmas Rose	---	1 gal.	400 mm	
hou	10	Hosta x 'Blue Umbrellas'	Blue Umbrellas Hosta	---	1 gal.	1,250 mm	
tic	165	Tiarella cordifolia	Foamflower	---	1 gal.	250 mm	

PLANT SCHEDULE ROOF TERRACE							
CODE	QTY	BOTANICAL NAME	COMMON NAME	SIZE	CONTAINER	SPACING	REMARKS
DECIDUOUS SHRUBS							
cs	4	Cornus sericea	Red Osier Dogwood	50cm	3 gal.	2 m	Native
Ra	6	Rhus aromatica	Fragrant Sumac	50cm	3 gal.	2.5 m	Native
ORNAMENTAL GRASSES							
scs	47	Schizachyrium scoparium	Little Bluestem	---	1 gal.	0.6 m	Native
PERENNIALS							
all	127	Allium cernuum	Nodding Onion	---	1 gal.	300 mm	Native
ama	101	Anaphalis margaritacea	Pearly Everlasting	---	1 gal.	500 mm	
ala	93	Aster alpinus	Alpine Aster	---	300 mm		
get	130	Geum triflorum	Prairie Smoke	---	1 gal.	350 mm	Native



LEGEND



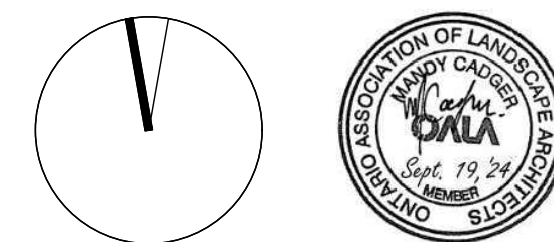
- GENERAL NOTES:**
- DRAWINGS NOT TO BE USED FOR CONSTRUCTION UNLESS AUTHORIZED BY THE LANDSCAPE ARCHITECT
 - CONTRACTOR SHALL REPORT ANY DISCREPANCIES BETWEEN THE DRAWINGS AND SITE CONDITIONS PRIOR TO COMMENCEMENT OF THE WORK
 - ALL UTILITY LOCATES ARE THE RESPONSIBILITY OF THE CONTRACTOR. HAND ISG WITHIN THE LIMITS RECOMMENDED BY THE SERVICE UTILITY. UTILITY CONFLICTS WITH PROPOSED TREE LOCATIONS MUST BE REPORTED IMMEDIATELY TO THE LANDSCAPE ARCHITECT ARCHITECTS
 - BASE DRAWING PROVIDED BY DIAMOND SCHMITT ARCHITECTS
 - VEGETATION INVENTORY BY GSP GROUP INC.
 - LANDSCAPE DRAWINGS SHOW ENGINEERING INFORMATION FOR DESIGN PURPOSES ONLY. DO NOT CONSTRUCT ENGINEERING WORKS FROM THESE DRAWINGS

ISSUED		
NO.	DATE	DESCRIPTION
1	2024-04-01	Issued for Schematic Design Control
2	2024-04-26	Issued for MCH Draft Submission
3	2024-05-02	Issued for Stage 2.1 Block Schematics
4	2024-07-12	Issued for Coordination
5	2024-07-31	Issued for 50%DD
6	2024-09-19	Issued for Site Plan Approval



ROOF TERRACE PLAN

NOT FOR CONSTRUCTION



CONTRACTOR MUST CHECK & VERIFY ALL DIMENSIONS ON THE JOB.
DO NOT SCALE DRAWINGS.
ALL DRAWINGS, SPECIFICATIONS AND RELATED DOCUMENTS ARE THE PROPERTY OF THE ARCHITECT. THEY MUST BE RETURNED UPON REQUEST. REPRODUCTION OF DRAWINGS, SPECIFICATIONS AND RELATED DOCUMENTS IN PART OR IN WHOLE IS FORBIDDEN WITHOUT THE WRITTEN PERMISSION OF THE ARCHITECT.



Uxbridge Hospital
PROJECT NO.: 23175

Landscape Courtyard and
Roof Terrace - Planting Plan

1 : 100

L210

1. DRAWINGS NOT TO BE USED FOR CONSTRUCTION UNLESS AUTHORIZED BY THE LANDSCAPE ARCHITECT
2. CONTRACTOR SHALL REPORT ANY DISCREPANCIES BETWEEN THE DRAWINGS AND SITE CONDITIONS PRIOR TO COMMENCEMENT OF THE WORK
3. ALL UTILITY LOCATES ARE THE RESPONSIBILITY OF THE CONTRACTOR. HAND DIES WITHIN THE LIMITS RECOMMENDED BY THE SERVICE UTILITY. UTILITY CONFLICTS WITH PROPOSED TREE LOCATIONS MUST BE REPORTED IMMEDIATELY TO THE LANDSCAPE ARCHITECT
4. BASE DRAWING PROVIDED BY DIAMOND SCHMITT ARCHITECTS.
5. VEGETATION INVENTORY BY GSP GROUP INC.
6. LANDSCAPE DRAWINGS SHOW ENGINEERING INFORMATION FOR DESIGN PURPOSES ONLY. DO NOT CONSTRUCT ENGINEERING WORKS FROM THESE DRAWINGS

ISSUED		
NO.	DATE	DESCRIPTION
1	2024-07-26	Issued for Coordination
2	2024-07-31	Issued for 50% DO
3	2024-09-19	Issued for SPA



1. NO-MOW MEADOW 'A' SEED MIXTURE IS 'CVC 1 - UPLAND MIX' PER CREDIT VALLEY CONSERVATION PLANT SELECTION GUIDELINE, APRIL 2018.
2. SEED MIXTURE AVAILABLE FROM OSC SEED OR APPROVED ALTERNATE.
3. NURSE CROP TO BE APPLIED AT 15KG/HA. SPRING-SUMMER PLANTING TO BE SOWN WITH 40% OATS, 45% BARLEY & 15% CANADA WILD RYE. FALL PLANTING TO BE SOWN WITH 100% WINTER WHEAT.

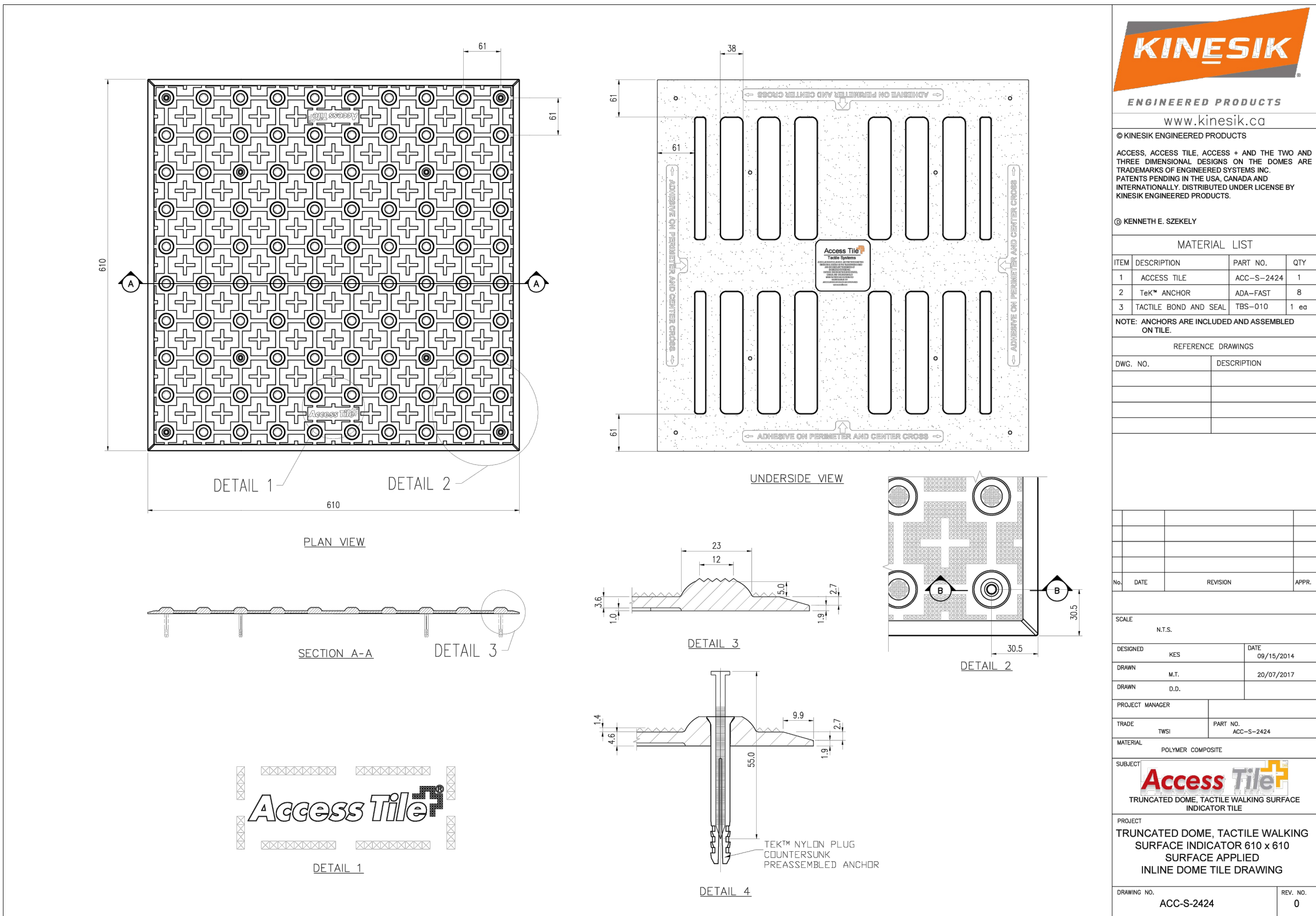
6 MEADOW SEED MIXES
N.T.S.

1. SEED MIXTURE BASED ON '8340 - LOW MAINTENANCE ECO LAWN' AVAILABLE FROM OSC SEED OR APPROVED ALTERNATE.
2. NURSE CROP TO BE APPLIED AT 15KG/HA. SPRING-SUMMER PLANTING TO BE SOWN WITH 40% OATS, 45% BARLEY & 15% CANADA WILD RYE. FALL PLANTING TO BE SOWN WITH 100% WINTER WHEAT.

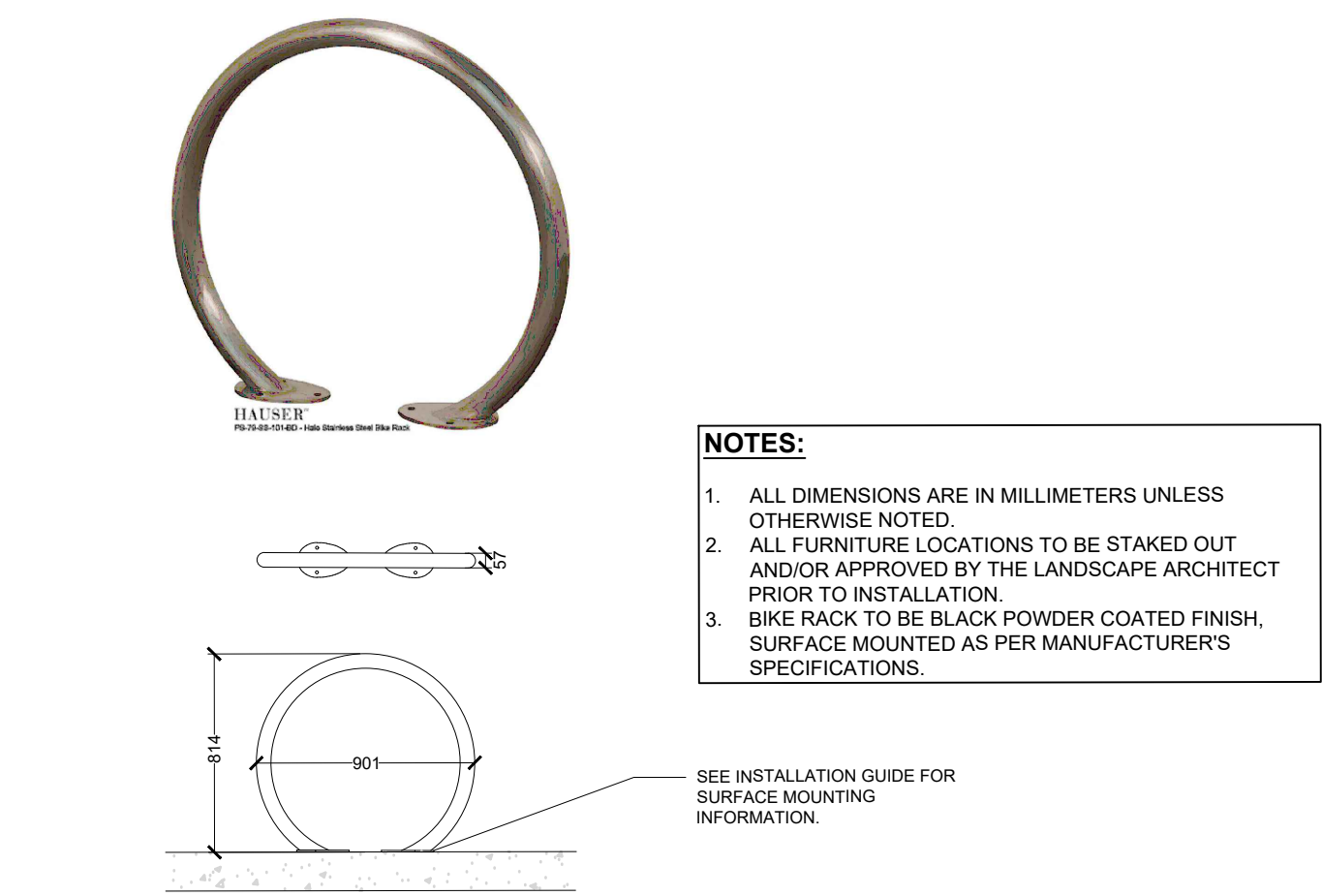
NOTE:
1. ALL SEEDED AREAS SHALL HAVE MINIMUM
TOPSOIL DEPTH OF 150mm.

1. SEEDING SHALL BE PERFORMED BETWEEN MID-MAY AND MID-SEPTEMBER. OBTAIN CONSULTANT'S APPROVAL FOR ANY SEEDING OUTSIDE OF THE ABOVE PREFERED WINDOW.
2. APPLY HYDRAULIC MIXTURE EVENLY AND UNIFORMLY AND AT SUCH RATE TO MEET THE COVERAGE SPECIFIED IN OPSR S12.
3. STRAW SHOULD JUST COVER THE SOIL SURFACE, BUT NOT BURRY IT. SOME SOIL SHOULD BE VISIBLE THROUGH THE STRAW - TO A MAXIMUM OF 10%.
4. ALL SEEDING TO BE APPLIED THROUGH HYDRAULIC METHOD EXCEPT AREAS WHERE CONDITIONS WILL ONLY PERMIT MECHANICAL SEEDING. CONTRACTOR TO OBTAIN CONSULTANT'S APPROVAL FOR ALL ALTERNATE SEEDING METHODS.
5. FOR AREAS WHERE SEED IS APPLIED TO STEEP SLOPES (2:1 AND ABOVE) AN EROSION CONTROL, BLANKET SHALL BE APPLIED AND STRIPPED APPROPRIATELY.

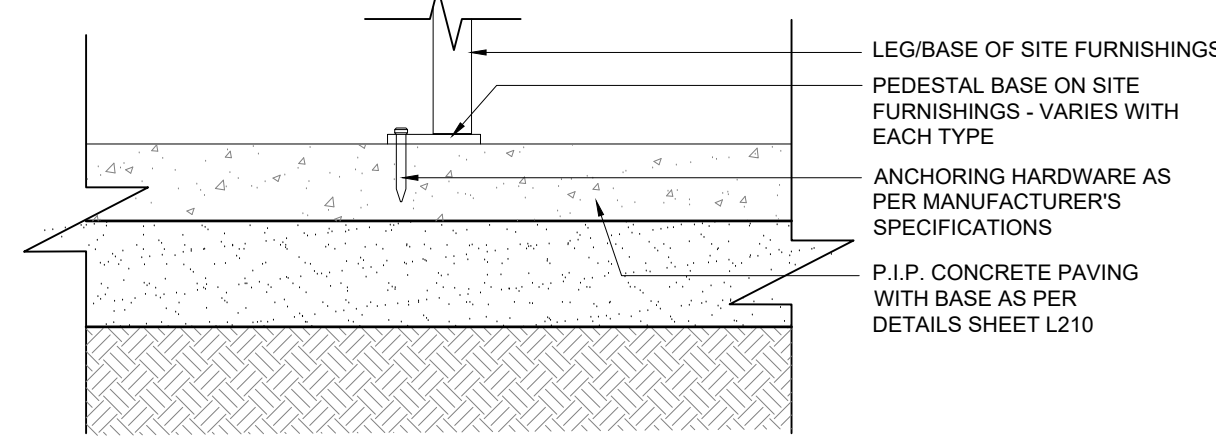




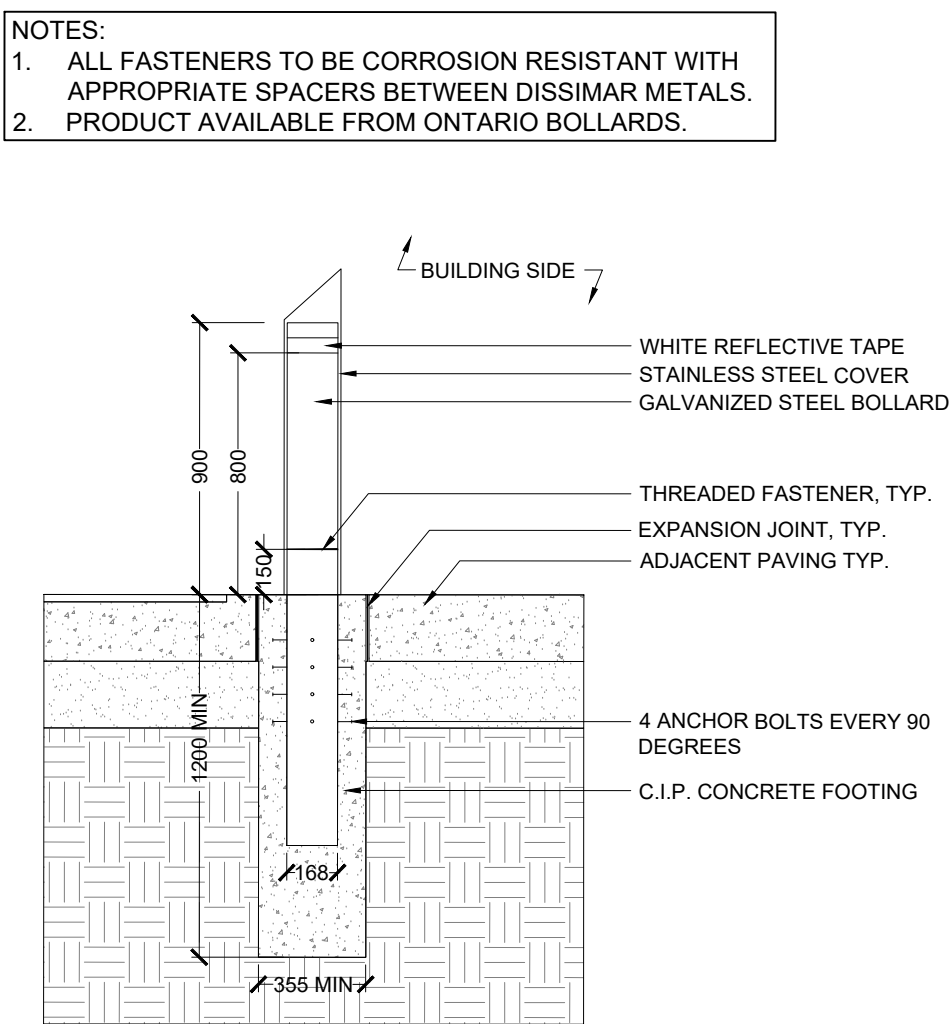
1 TACTILE PLATE
N.T.S



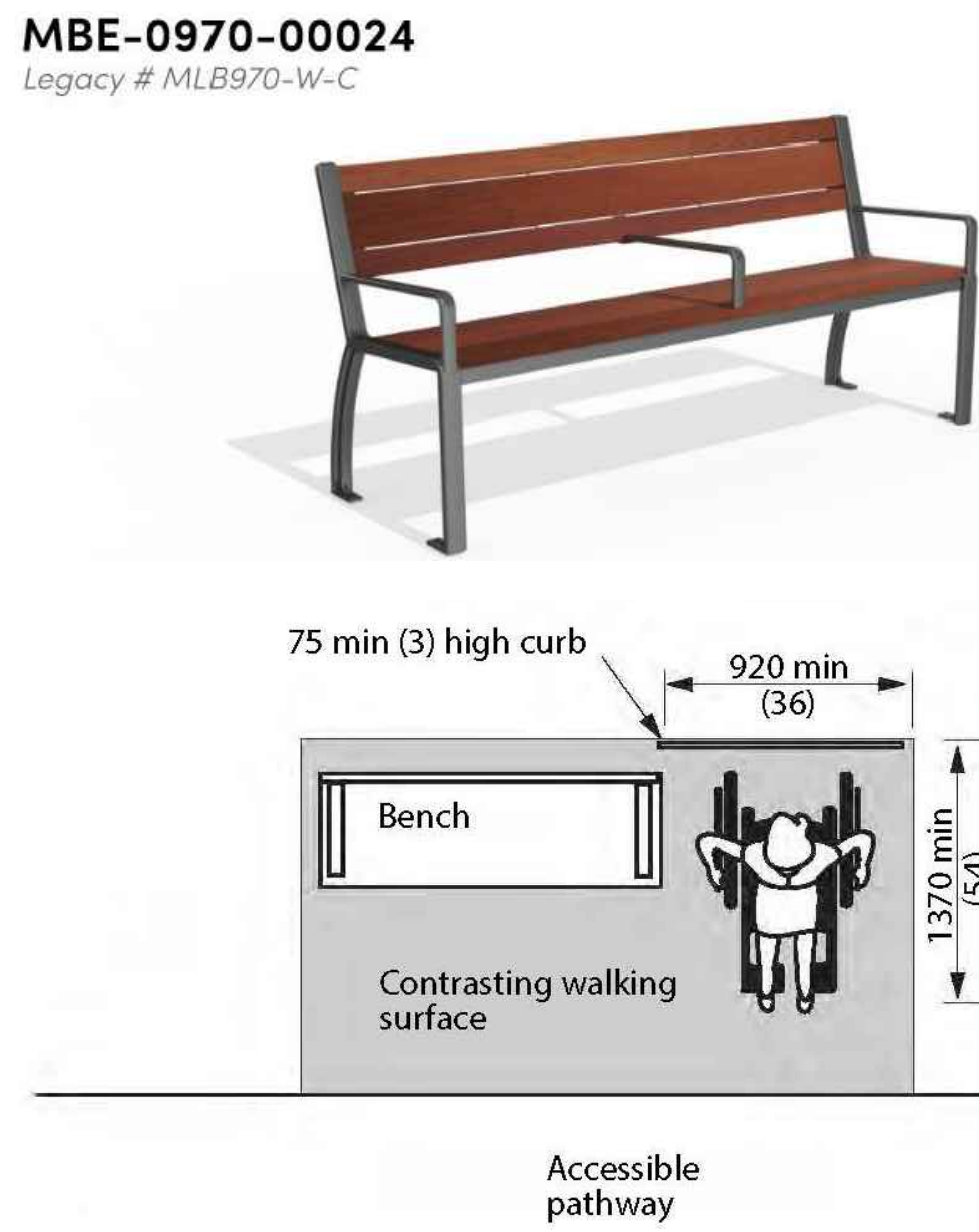
4 BIKE RACKS BY HAUSER
N.T.S



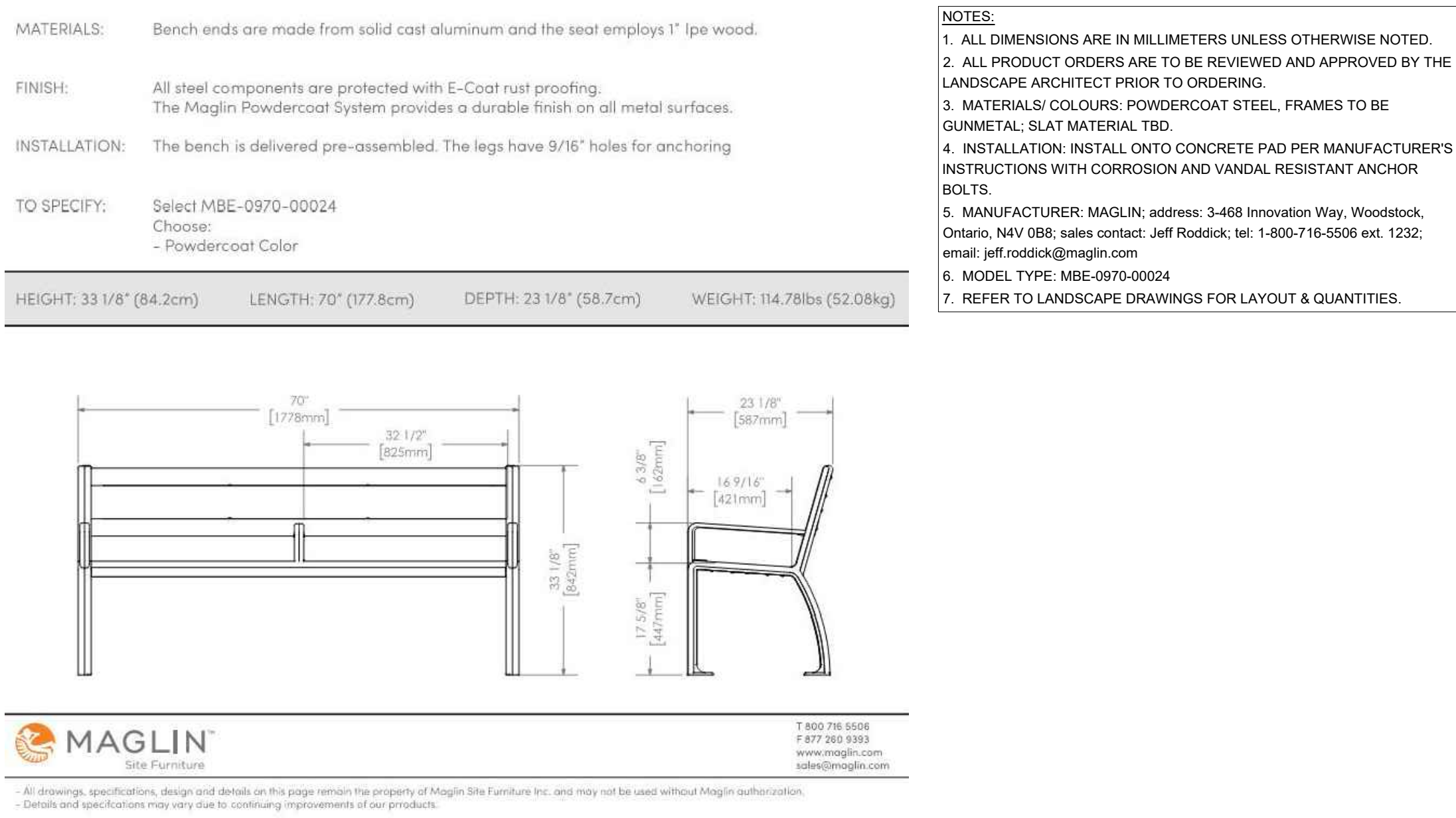
5 SURFACE MOUNT
N.T.S



2 STEEL ENTRY BOLLARDS BY ONTARIO BOLLARD
N.T.S



3 SURFACE MOUNT BENCH
N.T.S



NO.	DATE	DESCRIPTION
1	2024-07-26	Issued for Coordination
2	2024-07-31	Issued for 90% CD
3	2024-09-19	Issued for SPA