

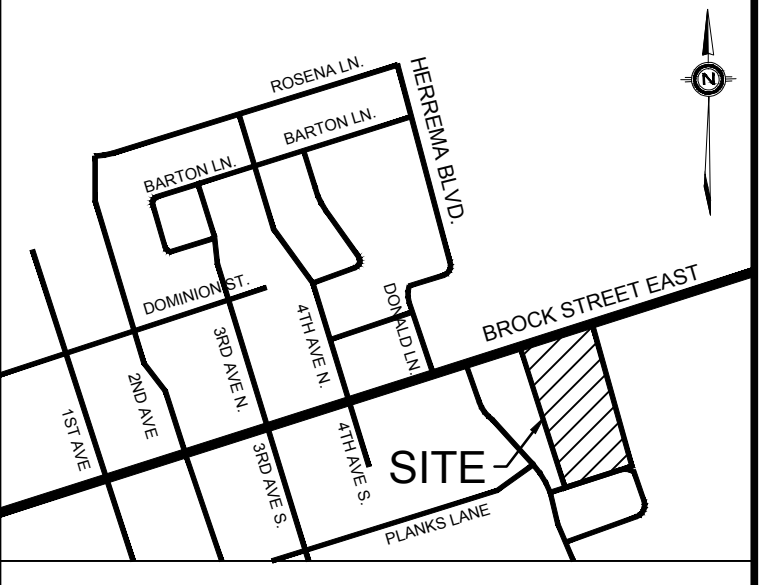
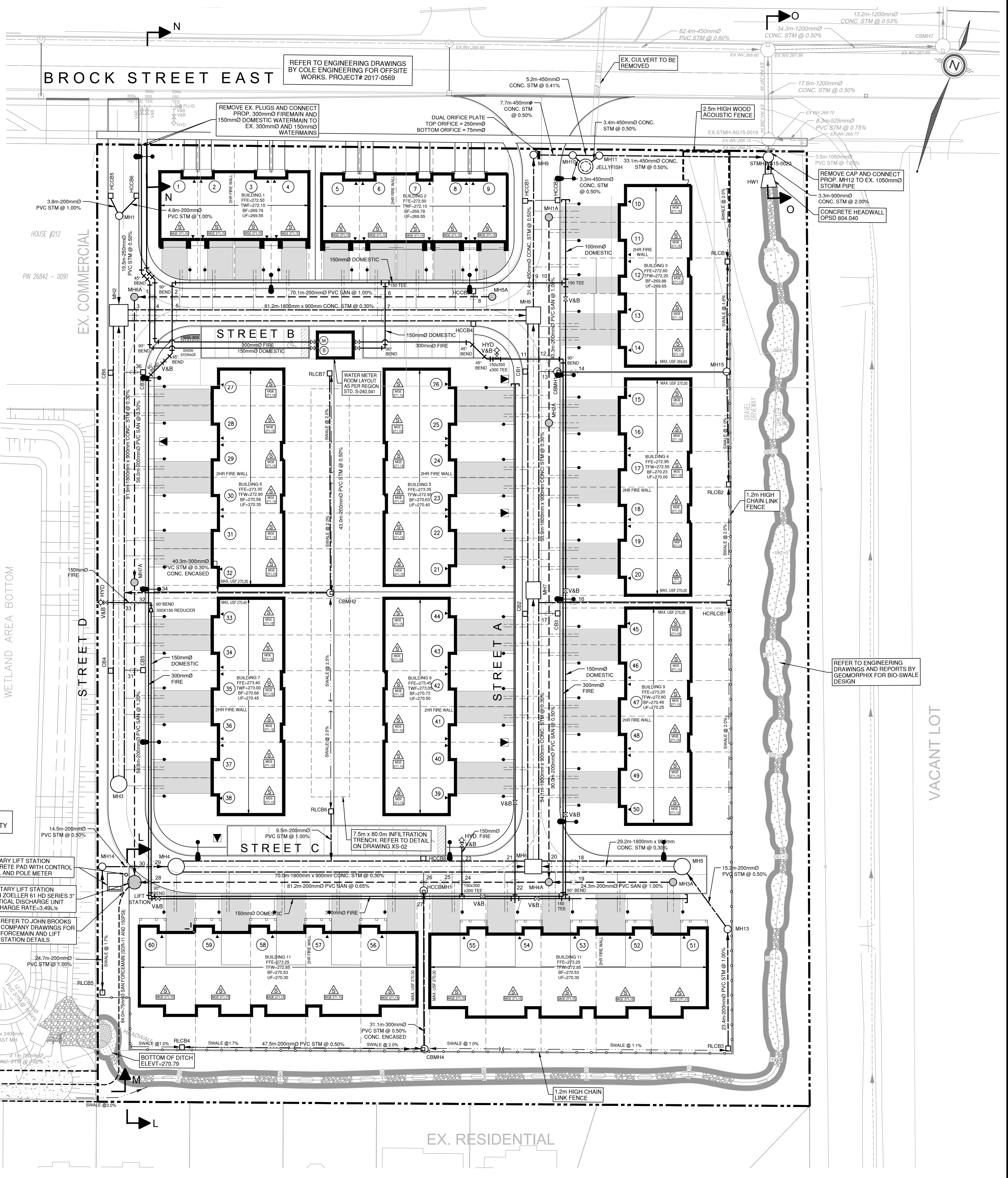
SANITARY SEWER STRUCTURE INVENTORY					
MH #	MH DIAMETER	MH OPSD	FRAME OPSPD	TOP ELEV.	INVERTS
LIFT	2400mm	701.013	401.010	272.50	N 266.90 (200mm) E 266.90 (200mm) SW 266.70 (75mm)
MH-AG15-0107	1200mm	701.010	401.010	274.61	NE 270.48 (200mm) SE 270.39 (200mm) NW 270.39 (200mm)
MH-AG15-0108	1200mm	701.010	401.010	274.82	SW 270.75 (200mm)
MH1A	1200mm	701.010	401.010	271.32	S 268.40 (200mm)
MH2A	1200mm	701.010	401.010	271.58	N 268.00 (200mm) S 267.97 (200mm)
MH3A	1200mm	701.010	401.010	272.42	W 268.52 (200mm)
MH4A	1200mm	701.010	401.010	272.30	N 267.52 (200mm) E 268.28 (200mm) W 267.43 (200mm)
MH5A	1200mm	701.010	401.010	271.61	W 268.70 (200mm)
MH6A	1200mm	701.010	401.010	271.74	N 267.63 (200mm) S 267.60 (200mm)
MH7A	1200mm	701.010	401.010	272.02	

STORM SEWER STRUCTURE INVENTORY					
MH #	MH DIAMETER	MH OPSD	FRAME OPSPD	TOP ELEV.	INVERTS
CBMH1	1200mm	701.010	400.030	271.47	E 269.83 (250mm) W 269.80 (250mm)
CBMH2	1200mm	701.010	400.030	272.21	N 270.62 (200mm) W 270.53 (300mm)
CBMH4	1200mm	701.010	400.030	271.82	W 270.76 (200mm) N 270.65 (300mm)
HCCB1	1200mm	701.010	STEPCON 5101	272.18	S 270.50 (300mm) N 270.71 (200mm)
JELLYFISH	2400mm	701.013	JF8-8.2	271.54	NE 269.12 (450mm) W 269.29 (450mm)
MH2	2400mm X 2900mm	N/A	401.010	271.76	S 270.08 (1800mm X 900mm) E 269.97 (250mm) E 269.99 (1800mm X 900mm)
MH3	3000mm	701.014	401.010	272.22	N 270.36 (1800mm X 900mm)
MH4	3000mm	701.014	401.010	272.42	W 270.69 (200mm) E 270.34 (1800mm X 900mm)
MH5	3000mm	701.014	401.010	272.43	SE 270.28 (200mm) W 270.22 (1800mm X 900mm)
MH6	2400mm X 2900mm	N/A	401.010	272.28	W 270.13 (1800mm X 900mm) E 270.13 (1800mm X 900mm) N 269.97 (250mm) N 269.95 (1800mm X 900mm)
MH7	2400mm X 2900mm	N/A	401.010	271.83	S 269.88 (1800mm X 900mm) N 269.85 (1800mm X 900mm) N 269.66 (450mm)
MH8	2400mm X 2900mm	N/A	401.010	271.42	S 269.69 (1800mm X 900mm) E 269.41 (450mm)
MH9	1200mm	701.010	401.010	271.40	S 269.50 (450mm) E 269.41 (450mm)
MH10	1200mm	701.010	401.010	271.54	W 269.37 (450mm) E 269.34 (450mm) E 269.31 (450mm)
MH11	1200mm	701.010	401.010	271.35	W 269.96 (450mm) E 269.96 (450mm) SW 269.14 (450mm)
MH13	1200mm	701.010	401.010	272.89	S 270.41 (200mm) NW 270.35 (200mm)
MH14	1200mm	701.010	401.010	272.55	S 271.04 (200mm) E 270.97 (200mm)
MH15	1200mm	701.010	401.010	271.46	N 270.18 (200mm) S 270.03 (200mm) W 270.01 (1800mm X 900mm) N 269.22 (1050mm)
STMH-AG15-0023	1800mm	701.012	401.010	271.39	S 269.03 (900mm) E 268.99 (450mm) N 268.22 (1050mm)

CATCHBASIN STRUCTURE INVENTORY				
CB #	CB STD.	FRAME OPSPD	TOP ELEV.	INVERTS
CB1	705.010	400.030	271.47	270.07 (200mm)
CB2	705.010	400.030	271.83	270.43 (200mm)
CB3	705.010	400.030	271.83	270.43 (200mm)
CB4	705.010	400.030	272.07	270.43 (200mm)
CB5	705.010	400.030	272.07	270.67 (250mm)
CB6	705.010	400.030	271.78	270.38 (200mm)
CB7	705.010	400.030	271.78	270.38 (200mm)
HCCB1	705.010	STEPCON 5101	271.27	269.87 (75mm)
HCCB2	705.010	STEPCON 5101	271.27	269.87 (200mm)
HCCB3	705.010	STEPCON 5101	271.26	269.86 (200mm)
HCCB4	705.010	STEPCON 5101	271.26	269.86 (200mm)
HCCB5	705.010	STEPCON 5101	271.62	270.22 (200mm)
HCCB6	705.010	STEPCON 5101	271.62	270.22 (200mm)
HCCB8	705.010	STEPCON 5101	272.18	270.76 (250mm)
HCRLCB1	705.010	STEPCON 5101	271.61	270.41 (900mm)
RLCB1	705.010	400.030	271.24	270.40 (200mm)
RLCB2	705.010	400.030	271.24	270.25 (200mm)
RLCB3	705.010	400.030	271.45	270.65 (200mm)
RLCB4	705.010	400.030	271.95	271.00 (200mm)
RLCB5	705.010	400.030	272.37	271.29 (200mm)
RLCB6	705.010	400.030	272.43	271.03 (200mm)
RLCB7	705.010	400.030	272.03	270.83 (200mm)

PIPE CROSSING INFORMATION		
NO.	DESCRIPTION	DATE
1	WM BOT 268.73 SAN TOP 268.23	1
2	WM BOT 268.78 SAN TOP 268.28	1
3	STM BOT 268.53 SAN TOP 268.03	1
4	STM BOT 268.52 SAN TOP 268.02	1
5	STM BOT 268.51 SAN TOP 268.01	1
6	STM BOT 268.49 SAN TOP 267.99	1
7	STM BOT 268.39 SAN TOP 267.89	1
8	STM BOT 268.38 SAN TOP 267.88	1
9	STM BOT 268.37 SAN TOP 267.87	1
10	WM BOT 268.37 SAN TOP 267.87	1
11	STM BOT 268.27 SAN TOP 267.77	1
12	WM BOT 268.62 SAN TOP 268.12	1
13	STM BOT 268.79 SAN TOP 268.29	1
14	WM BOT 268.89 SAN TOP 268.39	1
15	STM BOT 269.12 SAN TOP 268.62	1
16	STM BOT 269.10 SAN TOP 268.60	1
17	STM BOT 270.41 SAN TOP 269.91	1
18	STM BOT 269.60 SAN TOP 269.10	1
19	STM BOT 269.59 SAN TOP 269.09	1
20	STM BOT 269.58 SAN TOP 269.08	1
21	STM BOT 269.57 SAN TOP 269.07	1
22	STM BOT 269.56 SAN TOP 269.06	1
23	STM BOT 269.55 SAN TOP 269.05	1
24	STM BOT 269.54 SAN TOP 269.04	1
25	STM BOT 269.53 SAN TOP 269.03	1
26	STM BOT 270.74 SAN TOP 269.24	1
27	STM BOT 270.73 SAN TOP 269.23	1
28	STM BOT 270.72 SAN TOP 269.22	1
29	STM BOT 270.71 SAN TOP 269.21	1
30	STM BOT 270.70 SAN TOP 269.20	1
31	STM BOT 270.69 SAN TOP 269.19	1
32	STM BOT 270.68 SAN TOP 269.18	1
33	STM BOT 270.67 SAN TOP 269.17	1
34	STM BOT 270.66 SAN TOP 269.16	1
35	STM BOT 270.65 SAN TOP 269.15	1
36	STM BOT 270.64 SAN TOP 269.14	1
37	STM BOT 270.63 SAN TOP 269.13	1
38	STM BOT 270.62 SAN TOP 269.12	1

NOTE:  
 1. ALL UNITS TO BE EQUIPPED WITH PRESSURE REDUCING VALVES.  
 2. ALL HYDRANTS TO HAVE 150mm SERVICES LEADS.



**LEGEND**

- PROPERTY LINE
- PROPOSED STORM PIPE
- PROPOSED SANITARY PIPE
- PROPOSED WATER
- PROPOSED 90° VERTICAL BEND
- PROPOSED SANITARY MANHOLE
- PROPOSED STORM MANHOLE
- PROPOSED CATCH BASIN MANHOLE
- PROPOSED CATCH BASIN
- PROPOSED OGS
- EXISTING MANHOLE
- EXISTING CATCH BASIN
- PROPOSED VALVE AND BOX
- PROPOSED FIRE HYDRANT
- PROPOSED SIAMESE CONNECTION
- SUMP PUMP
- LOT NUMBER
- PROPOSED BACKFLOW PREVENTOR
- PROPOSED WATER METER
- HYDRO TRANSFORMER
- SUMP PUMP
- MINIMUM GOOSE NECK ELEVATION
- PROPOSED LIGHT STANDARD
- PROPOSED 2.5m HIGH WOOD ACOUSTIC FENCE (SEE LANDSCAPE DWG'S FOR DETAILS)
- PROPOSED 1.2m HT CHAIN LINK FENCE (SEE LANDSCAPE DWG'S FOR DETAILS)

**LIST OF DRAWINGS**

- SG-01 - SITE GRADING PLAN
- SS-01 - SITE SERVICING PLAN
- XS-01 - CROSS SECTIONS
- CS-02 - CROSS SECTIONS
- EC-01 - EROSION CONTROL PLAN - PHASE 1
- EC-02 - EROSION CONTROL PLAN - PHASE 2
- EC-03 - EROSION CONTROL PLAN - PHASE 3
- EC-04 - EROSION CONTROL DETAILS
- DD-01 - DETAILS
- DD-02 - DETAILS

SITE PLAN INFORMATION		SURVEYOR INFORMATION	
ICR ASSOCIATES INCORPORATED 12 SANDBOURNE CRESCENT TORONTO, ONTARIO L4K 4B5 PHONE: (416) 499-9427 E-MAIL: icr.oes@gmail.com		H.F. GRANDER Co. LTD. 1575 HIGHWAY 7A WEST, UNIT 2A PORT FERRIER, ONTARIO L1L 1A6 PHONE: (905) 965-3600 FAX: (905) 965-2347	

NO.	REVISION	DATE	BY
4	ISSUED FOR SITE PLAN APPROVAL	SEP 28, 2021	LMV
4	ISSUED FOR SITE PLAN APPROVAL	MAR 19, 2021	PS
3	RE-ISSUED FOR ZONING APPROVAL	MAR 15, 2019	LMV
2	ISSUED FOR COORDINATION	SEPT 5, 2018	TVL
1	ISSUED FOR ZONING APPROVAL	AUG 10, 2018	LMV



TOWN OF UXBRIDGE  
 REGION OF DURHAM  
 WESTLANE DEVELOPMENT GROUP LTD.  
 SOUTH BROCK STREET DEVELOPMENT  
 UXBRIDGE, ONTARIO

**SITE SERVICING PLAN**

DESIGNED BY: LMV	DATE: JUNE 2018	CHECKED BY: JL
DRAWN BY: LMV	PROJECT NO: 2018-0302	DRAWING NO: SS-01
SCALE: 1:400		