

Legend

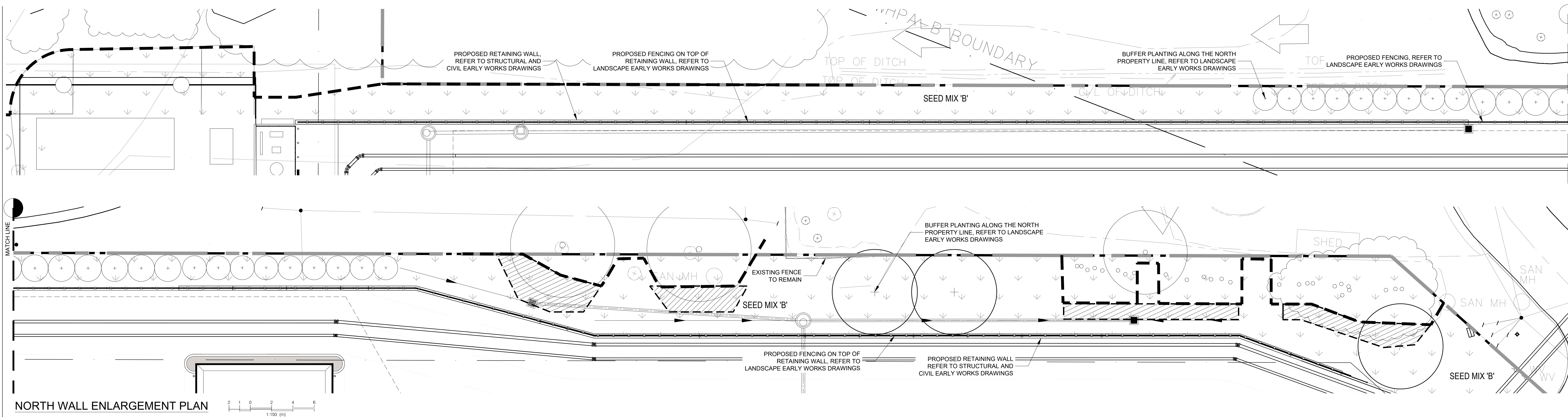
Health and Structural Condition	Recommended Action
E - Excellent	P Protect, monitor and maintain
G - No defects, well-developed crown	R Remove
F - Minor defects or symptoms of disease	Rc Remove due to construction
P - Major defects or symptoms of disease	- Remove with municipal approval
Dead	- Remove with neighbours approval
	T Transplant

Tree Inventory  
Species of significant size 100mm DBH or greater

Site Date: September 26 2023, February 03 2025.  
Field Personnel: GSP Group - Summer Scott (Arborist), Olivia Sobietta  
Tree locations approximated in field - no survey provided  
# - tagged by others

Tree No.	Botanical Name	Common Name	Stems	DBH (cm)	Drip Line Radius (m)	Municipal Property	Subject Property	Adjacent Property (8m to P.L.)	Health Condition	Structure Condition	Comments	Recommended Action	Reason
1301	Populus spp	Poplar spp	1	12	1	x	F	F	F			R	Remove due to proposed development
1302	Populus spp	Poplar spp	1	14	1	x	F	F	F			R	Remove due to proposed development
1303	Populus spp	Poplar spp	1	10	1	x	F	F	F			R	Remove due to proposed development
1304	Populus spp	Poplar spp	1	20.5	1.5	x	F	F	F			R	Remove due to proposed development
1305	Populus spp	Poplar spp	1	17	1	x	F	F	F			R	Remove due to proposed development
1306	Thuja spp	Cedar spp	1	39	2.5	x	G	G	G			R	Remove due to proposed development
1307	Thuja spp	Cedar spp	1	23	2.5	x	G	G	G			R	Remove due to proposed development
1308	Thuja spp	Cedar spp	1	22.5	2.5	x	G	G	G			R	Remove due to proposed development
1309	Thuja spp	Cedar spp	1	25	2	x	G	G	G			R	Remove due to proposed development
1310	Thuja spp	Cedar spp	1	33	1	x	G	G	G			R	Remove due to proposed development
1311	Thuja spp	Cedar spp	1	25	1	x	G	G	G			R	Remove due to proposed development
1312	Thuja spp	Cedar spp	3	45	2	x	F	F	3 leaders			R	Remove due to proposed development
1313	Thuja spp	Cedar spp	1	20	1	x	D	P	Dead			R	Remove due to proposed development
1314	Acer negundo	Manitoba Maple	1	11	2	x	F	G	F			R	Remove due to proposed development
1315	Prunus serotina	Black Cherry	1	13.5	1	x	G	G	G			R	Remove due to proposed development
1316	Thuja spp	Cedar spp	1	36	3	x	F	F	F			P	
1317	Thuja spp	Cedar spp	1	16	1.5	x	P	F	P			P	
1318	Thuja spp	Cedar spp	1	40	3	x	D	P	Dead			P	
1319	Thuja spp	Cedar spp	1	40	2.5	x	G	G	G			P	
1320	Thuja spp	Cedar spp	1	10.5	0.5	x	G	G	G			P	
1321	Thuja spp	Cedar spp	1	10.5	0.5	x	P	P	Dead			P	
1322	Thuja spp	Cedar spp	1	28.5	3	x	G	G	G			P	
1323	Thuja spp	Cedar spp	1	26	2	x	G	G	G			P	
1324	Thuja spp	Cedar spp	1	15	1.5	x	F	F	F			P	
1325	Rhamnus spp	Buckthorn	1	10	1.5	x	F	F	F			P	
1326	Rhamnus spp	Buckthorn	1	15	1.5	x	P	P	P			P	
1327	Rhamnus spp	Buckthorn	1	15	1.5	x	P	P	P			P	
1328	Rhamnus spp	Buckthorn	1	15	1.5	x	P	P	P			P	
1329	Thuja spp	Cedar spp	1	23	3	x	F	F	F			P	
1330	Populus tremuloides	Trembling aspen	1	14.5	x	G	G	G	Slight Lean			P	
1331	Thuja spp	Cedar spp	1	40	2.5	x	G	G	G			P	
1332	Populus spp	Poplar spp	1	16	1.5	x	G	G	G			P	
1333	Thuja spp	Linden spp	1	41.5	3.5	x	F	G	F			P	
1344	Acer platanoides	Norway Maples	1	38.5	4.5	x	G	F	Crack down side, slight lean			P	
1345	Picea glauca	White Spruce	1	39	3	x	F	F	Some dead branches			P	
1346	Tilia cordata	Linden	1	4	4	x	G	F	Slight lean towards fence			P	
1347	Tilia cordata	Linden	1	32	2.5	x	G	F				P	
1350	Tilia cordata	Linden	1	41	2.5	x	G	F				P	
1351	Picea pungens	Blue Spruce	1	45.5	3	x	F	F	Some dead branches			R	Remove due to proposed development
1352	Tilia cordata	Linden	1	44.5	4	x	G	G	G			R	Remove due to proposed development
1353	Tilia cordata	Linden	1	30.5	2.5	x	G	G	G			R	Remove due to proposed development
1354	Acer negundo	Manitoba Maple	1	22.5	2	x	F	P	Leaning			P	
1355	Acer negundo	Manitoba Maple	1	16.5	2	x	F	P	Leaning			P	
A	Populus spp	Poplar spp	1	21	1.5	x	F	G	F			P	
B	Populus spp	Poplar spp	1	15	1	x	F	F	F			P	
C	Populus spp	Poplar spp	1	19	1	x	F	F	F			P	
D	Populus spp	Poplar spp	1	18	1	x	F	F	F			P	
E	Populus spp	Poplar spp	1	19	1	x	F	F	F			P	
G	Thuja spp	Cedar spp	1	28	2.5	x	G	G	G			R	Remove due to proposed development
H	Thuja spp	Cedar spp	1	31	3	x	G	G	G			R	Remove due to proposed development
I	Thuja spp	Cedar spp	1	46	3	x	F	G	Large hole in trunk			R	Remove due to proposed development
J	Thuja spp	Cedar spp	1	44	3	x	G	G	G			R	Remove due to proposed development
K	Thuja spp	Cedar spp	1	35	3	x	G	G	G			R	Remove due to proposed development
L	Thuja spp	Cedar spp	1	25	2.5	x	G	G	G			R	Remove due to proposed development
M	Thuja spp	Cedar spp	1	23	2	x	G	G	G			R	Remove due to proposed development
N	Acer platanoides	Norway Maple	1	23	2	x	G	F	F			P	
O	Picea glauca	White Spruce	1	46	5	x	G	G	G			R	Remove due to proposed development
P	Thuja spp	Cedar spp	3	30	1.5	x	F	F	F			R	Remove due to proposed development
Q	Thuja spp	Cedar spp	1	34	2	x	F	F	F			R	Remove due to proposed development
R	Thuja spp	Cedar spp	1	41	1	x	P	P	Large Lean			R	Remove due to proposed development
S	Rhamnus spp	Buckthorn spp	8	8x10	1.5	x	F	F	F			R	Remove due to proposed development
T	Populus spp	Poplar spp	7	45, 6x40	3	x	G	F	F			R	Remove due to proposed development
U	Populus spp	Poplar spp	4	15, 10x8.5	1	x	F	F	F			R	Remove due to proposed development
V	Thuja spp	Cedar spp	2	20	1	x	F	F	F			P	
W	Thuja spp	Cedar spp	1	12	0.5	x	P	P	Dead			P	
X	Populus spp	Poplar spp	1	15	35, 35, 33	1.5	x	F	F			P	
Y	Populus spp	Poplar spp	6	35	1.5	x	F	F	F			P	
Z	Juglans nigra	Black Walnut	1	28	2	x	F	F	F			P	
A1	Pinus sylvestris	Scots Pine	1	60	5	x	G	G	G			P	
K1	Pinus sylvestris	Scots Pine	1	30	4	x	G	G	G			R	Remove due to proposed grading
L1	Pinus sylvestris	Scots Pine	1	25	3	x	G	G	G			R	Remove due to proposed grading
M1	Pinus sylvestris	Scots Pine	1	22	3	x	G	G	G			R	Remove due to proposed grading
N1	Pinus sylvestris	Scots Pine	1	30	3	x	G	G	G			R	Remove due to proposed grading
O1	Pinus sylvestris	Scots Pine	1	25	2	x	G	G	G			R	Remove due to proposed grading
P1	Pinus sylvestris	Scots Pine	1	25	2	x	G	G	G			R	Remove due to proposed grading
Q1	Pinus sylvestris	Scots Pine	1	25	2	x	G	G	G			R	Remove due to proposed grading
R1	Populus tremuloides	Trembling Aspen	1	22	1.5	x	G	G	G			R	Remove due to proposed grading
S1	Pinus sylvestris	Scots Pine	1	20	2	x	G	G	G			R	Remove due to proposed grading
T1	Pinus resinosa	Red Pine	1	30	2	x	G	G	G			R	Remove due to proposed grading
U1	Populus tremuloides	Trembling Aspen Cluster (20 trees)	1	45 to 20	2	x	G	G	G			P	
V1	Pinus spp	White Pines/Red Pines (30 Trees)	1	45 to 20	2	x	G	G	G			P	
W1	Prunus serotina	Black Cherry (20 trees)	1	15 to 8	1.5	x	G	F	F			R	Remove due to proposed grading
X1	Thuja spp	Cedar spp	1	45	2.5	x	G	G	G			P	
Y1	Thuja spp	Cedar spp	1	42	2.5	x	G	G	G			P	
Z1	Thuja spp	Cedar spp	1	40	2.5	x	G	G	G			P	
A2	Thuja spp	Cedar spp	1	38	2.5	x	G	G	G			P	
B2	Populus spp	Poplar spp	1	32.5	1.5	x	G	G	G			P	
C2	Picea pungens	Blue Spruce	1	32	1.5	x	G	G	G			P	
D2	Picea pungens	Blue Spruce	1	32	1.5	x	P	F	Dead Branches			P	
E2	Picea pungens	Blue Spruce	1	35	1.5	x	F	F	F			P	
F2	Picea pungens	Blue Spruce	1	36	1.5	x	P	F	Dead Branches			P	
G2	Ulmus spp	Elm spp	1	4.5	0.5	x	F	F	F			P	
H2	Ulmus spp	Elm spp	1	4.5	0.5	x	F	F	F			P	
I2	Ulmus spp	Elm spp	1	4.5	0.5	x	F	F	F			P	
J2	Ulmus spp	Elm spp	1	1	0.5	x	P	F	Dead			P	
K2	Acer spp	Maple spp	1	31	0.5	x	P	F	Dead			P	
L2	Ulmus spp	Elm spp	1	5	1	x	P	P	P			P	
M2	Acer	Maple spp	1	6	0.5	x	P	P	Dead			P	
N2	Prunus spp	Cherry spp	1	4	0.5	x	P	P	Dead			P	
O2	Prunus spp	Cherry spp	1	6	0.5	x	P	P	Dead			P	
X2	Pinus resinosa	Red Pine	4	32 to 40	3	x	F	F	Some dead branches			R	Remove due to proposed development
Y2	Thuja spp	Cedar spp	2	25 to 20	2	x	F	F	F			R	Remove due to proposed development
C3	Acer platanoides	Norway Maples (12 trees)	1	30 to 20	5	x	G	F	F			P	Injure due to proposed grading
D3	Thuja spp	Cedar hedge (19 trees)	1	20 to 10	2	x	G	F	F			P	
E3	Acer spp	Maple spp	4	60 to 80	6.5	x	F	F	Large leans			R	Remove due to proposed grading
F3	Acer platanoides	Norway Maple	1	65	6.5	x	F	F	F			R	Remove due to proposed grading
G3	Thuja spp	Cedar hedge (14 trees)	1	20 to 10	2	x	G	F	F			P	
H3	Acer saccharinum	Silver Maple	1	50	5	x	F	F	F			R	Remove due to proposed grading
I3	Acer saccharinum	Silver Maple	1	45	5	x	F	F	F			P	
J3	Fraxinus spp	Ash spp	1	45	5	x	P	P	P			R	Remove due to grading/potential hazard
K3	Fraxinus & Acer spp	Ash spp, Maple spp (9 trees)	1	40 to 15	4	x	G	G	G			P	
L3	Acer saccharinum	Silver Maple	1	65	5	x	G	G	G			P	Injure due to proposed grading
M3	Acer saccharinum	Silver Maple	1	65	5	x	G	G	G			R	Remove due to proposed grading
N3	Acer saccharinum	Silver Maple	1	54	4	x	F	F	F			P	Injure due to proposed grading
P3	Fraxinus spp (DEAD)	Ash spp (4 Trees)	1	20, 16, 15, 21	3	x	P	P	Lean			P	
Q3	Thuja spp	Cedar spp	1	35	3.5	x	F	F	2 Leaders			R	Remove due to proposed grading
R3	Populus spp	Poplar spp	1	33	0.5	x	P	P	Hazard: Missing leaders			R	Remove due to proposed grading
S3	Populus spp	Poplar spp	1	26	0.5	x	P	P	Hazard: Broken in half			P	
T3	Rhamnus spp	Buckthorn spp	1	39	4	x	F-P	F-P	F-P			P	
U3	Pinus sylvestris (DEAD)	Pine spp	1	30	2.5	x	P	P	P			R	Remove due to proposed grading
V3	Pinus sylvestris (DEAD)	Pine spp	1	30	3.5	x	P	P	P			R	Remove due to proposed grading
W3	Pinus sylvestris	Scots Pine	1	55	4.5	x	F	F	F			R	Remove due to proposed grading
2712	Populus spp	Poplar spp	1	33	3.5	x	G	G	G			P	
2713	Populus spp	Poplar spp	1	41	4	x	G	G	G			P	
2714	Populus spp	Poplar spp	1	33	3.5	x	G	G	G			P	
2715	Fraxinus spp	Ash spp	1	39	11	x	P	P	Lean			R	Remove due to proposed development
2716	Populus spp	Poplar spp	1	15	2	x	G	G	G			P	
2717	Populus spp	Poplar spp	1	25	4.5	x	G	G	G			P	
2718	Pinus sylvestris	Scots Pine	2	45.50	4	x	G	G	G			R	Remove due to proposed grading
2719	Pinus sylvestris	Scots Pine	2	25.8	2.5	x	P	P	P			R	Remove due to proposed grading
2720	Pinus sylvestris	Scots Pine	1	35	4	x	F	F	F			R	Remove due to proposed grading
2721	Pinus sylvestris	Scots Pine	1	40	4	x	G	G	G			R	Remove due to proposed grading





**KEY MAP**  
SITE

**LEGEND**

- EXISTING TREES
- PROPOSED DECIDUOUS TREES
- PROPOSED CONIFEROUS TREES
- PLANTING BED
- SOD
- SEED MIX 'A'
- SEED MIX 'B'
- CONCRETE PAVING
- DECORATIVE CONCRETE PAVING
- GRAVEL PATH
- BENCH
- BIKE RACK
- SAFETY BOLLARD
- EXTENT OF BIOSWALE
- PROPERTY BOUNDARY
- RETAINING WALL (REFER TO STRUCTURAL AND CIVIL EARLY WORKS DRAWINGS)
- FENCING (REFER TO LANDSCAPE EARLY WORKS DRAWINGS)

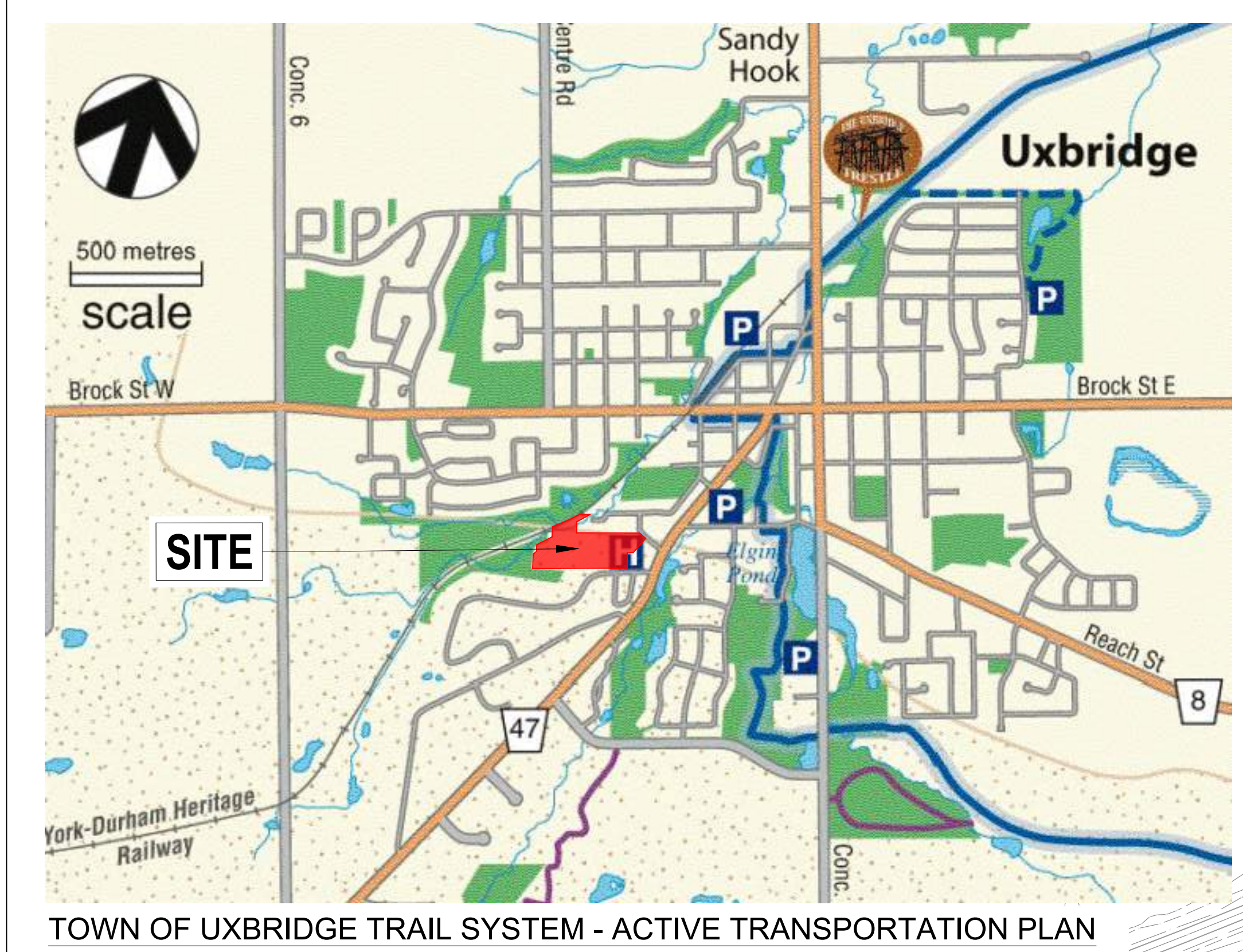
**diamond schmitt**  
**GSP group**

**GENERAL NOTES:**

- DRAWINGS NOT TO BE USED FOR CONSTRUCTION UNLESS AUTHORIZED BY THE LANDSCAPE ARCHITECT
- CONTRACTOR SHALL REPORT ANY DISCREPANCIES BETWEEN THE DRAWINGS AND SITE CONDITIONS PRIOR TO COMMENCEMENT OF THE WORK
- ALL UTILITY LOCATES ARE THE RESPONSIBILITY OF THE CONTRACTOR, HAND IS WITHIN THE LIMITS RECOMMENDED BY THE SERVICE UTILITY. UTILITY CONFLICTS WITH PROPOSED TREE LOCATIONS MUST BE REPORTED IMMEDIATELY TO THE LANDSCAPE ARCHITECT
- BASE DRAWING PROVIDED BY DIAMOND SCHMITT ARCHITECTS
- VEGETATION INVENTORY BY GSP GROUP INC.
- LANDSCAPE DRAWINGS SHOW ENGINEERING INFORMATION FOR DESIGN PURPOSES ONLY. DO NOT CONSTRUCT ENGINEERING WORKS FROM THESE DRAWINGS

**ISSUED**

NO.	DATE	DESCRIPTION
1	2024-04-01	Issued for Schematic Design Coding
2	2024-04-26	Issued for MCH Draft Submission
3	2024-05-02	Issued for Stage 2.1 Block Schematics
4	2024-07-12	Issued for Coordination
5	2024-07-31	Issued for 50% CD
6	2024-09-19	Issued for Site Plan Approval
7	2024-11-08	Issued for Site Plan Approval
8	2024-11-29	Issued for DD Coding
9	2024-12-13	Issued for Draft MCH Stage 2.2 Submission
10	2025-01-23	Issued for Stage 2.2 Sketch Plan
11	2025-01-30	Issued for 100% CD
12	2025-02-06	Issued for Site Plan Approval
13	2025-03-27	Issued for 50% CD
14	2025-04-17	Issued for 50% CD Coding
15	2025-06-12	Issued for Zoning Bylaw Amendment

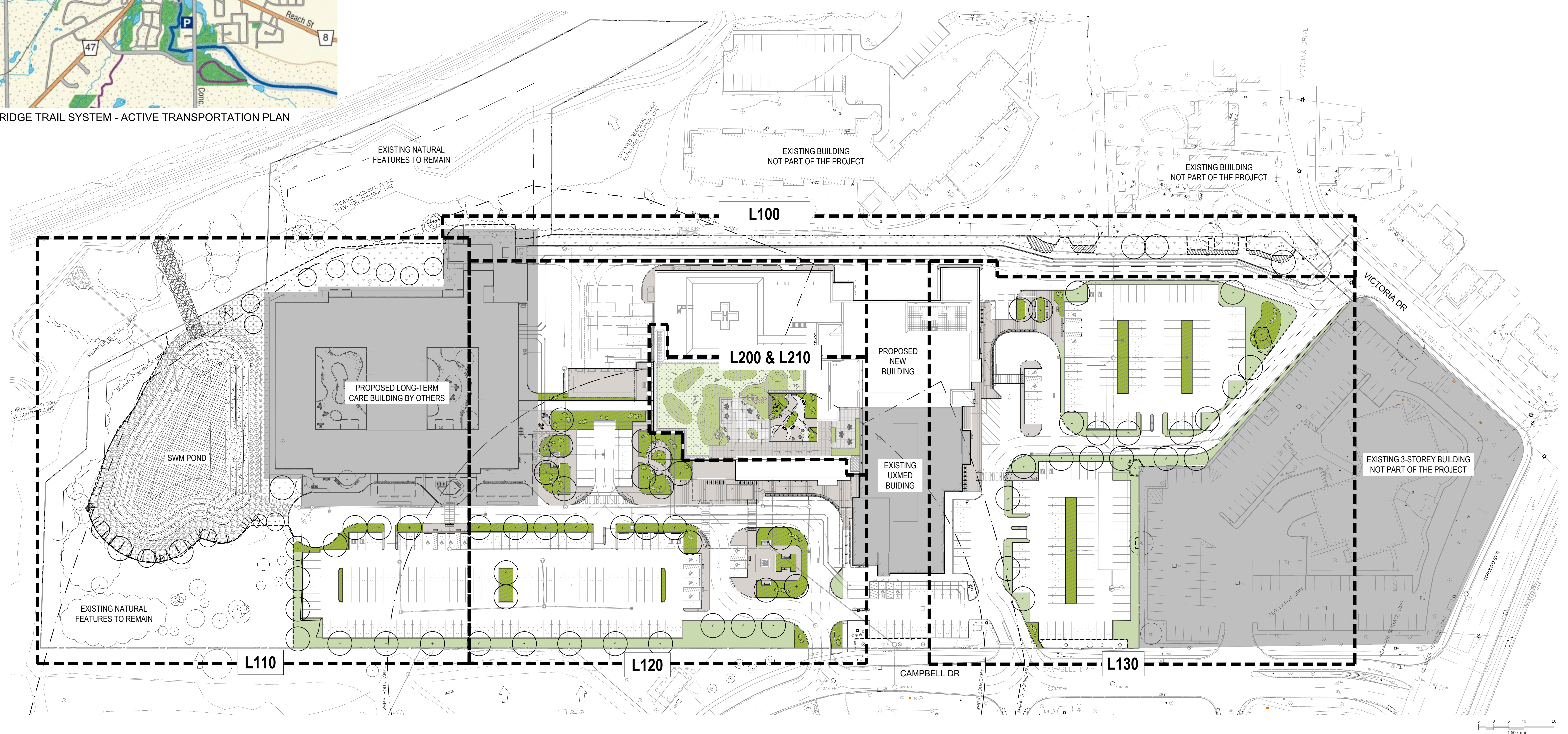


**PEDESTRIAN CIRCULATION NOTE:**

PEDESTRIAN CIRCULATION PLAN SHOWING THE EXISTING TRAILS ADJACENT TO THE SITE. NO IMPACTS TO EXISTING TRAILS DURING OR POST CONSTRUCTION. ON-SITE PEDESTRIAN CIRCULATION CONNECTS TO LOCAL SIDEWALKS AT STREET FRONTAGES.

**NOTE:**

1. FOR THE LANDSCAPE DESIGN WITHIN THE PROPOSED LONG TERM CARE SCOPE OF WORK, REFER TO LONG TERM CARE LANDSCAPE DRAWINGS LP100 - LP220.

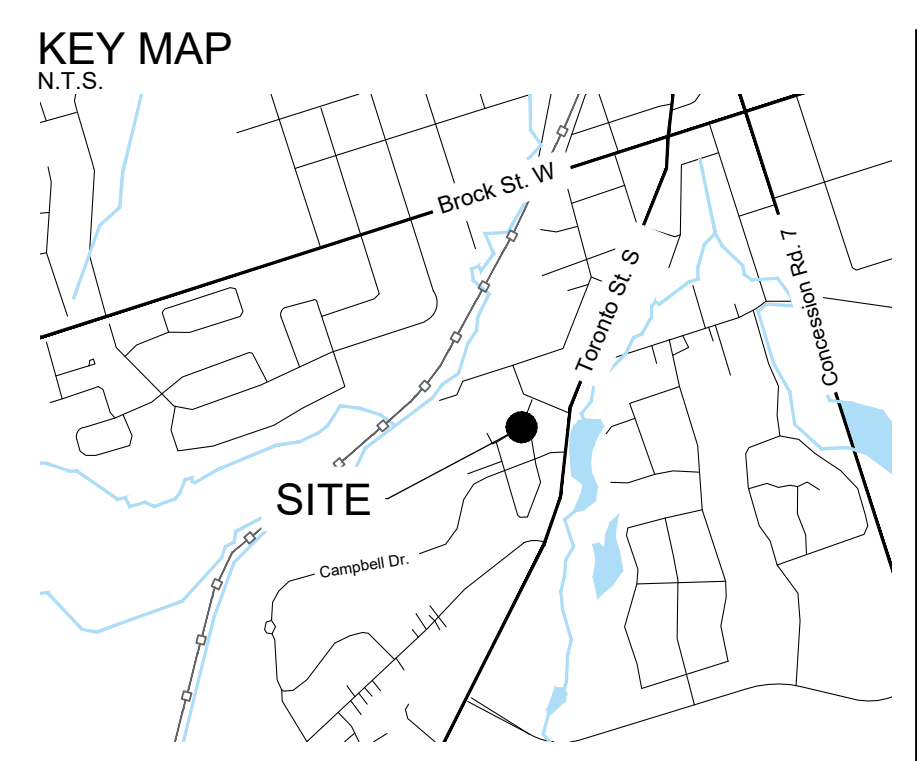


CONTRACTOR MUST CHECK & VERIFY ALL DIMENSIONS ON THE JOB.  
DO NOT SCALE DRAWINGS.  
ALL DRAWINGS, SPECIFICATIONS AND RELATED DOCUMENTS ARE THE COPYRIGHT PROPERTY OF THE ARCHITECT. NO PART OF THIS DOCUMENT IS TO BE REPRODUCED OR TRANSMITTED IN ANY FORM OR BY ANY MEANS, ELECTRONIC OR MECHANICAL, INCLUDING PHOTOCOPYING, RECORDING, OR BY ANY INFORMATION STORAGE AND RETRIEVAL SYSTEM, WITHOUT THE WRITTEN PERMISSION OF THE ARCHITECT.

Uxbridge Hospital  
PROJECT NO. 23175

Landscapes Site Plan  
AS SHOWN  
**L100**





LEGEND

- EXISTING TREES
- PROPOSED DECIDUOUS TREES
- PROPOSED CONIFEROUS TREES
- PLANTING BED
- SOD
- SEED MIX 'A'
- SEED MIX 'B'
- CONCRETE PAVING
- DECORATIVE CONCRETE PAVING
- GRAVEL PATH
- BENCH
- BIKE RACK
- SAFETY BOLLARD
- EXTENT OF BIOSWALE
- PROPERTY BOUNDARY
- RETAINING WALL (REFER TO STRUCTURAL AND CIVIL EARLY WORKS DRAWINGS)

NOTE:

- PLANTING SCHEDULE REFER TO L120
- SWM POND PLANTING REFER TO LANDSCAPE EARLY WORKS DRAWINGS
- FOR THE LANDSCAPE DESIGN WITHIN THE PROPOSED LONG TERM CARE SCOPE OF WORK, REFER TO LONG TERM CARE LANDSCAPE DRAWINGS L120 - L125

- GENERAL NOTES:
- DRAWINGS NOT TO BE USED FOR CONSTRUCTION UNLESS AUTHORIZED BY THE LANDSCAPE ARCHITECT
  - CONTRACTOR SHALL REPORT ANY DISCREPANCIES BETWEEN THE DRAWINGS AND SITE CONDITIONS PRIOR TO COMMENCEMENT OF THE WORK
  - ALL UTILITY LOCATES ARE THE RESPONSIBILITY OF THE CONTRACTOR. HAND DIG WITHIN THE LIMITS RECOMMENDED BY THE SERVICE UTILITY. UTILITY CONFLICTS WITH PROPOSED TREE LOCATIONS MUST BE REPORTED IMMEDIATELY TO THE LANDSCAPE ARCHITECT
  - BASE DRAWING PROVIDED BY DIAMOND SCHMITT ARCHITECTS
  - VEGETATION INVENTORY BY GSP GROUP INC.
  - LANDSCAPE DRAWINGS SHOW ENGINEERING INFORMATION FOR DESIGN PURPOSES ONLY. DO NOT CONSTRUCT ENGINEERING WORKS FROM THESE DRAWINGS

ISSUED

NO.	DATE	DESCRIPTION
1	2024-04-01	Issued for Schematic Design Coding
2	2024-04-26	Issued for MCH Draft Submission
3	2024-05-02	Issued for Stage 2.1 Block Schematics
4	2024-07-12	Issued for Coordination
5	2024-07-31	Issued for 50% CD
6	2024-09-19	Issued for Site Plan Approval
7	2024-11-08	Issued for Site Plan Approval
8	2024-11-29	Issued for DD Coding
9	2024-12-13	Issued for Draft MCH Stage 2.2 Submission
10	2025-01-23	Issued for Stage 2.2 Sketch Plan
11	2025-01-30	Issued for 100% CD
12	2025-02-06	Issued for Site Plan Approval
13	2025-03-27	Issued for 50% CD
14	2025-04-17	Issued for 50% CD Coding
15	2025-06-12	Issued for Zoning Bylaw Amendment

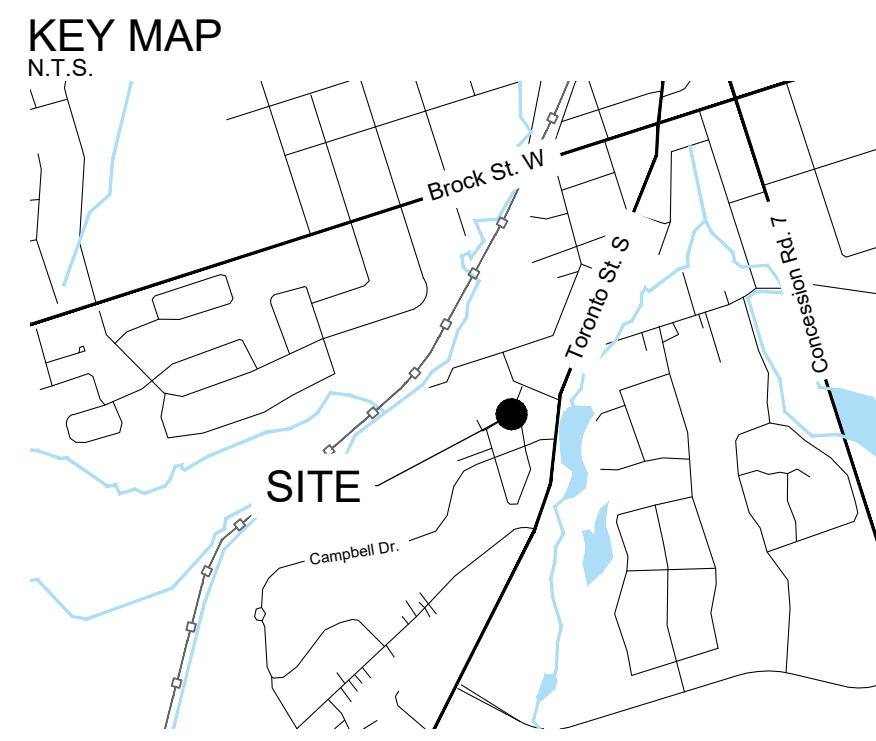
CONTRACTOR MUST CHECK & VERIFY ALL DIMENSIONS ON THE JOB.

DO NOT SCALE DRAWINGS.

ALL DRAWINGS, SPECIFICATIONS AND RELATED DOCUMENTS ARE THE COPYRIGHT PROPERTY OF THE ARCHITECT. NO PART OF THESE DOCUMENTS MAY BE REPRODUCED OR TRANSMITTED IN ANY FORM OR BY ANY MEANS, ELECTRONIC OR MECHANICAL, WITHOUT THE WRITTEN PERMISSION OF THE ARCHITECT.

THIS DRAWING IS NOT TO BE USED FOR CONSTRUCTION UNITS, SIGNED BY THE ARCHITECT.





- GENERAL NOTES:**
1. DRAWINGS NOT TO BE USED FOR CONSTRUCTION UNLESS AUTHORIZED BY THE LANDSCAPE ARCHITECT
  2. CONTRACTOR SHALL REPORT ANY DISCREPANCIES BETWEEN THE DRAWINGS AND SITE CONDITIONS PRIOR TO COMMENCEMENT OF THE WORK
  3. ALL UTILITY LOCATES ARE THE RESPONSIBILITY OF THE CONTRACTOR, HANDS WITHIN THE LIMITS, RECOMMENDED BY THE SERVICE UTILITY. UTILITY CONFLICTS WITH PROPOSED TREE LOCATIONS MUST BE REPORTED IMMEDIATELY TO THE LANDSCAPE ARCHITECT
  4. BASE DRAWING PROVIDED BY DIAMOND SCHMITT ARCHITECTS
  5. VEGETATION INVENTORY BY GSP GROUP INC.
  6. LANDSCAPE DRAWINGS SHOW ENGINEERING INFORMATION FOR DESIGN PURPOSES ONLY. DO NOT CONSTRUCT ENGINEERING WORKS FROM THESE DRAWINGS

**LEGEND**

- EXISTING TREES
- PROPOSED DECIDUOUS TREES
- PROPOSED CONIFEROUS TREES
- PLANTING BED
- SOD
- SEED MIX 'A'
- SEED MIX 'B'
- CONCRETE PAVING
- DECORATIVE CONCRETE PAVING
- GRAVEL PATH
- BENCH
- BIKE RACK
- SAFETY BOLLARD
- EXTENT OF BIOSWALE
- PROPERTY BOUNDARY
- RETAINING WALL (REFER TO STRUCTURAL AND CIVIL EARLY WORKS DRAWINGS)

**NOTE:**

1. FOR THE LANDSCAPE DESIGN WITHIN THE PROPOSED LONG TERM CARE SCOPE OF WORK, REFER TO LONG TERM CARE LANDSCAPE DRAWINGS LP100 - LP200.

NO.	DATE	DESCRIPTION
1	2024-04-01	Issued for Schematic Design Coding
2	2024-04-26	Issued for MCH Draft Submission
3	2024-05-02	Issued for Stage 1 Block Schematics
4	2024-07-12	Issued for Coordination
5	2024-07-31	Issued for 50% CD
6	2024-09-19	Issued for Site Plan Approval
7	2024-11-08	Issued for Site Plan Approval
8	2024-11-29	Issued for DD Coding
9	2024-12-13	Issued for Draft MCH Stage 2.2 Submission
10	2025-01-23	Issued for Stage 2.2 Sketch Plan
11	2025-01-30	Issued for 100% CD
12	2025-02-06	Issued for Site Plan Approval
13	2025-03-27	Issued for 50% CD
14	2025-04-17	Issued for 50% CD Coding
15	2025-06-12	Issued for Zoning Bylaw Amendment

ITEM	DESCRIPTION	CONTACT	QUANTITY
BACKED BENCH	MODEL: MBE-0970-00024 DIMENSIONS (mm): 1778 (L) x 587 (D) x 842 (H) COLOUR: TBD COVERINGS: THERMAL ASH OPTIONS: END ARMS, CENTRE ARM	SUPPLIED BY MAGLIN	13
BIKE RACK	MODEL: PS-79-S5-101-BD-HALO STAINLESS STEEL BIKE PACK DIMENSIONS (mm): 902 (L) x 813 (H)	SUPPLIED BY HAUSER	10

**PROPOSED FURNISHING NOTES:**

1. CONTRACTOR TO PROVIDE SHOP DRAWINGS OF ALL SITE FURNISHING FOR APPROVAL BY CLIENT AND CONSULTANT PRIOR TO ORDERING/MANUFACTURING.

CODE	QTY	BOTANICAL NAME	COMMON NAME	SIZE	CONTAINER	REMARKS
<b>DECIDUOUS TREES</b>						
AFJ	17	Acer x 'freemans' 'Jefferson'	Autumn Blaze Maple	60mm Cal.	W.B.	Native Hybrid
BP	4	Betula papyrifera	Paper Birch	60mm Cal.	W.B.	Native, Salt Tolerant
CCA	3	Cercis canadensis	Eastern Redbud	45mm Cal.	W.B.	Native, Tree Form
CTS	5	Gleditsia inaequalis 'Shademaster'	Shademaster Honeylocust	60mm Cal.	W.B.	Salt Tolerant
GD	9	Gymnocladus dioica	Kentucky Coffee Tree	60mm Cal.	W.B.	Native, Salt Tolerant
OV	3	Ostrya virginiana	Ironwood	60mm Cal.	W.B.	Native, Salt Tolerant
QM	7	Quercus macrocarpa	Burn Oak	60mm Cal.	W.B.	Native, Salt Tolerant
<b>CONIFEROUS SHRUBS</b>						
Jg	64	Juniperus communis 'Green Carpet'	Green Carpet Common Juniper	60cm	3 gal.	0.8 m Salt Tolerant.
<b>DECIDUOUS SHRUBS</b>						
Ap	13	Aronia melanocarpa 'MINAMPEN'	Low Scape Snowfire™ Black Chokeberry	60cm	3 gal.	1.2 m Salt Tolerant.
CsA	17	Cornus sericea 'Arctic Fire'	Arctic Fire Dogwood	50cm	3 gal.	1 m Native cultivar. Salt Tolerant.
Ir	15	Ilex verticillata 'FarrowBPop'	Berry Poppins® Winterberry	60cm	3 gal.	1.5 m Salt Tolerant.
<b>ORNAMENTAL GRASSES</b>						
ang	53	Andropogon gerardii	Big Bluestem	---	1 gal.	0.8 m Native, Salt Tolerant.
caK	214	Calliagrostis acutiflora 'Karl Foerster'	Feather Reed Grass	---	1 gal.	0.7 m Salt Tolerant.
csp	146	Carex pensylvanica	Pennsylvania Sedge	---	1 gal.	0.45 m Moderate Salt Tolerant.
scs	241	Schizachyrium scoparium	Little Bluestem	---	1 gal.	0.6 m Native, Salt Tolerant.
<b>PERENNIALS</b>						
acm	65	Achillea millefolium	Common Yarrow	---	1 gal.	500 mm Native
agf	266	Agastache foeniculum	Blue Giant Hyssop	---	1 gal.	600 mm Native, Salt Tolerant.
as2	88	Allium schoenoprasum	Common Chives	---	1 gal.	600 mm Native, Salt Tolerant.
ana	59	Anaphalis margaritacea	Pearly Everlasting	---	1 gal.	500 mm Native, Salt Tolerant.
az	271	Aronia melanocarpa 'UCONNAM165'	Low Scape Mound® Black Chokeberry	---	1 gal.	650 mm Salt Tolerant.
ana	190	Aster novae-angliae	New England Aster	---	1 gal.	500 mm Native
ao	26	Aster oblongifolius 'October Skies'	October Skies Fall Aster	---	1 gal.	800 mm Salt Tolerant.
ba	25	Baptisia australis	Blue Wild Indigo	---	1 gal.	1,000 mm Salt Tolerant.
bec	49	Bergenia cordifolia	Heartleaf Bergenia	---	1 gal.	400 mm Salt Tolerant.
eum	33	Eupatorium maculatum	Joe Pye Weed	---	1 gal.	1,000 mm Native
gi	90	Geranium macrorrhizum 'Ingwersen's Variety'	Ingwersen's Bigroot Geranium	---	1 gal.	600 mm Salt Tolerant.
get	106	Geum triflorum	Prairie Smoke	---	1 gal.	350 mm Native
hbn	101	Helleborus niger	Christmas Rose	---	1 gal.	400 mm Salt Tolerant.
hb	83	Heuchera x 'blackberry ice'	Blackberry Ice Coral Bells	---	1 gal.	500 mm Salt Tolerant.
hou	25	Hosta x 'Blue Umbrellas'	Blue Umbrellas Hosta	---	1 gal.	1,500 mm Moderate Salt Tolerant.
hy2	126	Hosta x 'Diana Remembered'	Diana Remembered Hosta	---	1 gal.	800 mm Moderate Salt Tolerant.
hy2	24	Hosta x 'Liberty'	Liberty Hosta	---	1 gal.	1,500 mm Moderate Salt Tolerant.
nlp	70	Nepeta x 'fasseni' 'Purrsian Blue'	Purrsian Blue Catmint	---	1 gal.	400 mm Salt Tolerant.
tps	39	Thymus pseudolanuginosus	Woolly Thyme	---	1 gal.	400 mm Salt Tolerant.
yvv	24	Veronicastrum virginicum	Culver's Root	---	1 gal.	700 mm Native

**PROPOSED NEW BUILDING**

SEE L200 & L210  
FOR INTERIOR COURTYARD  
AT GROUND FLOOR

**PROPOSED LONG-TERM  
CARE BUILDING BY OTHERS**

MATCH LINE - A (SEE L110)

MOVABLE TABLES AND  
CHAIRS BY OWNER, TYP.

STONE ELEMENTS IN  
PLANTING BED, TYP.

CONCRETE PLANTER CURB, TYP.

TACTILE INDICATOR  
PLATE, TYP.

PRE-CAST BUMPER CURB  
CURB CUT,  
REFER TO CIVIL

NEW LOCATION FOR  
THE EX. LANDSCAPE  
STRUCTURE

PRE-CAST BUMPER CURB  
CURB CUT,  
REFER TO CIVIL

CONCRETE PLANTER CURB, TYP.

TACTILE INDICATOR  
PLATE, TYP.

ROLLED CURB,  
REFER TO CIVIL

BOLLARD LIGHT,  
REFER TO ELECTRICAL

CANOPY ABOVE

EXISTING CANOPY  
COLUMNS, PLANTING  
BED, CURB, AND  
CONCRETE PAVING  
TO REMAIN

**EXISTING UXMED  
BUILDING**

EXISTING PAVING  
AND SOFTSCAPE  
TO REMAIN

SOD

SOD

CAMBELL DR ENTRANCE

2 1 0 2 4 6  
1:150 (m)

CONTRACTOR MUST CHECK & VERIFY ALL DIMENSIONS ON THE JOB.

DO NOT SCALE DRAWINGS.

ALL DRAWINGS, SPECIFICATIONS AND RELATED DOCUMENTS ARE THE COPYRIGHT PROPERTY OF THE ARCHITECT. THEY MUST BE RETURNED UPON REQUEST. REPRODUCTION OF DRAWINGS, SPECIFICATIONS AND RELATED DOCUMENTS IN PART OR IN WHOLE IS FORBIDDEN WITHOUT THE WRITTEN PERMISSION OF THE ARCHITECT.

THE DRAWING IS NOT TO BE USED FOR CONSTRUCTION UNITS, SIGNED BY THE ARCHITECT.



Uxbridge Hospital

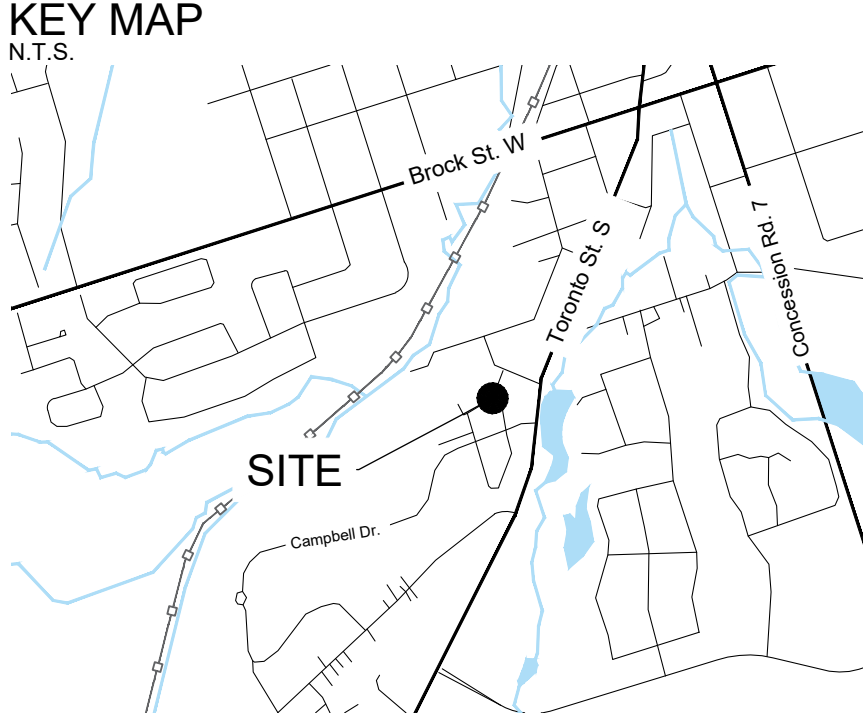
PROJECT NO.: 23175

Landscape Site  
Layout and Planting Plan

1:150

**L120**





LEGEND

- EXISTING TREES
- PROPOSED DECIDUOUS TREES
- PROPOSED CONIFEROUS TREES
- PLANTING BED
- SOD
- SEED MIX 'A'
- SEED MIX 'B'
- CONCRETE PAVING
- DECORATIVE CONCRETE PAVING
- GRAVEL PATH
- BENCH
- BIKE RACK
- SAFETY BOLLARD
- EXTENT OF BIOSWALE
- PROPERTY BOUNDARY
- RETAINING WALL (REFER TO STRUCTURAL AND CIVIL EARLY WORKS DRAWINGS)

- GENERAL NOTES:
- DRAWINGS NOT TO BE USED FOR CONSTRUCTION UNLESS AUTHORIZED BY THE LANDSCAPE ARCHITECT
  - CONTRACTOR SHALL REPORT ANY DISCREPANCIES BETWEEN THE DRAWINGS AND SITE CONDITIONS PRIOR TO COMMENCEMENT OF THE WORK
  - ALL UTILITY LOCATES ARE THE RESPONSIBILITY OF THE CONTRACTOR. HAND DIG WITHIN THE LIMITS RECOMMENDED BY THE SERVICE UTILITY. UTILITY CONFLICTS WITH PROPOSED TREE LOCATIONS MUST BE REPORTED IMMEDIATELY TO THE LANDSCAPE ARCHITECT
  - BASE DRAWING PROVIDED BY DIAMOND SCHMITT ARCHITECTS
  - VEGETATION INVENTORY BY GSP GROUP INC.
  - LANDSCAPE DRAWINGS SHOW ENGINEERING INFORMATION FOR DESIGN PURPOSES ONLY. DO NOT CONSTRUCT ENGINEERING WORKS FROM THESE DRAWINGS

NO.	DATE	DESCRIPTION
1	2024-04-01	Issued for Schematic Design Coding
2	2024-04-26	Issued for MCH Draft Submission
3	2024-05-02	Issued for Stage 2.1 Block Schematics
4	2024-07-12	Issued for Coordination
5	2024-07-31	Issued for 50% CD
6	2024-09-19	Issued for Site Plan Approval
7	2024-11-08	Issued for Site Plan Approval
8	2024-11-29	Issued for CD Coding
9	2024-12-13	Issued for Draft MCH Stage 2.2 Submission
10	2025-01-23	Issued for Stage 2.2 Sketch Plan
11	2025-01-30	Issued for 100% CD
12	2025-02-06	Issued for Site Plan Approval
13	2025-03-27	Issued for 50% CD
14	2025-04-17	Issued for 50% CD Coding
15	2025-06-12	Issued for Zoning Bylaw Amendment

PROPOSED FURNISHING SCHEDULE

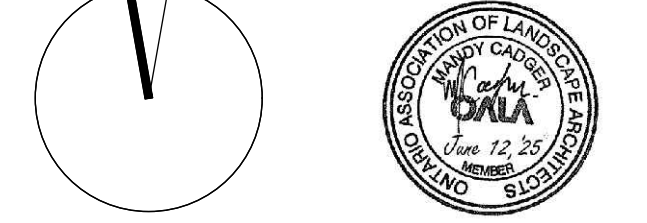
ITEM	DESCRIPTION	CONTACT	QUANTITY
BACKED BENCH	MODEL: MBE-0970-00024 DIMENSIONS (mm): 1778 (L) x 587 (D) x 842 (H) COLOUR: TBD COVERINGS: THERMAL ASH OPTIONS: END ARMS, CENTRE ARM	SUPPLIED BY MAGLIN	8
BIKE RACK	MODEL: PS-79-SS-101-BD-HALO STAINLESS STEEL BIKE PACK DIMENSIONS (mm): 902 (L) x 813 (H)	SUPPLIED BY HAUSER	10

PROPOSED FURNISHING NOTES:

- CONTRACTOR TO PROVIDE SHOP DRAWINGS OF ALL SITE FURNISHING FOR APPROVAL BY CLIENT AND CONSULTANT PRIOR TO ORDERING/MANUFACTURING.

PLANT SCHEDULE EAST

CODE	QTY	BOTANICAL NAME	COMMON NAME	SIZE	CONTAINER	REMARKS
DECIDUOUS TREES						
AFJ	5	Acer x freemantli 'Jeffersred'	Autumn Blaze Maple	60mm Cal.	W.B.	Native Hybrid
BP	2	Betula papyrifera	Paper Birch	60mm Cal.	W.B.	Native: Salt Tolerant.
GTS	8	Gleditsia triacanthos inermis 'Shademaster'	Shademaster Honeylocust	60mm Cal.	W.B.	Salt Tolerant.
QB	5	Quercus bicolor	Swamp White Oak	60mm Cal.	W.B.	Native: Salt Tolerant.
CONIFEROUS SHRUBS						
Jg	59	Juniperus communis 'Green Carpet'	Green Carpet Common Juniper	60cm	3 gal.	0.8 m   Salt Tolerant.
DECIDUOUS SHRUBS						
CsA	13	Cornus sericea 'Arctic Fire'	Arctic Fire Dogwood	50cm	3 gal.	1 m   Native cultivar: Salt Tolerant.
ORNAMENTAL GRASSES						
ang	153	Andropogon gerardii	Big Bluestem	---	1 gal.	0.8 m   Native: Salt Tolerant.
cak	100	Calamagrostis acutiflora 'Karl Foerster'	Feather Reed Grass	---	1 gal.	0.7 m   Salt Tolerant.
sca	55	Scizachyrium scoparium	Little Bluestem	---	1 gal.	0.6 m   Native: Salt Tolerant.
PERENNIALS						
ama	80	Anaphalis margaritacea	Pearly Everlasting	---	1 gal.	500 mm   Native: Salt Tolerant.
ao2	324	Aster obovatangensis	Sky Blue Aster	---	1 gal.	500 mm   Salt Tolerant.
bec	152	Bergenia cordifolia	Heartleaf Bergenia	---	1 gal.	400 mm   Salt Tolerant.
col	14	Coreopsis lanceolata	Lanceleaf Tickseed	---	1 gal.	600 mm   Native: Moderate Salt Tolerant.
gel	24	Geum triflorum	Prairie Smoke	---	1 gal.	350 mm   Native
mol	9	Monarda filifolia	Bergamot	---	1 gal.	800 mm   Native: Salt Tolerant.
nfp	59	Nepeta x faassenii 'Purisian Blue'	Purisian Blue Catmint	---	1 gal.	400 mm   Salt Tolerant.
ruf	332	Rudbeckia fulgida 'Goldsturm'	Black-Eyed Susan	---	1 gal.	500 mm   Salt Tolerant.

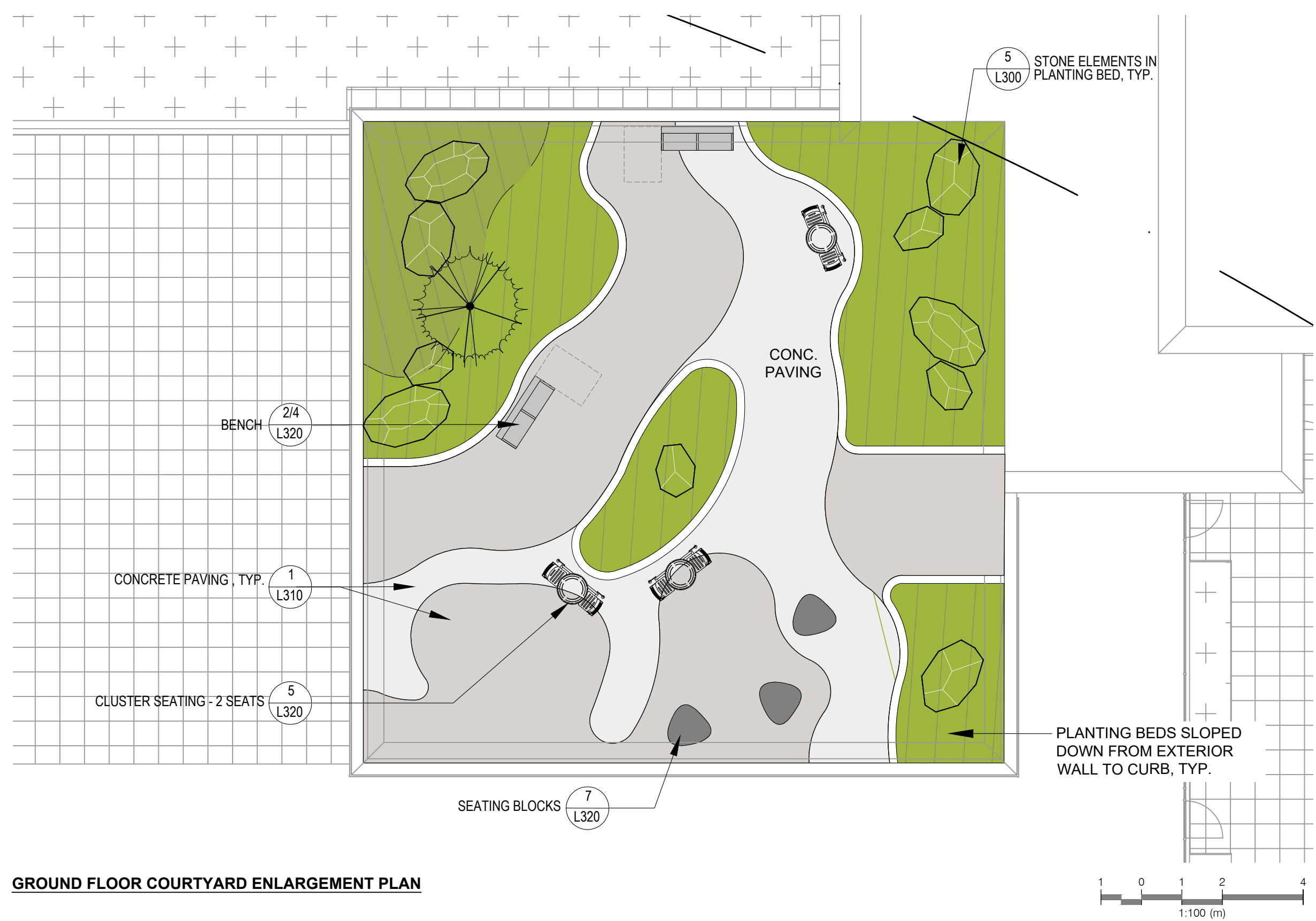
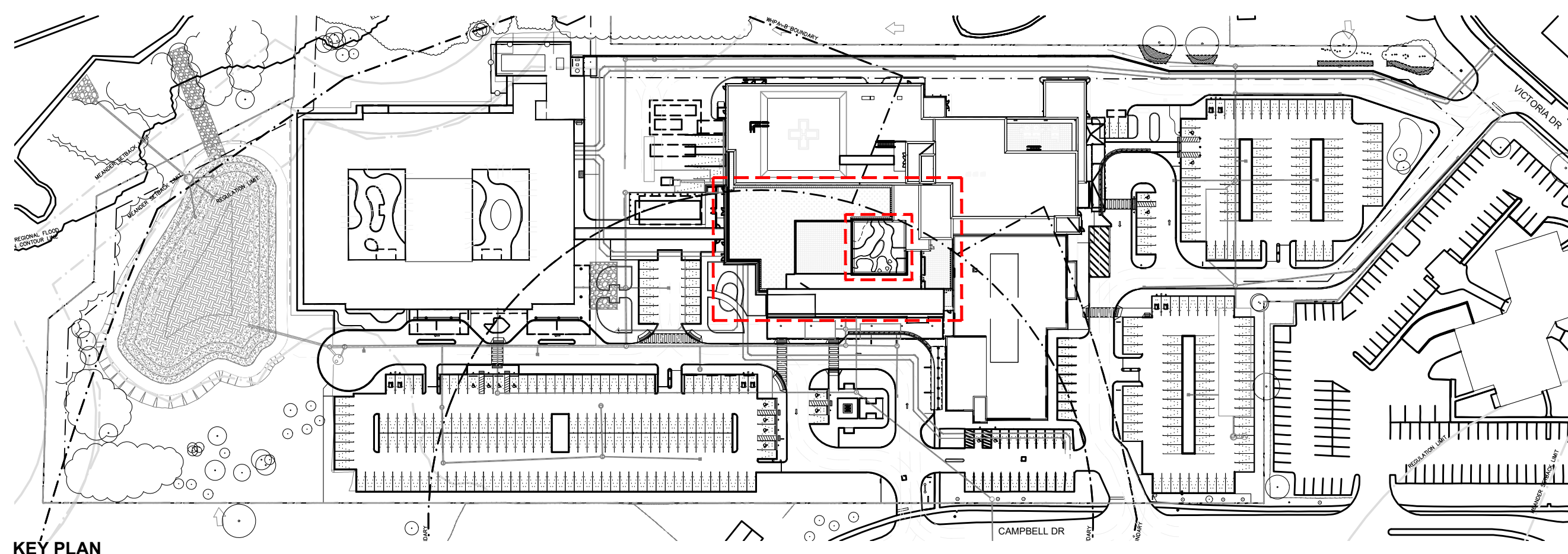


CONTRACTOR MUST CHECK & VERIFY ALL DIMENSIONS ON THE JOB.  
DO NOT SCALE DRAWINGS.  
ALL DRAWINGS, SPECIFICATIONS AND RELATED DOCUMENTS ARE THE COPYRIGHT PROPERTY OF THE ARCHITECT. NO PART OF THESE DOCUMENTS MAY BE REPRODUCED OR TRANSMITTED IN ANY FORM OR BY ANY MEANS, ELECTRONIC OR MECHANICAL, WITHOUT THE WRITTEN PERMISSION OF THE ARCHITECT.





Uxbridge Hospital  
PROJECT NO. 23175

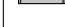




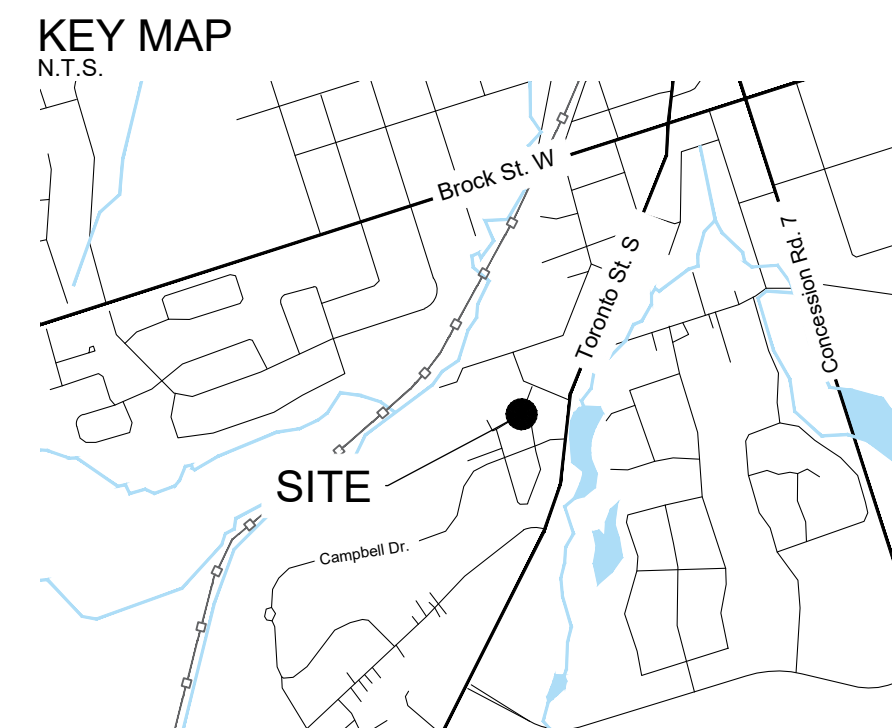


**PROPOSED FURNISHING NOTES:**

1. CONTRACTOR TO PROVIDE SHOP DRAWINGS OF ALL SITE FURNISHING FOR APPROVAL BY CLIENT AND CONSULTANT PRIOR TO ORDERING/MANUFACTURING.

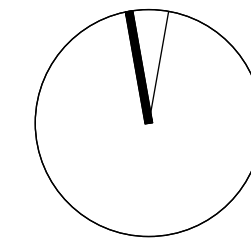
PROPOSED FURNISHING SCHEDULE - COURTYARD				
ITEM	DESCRIPTION	CONTACT	QUAN TITY	
	BACKED BENCH	MODEL: MBE-0970-0002A DIMENSIONS (mm): 1778 (L) X 587 (D) X 842 (H) COLOUR: T8D COVERINGS: THERMAL ASH OPTIONS: END ARMS, CENTRE ARM	SUPPLIED BY MAGLIN	2
	CLUSTER SEATING - 2 SEATS	MODEL: US-102-10-AL SHUTTER MT DIMENSIONS (mm): 1651 (L) X 762 (D) X 813 (H) COLOUR: T8D	SUPPLIED BY HAUSER	3
SEATING BLOCK	MODEL: URBASTYLE - GALET X DIMENSIONS (mm): 1066 (L) X 457 (H) COLOUR: STANDARD CONCRETE	SUPPLIED BY ED'S CONCRETE	3	

PROPOSED FURNISHING SCHEDULE - TERRACE				
ITEM		DESCRIPTION	CONTACT	QUAN TITY
	BACKED BENCH	MODEL: MBE-0970-00024 DIMENSIONS (mm): 1776 (L) x 587 (D) x 842 (H) COLOUR: T8D COVERINGS: THERMAL ASH OPTIONS: END ARMS, CENTRE ARM	SUPPLIED BY MAGLIN	6
	CLUSTER SEATING - 2 SEATS	MODEL: US-102-10-AL SHUTTER MT DIMENSIONS (mm): 1651 (L) x 762 (D) x 813 (H) COLOUR: T8D	SUPPLIED BY HAUSER	4
	CLUSTER SEATING - 4 SEATS	MODEL: US-104-RD-10-AL SONIC BACKLESS DIMENSIONS (mm): 2016 (L) x 1524 (D) x 775 (H) COLOUR: T8D	SUPPLIED BY HAUSER	4



- ### GENERAL NOTES:
1. DRAWINGS NOT TO BE USED FOR CONSTRUCTION UNLESS AUTHORIZED BY THE LANDSCAPE ARCHITECT
  2. CONTRACTOR SHALL REPORT ANY DISCREPANCIES IMMEDIATELY TO THE ARCHITECT UNDER THE CONDITIONS PRIOR TO COMMENCEMENT OF THE WORK
  3. ALL UTILITY LOCATIONS ARE THE RESPONSIBILITY OF THE CONTRACTOR. HAND DIG WITHIN THE LIMITS RECOMMENDED BY THE SERVICE UTILITY UTILITY LOCATIONS MUST BE REPORTED IMMEDIATELY TO THE LANDSCAPE ARCHITECT
  4. BASE DRAWING PROVIDED BY DIAMOND SCHMITT ARCHITECTS.
  5. VEGETATION INVENTORY BY GSP GROUP INC.
  6. LANDSCAPE DRAWINGS SHOW ENGINEERING INFORMATION FOR DESIGN PURPOSES ONLY. DO NOT CONSTRUCT ENGINEERING WORKS FROM THESE DRAWINGS

ISSUED		
NO.	DATE	DESCRIPTION
1	2024-04-01	Issued for Schematic Design Costing
2	2024-04-26	Issued for MOH Draft Submission
3	2024-05-02	Issued for Stage 2 + 1 Block Schematics
4	2024-07-12	Issued for Coordination
5	2024-07-31	Issued for 50%DD
6	2024-09-19	Issued for Site Plan Approval
7	2024-11-28	Issued for Site Plan Approval
8	2024-11-29	Issued for DD Costing
9	2024-12-13	Issued for Draft MOH Stage 2.2 Submission
10	2025-01-23	Issued for Stage 2.2 Sketch Plan
11	2025-01-30	Issued for 100% DD
12	2025-02-06	Issued for Site Plan Approval
13	2025-03-27	Issued for 50% CD
14	2025-04-17	Issued for 50% CD Costing
15	2025-06-12	Issued for Zoning Bylaw Amendment



THIS DRAWING IS NOT TO BE USED FOR CONSTRUCTION UNTIL SIGNED BY THE ARCHITECT.

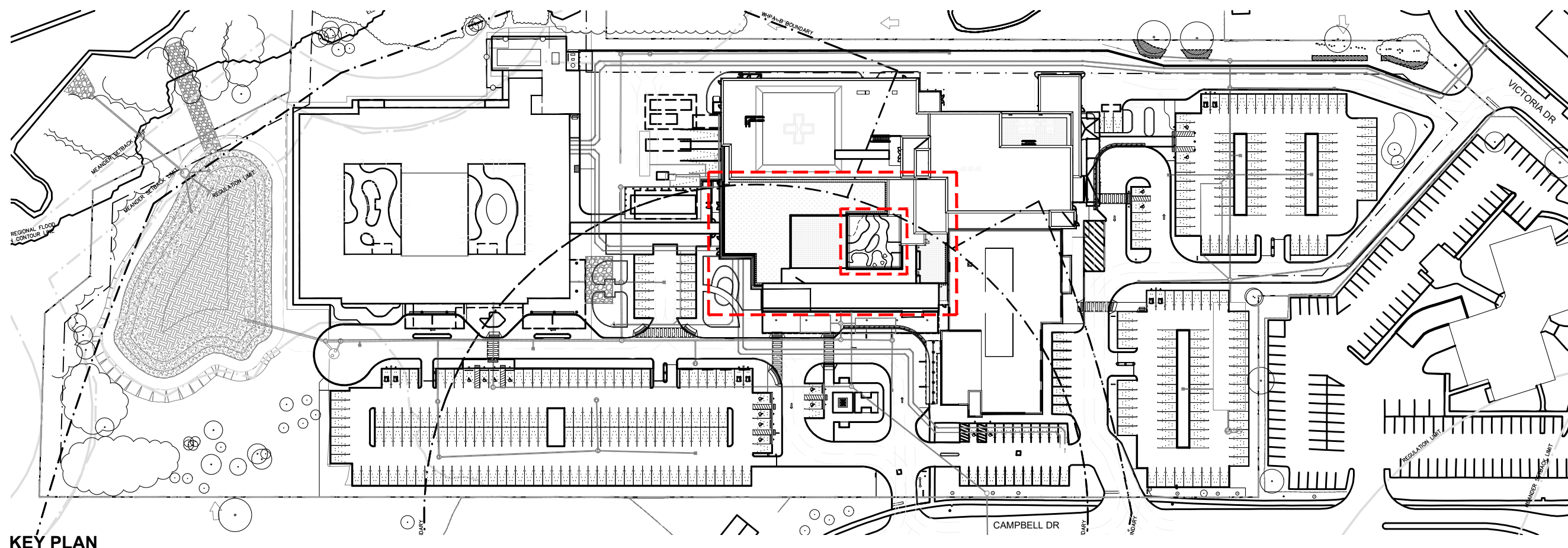


Uxbridge Hospital  
PROJECT NO.: 23175

**Landscape Courtyard and  
Roof Terrace Plan**  
1 : 100

# L200





KEY PLAN



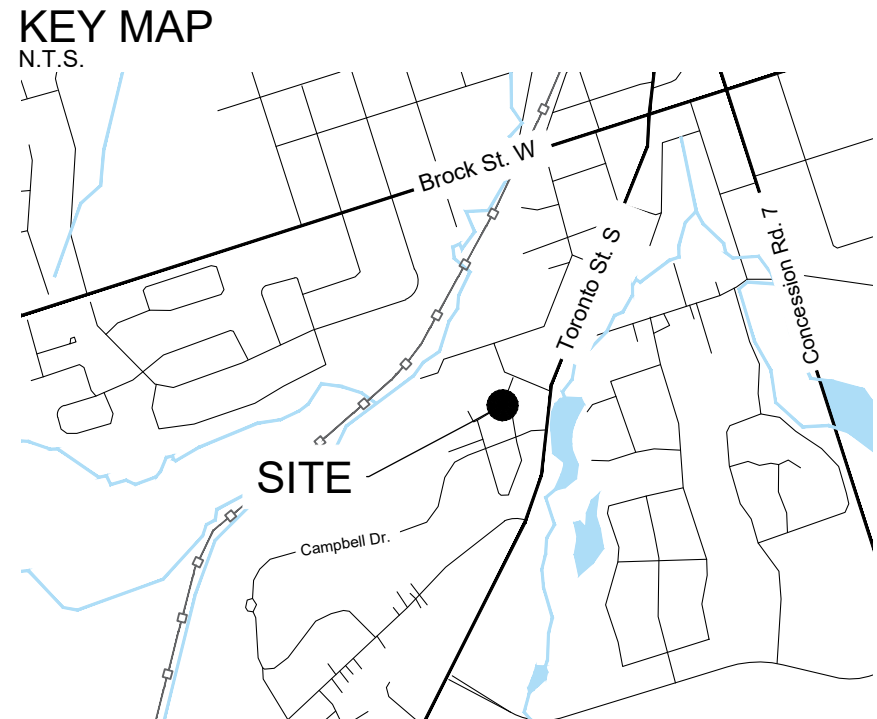
GROUND FLOOR COURTYARD ENLARGEMENT PLAN

PLANT SCHEDULE COURTYARD							
CODE	QTY	BOTANICAL NAME	COMMON NAME	SIZE	CONTAINER		REMARKS
CONIFEROUS TREES							
TY	1	Thuja occidentalis 'Yellow Ribbon'	Yellow Ribbon Arborvitae	150cm Ht.	BBC		
CODE	QTY	BOTANICAL NAME	COMMON NAME	SIZE	CONTAINER	SPACING	REMARKS
DECIDUOUS SHRUBS							
Hs	17	Hydrangea quercifolia 'Sike's Dwarf'	Sike's Dwarf Oakleaf Hydrangea	60cm		1.5 m	
ORNAMENTAL GRASSES							
cap	451	Carex pensylvanica	Pennsylvania Sedge	---	1 gal.	0.45 m	Moderate Salt Tolerant.
PERENNIALS							
ask	21	Astilbe simplicifolia 'Key West'	Key West Star Astilbe	---	2 gal.	350 mm	
bm	75	Brunnera macrophylla 'Alexander's Great'	Alexander's Great Siberian Bugloss	---	1 gal.	450 mm	
hbn	102	Helleborus niger	Christmas Rose	---	1 gal.	400 mm	Salt Tolerant
hou	6	Hosta x 'Blue Umbrellas'	Blue Umbrellas Hosta	---	1 gal.	1,500 mm	Moderate Salt Tolerant.
tic	147	Tiarella cordifolia	Foamflower	---	1 gal.	250 mm	

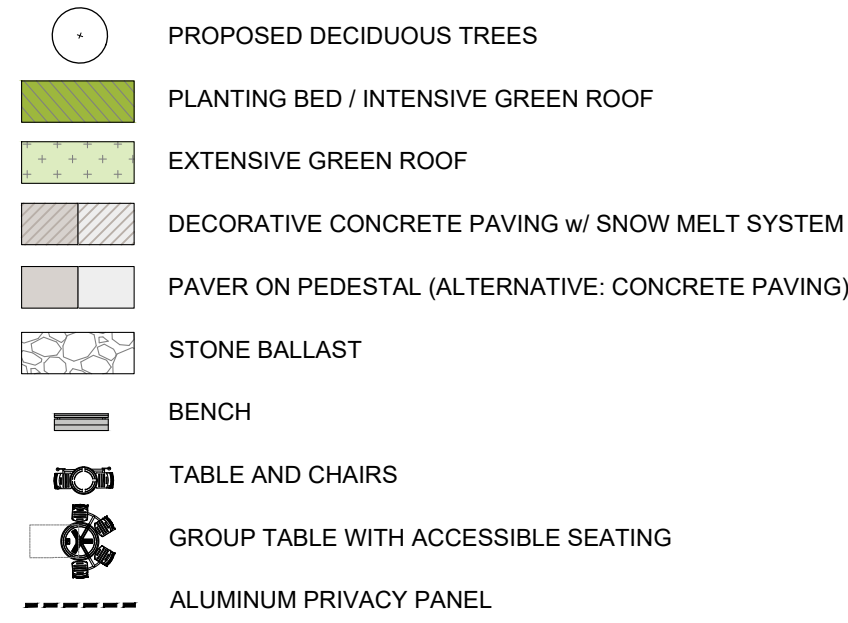
PLANT SCHEDULE ROOF TERRACE							
CODE	QTY	BOTANICAL NAME	COMMON NAME	SIZE	CONTAINER	SPACING	REMARKS
DECIDUOUS SHRUBS							
Cs	6	Cornus sericea	Red Osier Dogwood	50cm	3 gal.	2 m	Native. Salt Tolerant.
Ra	5	Rhus aromatica	Fragrant Sumac	50cm	3 gal.	2.5 m	Native. Salt Tolerant.
ORNAMENTAL GRASSES							
scs	18	Schizachyrium scoparium	Little Bluestem	---	1 gal.	0.6 m	Native. Salt Tolerant.
sph	136	Sporobolus heterolepis	Prairie Dropseed	---	1 gal.	0.8 m	Native. Moderate Salt Tolerant.
PERENNIALS							
all	744	Allium cernuum	Nodding Onion	---	1 gal.	300 mm	Native
ama	360	Anaphalis margaritacea	Pearly Everlasting	---	1 gal.	500 mm	Native. Salt Tolerant.
col	118	Coreopsis lanceolata	Lanceleaf Tickseed	---	1 gal.	600 mm	Native. Moderate Salt Tolerant.
get	624	Geum triflorum	Prairie Smoke	---	1 gal.	350 mm	Native
syf	34	Symphoricarum laeve	Smooth Aster	---	1 gal.	1,000 mm	Native



ROOF TERRACE PLAN



LEGEND



**diamond schmitt**

**GSP group**

**GENERAL NOTES:**

1. DRAWINGS NOT TO BE USED FOR CONSTRUCTION UNLESS AUTHORIZED BY THE LANDSCAPE ARCHITECT
2. CONTRACTOR SHALL REPORT ANY DISCREPANCIES BETWEEN THE DRAWINGS AND SITE CONDITIONS PRIOR TO COMMENCEMENT OF THE WORK
3. ALL UTILITY LOCATES ARE THE RESPONSIBILITY OF THE CONTRACTOR. HAND ISG WITHIN THE LIMITS RECOMMENDED BY THE SERVICE UTILITY. UTILITY CONFLICTS WITH PROPOSED TREE LOCATIONS MUST BE REPORTED IMMEDIATELY TO THE LANDSCAPE ARCHITECT
4. BASE DRAWING PROVIDED BY DIAMOND SCHMITT ARCHITECTS
5. VEGETATION INVENTORY BY GSP GROUP INC.
6. LANDSCAPE DRAWINGS SHOW ENGINEERING INFORMATION FOR DESIGN PURPOSES ONLY. DO NOT CONSTRUCT ENGINEERING WORKS FROM THESE DRAWINGS

ISSUED		
NO.	DATE	DESCRIPTION
1	2024-04-01	Issued for Schematic Design Copying
2	2024-04-26	Issued for MCH Draft Submission
3	2024-05-02	Issued for Stage 2.1 Block Schematics
4	2024-07-12	Issued for Coordination
5	2024-07-31	Issued for 50% CD
6	2024-09-19	Issued for Site Plan Approval
7	2024-11-08	Issued for Site Plan Approval
8	2024-11-29	Issued for DD Copying
9	2024-12-13	Issued for Draft MCH Stage 2.2 Submission
10	2025-01-23	Issued for Stage 2.2 Sketch Plan
11	2025-01-30	Issued for 100% DD
12	2025-02-06	Issued for Site Plan Approval
13	2025-03-27	Issued for 50% CD
14	2025-04-17	Issued for 50% CD Copying
15	2025-06-12	Issued for Zoning Bylaw Amendment

CONTRACTOR MUST CHECK & VERIFY ALL DIMENSIONS ON THE JOB.

DO NOT SCALE DRAWINGS.

ALL DRAWINGS, SPECIFICATIONS AND RELATED DOCUMENTS ARE THE COPYRIGHT PROPERTY OF THE ARCHITECT. NO PART OF THIS DOCUMENT IS TO BE REPRODUCED OR TRANSMITTED IN ANY FORM OR BY ANY MEANS, ELECTRONIC OR MECHANICAL, INCLUDING PHOTOCOPYING, RECORDING, OR BY ANY INFORMATION STORAGE AND RETRIEVAL SYSTEM, WITHOUT THE WRITTEN PERMISSION OF THE ARCHITECT.

THIS DRAWING IS NOT TO BE USED FOR CONSTRUCTION UNTIL SIGNED BY THE ARCHITECT.



Uxbridge Hospital  
PROJECT NO.: 23175

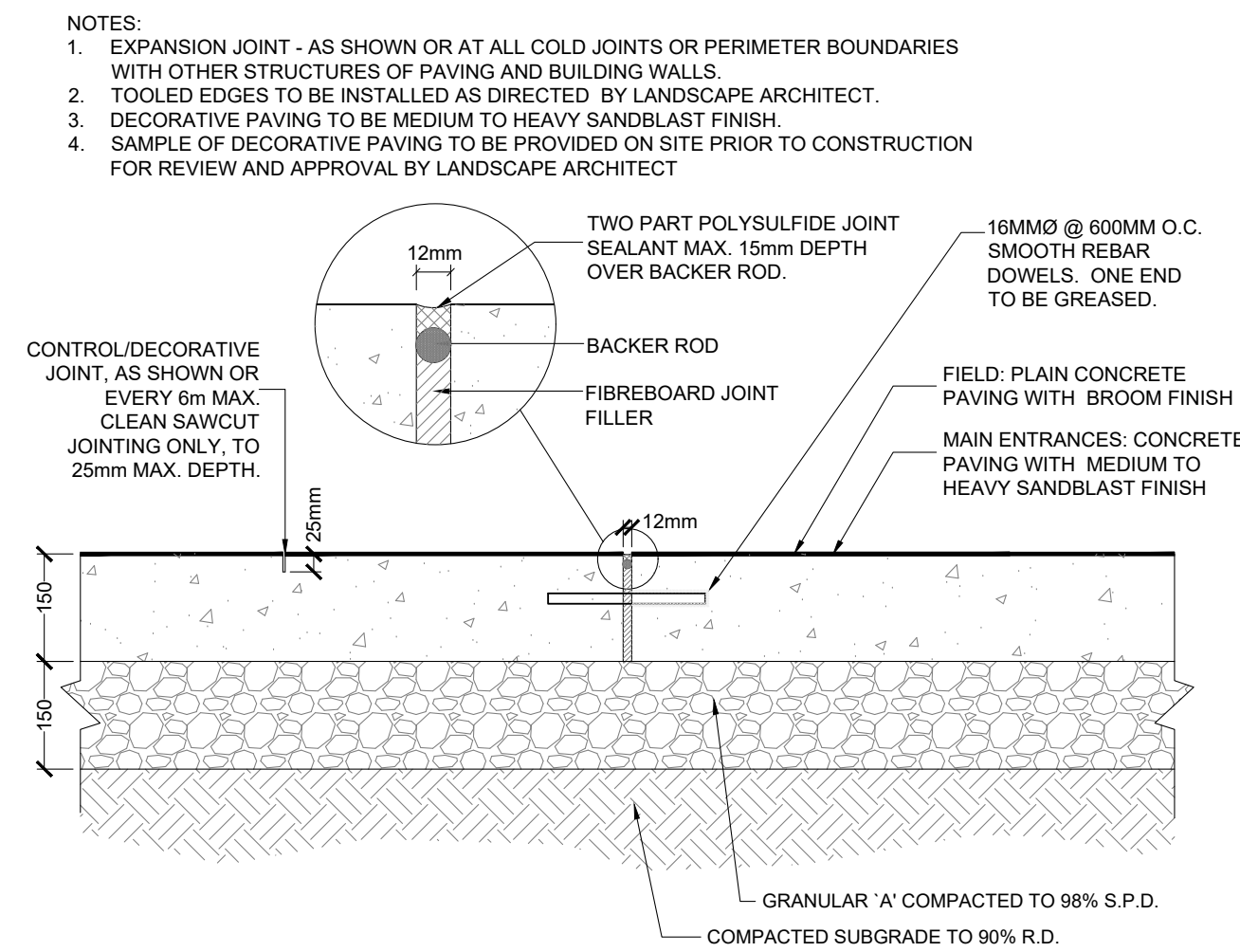
Landscape Courtyard and  
Roof Terrace - Planting Plan

1 : 100  
**L210**

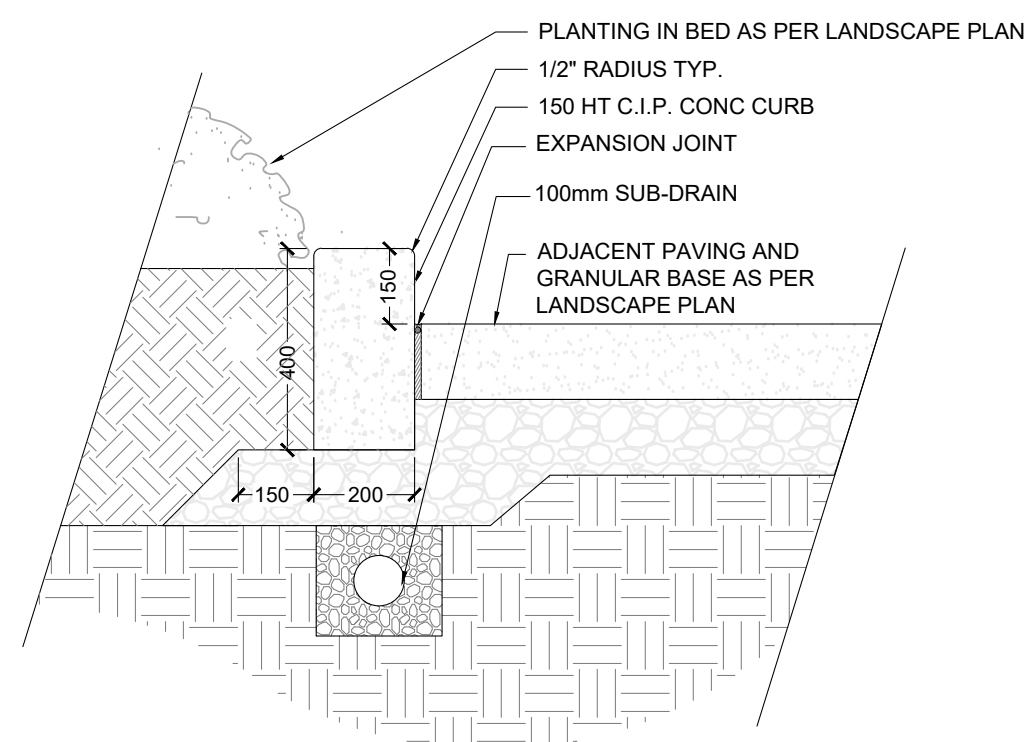




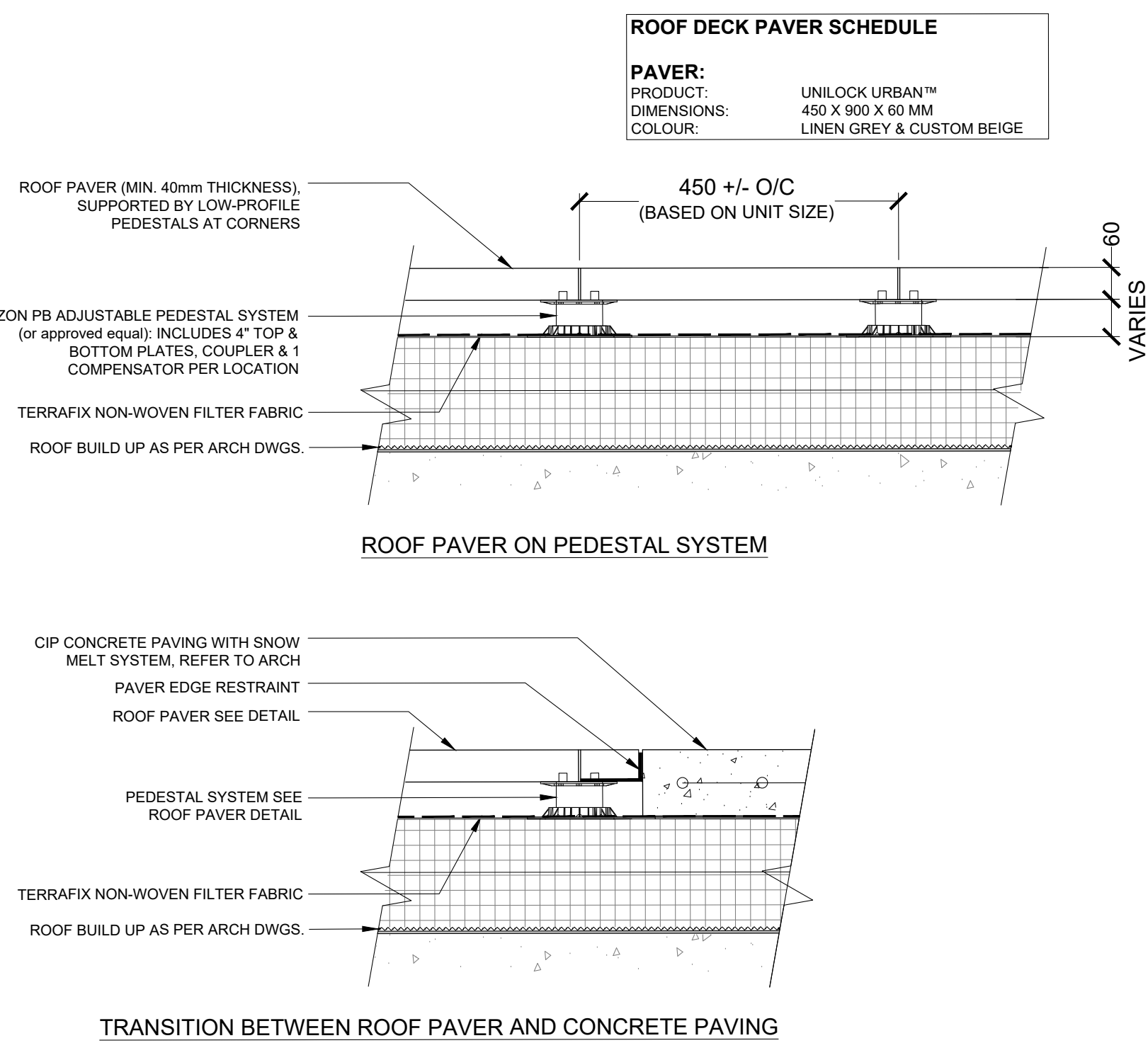




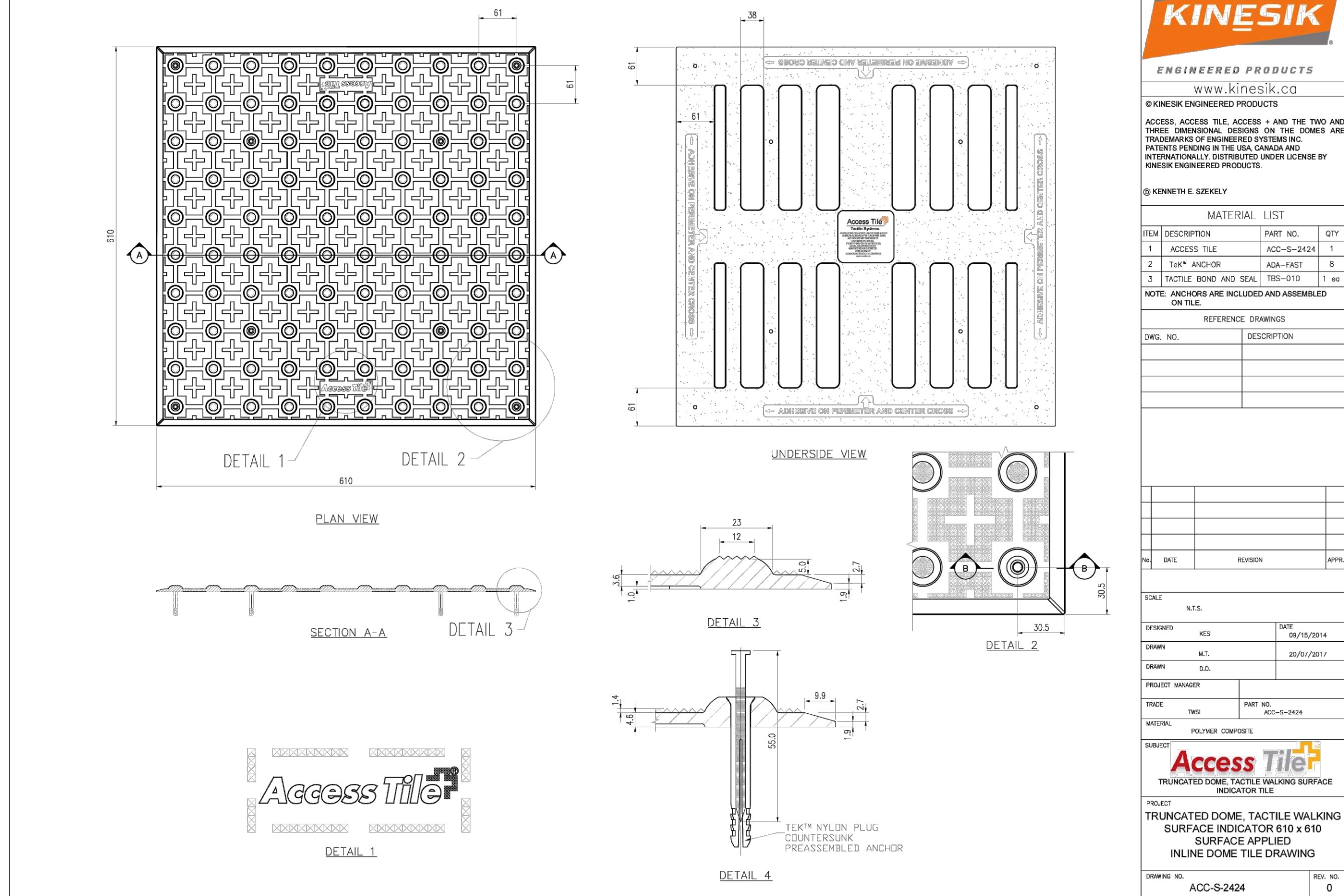
1 CONCRETE PAVING  
1:10



2 CONCRETE PLANTER CURB  
1:15



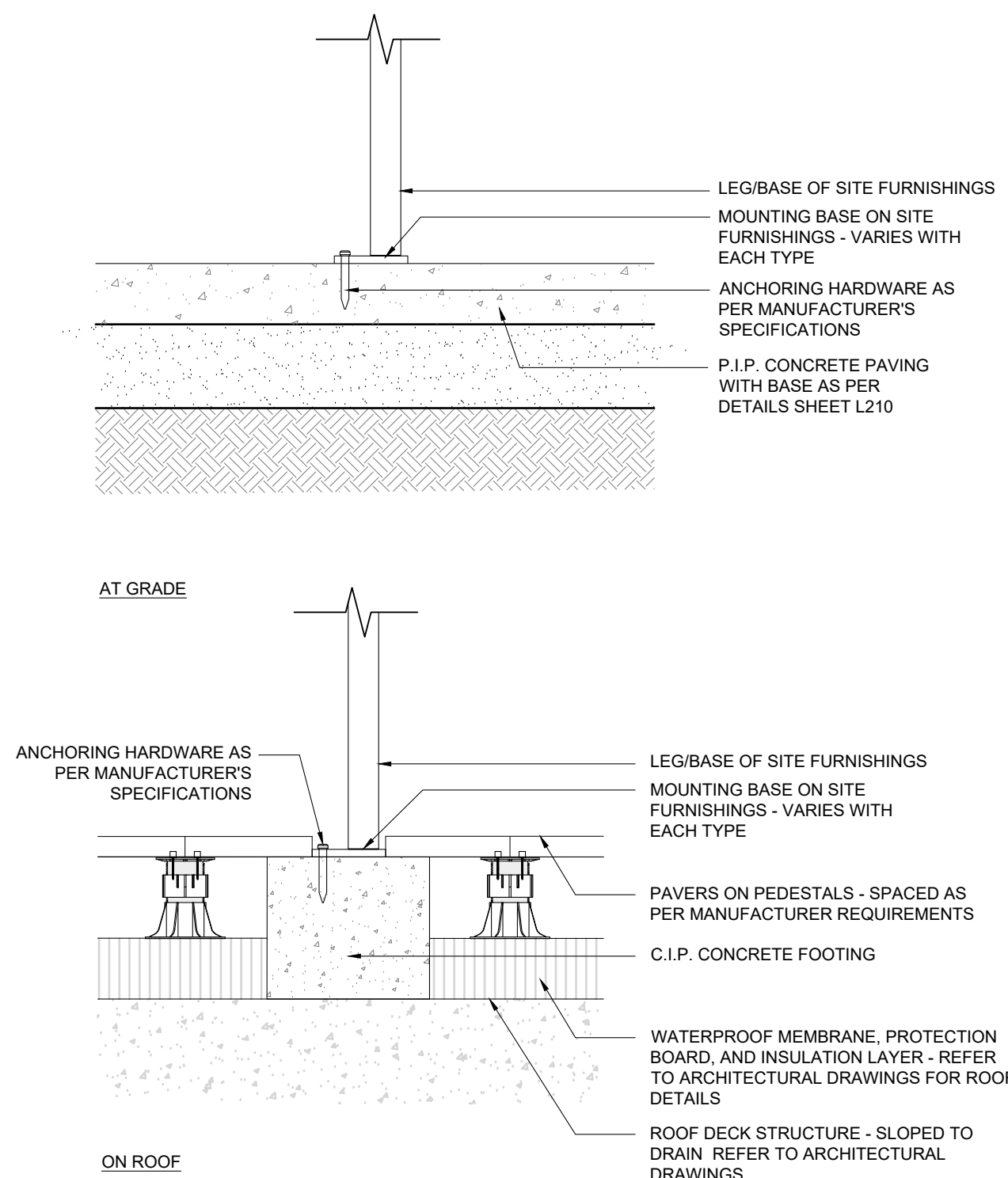
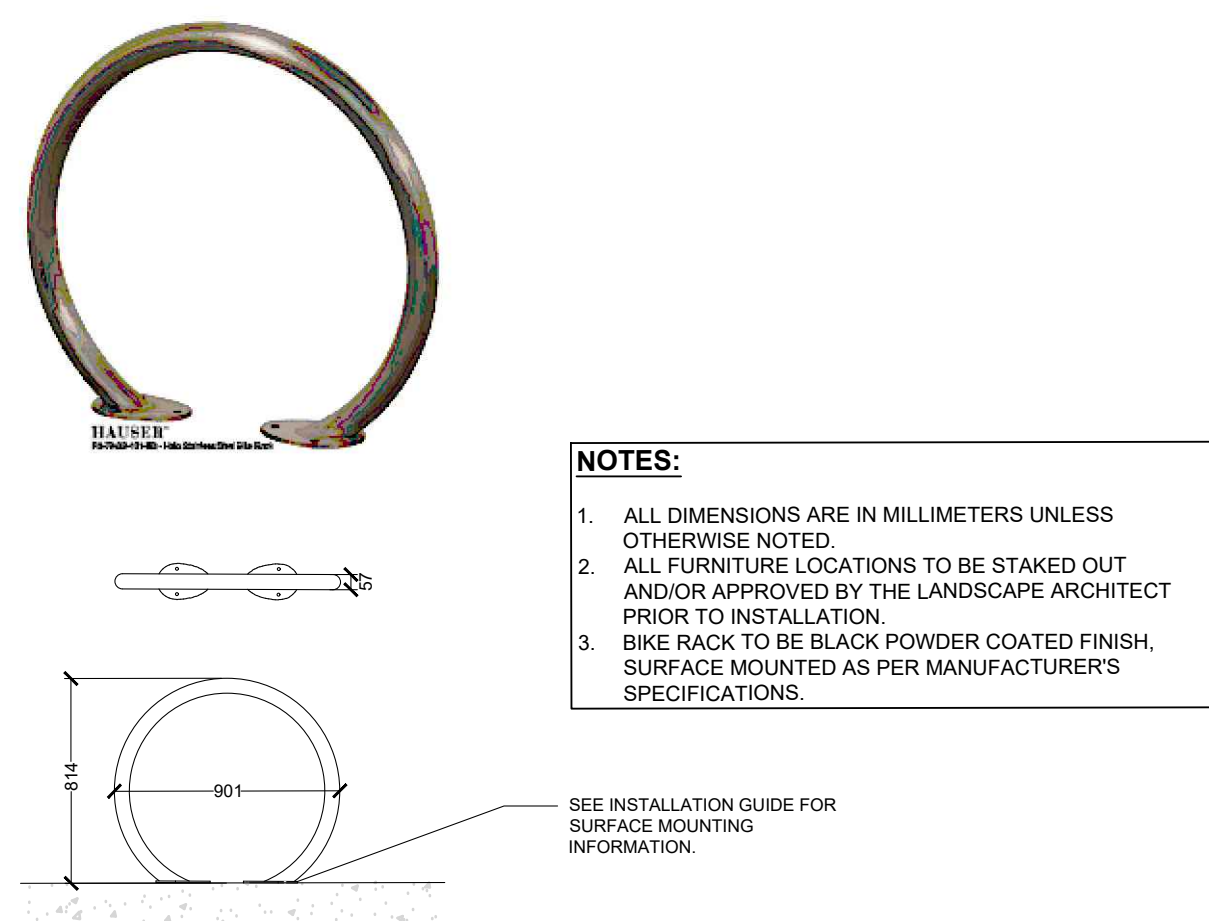
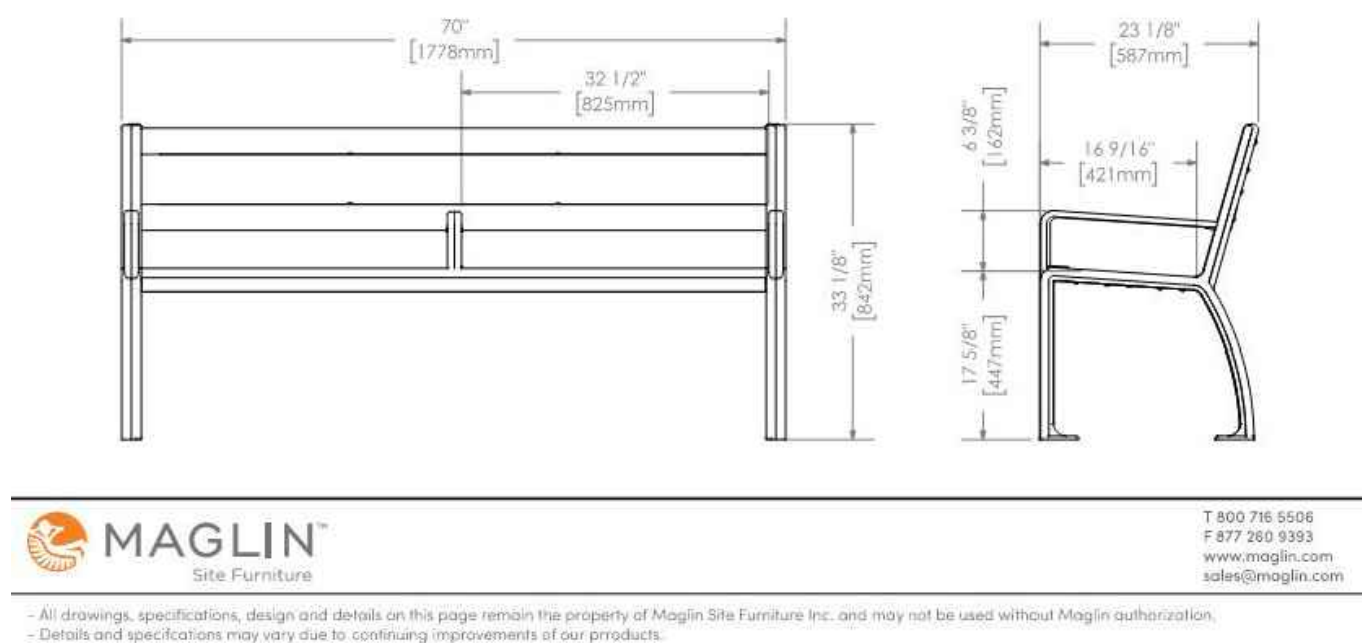
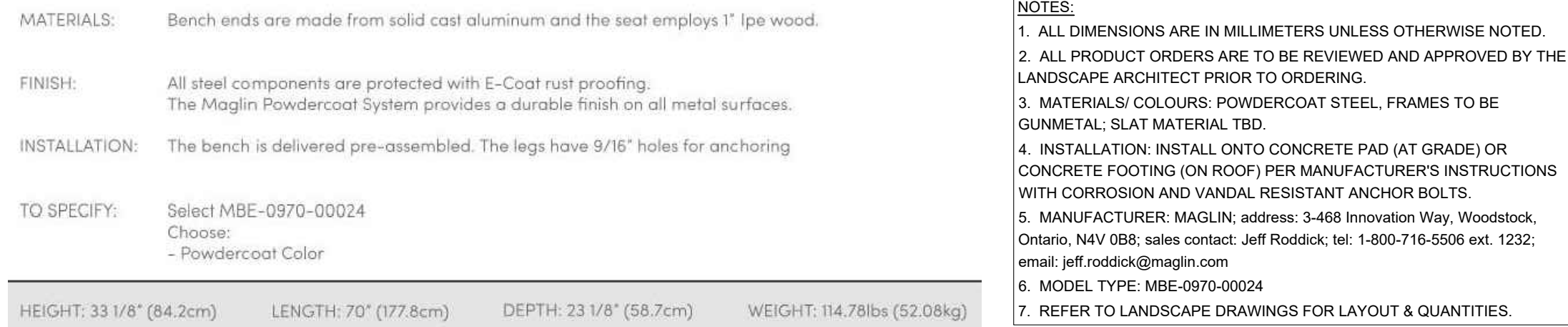
3 PAVER ON SLAB  
N.T.S.





1. DRAWINGS NOT TO BE USED FOR CONSTRUCTION UNLESS AUTHORIZED BY THE LANDSCAPE ARCHITECT
2. CONTRACTOR SHALL REPORT ANY DISCREPANCIES BETWEEN THE DRAWINGS AND SITE CONDITIONS PRIOR TO COMMENCEMENT OF THE WORK
3. ALL UTILITY LOCATES ARE THE RESPONSIBILITY OF THE CONTRACTOR. HAND DIG WITHIN THE LIMITS RECOMMENDED BY THE SERVICE UTILITY. UTILITY CONFLICTS WITH PROPOSED TREE LOCATIONS MUST BE REPORTED IMMEDIATELY TO THE LANDSCAPE ARCHITECT
4. BASE DRAWING PROVIDED BY DIAMOND SCHMITT ARCHITECTS.
5. VEGETATION INVENTORY BY GSP GROUP INC.
6. LANDSCAPE DRAWINGS SHOW ENGINEERING INFORMATION FOR DESIGN PURPOSES ONLY. DO NOT CONSTRUCT ENGINEERING WORKS FROM THESE DRAWINGS

ISSUED		
NO.	DATE	DESCRIPTION
1	2024-07-26	Issued for Coordination
2	2024-07-31	Issued for 50% DD
3	2024-09-19	Issued for SPA
4	2024-11-26	Issued for Site Plan Approval
5	2024-11-29	Issued for DD Costing
6	2024-12-13	Issued for Draft MOH Stage 2.2 Submission
7	2025-01-23	Issued for Stage 2.2 Sketch Plan
8	2025-01-30	Issued for 100% DD
9	2025-02-06	Issued for Site Plan Approval
10	2025-03-27	Issued for 50% CD
11	2025-04-17	Issued for 50% CD Costing
12	2025-06-12	Issued for Zoning Bylaw Amendment



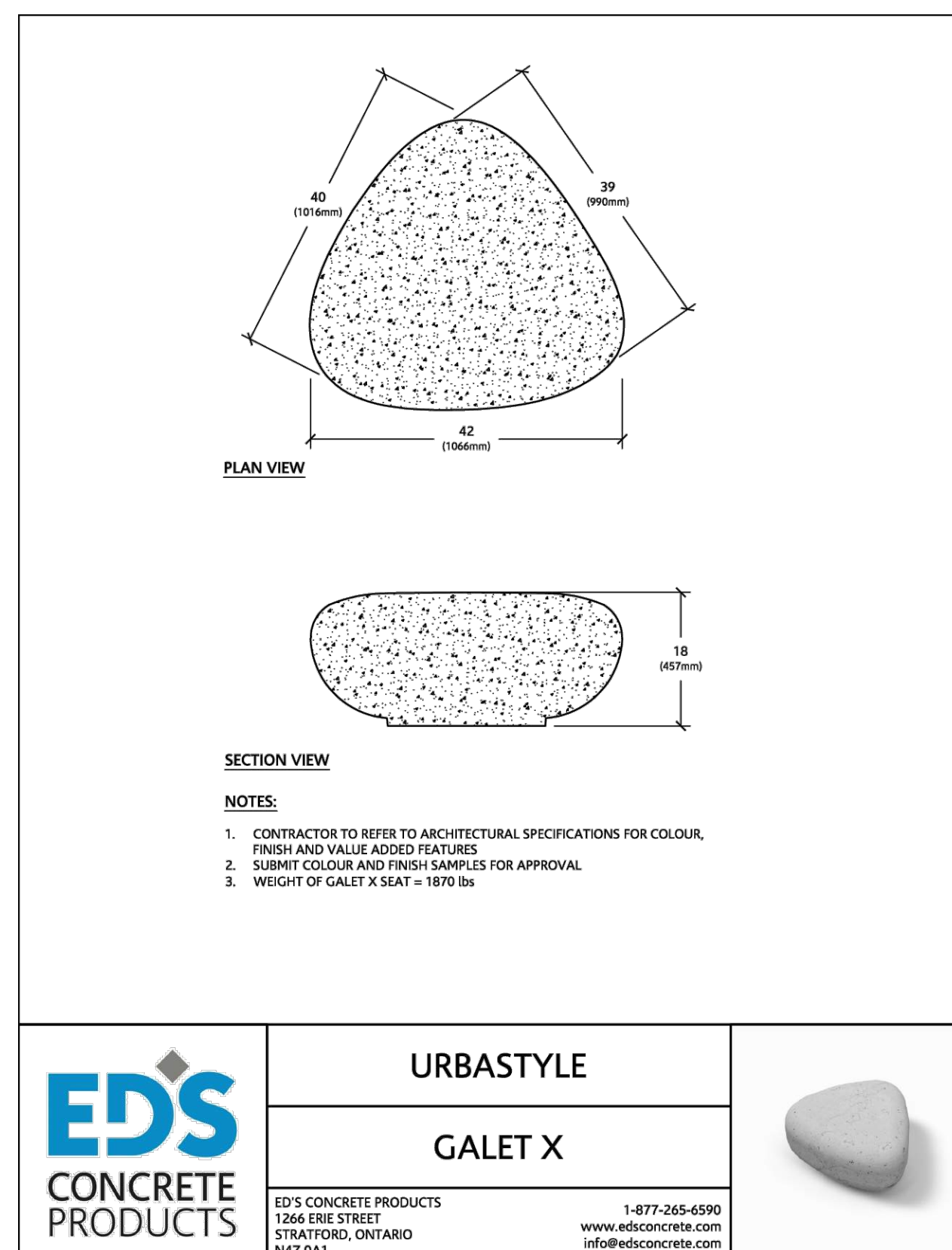
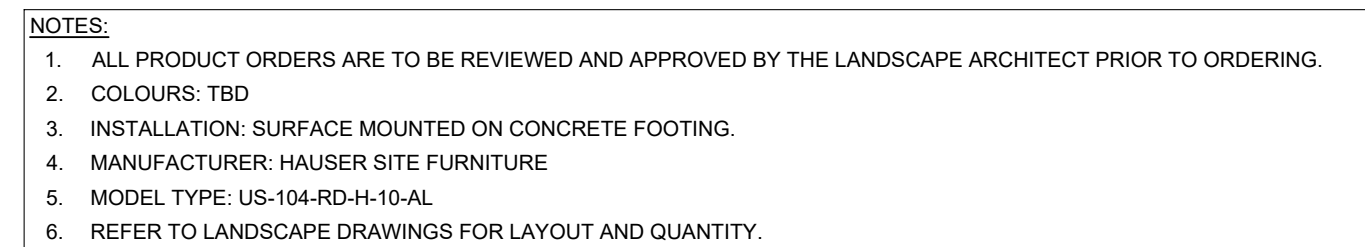
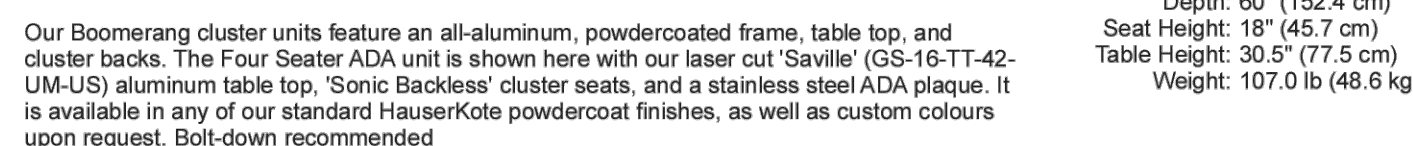
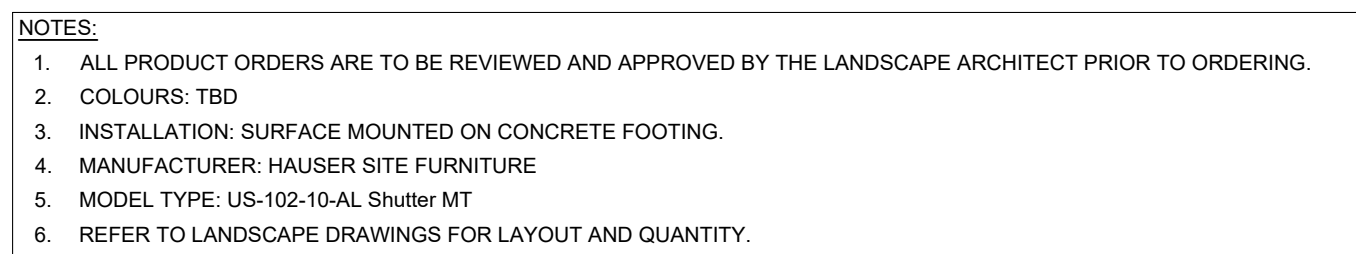
2 SURFACE MOUNT BENCH  
N.T.S

3 BIKE RACKS BY HAUSER  
N.T.S

4 SURFACE MOUNT FOR SITE FURNISHING  
N.T.S

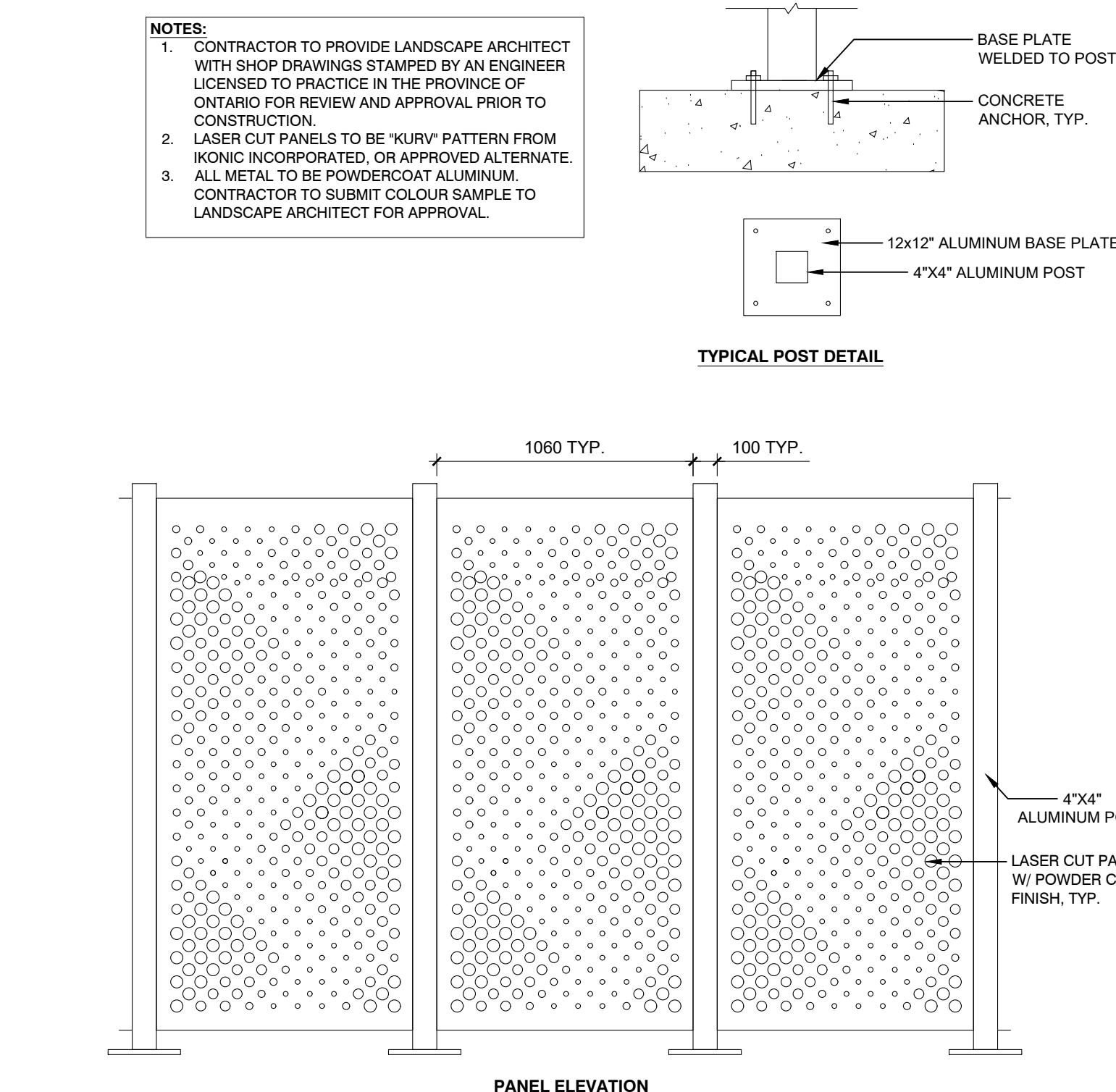
**HAUSER**  
SITE FURNITURE

Width: 65" (165.1 cm)  
Depth: 30" (76.2 cm)  
Height: 32" (81.3 cm)  
Seat Height: 18" (45.7 cm)  
Table Height: 29" (73.7 cm)



6 CLUSTER SEATING - 4 SEATS  
N.T.S

7 SEATING BLOCKS  
N.T.S



8 ALUMINUM PRIVACY SCREEN  
N.T.S