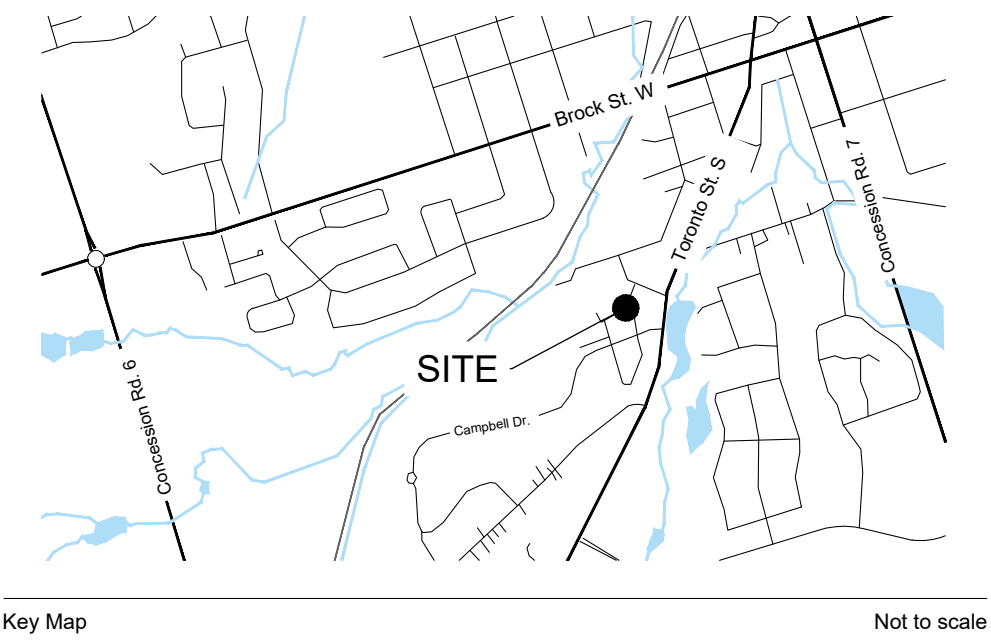
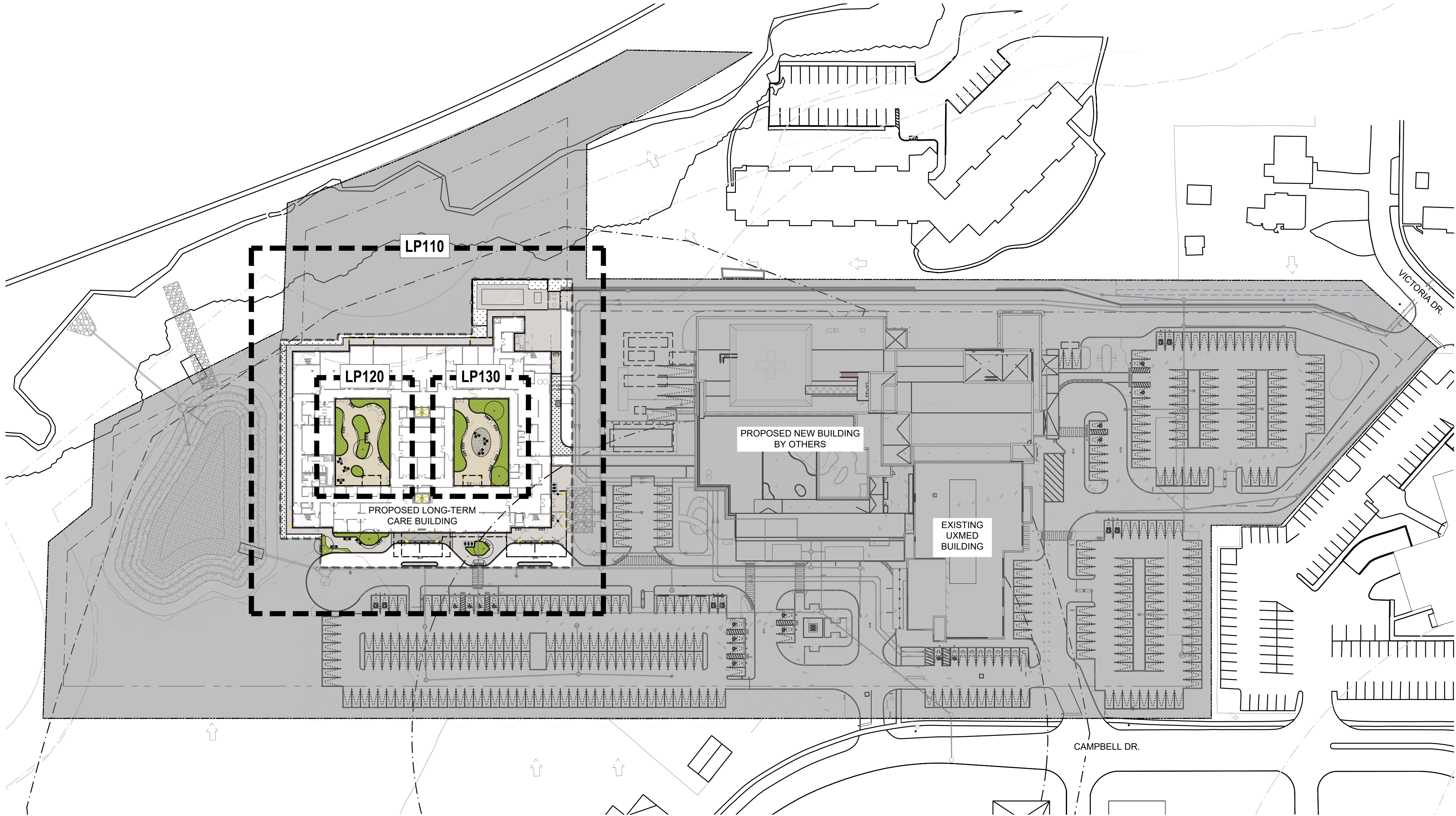


P:\25007 - Universal Care Canada - L1200 Drawings\25007 - PL100.dwg



- Legend**
- EXISTING TREES
 - PROPOSED DECIDUOUS TREES
 - PROPOSED CONIFEROUS TREES
 - PLANTING BED
 - SEED MIX 'A'
 - SEED MIX 'B'
 - CONCRETE PAVING
 - DECORATIVE CONCRETE PAVING
 - GRAVEL PAVING
 - BENCH
 - BIKE RACK
 - BOLLARD
 - PROPERTY BOUNDARY
 - CHAIN LINK FENCE



All Drawings, Specifications and Related Documents are the Copyright Property of the Landscape Architect and must be returned upon request.
Drawings shall not to be used for construction unless authorized by the Landscape Architect.

UniversalCare Canada Inc.
467 Edgeley Blvd. Unit 3, Vaughan, Ontario, L4K 4E9

Client		
Issued		
Date	Description	By
2025.02.06	Issued for Site Plan Approval	MC
2025.06.12	Issued for Zoning Bylaw Amendment	MC

NOT FOR
CONSTRUCTION

Oak Valley Long Term Care
4 Campbell Drive, Uxbridge, ON
File No.:

Project Information

North

Seal

10 5 0 10 20 30 1:750m

Scale: As Shown Do not scale drawings

Project No. 25007

Checked By: MC

Date: 2025.06.12

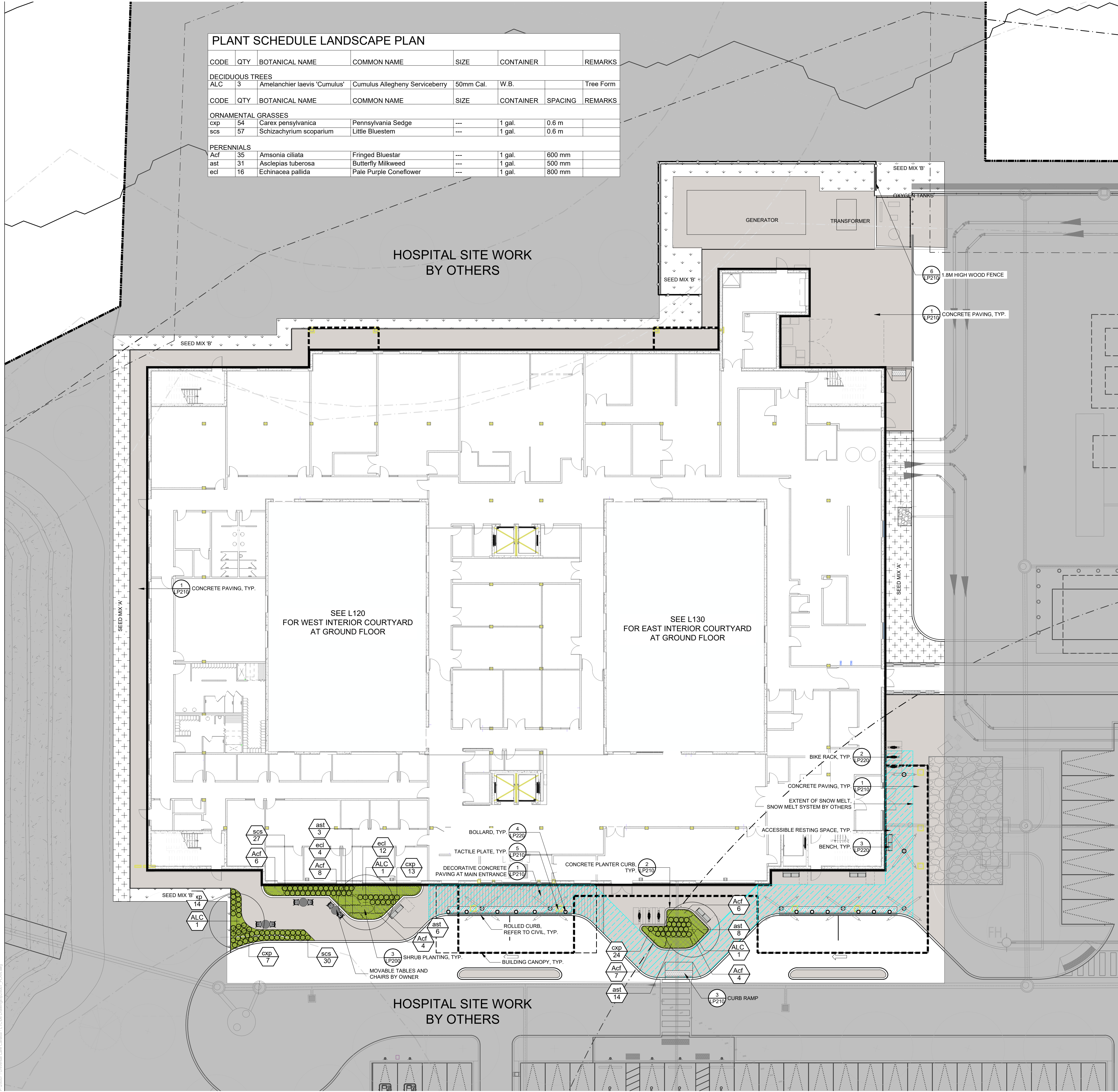
Drawn By: RH

Landscape Key Plan

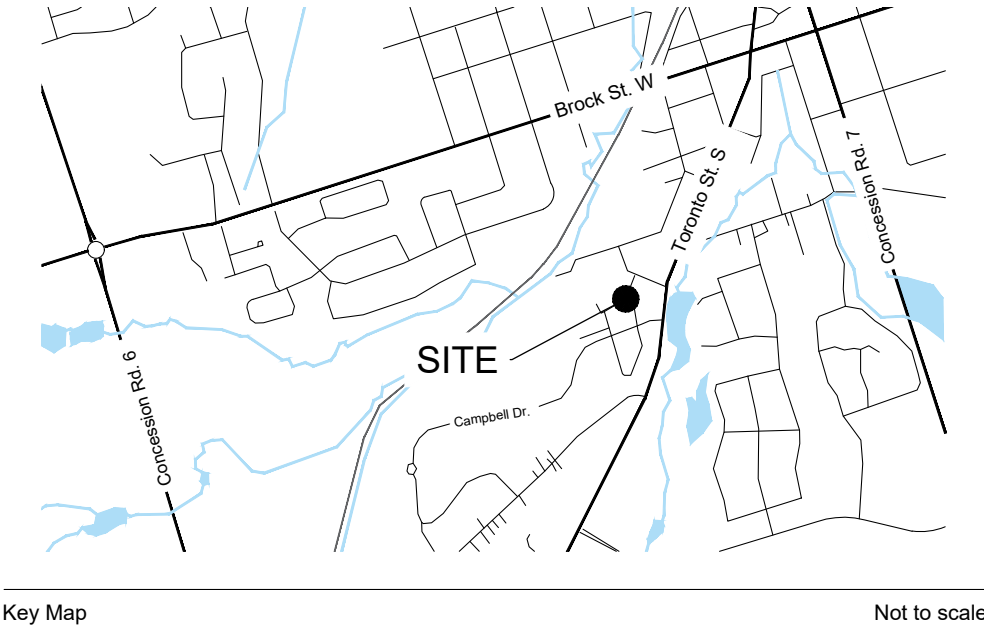
Drawing Name

LP100

Drawing No.



PLANT SCHEDULE LANDSCAPE PLAN							
CODE	QTY	BOTANICAL NAME	COMMON NAME	SIZE	CONTAINER		REMARKS
DECIDUOUS TREES							
ALC	3	Amelanchier laevis 'Cumulus'	Cumulus Allegheny Serviceberry	50mm Cal.	W.B.		Tree Form
CODE	QTY	BOTANICAL NAME	COMMON NAME	SIZE	CONTAINER	SPACING	REMARKS
ORNAMENTAL GRASSES							
cyp	54	Carex pensylvanica	Pennsylvania Sedge	---	1 gal.	0.6 m	
scs	57	Schizachyrium scoparium	Little Bluestem	---	1 gal.	0.6 m	
PERENNIALS							
Acf	35	Amsonia ciliata	Fringed Bluestar	---	1 gal.	600 mm	
ast	31	Asclepias tuberosa	Butterfly Milkweed	---	1 gal.	500 mm	
ecl	16	Echinacea pallida	Pale Purple Coneflower	---	1 gal.	800 mm	



- Legend**
- EXISTING TREES
 - PROPOSED DECIDUOUS TREES
 - PROPOSED CONIFEROUS TREES
 - PLANTING BED
 - SEED MIX 'A'
 - SEED MIX 'B'
 - CONCRETE PAVING
 - DECORATIVE CONCRETE PAVING
 - GRAVEL PAVING
 - BENCH
 - BIKE RACK
 - BOLLARD
 - PROPERTY BOUNDARY
 - CHAIN LINK FENCE
 - SNOW MELT SYSTEM BY OTHERS

NOTE:

1. FOR THE LANDSCAPE DESIGN WITHIN THE HOSPITAL SITE WORK, REFER TO OAK VALLEY HOSPITAL LANDSCAPE DRAWINGS L000 - L320.



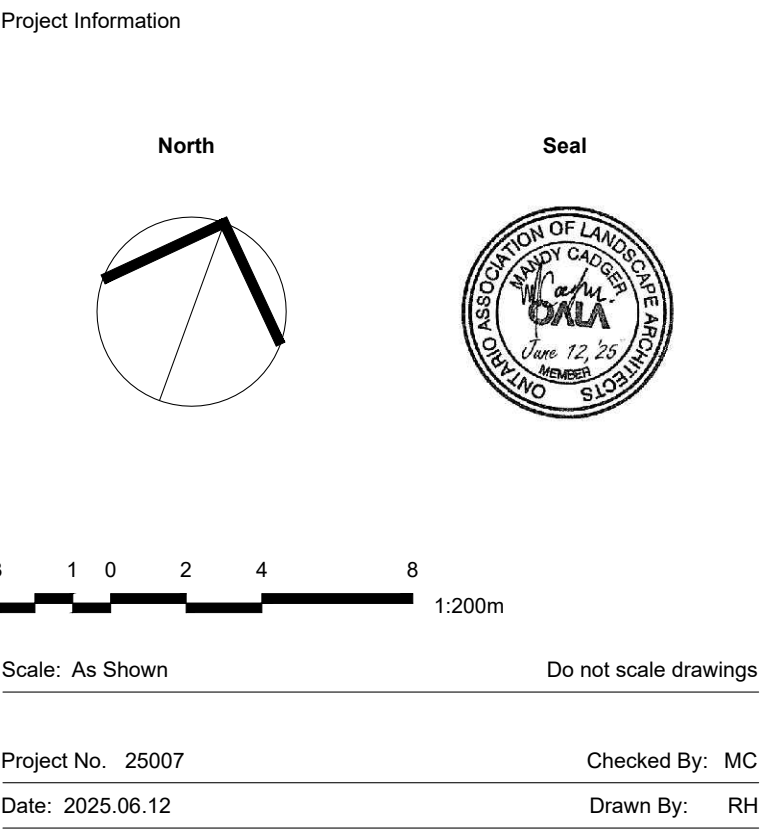
All Drawings, Specifications and Related Documents are the Copyright Property of the Landscape Architect and must be returned upon request.
Drawings shall not to be used for construction unless authorized by the Landscape Architect.

UniversalCare Canada Inc.
467 Edgeley Blvd. Unit 3, Vaughan, Ontario, L4K 4E9

Issued		
Date	Description	By
2025.02.06	Issued for Site Plan Approval	MC
2025.06.12	Issued for Zoning Bylaw Amendment	MC

NOT FOR
CONSTRUCTION

Oak Valley Long Term Care
4 Campbell Drive, Uxbridge, ON
File No.:



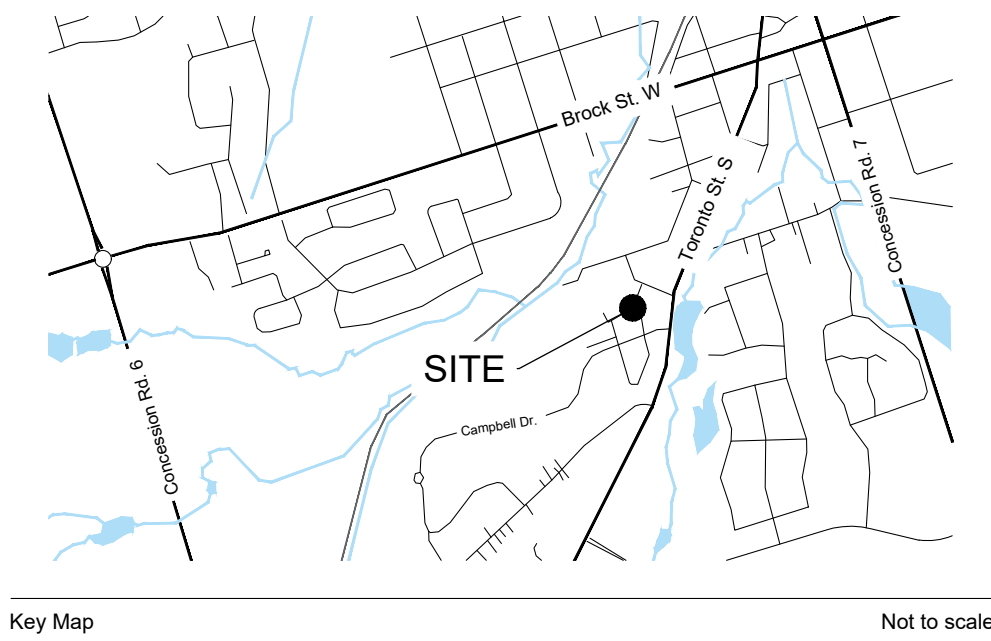
Landscape Plan

Drawing Name

LP110

Drawing No.

P:\20207 - Universal Care Canada - LP1200 Drawings\25007 - PLAN.dwg



- Legend**
- EXISTING TREES
 - PROPOSED DECIDUOUS TREES
 - PROPOSED CONIFEROUS TREES
 - PLANTING BED
 - COLOURED CONCRETE PAVING
 - DECORATIVE COLOURED CONCRETE PAVING
 - BENCH

PLANT SCHEDULE WEST COURTYARD							
CODE	QTY	BOTANICAL NAME	COMMON NAME	SIZE	CONTAINER		REMARKS
DECIDUOUS TREES							
CK	1	Cladrastis kentukea	American Yellowwood	60mm Cal.	W.B.		
CODE	QTY	BOTANICAL NAME	COMMON NAME	SIZE	CONTAINER	SPACING	REMARKS
DECIDUOUS SHRUBS							
HqS	30	Hydrangea quercifolia 'Sike's Dwarf'	'Sike's Dwarf' Oakleaf Hydrangea	60cm	3 gal.	1.2 m	
ORNAMENTAL GRASSES							
cyp	60	Carex pensylvanica	Pennsylvania Sedge	---	1 gal.	0.6 m	
Ehp	115	Hystrix patula	Bottlebrush Grass	60cm		0.5 m	
PERENNIALS							
gem	53	Geranium maculatum	Wild Geranium	---	1 gal.	600 mm	
get	184	Geum triflorum	Prairie Smoke	---	1 gal.	300 mm	

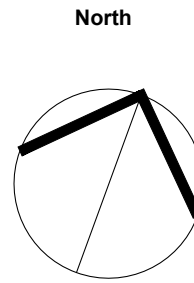
NOT FOR
CONSTRUCTION

Oak Valley Long Term Care

4 Campbell Drive, Uxbridge, ON

File No.:

Project Information



Seal



1 0 1 2 4 1:100m

Scale: As Shown

Do not scale drawings

Project No. 25007

Checked By: MC

Date: 2025.06.12

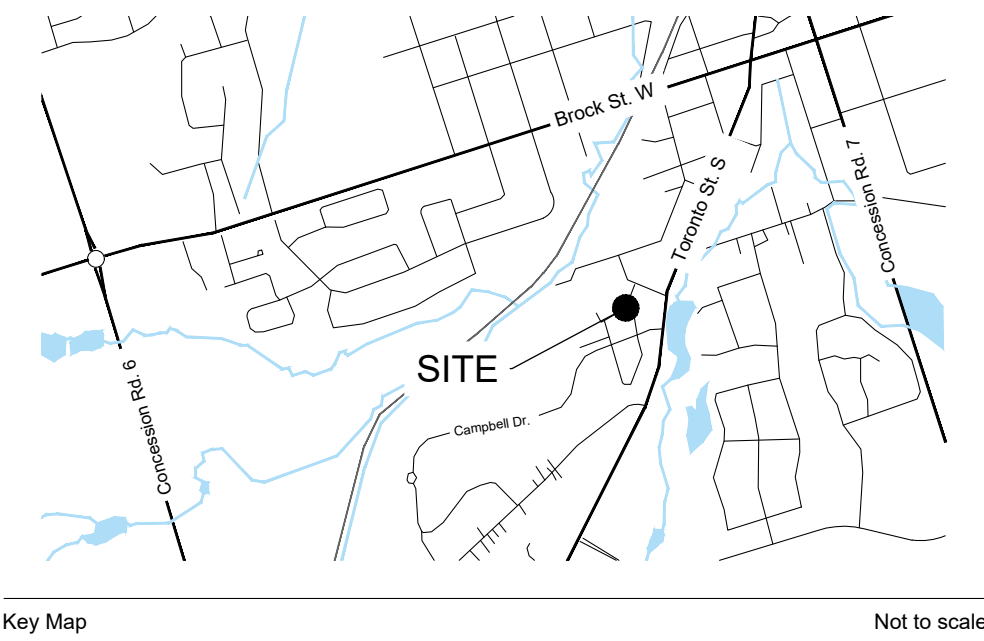
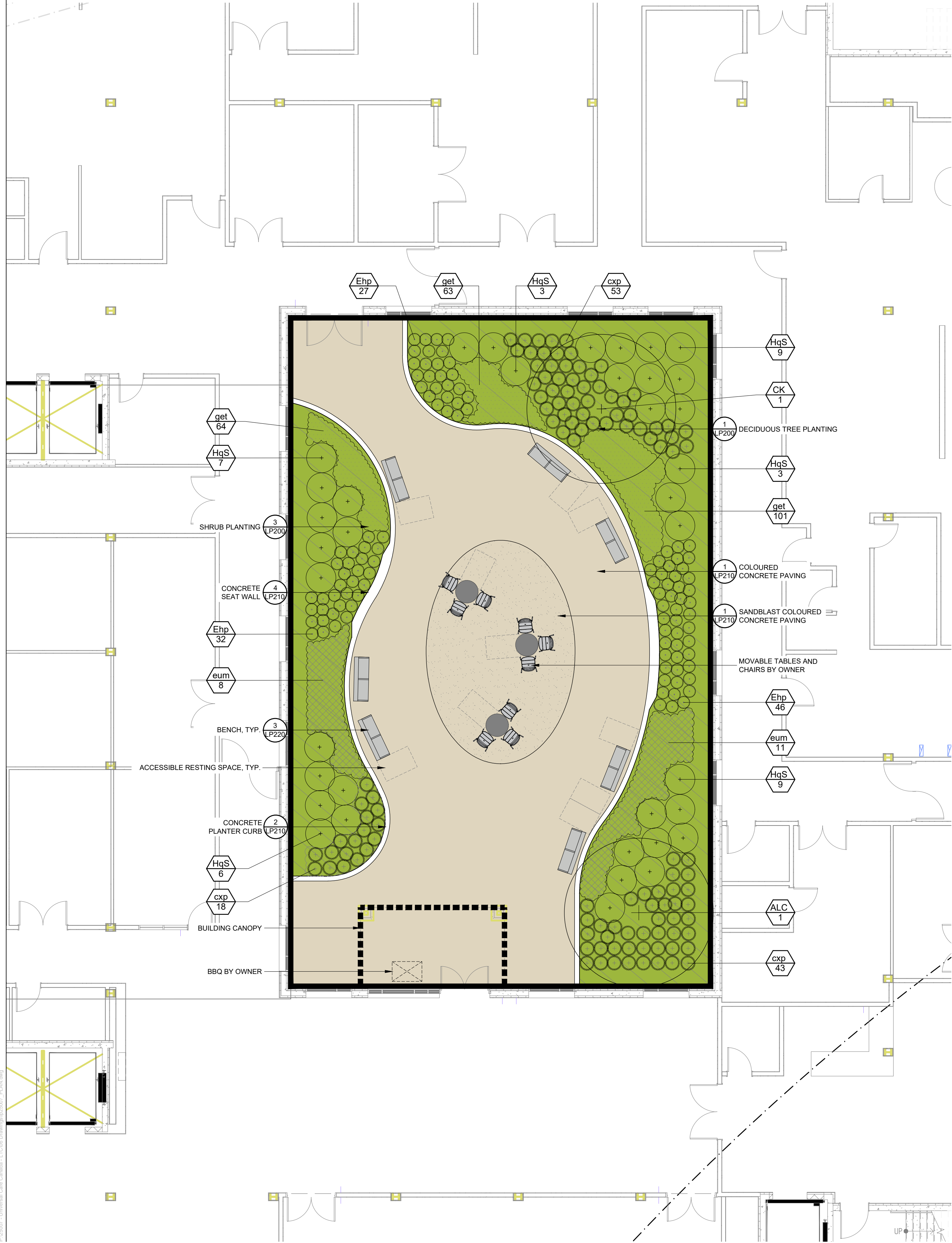
Drawn By: RH

Landscape Plan - West Courtyard

Drawing Name

LP120

Drawing No.



All Drawings, Specifications and Related Documents are the Copyright Property of the Landscape Architect and must be returned upon request.
Drawings shall not to be used for construction unless authorized by the Landscape Architect.

UniversalCare Canada Inc.
467 Edgeley Blvd. Unit 3, Vaughan, Ontario, L4K 4E9

Client

Issued		
Date	Description	By
2025.02.06	Issued for Site Plan Approval	MC
2025.06.12	Issued for Zoning Bylaw Amendment	MC

- Legend**
- EXISTING TREES
 - PROPOSED DECIDUOUS TREES
 - PROPOSED CONIFEROUS TREES
 - PLANTING BED
 - COLOURED CONCRETE PAVING
 - DECORATIVE COLOURED CONCRETE PAVING
 - BENCH

PLANT SCHEDULE EAST COURTYARD

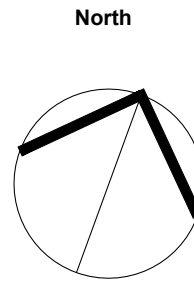
CODE	QTY	BOTANICAL NAME	COMMON NAME	SIZE	CONTAINER		REMARKS
DECIDUOUS TREES							
ALC	1	Amelanchier laevis 'Cumulus'	Cumulus Allegheny Serviceberry	50mm Cal.	W.B.		Tree Form
CK	1	Cladrastis kentukea	American Yellowwood	60mm Cal.	W.B.		
CODE	QTY	BOTANICAL NAME	COMMON NAME	SIZE	CONTAINER	SPACING	REMARKS
DECIDUOUS SHRUBS							
HqS	37	Hydrangea quercifolia 'Sike's Dwarf'	Sike's Dwarf Oakleaf Hydrangea	60cm	3 gal.	1.2 m	
ORNAMENTAL GRASSES							
cxp	114	Carex pensylvanica	Pennsylvania Sedge	---	1 gal.	0.6 m	
Ehp	105	Hystrix patula	Bottlebrush Grass	60cm		0.5 m	
PERENNIALS							
eum	19	Eupatorium maculatum	Joe Pye Weed	---	1 gal.	1,000 mm	
get	228	Geum triflorum	Prairie Smoke	---	1 gal.	300 mm	

NOT FOR
CONSTRUCTION

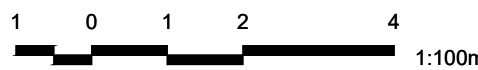
Oak Valley Long Term Care

4 Campbell Drive, Uxbridge, ON
File No.:

Project Information



Seal



Scale: As Shown Do not scale drawings

Project No.	25007	Checked By:	MC
Date:	2025.06.12	Drawn By:	RH

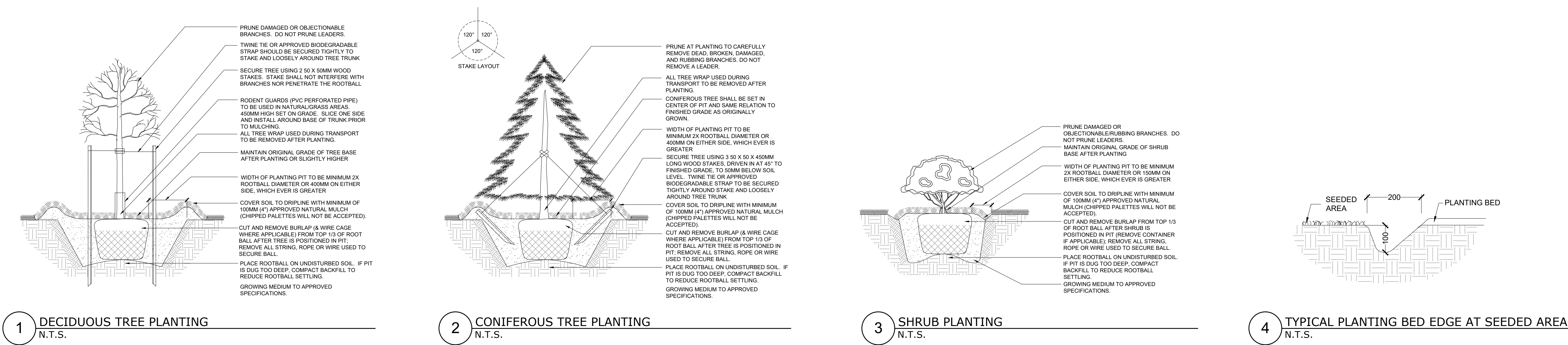
Landscape Plan - East Courtyard

Drawing Name

LP130

Drawing No.

Issued	Description	By
Date		
2025.02.06	Issued for Site Plan Approval	MC
2025.06.12	Issued for Zoning Bylaw Amendment	MC



NOTES:

- NO-MOW MEADOW 'A' SEED MIXTURE IS 'CVC 1 - UPLAND MIX' PER CREDIT VALLEY CONSERVATION PLANT SELECTION GUIDELINE, APRIL 2018.
- SEED MIXTURE AVAILABLE FROM OSC SEED OR APPROVED ALTERNATE.
- NURSE CROP TO BE APPLIED AT 15KG/HA. SPRING-SUMMER PLANTING TO BE SOWN WITH 40% OATS, 45% BARLEY & 15% CANADA WILD RYE. FALL PLANTING TO BE SOWN WITH 100% WINTER WHEAT.

NO-MOW MEADOW 'A' SEED MIXTURE		
SOW AT 25KG/ HA + NURSE CROP		
1%	Anemone canadensis	Canada Anemone
2%	Asclepias syriaca	Common Milkweed
15%	Carex granularis	Limestone Meadow Sedge
40%	Elymus virginicus	Virginia Wildrye
1%	Euthamia graminifolia	Grass-leaved Goldenrod
1%	Monarda fistulosa	Wild Bergamot
25%	Oenothera biennis	Common Evening Primrose
10%	Rudbeckia hirta	Black Eyed Susan
1%	Solidago canadensis	Canada Goldenrod
1%	Solidago juncea	Early Goldenrod
1%	Solidago nemoralis	Gray-stemmed Goldenrod
1%	Symphotrichum novae-angliae	New England Aster
1%	Verbena urticifolia	White Vervain

NOTES:

- SEED MIXTURE BASED ON '8340 - LOW MAINTENANCE ECO LAWN' AVAILABLE FROM OSC SEED OR APPROVED ALTERNATE.
- NURSE CROP TO BE APPLIED AT 15KG/HA. SPRING-SUMMER PLANTING TO BE SOWN WITH 40% OATS, 45% BARLEY & 15% CANADA WILD RYE. FALL PLANTING TO BE SOWN WITH 100% WINTER WHEAT.

NO-MOW MEADOW 'B' SEED MIXTURE		
SOW AT 180KG/ HA + NURSE CROP		
30%	Festuca ovina	Hard Fescue
20%	Festuca rubra	Creeping Red Fescue
30%	Festuca rubra commutata	Chewing Fescue
10%	Festuca subverticillata	Nodding Fescue
10%	Lolium perenne	Perennial Ryegrass

SEEDING NOTES

- SEEDING SHALL BE PERFORMED BETWEEN MID-MAY AND MID-SEPTEMBER. OBTAIN CONSULTANT'S APPROVAL FOR ANY SEEDING OUTSIDE OF THE ABOVE PREFERRED WINDOW.
- APPLY HYDRAULIC MIXTURE EVENLY AND UNIFORMLY AND AT SUCH A RATE TO MEET THE COVERAGE SPECIFIED IN OPSS 572.
- STRAW SHOULD JUST COVER THE SOIL SURFACE, BUT NOT BURY IT. SOME SOIL SHOULD BE VISIBLE THROUGH THE STRAW - TO A MAXIMUM OF 10%.
- ALL SEEDING TO BE APPLIED THROUGH HYDRAULIC METHOD EXCEPT AREAS WHERE CONDITIONS WILL ONLY PERMIT MECHANICAL SEEDING. CONTRACTOR TO OBTAIN CONSULTANT'S APPROVAL FOR ALL ALTERNATE SEEDING METHODS.
- FOR AREAS WHERE SEED IS APPLIED TO STEEP SLOPES (3:1 AND ABOVE) AN EROSION CONTROL BLANKET SHALL BE APPLIED AND STAKED APPROPRIATELY.

SOIL NOTES

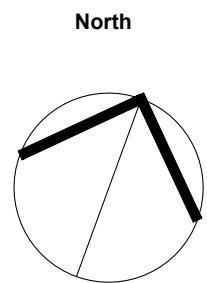
- ALL SEEDED AREAS SHALL HAVE MINIMUM TOPSOIL DEPTH OF 150mm.

5 MEADOW SEED MIXES
N.T.S.

Oak Valley Long Term Care

4 Campbell Drive, Uxbridge, ON
File No.:

Project Information



Scale: As Shown Do not scale drawings

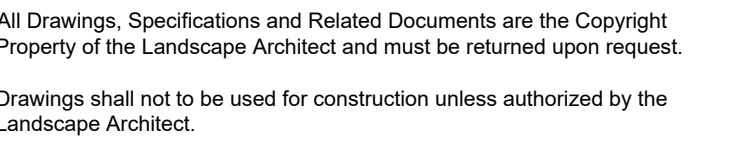
Project No. 25007 Checked By: MC
Date: 2025.06.12 Drawn By: RH

Planting Details

Drawing Name

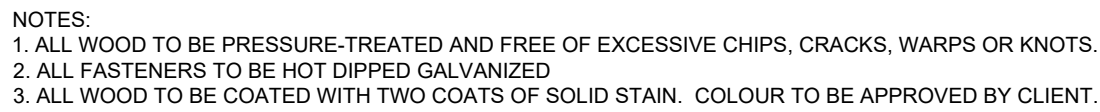
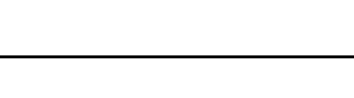
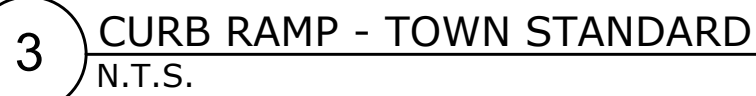
LP200

Drawing No.



Client

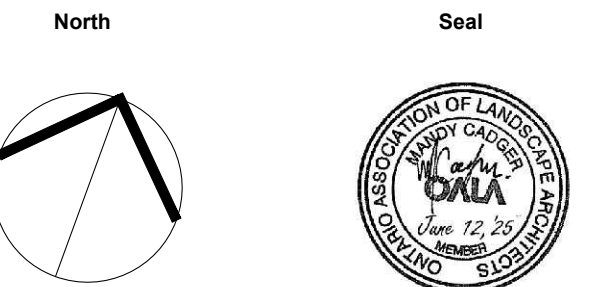
Date	Description	By
2025.02.06	Issued for Site Plan Approval	MC
2025.06.12	Issued for Zoning Bylaw Amendment	MC



NOT FOR
CONSTRUCTION

4 Campbell Drive, Uxbridge, ON
File No.:

Project Information



Scale: As Shown Do not scale drawings

Project No. 25007	Checked By: MC
Date: 2025.06.12	Drawn By: RH

Drawing Name

LP210

Drawing No.

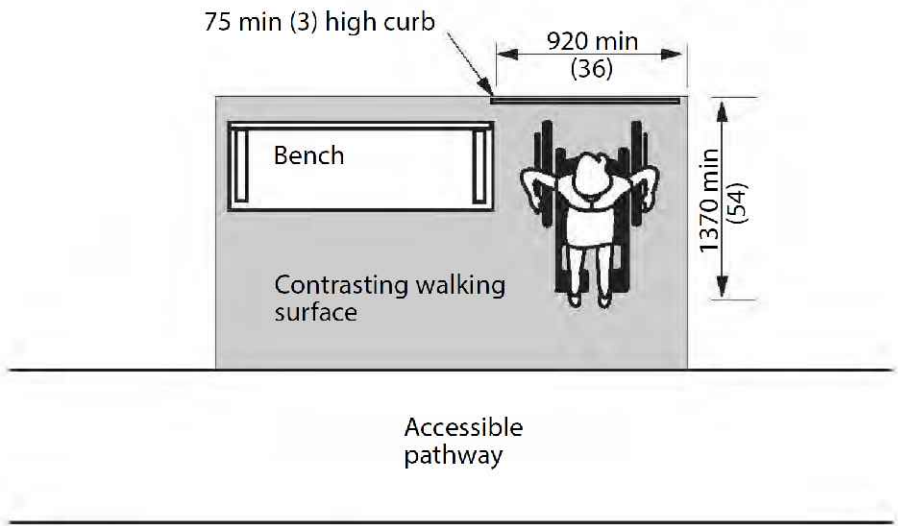
Dundas Bench With Envirowood Slats
PS-605-AL-WD2-WD2-A

Our 'Dundas' bench features a cast-aluminum, powdercoated frame with 'Envirowood' slats. Shown here with our 'Bronze' powdercoat finish, and 'Walnut' envirowood slats. Available in a variety of sizes and finishes, freestanding or bolt-down.

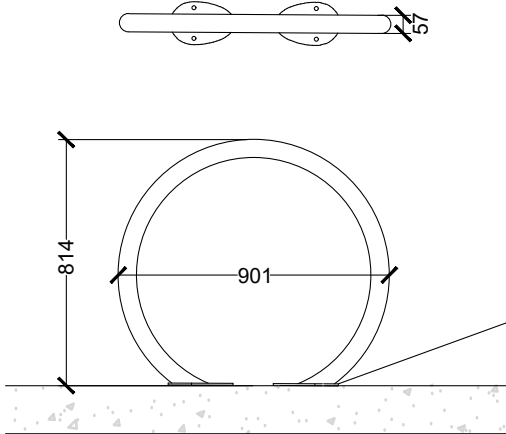


Width: 72" (182.9 cm)
Depth: 30.5" (77.5 cm)
Height: 31.5" (80.0 cm)
Seat Height: 16" (40.6 cm)
Weight: 165.0 lb (74.9 kg)

- NOTES:
1. ALL DIMENSIONS ARE IN MILLIMETERS UNLESS OTHERWISE NOTED.
 2. ALL PRODUCT ORDERS ARE TO BE REVIEWED AND APPROVED BY THE LANDSCAPE ARCHITECT PRIOR TO ORDERING.
 3. MATERIALS/ COLOURS: POWDERCOAT STEEL, FRAMES TO BE GUNMETAL; SLAT MATERIAL TBD.
 4. INSTALLATION: INSTALL ONTO CONCRETE PAD (AT GRADE) OR CONCRETE FOOTING (ON ROOF) PER MANUFACTURER'S INSTRUCTIONS WITH CORROSION AND VANDAL RESISTANT ANCHOR BOLTS.
 5. MANUFACTURER: MAGLIN; address: 3-468 Innovation Way, Woodstock, Ontario, N4V 0B8; sales contact: Jeff Roddick; tel: 1-800-716-5506 ext. 1232; email: jeff.roddick@maglin.com
 6. MODEL TYPE: MBE-0970-00024
 7. REFER TO LANDSCAPE DRAWINGS FOR LAYOUT & QUANTITIES.



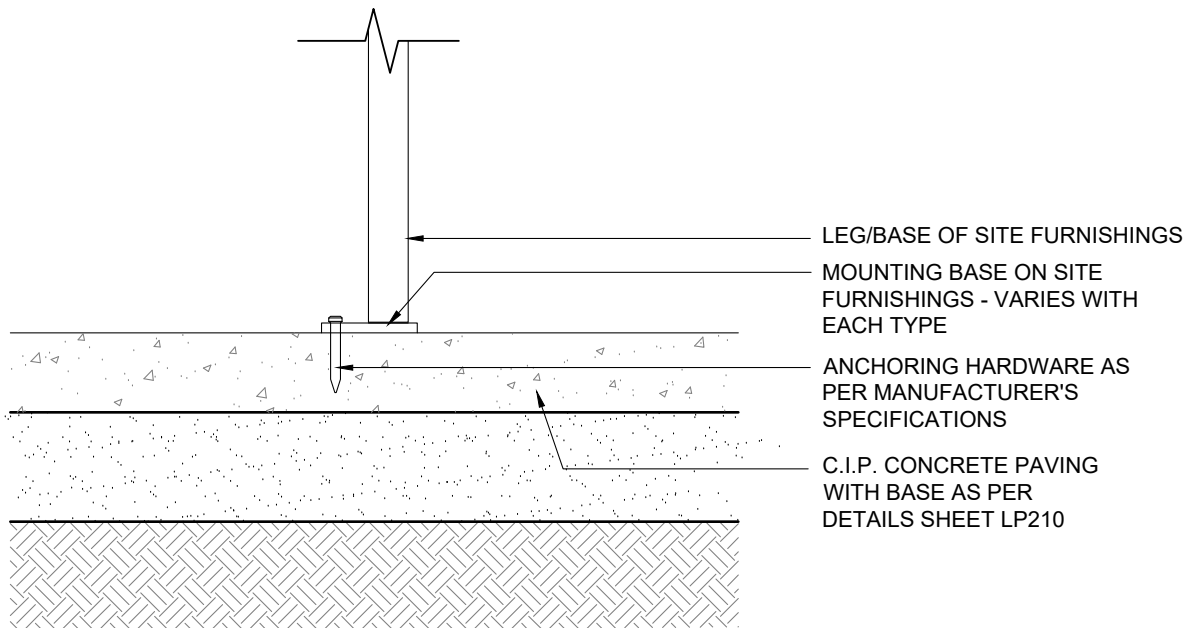
1 SURFACE MOUNT BENCH
N.T.S.



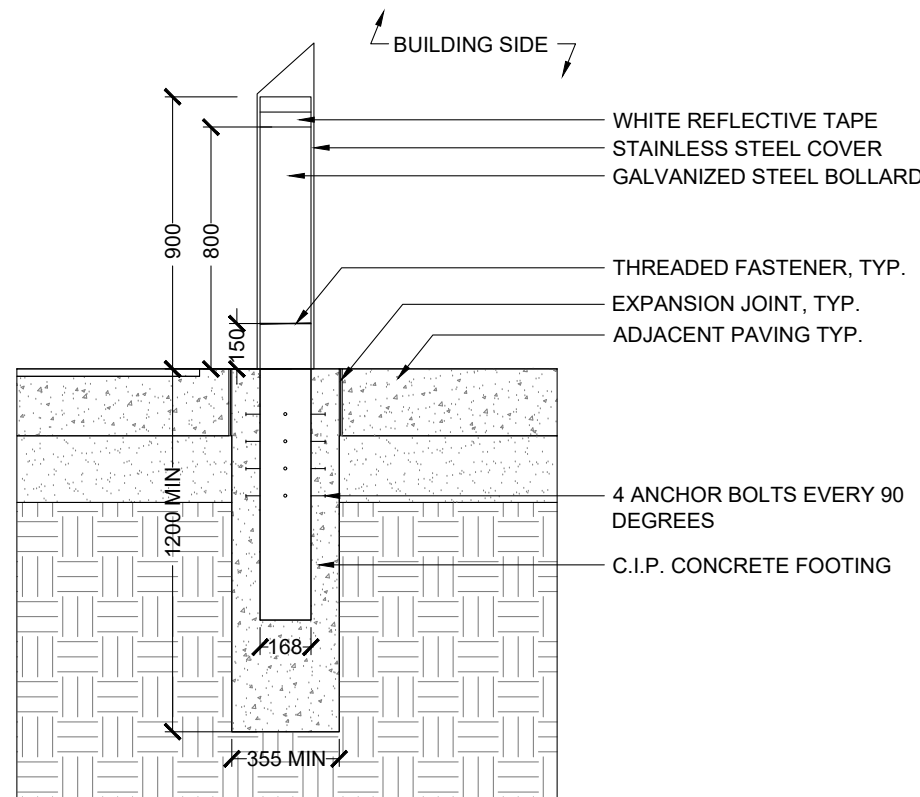
- NOTES:
1. ALL DIMENSIONS ARE IN MILLIMETERS UNLESS OTHERWISE NOTED.
 2. ALL FURNITURE LOCATIONS TO BE STAKED OUT AND/OR APPROVED BY THE LANDSCAPE ARCHITECT PRIOR TO INSTALLATION.
 3. BIKE RACK TO BE BLACK POWDER COATED FINISH, SURFACE MOUNTED AS PER MANUFACTURER'S SPECIFICATIONS.

2 BIKE RACK
N.T.S.

- NOTES:
1. ALL FASTENERS TO BE CORROSION RESISTANT WITH APPROPRIATE SPACERS BETWEEN DISSIMAR METALS.
 2. PRODUCT AVAILABLE FROM ONTARIO BOLLARDS.



3 SURFACE MOUNT FOR SITE FURNISHING
N.T.S.



4 BOLLARD
N.T.S.



All Drawings, Specifications and Related Documents are the Copyright Property of the Landscape Architect and must be returned upon request.
Drawings shall not to be used for construction unless authorized by the Landscape Architect.

UniversalCare Canada Inc.
467 Edgeley Blvd. Unit 3, Vaughan, Ontario, L4K 4E9

Client

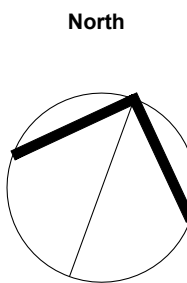
Issued		
Date	Description	By
2025.02.06	Issued for Site Plan Approval	MC
2025.06.12	Issued for Zoning Bylaw Amendment	MC

NOT FOR
CONSTRUCTION

Oak Valley Long Term Care

4 Campbell Drive, Uxbridge, ON
File No.:

Project Information



Scale: As Shown Do not scale drawings

Project No. 25007 Checked By: MC
Date: 2025.06.12 Drawn By: RH

Landscape Details

Drawing Name

LP220

Drawing No.