



VOTE NOW!

Election Signs & Third Party Advertiser Signs

2022-031



Township of Uxbridge

Purpose

This by-law regulates the placement of Election Signs and Registered Third Party Advertiser Signs within the Township to ensure safety, fairness, and compliance during municipal, provincial, and federal elections.

What is Allowed

Election Signs are permitted:

- After a candidate has filed their nomination OR a Third Party has registered.
- No earlier than 48 days before Voting Day.
- With a permit from the Municipal Clerk and payment of the required sign permit fee.
- On private property with consent of the property owner or occupant.
- In accordance with size and placement rules.



What is Prohibited?

It is prohibited to:

- Place signs on public property, parks, utility poles, traffic islands, trees, or Town-owned lands/buildings.
- Place signs within 25m of a Ballot Return Station or 100m of another sign for the same candidate on the same side of the road (with exceptions).
- Use mobile signs, vehicle wraps on Township property, or signs that obstruct traffic, pedestrians, or Township maintenance.
- Place signs with flashing lights, misleading messages, or resembling traffic signs.
- Place more than one sign per candidate/third party per street frontage.



Permit Requirements

- All election signs require a permit.
- Permit must be obtained from the Municipal Clerk.
- Fee is per the Township's **Fees By-law** (By-law 2020-146).
- Permit fees are non-refundable.

Removal of Signs

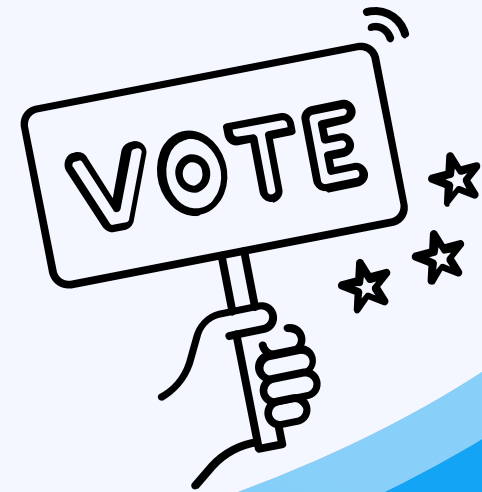
- Signs must be removed within 72 hours after voting day.
- The Township may remove signs in contravention without notice.
- Uncollected signs after 30 days may be destroyed.

Enforcement & Penalties

- Fines up to \$5,000 per offence under the Provincial Offences Act.
- Each day a sign remains in contravention counts as a separate offence.
- Providing false information or obstructing an officer is also an offence.

Key Definitions

- Election Sign: Promotes or opposes a candidate or political issue.
- Registered Third Party: An individual, business, or group (not a candidate or party) incurring expenses to support or oppose a candidate or issue.
- Ballot Return Station: Any voting place or drop-off location.



Size & Location Limits

Maximum height	1.2 metres (4 ft.)
Maximum width	0.8 metres (2.6 ft.)
Minimum area (on highway)	0.32 square metres

Must not obstruct fire exits, hydrants, sidewalks, or vehicle sightlines.

On Private Property

- Consent required from the owner or occupant.
- Max one sign per candidate or third party per frontage.
- Must not interfere with emergency access or public safety.

Need More Information?

Application forms and the full by-law are available at: www.uxbridge.ca/elections

Contact By-law Services:
905-852-9181
bylaw@uxbridge.ca

Respect the rules. Keep Uxbridge safe, fair, and informed during the election season.